

Index

1. Contents
2. Basic Procedures
3. Cockpit checks
4. Mirrors
5. Clutch
6. Moving off
7. Pull up on the left (stopping)
8. Angled start
9. Emerging left
10. Emerging right
11. Turning left
12. Turning right
13. Other junctions
14. Crossroads
15. Other crossroads
16. Traffic lights (offside to offside)
17. Traffic lights (nearside to nearside)
18. Roundabouts left
19. Roundabouts ahead
20. Roundabouts right
21. Roundabouts other
22. Spiral Roundabouts
23. Spiral Roundabouts with traffic lights
24. Mini roundabouts
25. Mini roundabouts other
26. One way streets
27. Meeting traffic
28. Positioning
29. Overtaking
30. Pedestrian crossings
31. Zebra crossings
32. Light controlled crossings
33. Dual carriageways
34. Dual carriageways
35. Dual carriageways
36. Motorways
37. Turn in the road
38. Reversing left
39. Pull up on right & reverse
40. Forward bay park
41. Reverse bay park
42. Parallel park
43. Emergency Stop

Road signs and markings
Tell me questions
Show me questions
Test marking sheet

Do Not Copy

Basic Procedures

P O M

Preparation

Get the car ready

- gas
- in gear
- biting point
- handbrake ready

Do Not Copy

Observation

Look all around

- interior mirror
- door mirrors
- ahead
- blind spots

Rear window if reversing

Manoeuvre

- Release handbrake
- Control speed of car with pedals
- Steer as required
- Continue observation ahead and behind

M S P S L

Mirrors



Signal



Position



Speed
(& gears)



Look

L A D A

LOOK ASSESS
DECIDE ACT

S C A L P

Always choose somewhere that is a
Safe, **Convenient** and
Lawful Place

Cockpit Checks

Doors



Seat Base

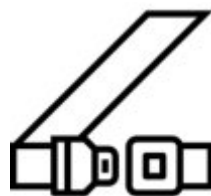


Do Not Copy

Seat Back/Steering Wheel



Seat Belts



Mirrors



Mirrors



Do Not Copy

Mirror Blind
Spot Area

Mirror Blind
Spot Area



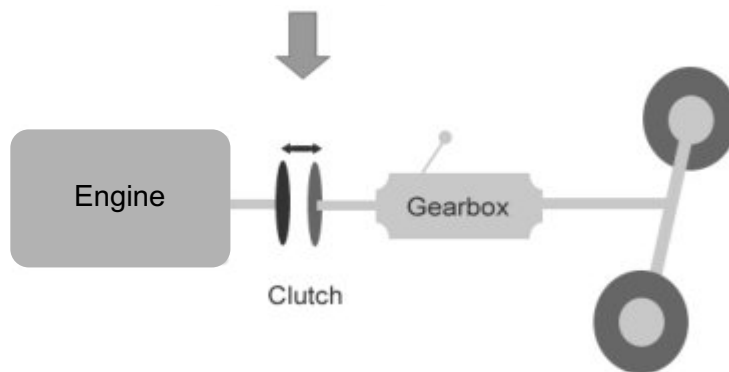
Door Mirror

Door Mirror

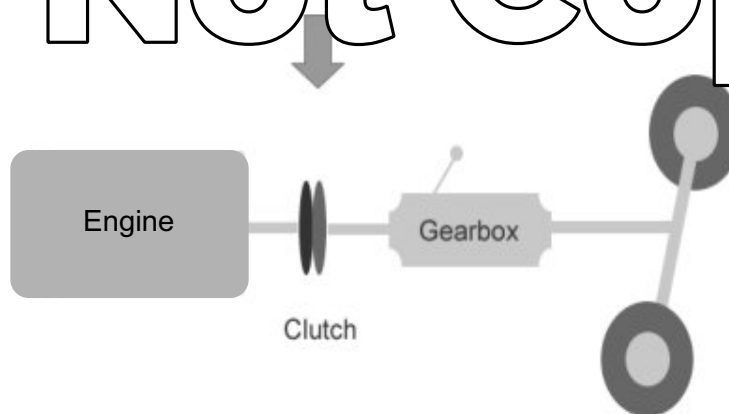
Interior Mirror

Clutch

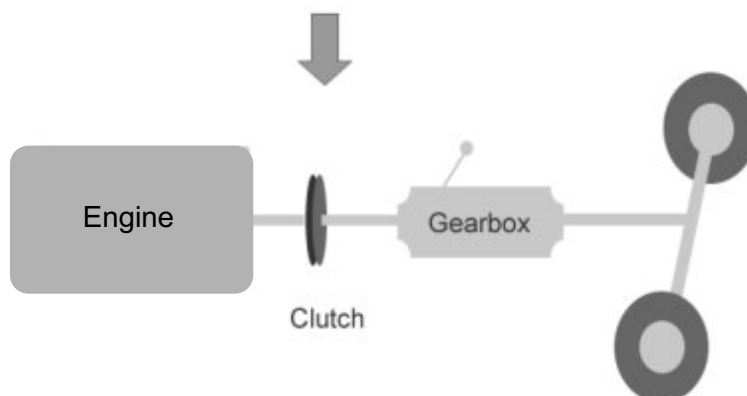
Clutch pedal down = plates pushed apart



Do Not Copy



Clutch fully up = plates gripping on



Moving Off

Preparation

Clutch down



First gear



Gas



Biting point



Observation

Ahead



Blind Spot



Signal if necessary



Manoeuvre

Release handbrake



Ease clutch up slowly



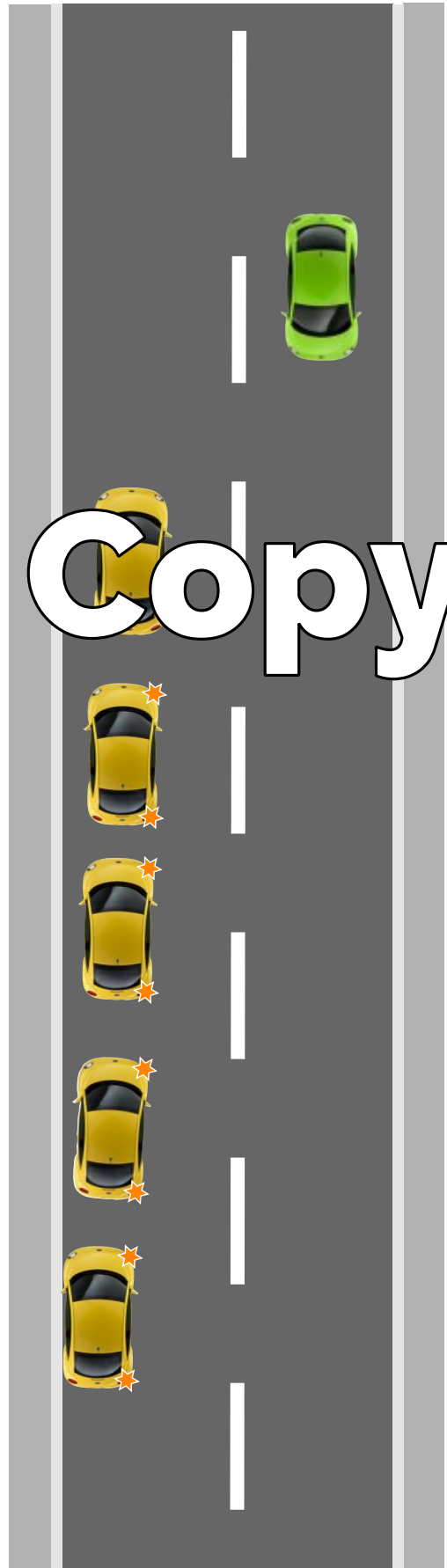
Increase gas



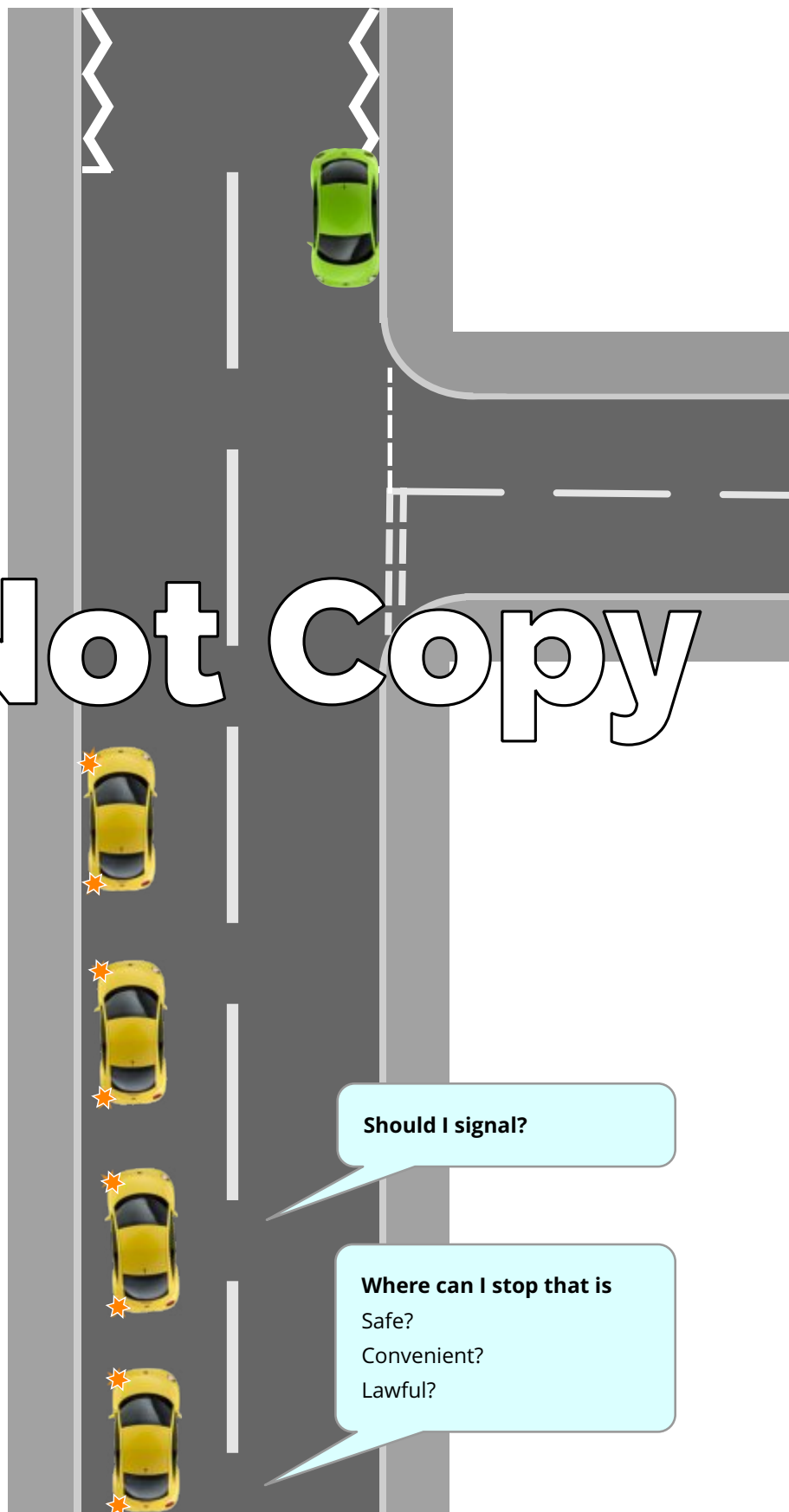
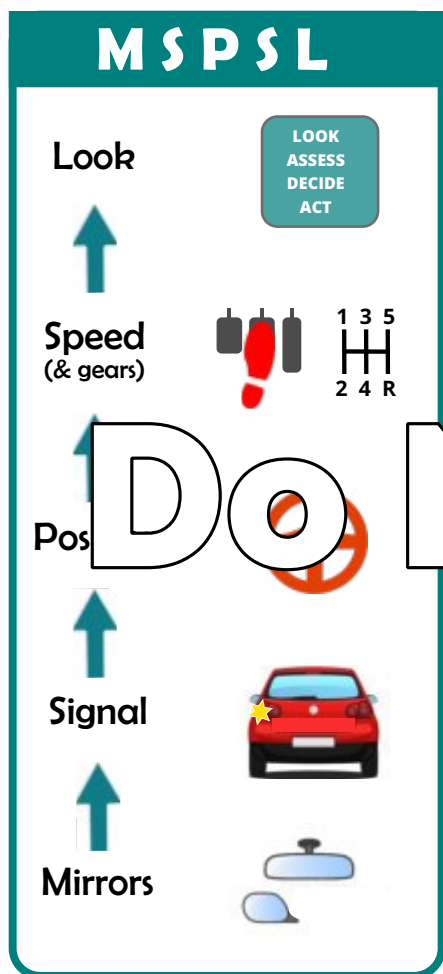
Steer away from the kerb & straighten up



Check mirrors
Cancel signal



Pull up Left



Angled Start

Do Not Copy

Where should I look?

Should I signal?

How will I keep the car slow?



Preparation

Clutch down



First gear



Gas

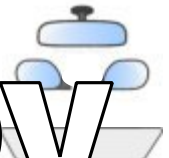


Biting point



Observation

Mirrors



Blind Spot



Signal if necessary



Manoeuvre

Release handbrake



Ease clutch up slowly



Increase gas



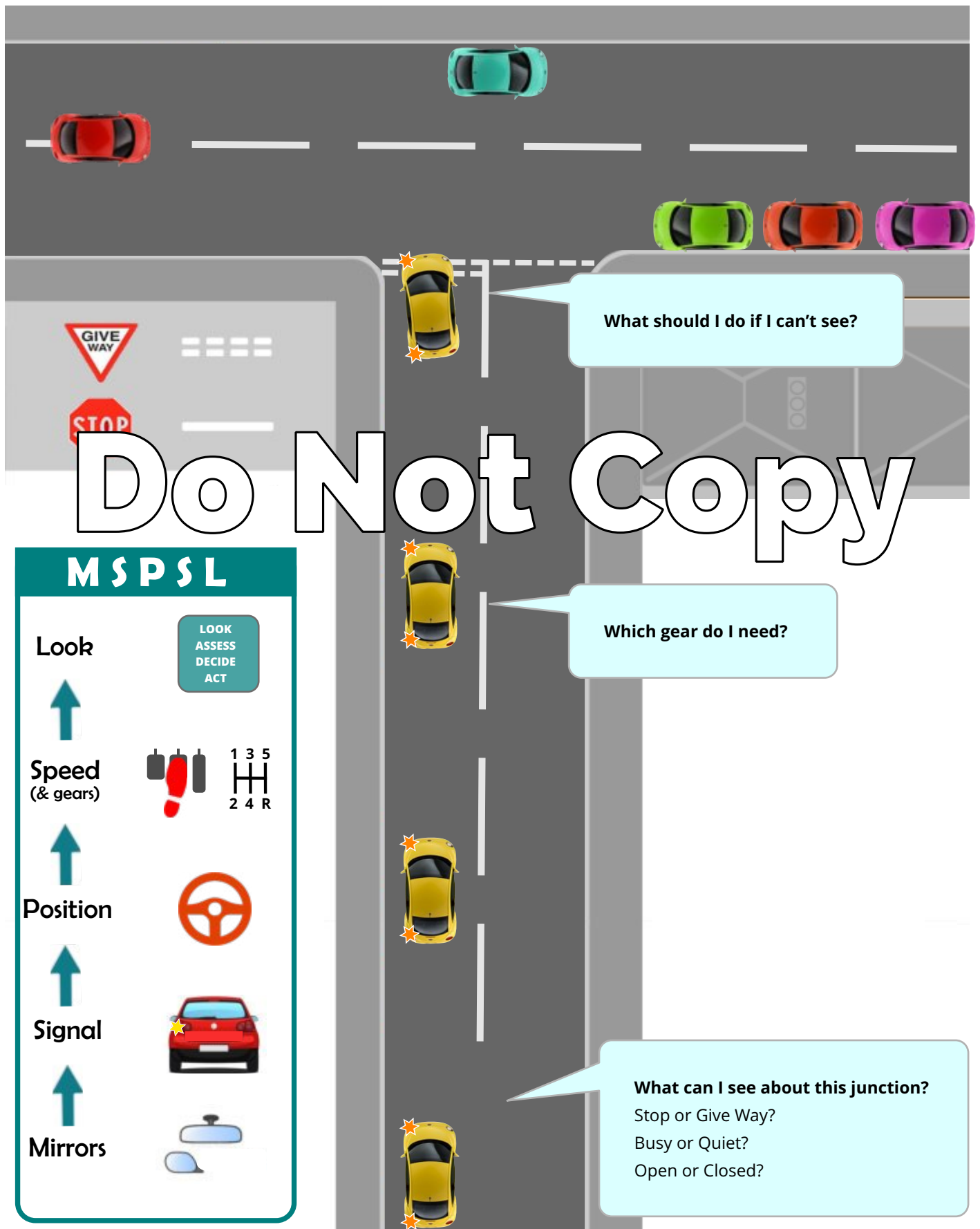
Steer away from the kerb & straighten up then steer in to normal driving position



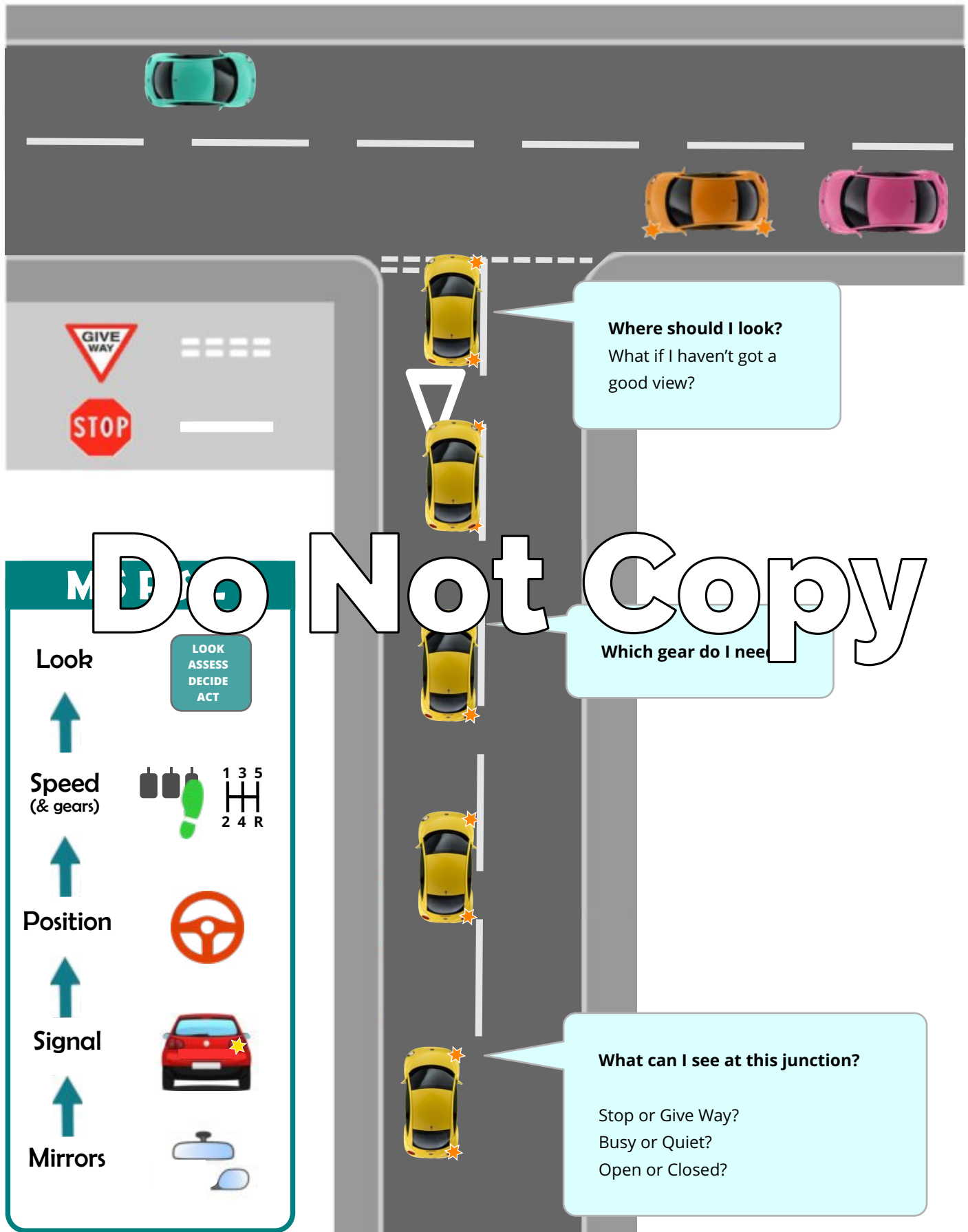
Check mirrors



Emerging Left



Emerging Right



Turning Left



Do Not Copy

What's in the new road?

Which gear will I need?

How sharp is the corner?

How busy is this junction?

MSPSL

Look

LOOK
ASSESS
DECIDE
ACT



Speed
(& gears)



Position



Signal



Mirrors



Turning Right



Do Not Copy

MSPSL

Look



LOOK
ASSESS
DECIDE
ACT

Speed
(& gears)



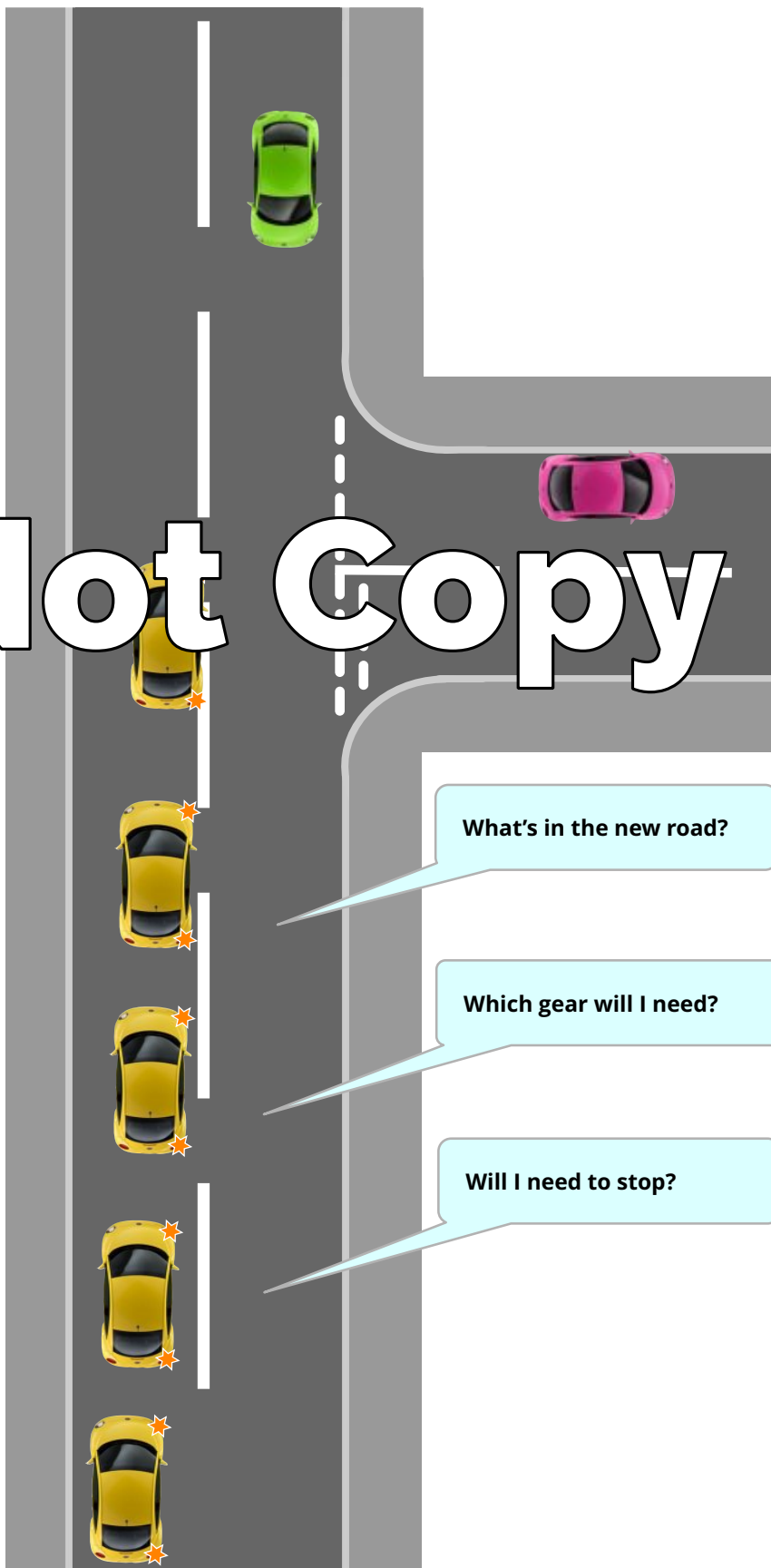
Position



Signal



Mirrors

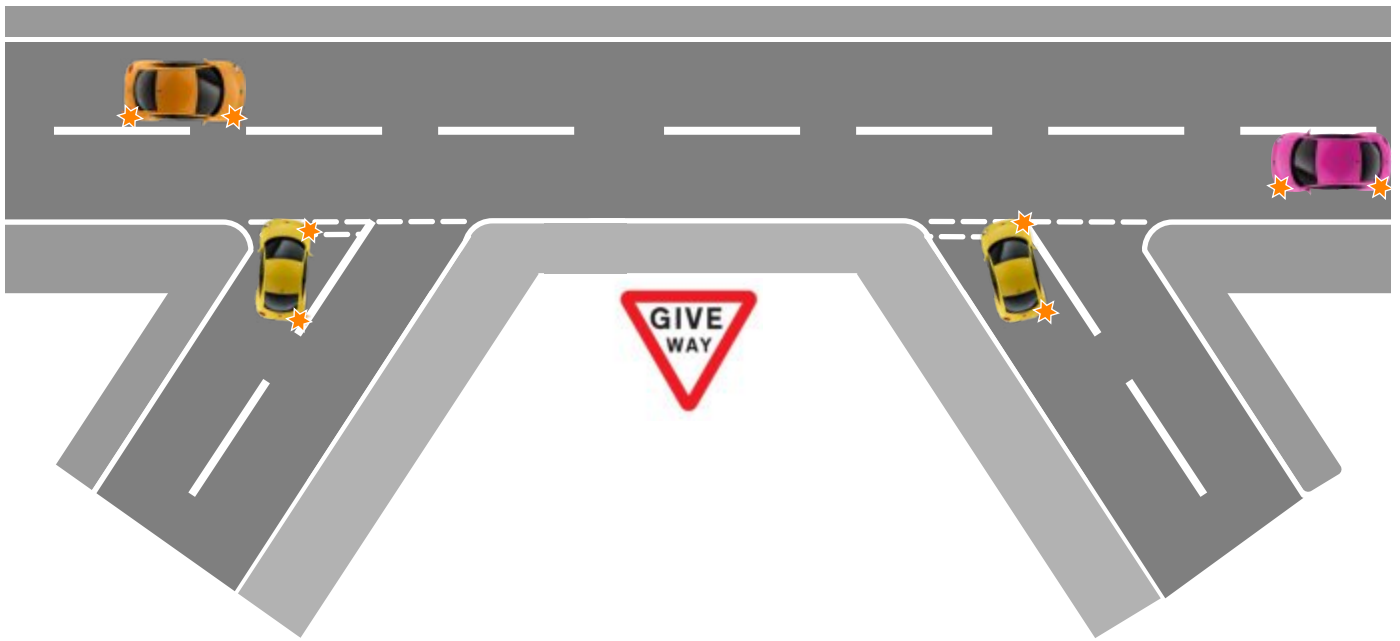


What's in the new road?

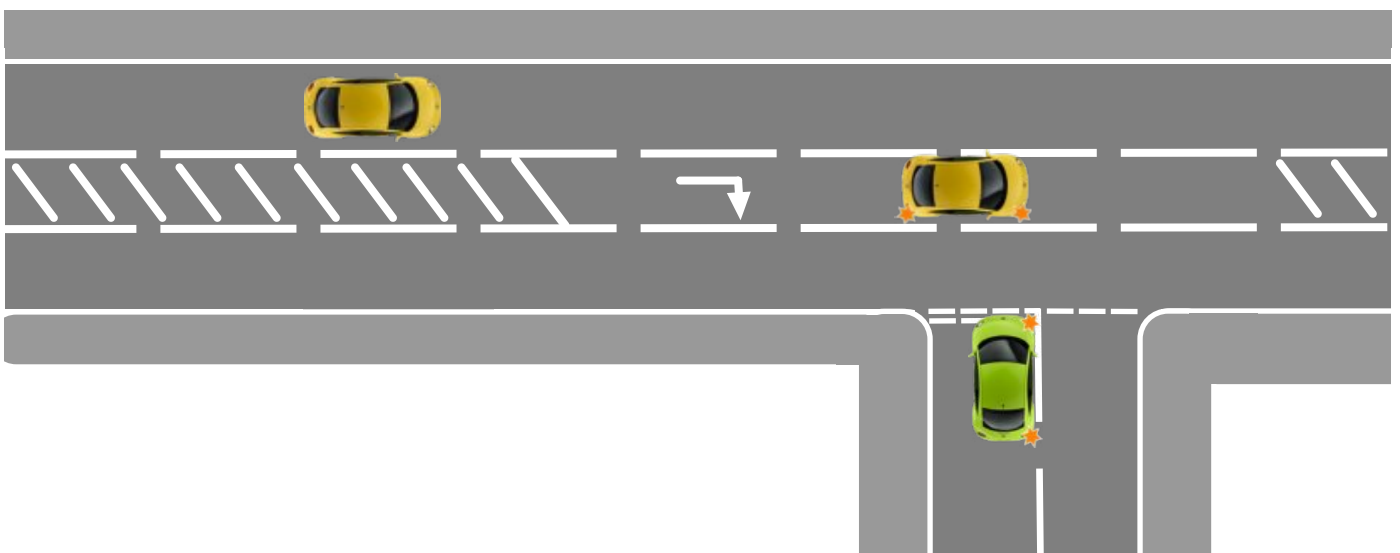
Which gear will I need?

Will I need to stop?

Other Junctions



Do Not Copy



Crossroads

Do Not Copy

MSPSL

Look



Speed (& gears)


Position


Signal


Mirrors

LOOK
ASSESS
DECIDE
ACT

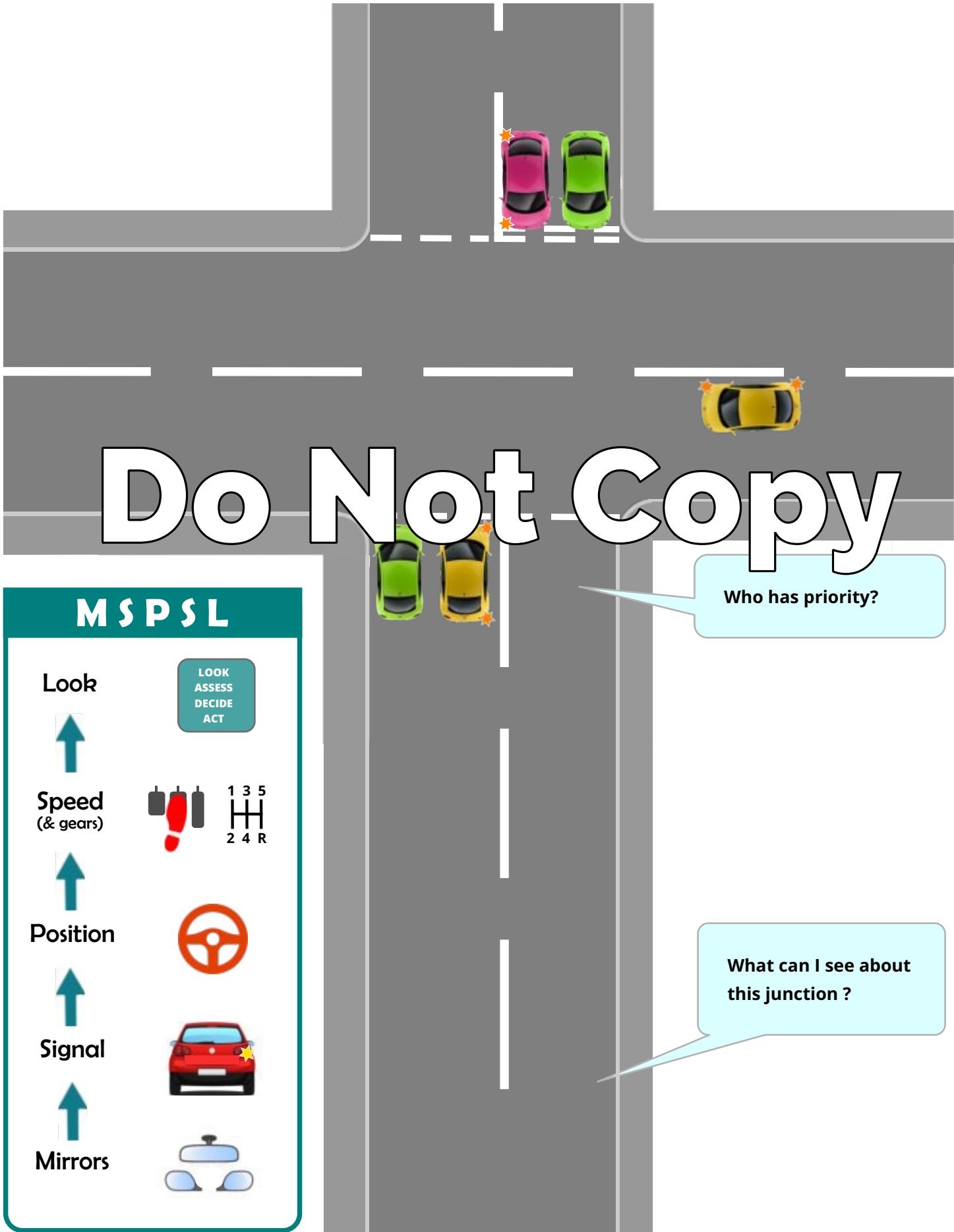




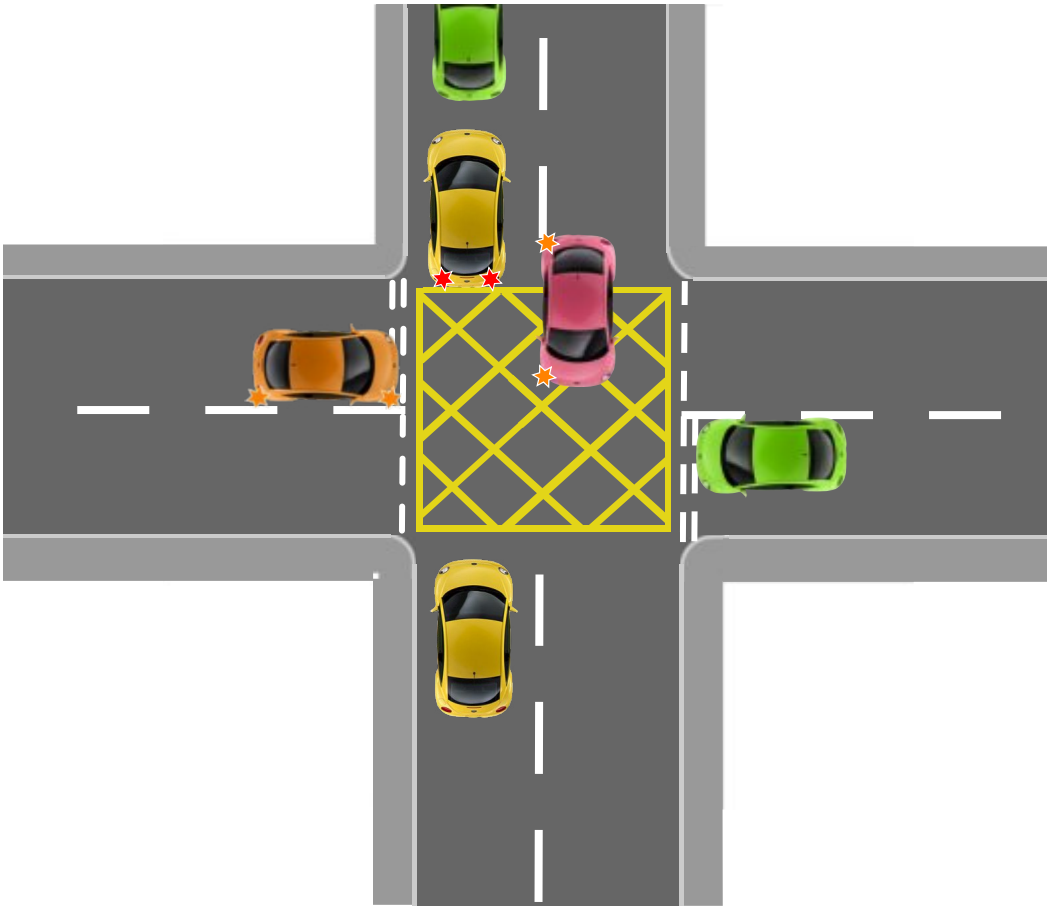


Who has priority?

What can I see about this junction ?



Other Cross Roads



Traffic Lights

Offside to Offside

Why might this be safer?



Do Not Copy

M S P S L

Look



LOOK
ASSESS
DECIDE
ACT

Speed
(& gears)



Position



Signal



Mirrors



Is it safe to proceed into the junction?

What is everyone else doing?
What position should I take up?

At what stage am I committed to go even if the lights change to amber?

What can I see about this junction even from this far back?

Traffic Lights



Nearside to Nearside

Why might this be necessary?



Do Not Copy

MSPSL

Look



Speed
(& gears)



1 3 5
2 4 R

Position



Signal



Mirrors



LOOK
ASSESS
DECIDE
ACT

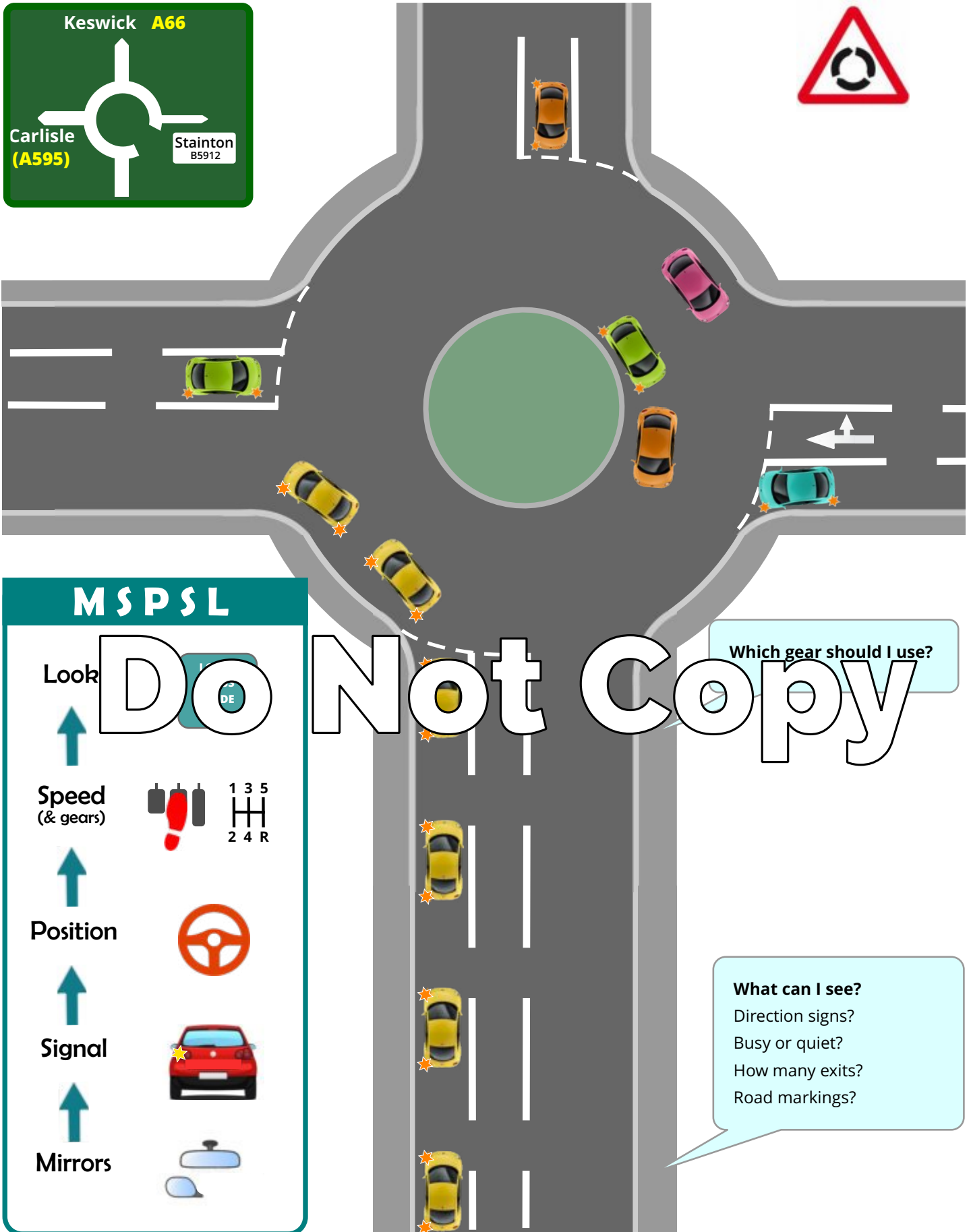
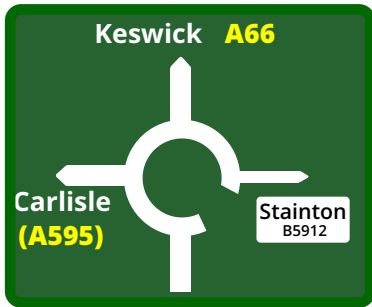
Is it safe to proceed into the junction?

What is everyone else doing?
What position should I take up?

At what stage am I committed to go
even if the lights change to amber?

What can I see about this junction
even from this far back?

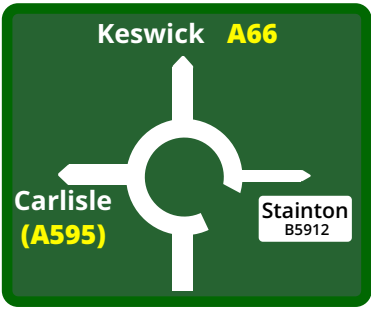
Roundabouts - Left



Which gear should I use?

What can I see?
 Direction signs?
 Busy or quiet?
 How many exits?
 Road markings?

Roundabouts - Ahead



Look

Speed (& gears)

Position

Signal

Mirrors

DO NOT COPY

ACT

1 3 5
2 4 R

1 3 5
2 4 R

1 3 5
2 4 R

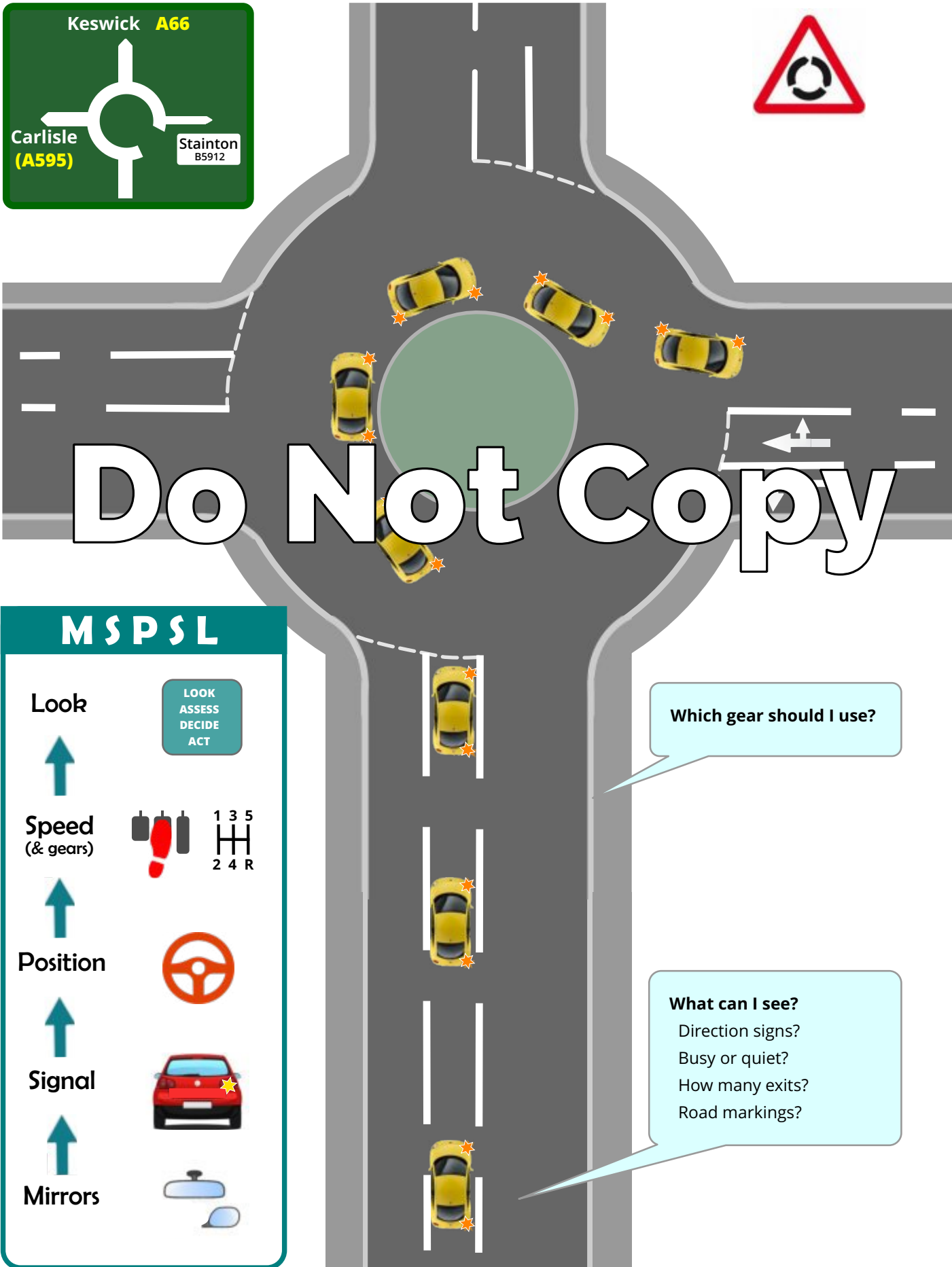
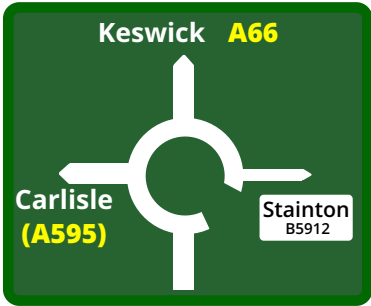
1 3 5
2 4 R

Which car should I use?

Which lane should I use?

What can I see?
Direction signs?
Busy or quiet?
How many exits?
Road markings?

Roundabouts - Right



MSPSL

Look



LOOK
ASSESS
DECIDE
ACT

Speed
(& gears)



Position



Signal



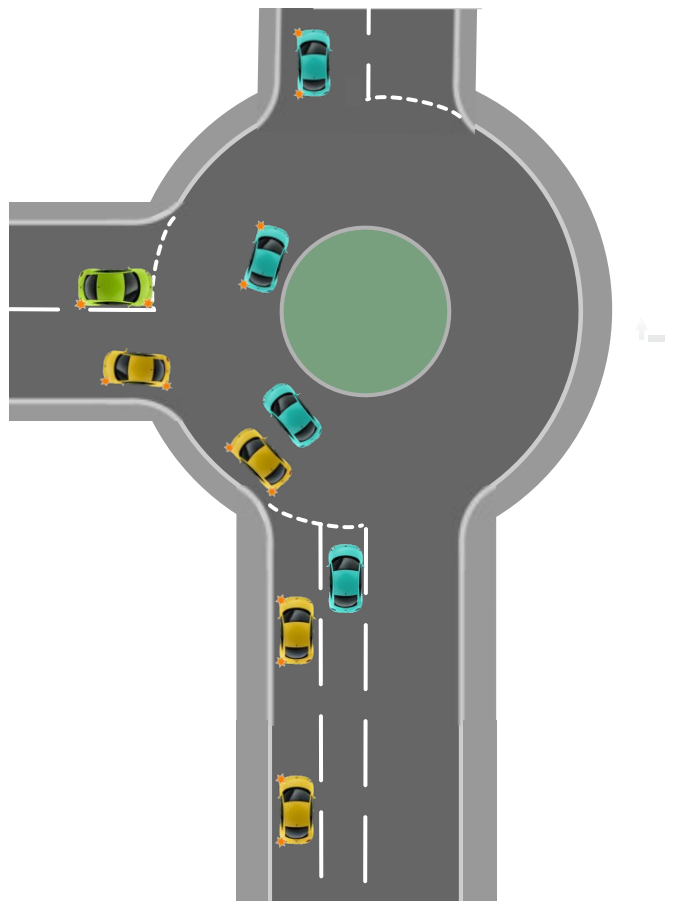
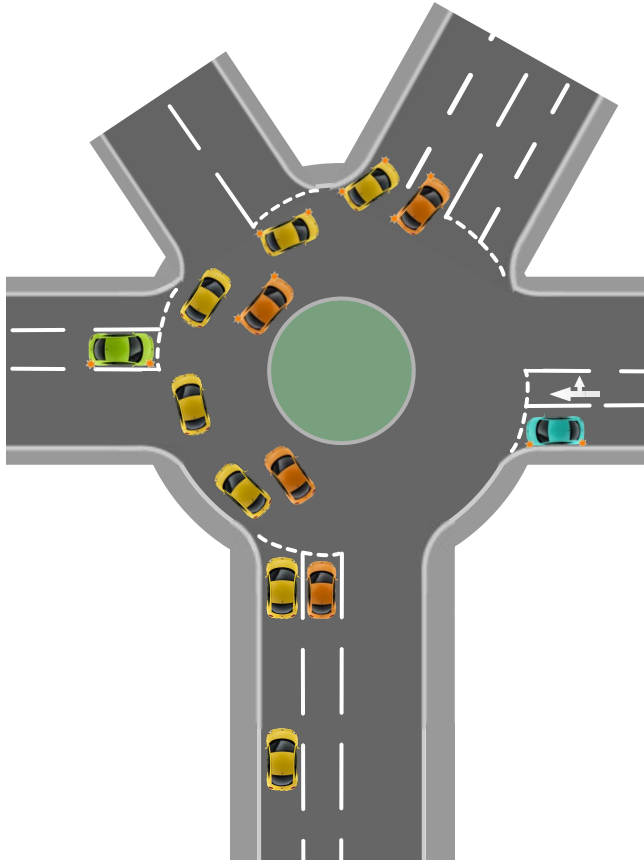
Mirrors



Roundabouts - Others



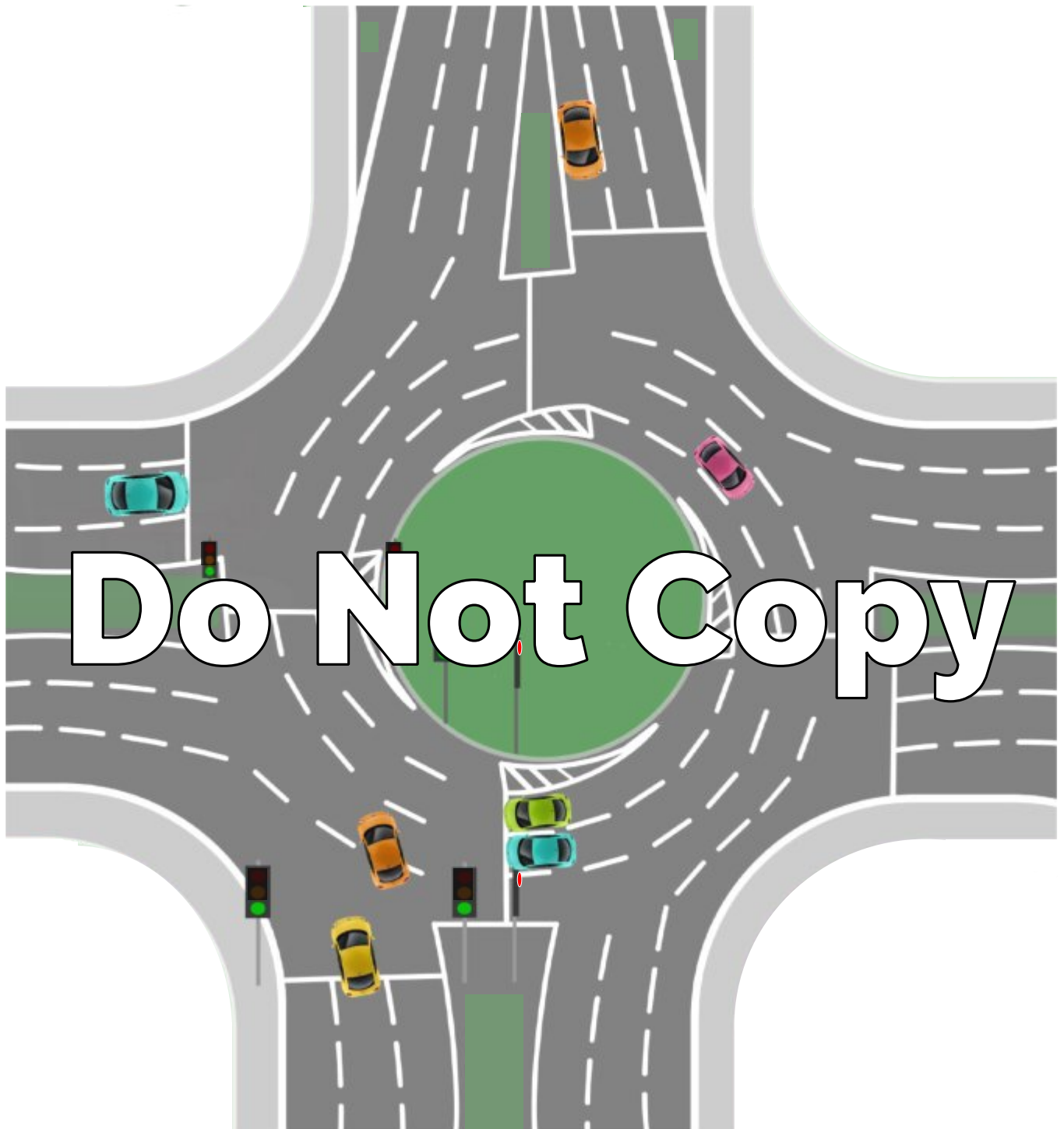
Do Not Copy



Spiral Roundabout



Roundabout Traffic Lights



Roundabouts - Mini



MSPSL

Look



Speed
(& gears)



LOOK
ASSESS
DECIDE
ACT

Position



Signal



Mirrors

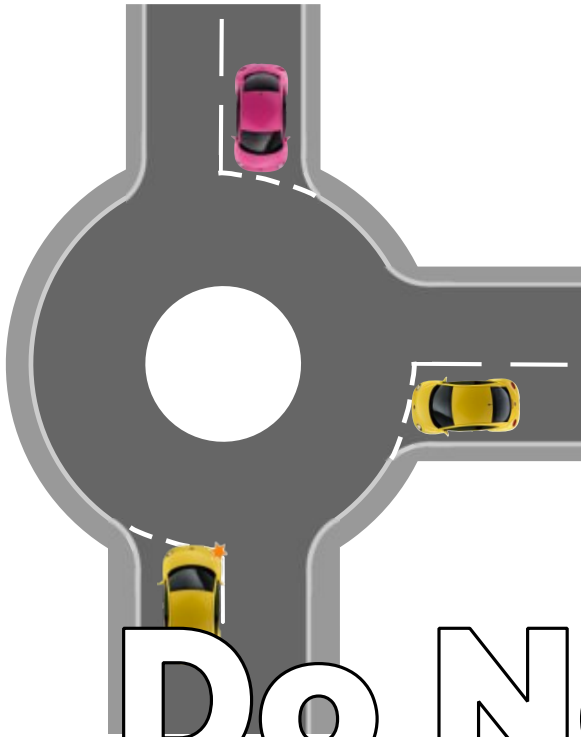


Who has priority?

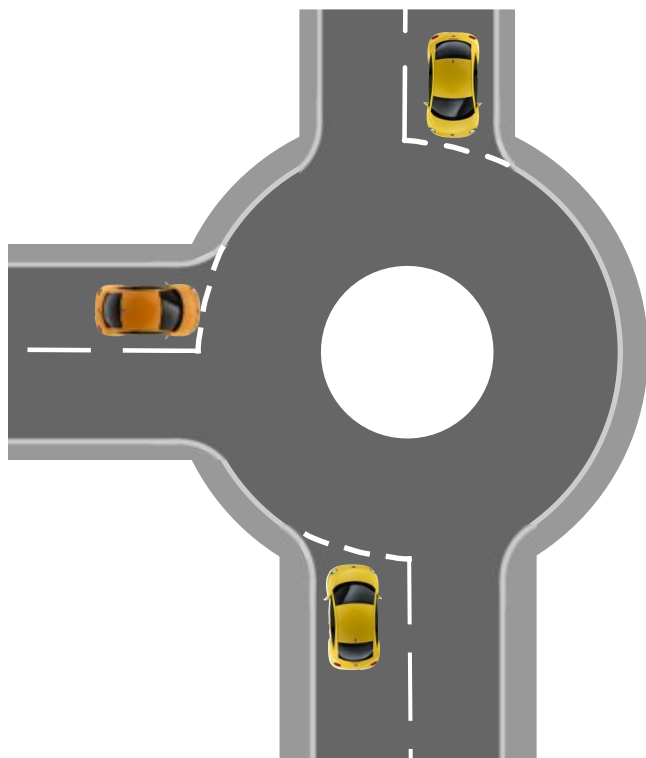
What can I see?

Direction signs?
Busy or quiet?
How many exits?
Road markings?

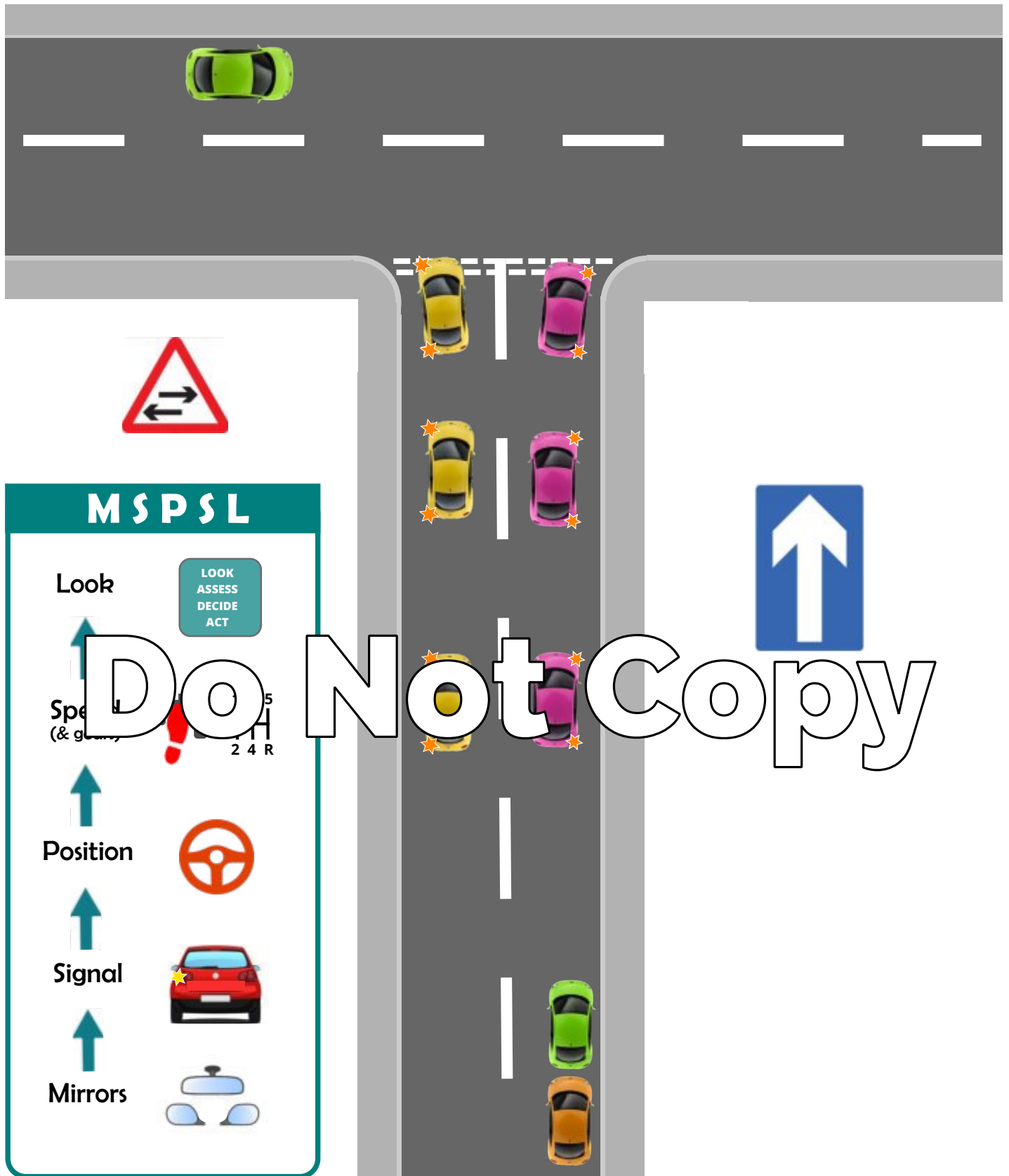
Mini Roundabouts - Others



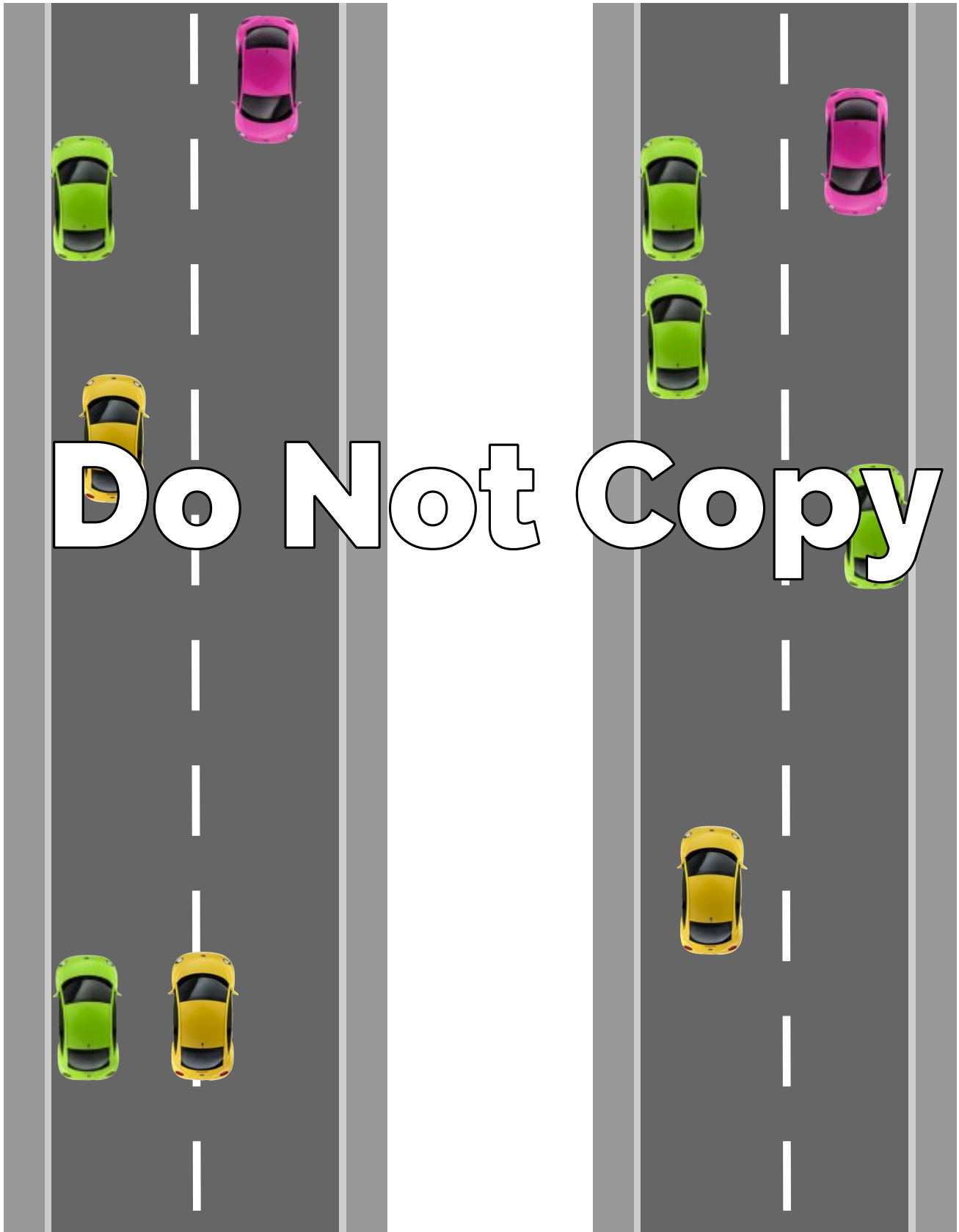
Do Not Copy



One Way Streets



Meeting Traffic



Positioning



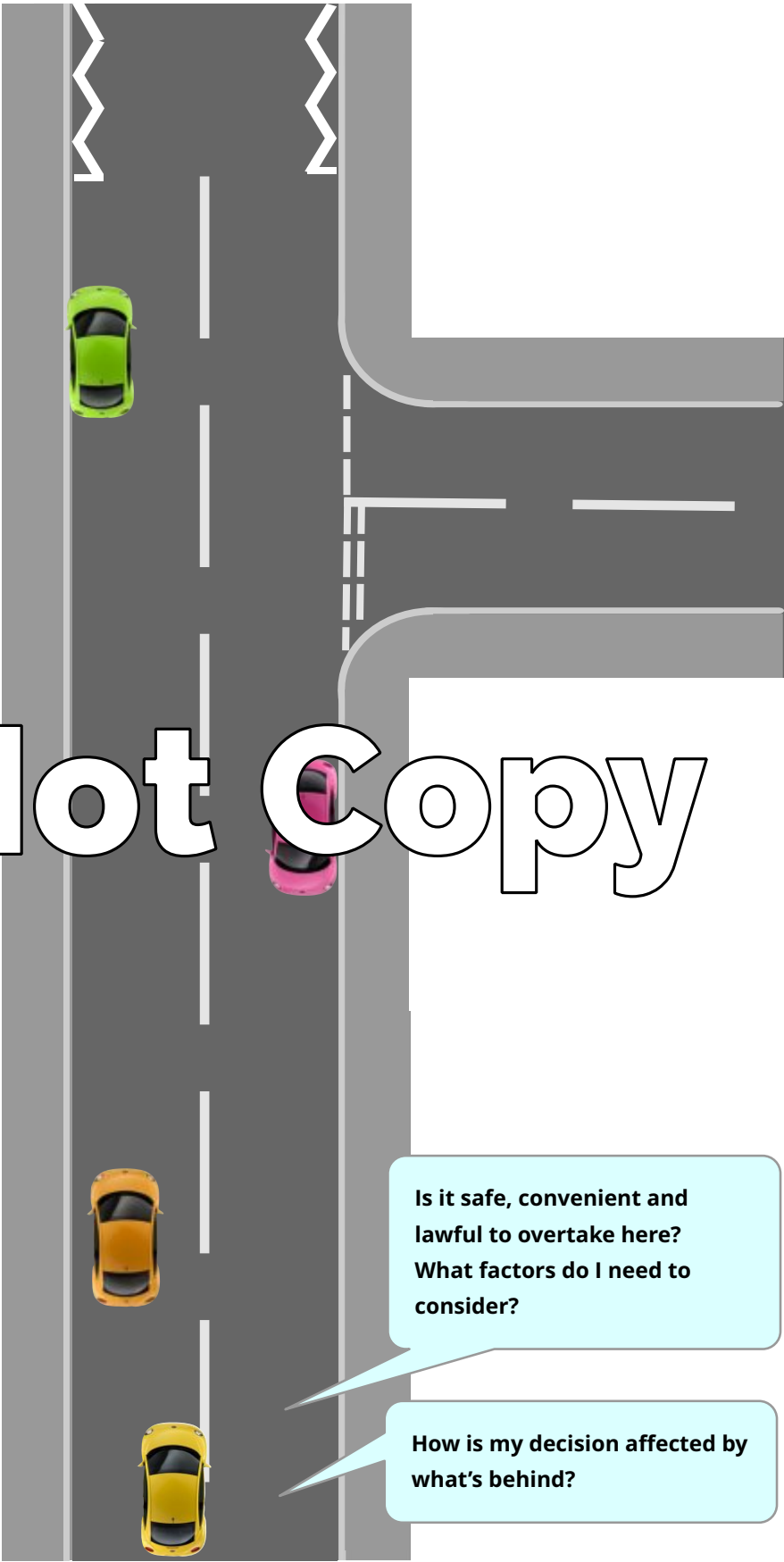
How do road markings affect my position?

How far should I be from parked cars?

What is my normal driving position?

Do Not Copy

Overtaking



MSPSL

Loc

Speed (& gears)

Position

Signal

Mirrors

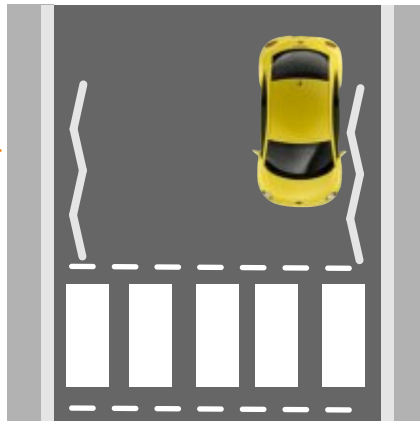
Is it safe, convenient and lawful to overtake here?
What factors do I need to consider?

How is my decision affected by what's behind?

Pedestrian Crossings

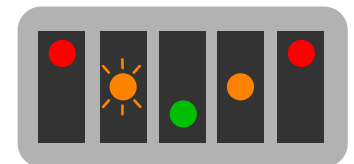
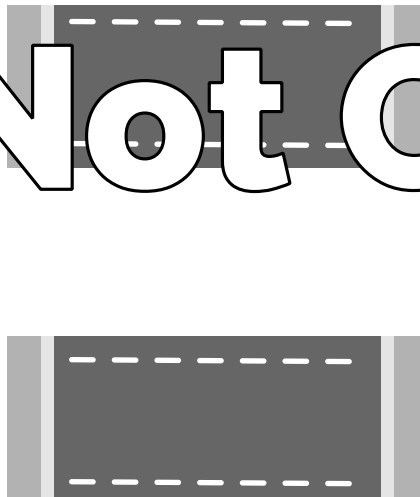


Zebra

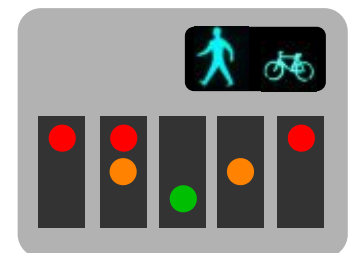


Do Not Copy

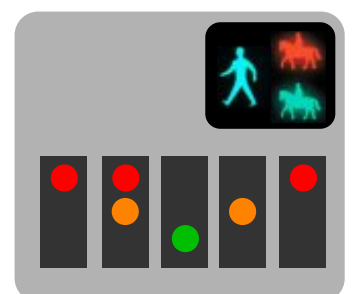
Pelican



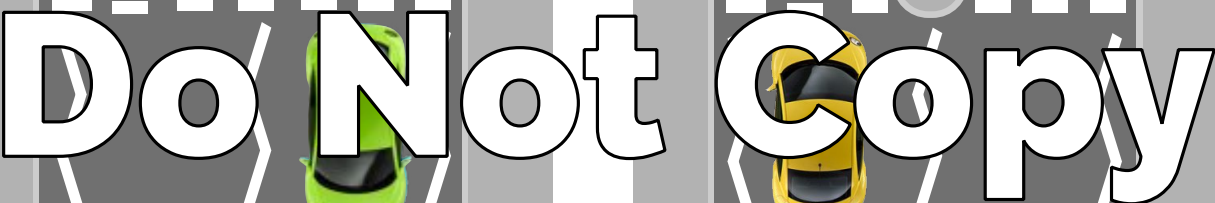
Toucan



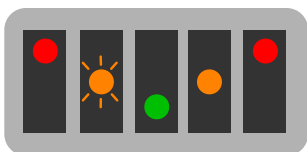
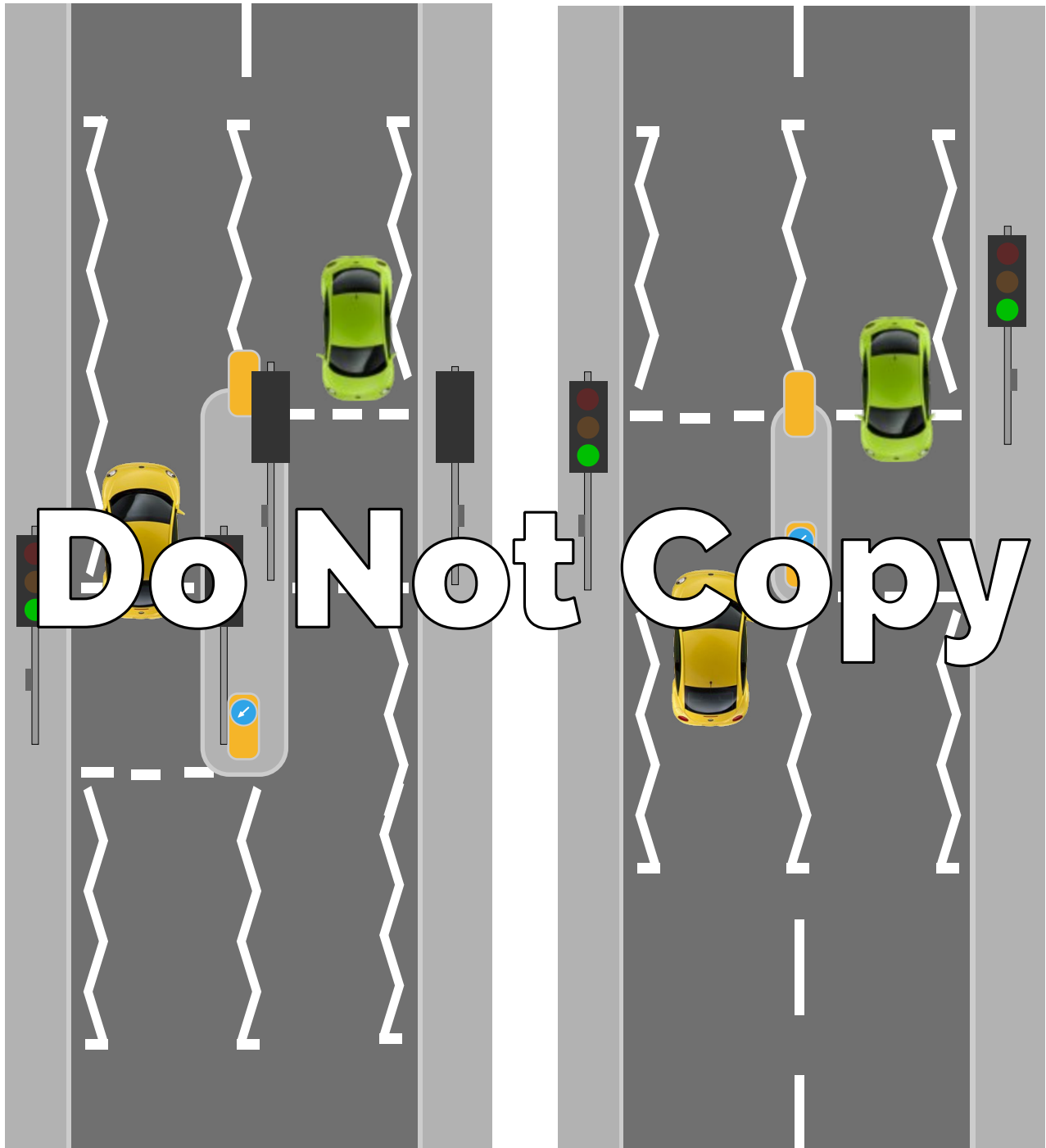
Pegasus/Equine



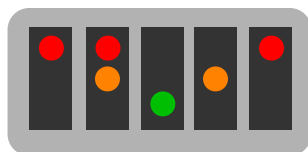
Zebra Crossings



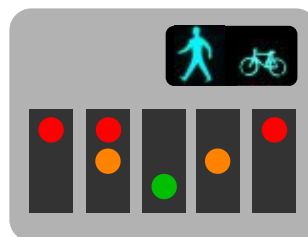
Light Controlled Crossings



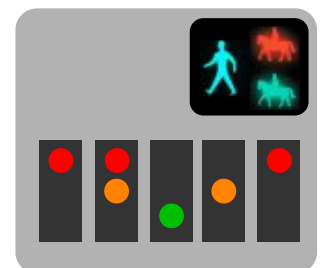
Pelican



Puffin

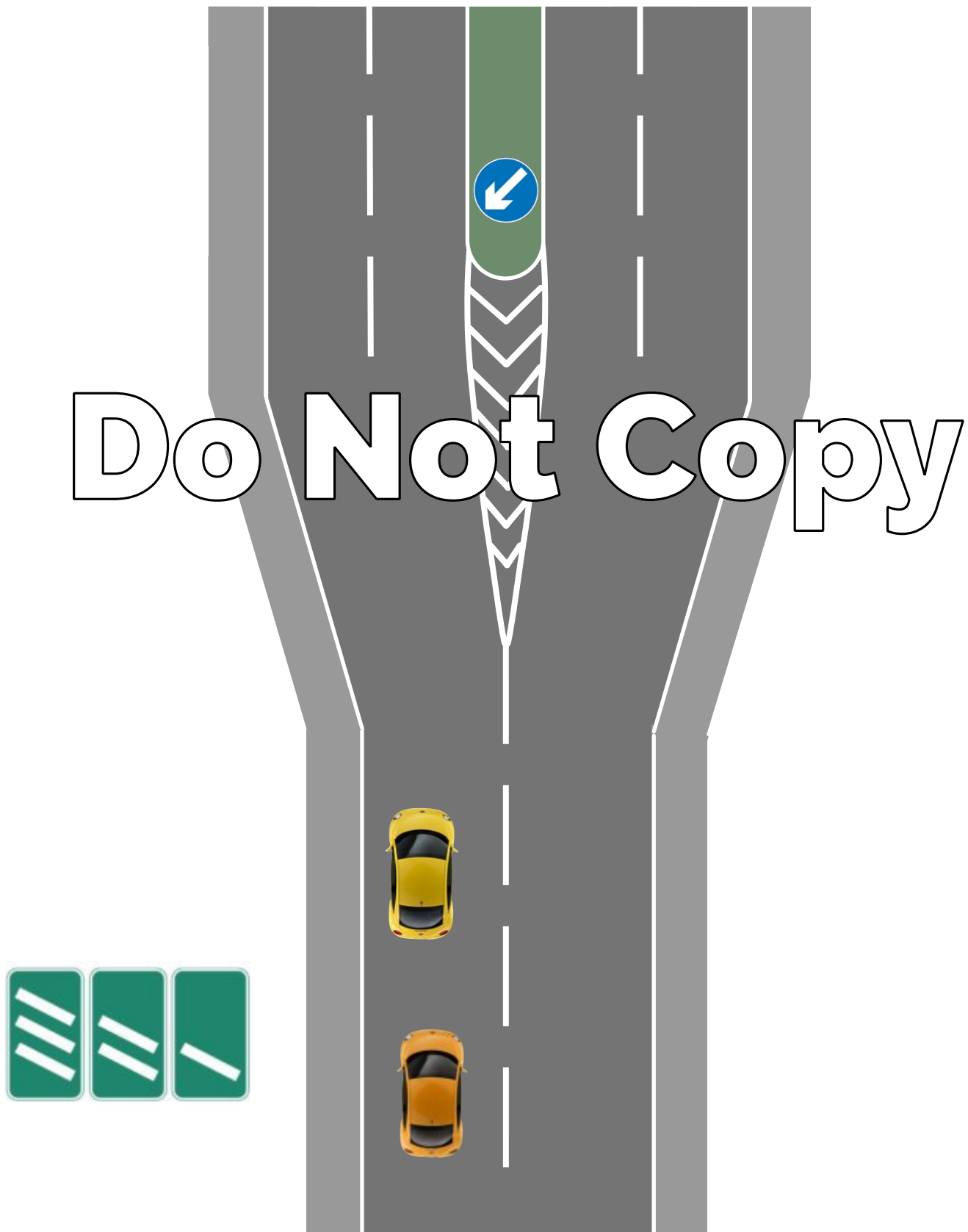


Toucan

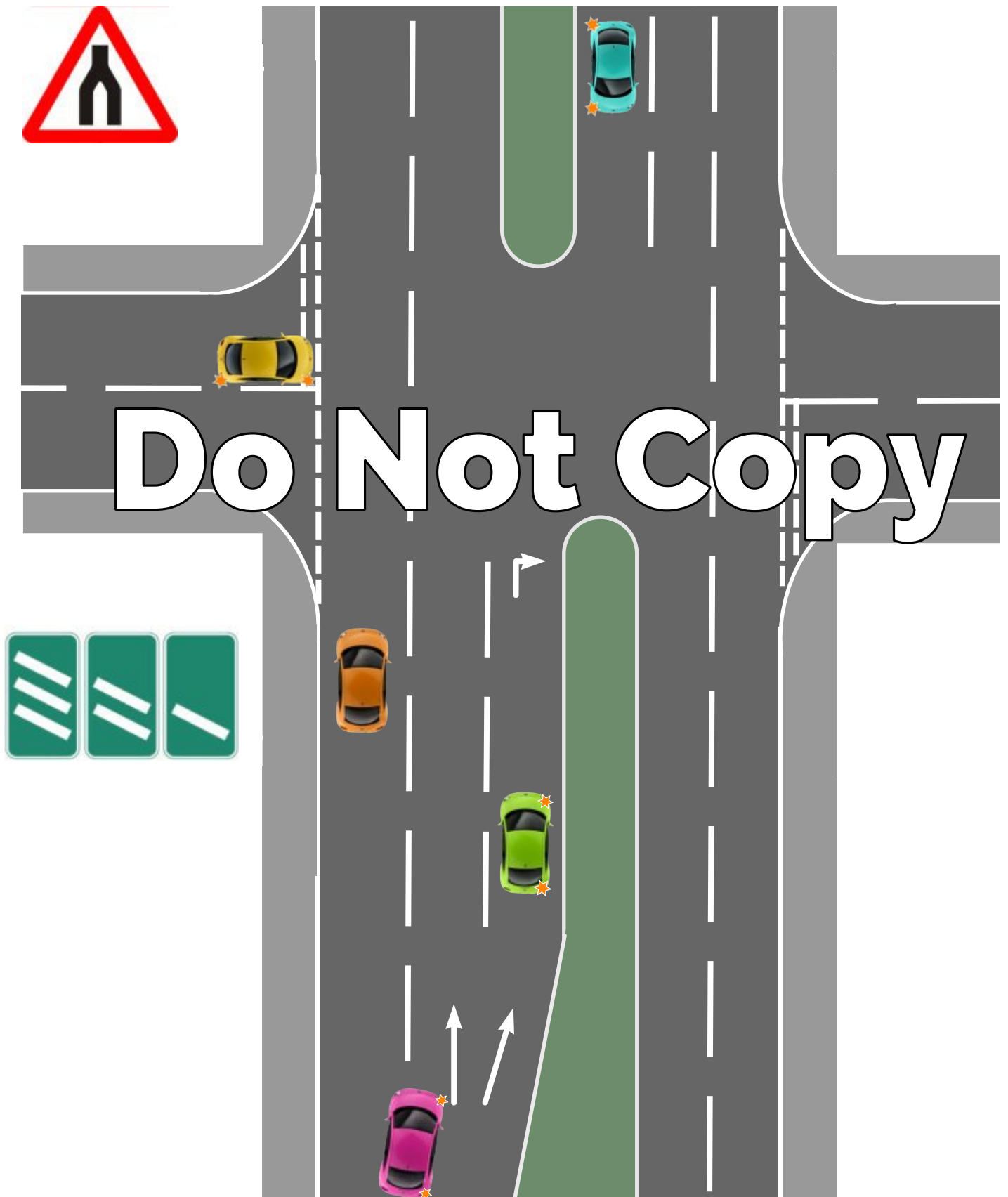


Pegasus/Equine

Dual Carriageways



Dual Carriageways

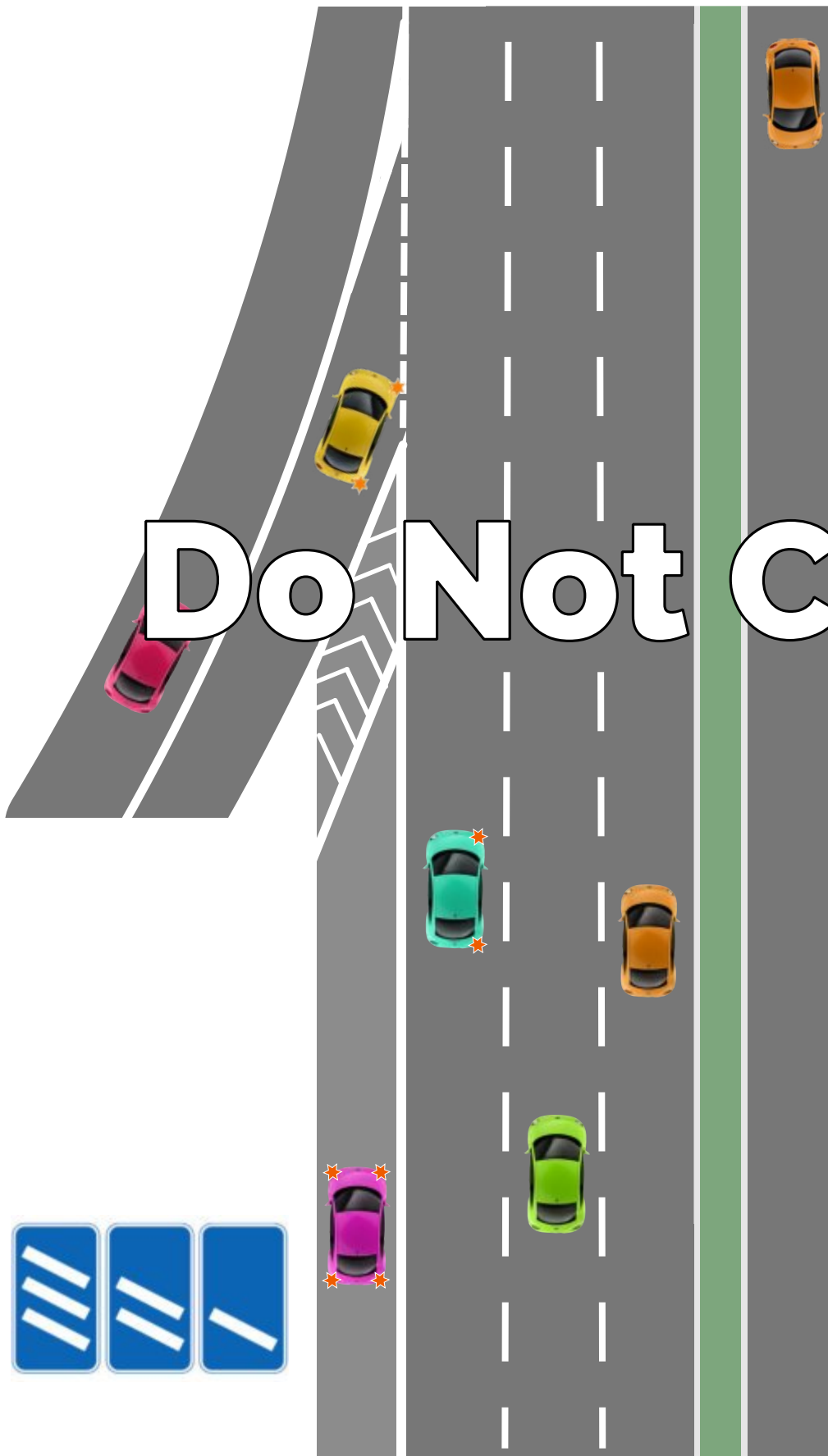


Dual Carriageways

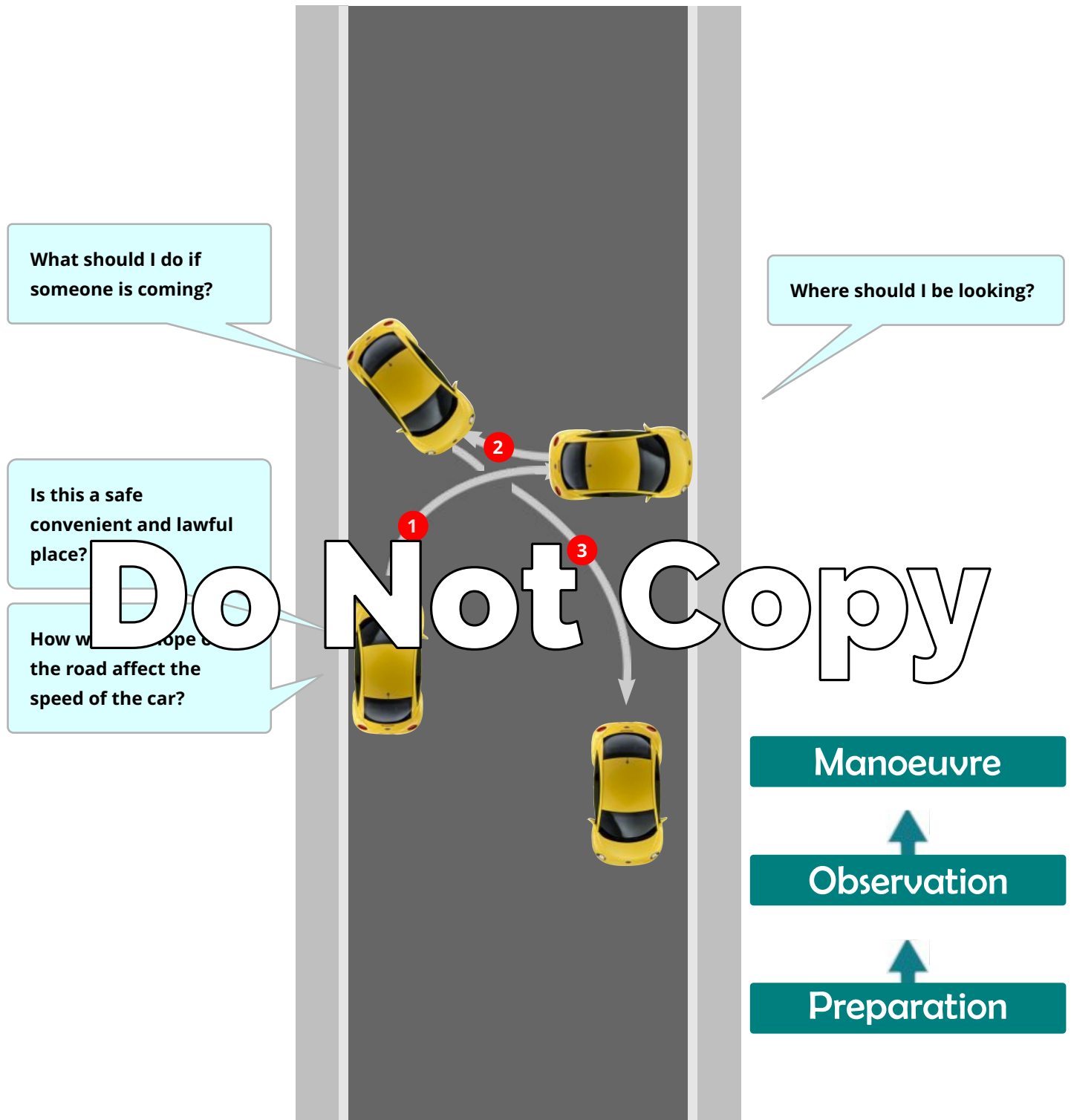
Do Not Copy



Motorways



Turn in the Road



Reverse Left

Does the road slope? How will I control speed?

Where do I need to look?

Preparation

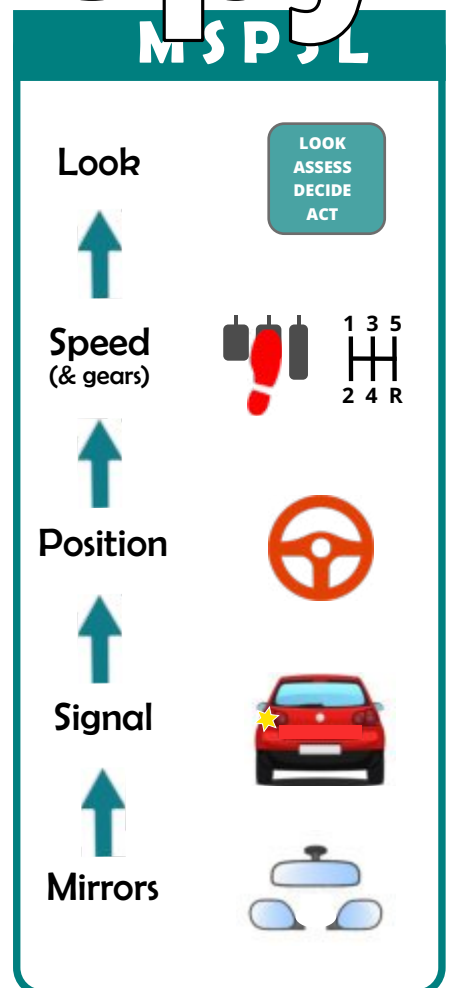
Observation

Manoeuvre

Do Not Copy

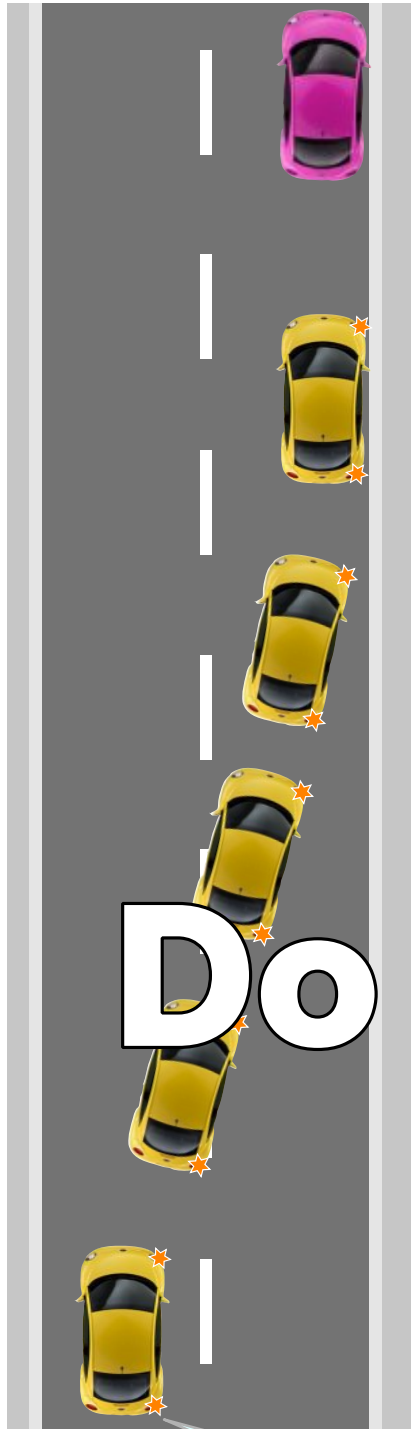
How sharp is the corner?

Is this location
Safe?
Convenient?
Lawful?



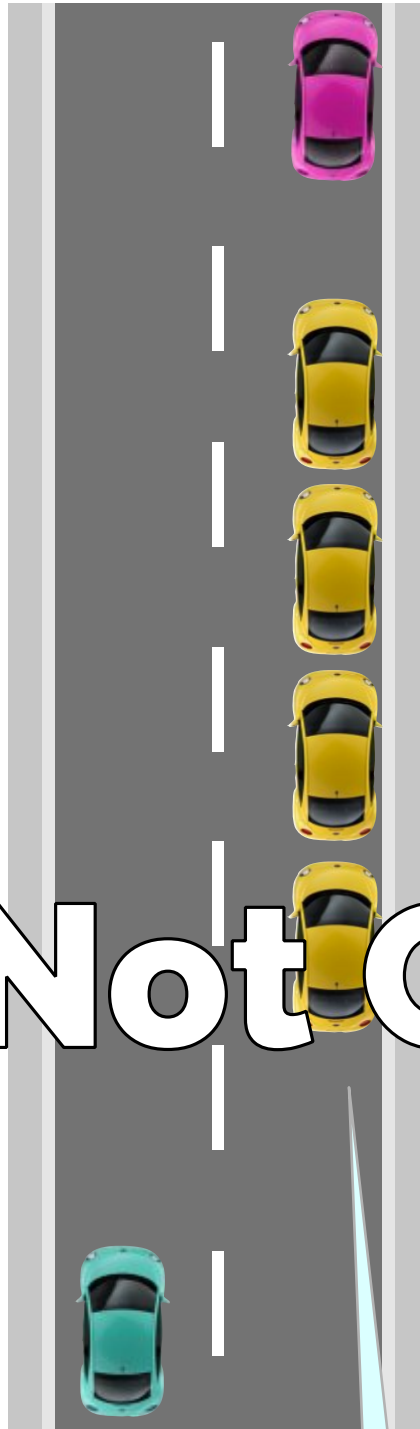
Pull up on Right & Reverse

Pull up on right



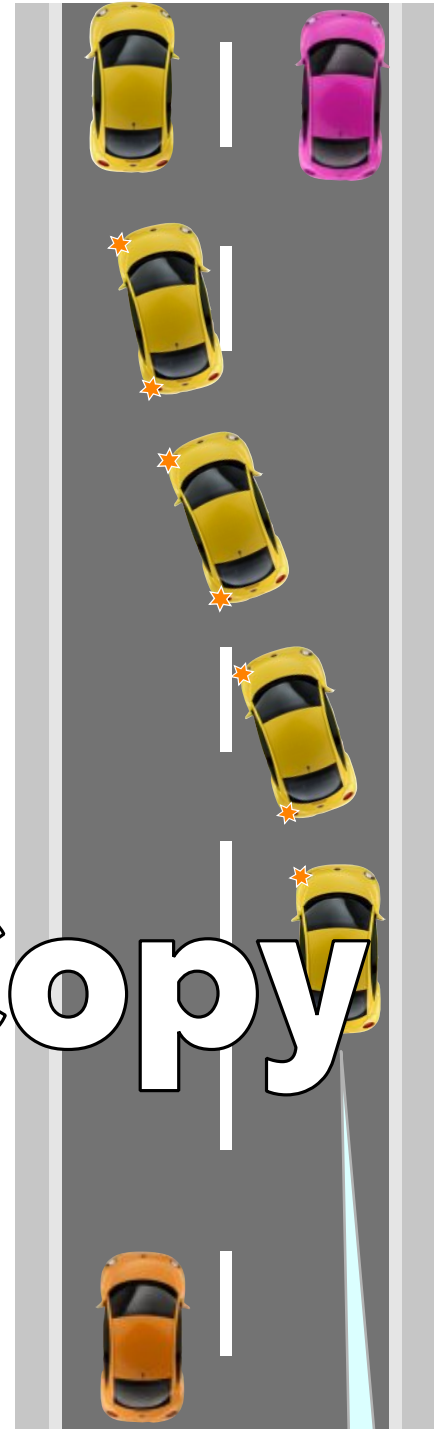
Where is a suitable place?
Is there oncoming traffic?
M-S-P-S-L

Reverse 2 car lengths



Where do I need to look?
How do I control my speed?
P-O-M

Pull away safely

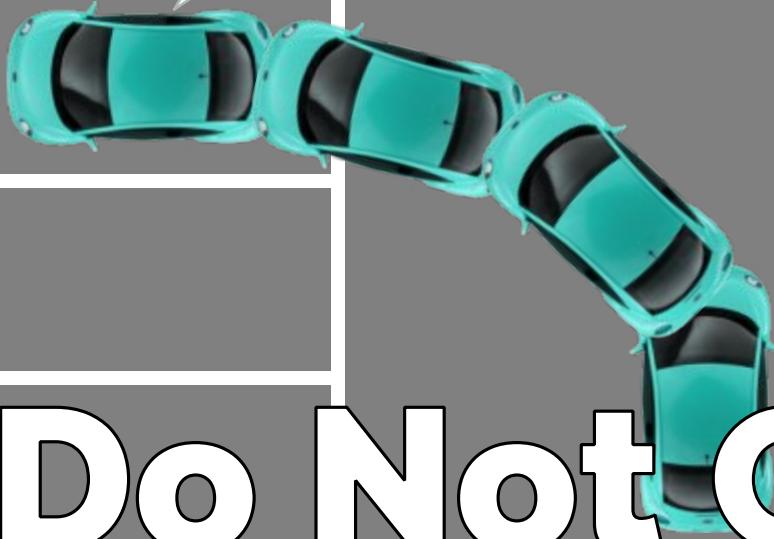


Where should I look?
Is it safe?
P-O-M

Do Not Copy

Forward Bay Park

Will I reverse to the left or right?
Where should I look before reversing?



Do Not Copy



Which space will I park in?
Should I signal?
When do I start turning?
How do I keep the car slow?

Mirrors

Signal

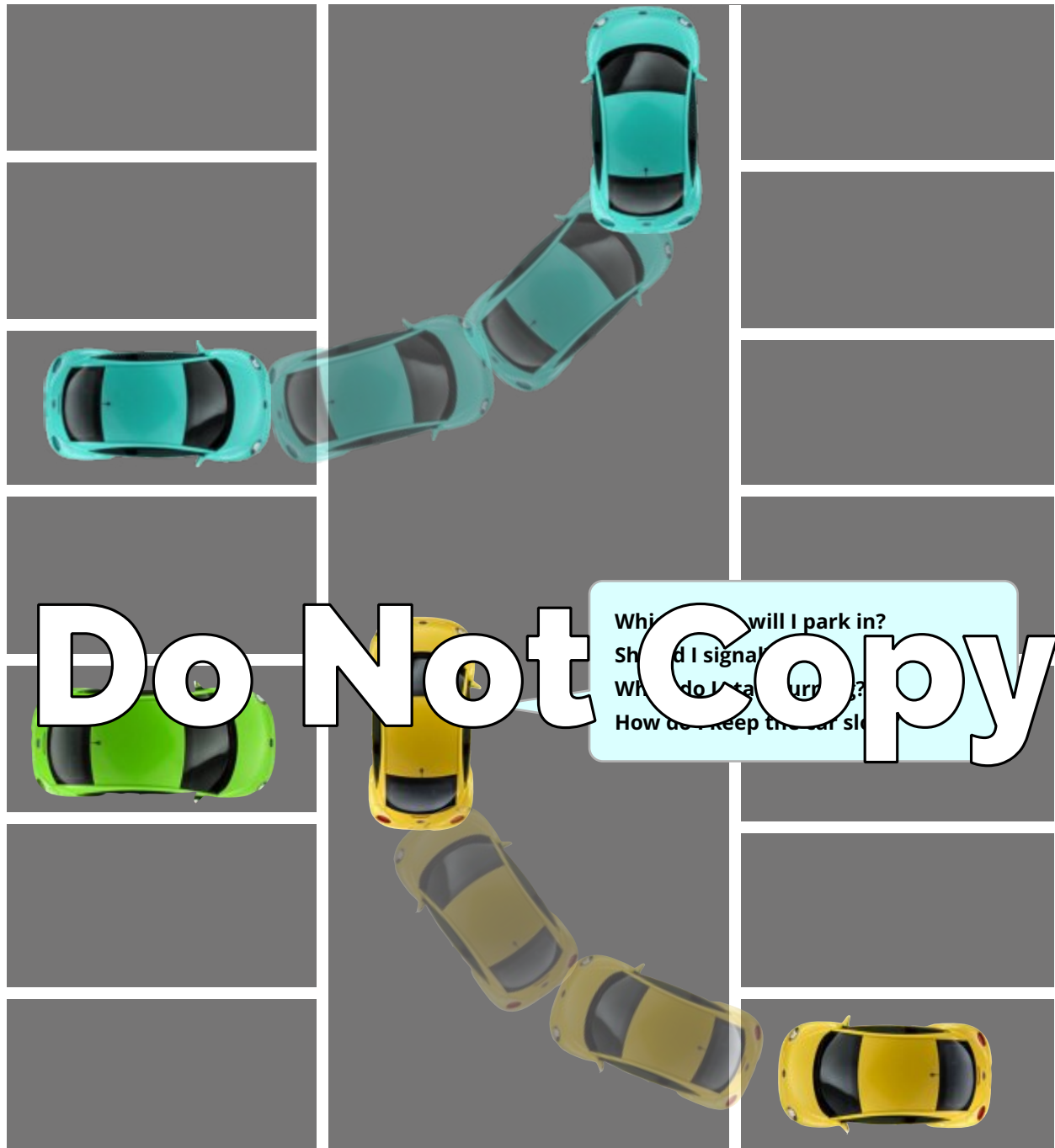
Position Speed Look

Preparation

Observation

Manoeuvre

Reverse Bay Park



Mirrors

Signal

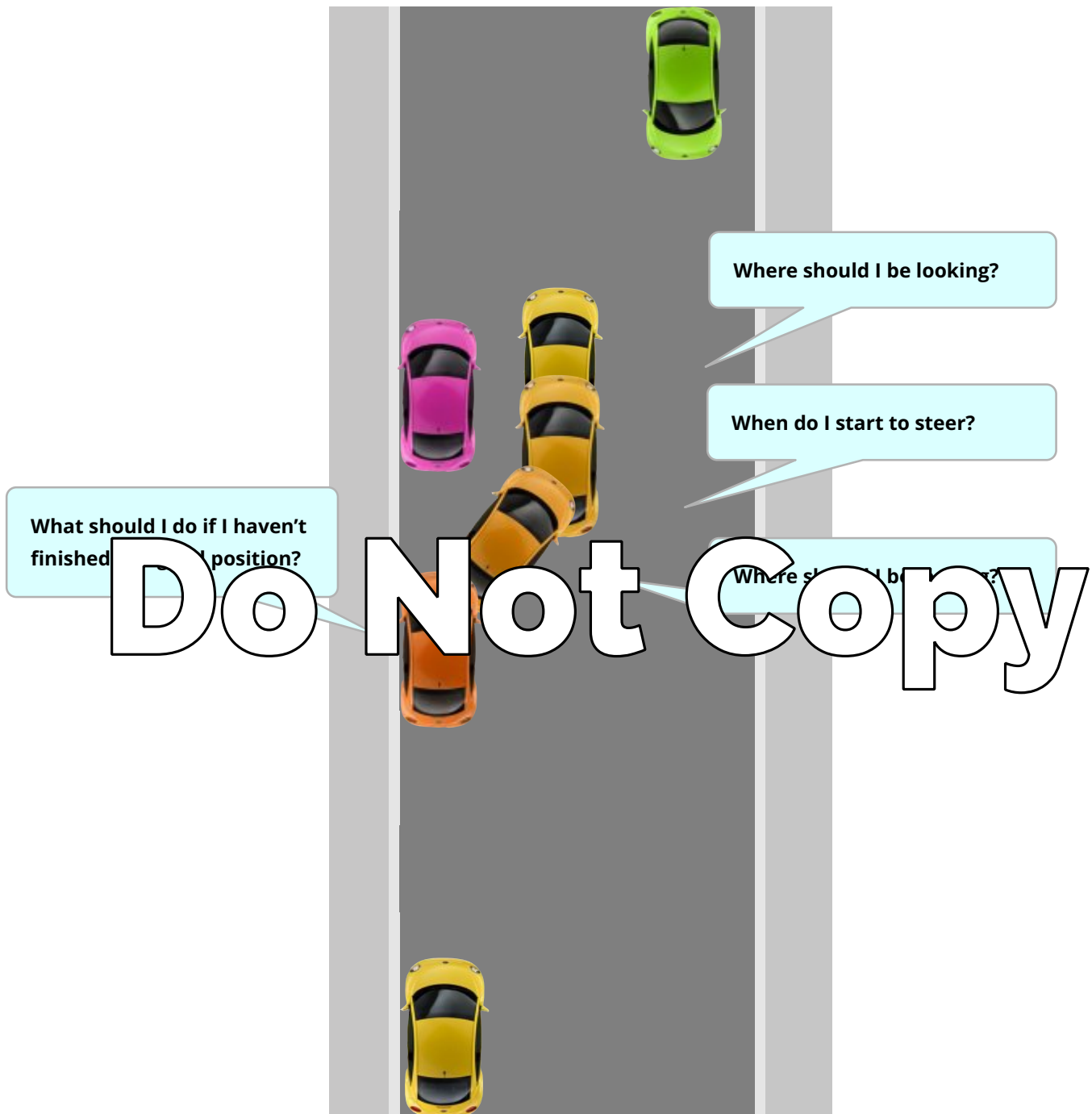
Position Speed Look

Preparation

Observation

Manoeuvre

Parallel Park



Mirrors

Signal

Position Speed Look

Preparation

Observation

Manoeuvre

Emergency Stop



Do Not Copy



What do I do if I skid?



How do I stop quickly and under control?



What factors might contribute to a skid?

Think and plan ahead



Road Signs and Road Markings



Warning



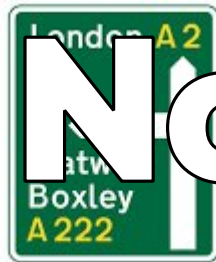
Orders - Must Not



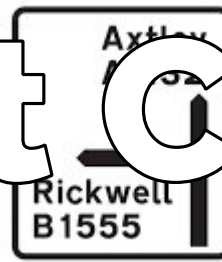
Orders - Must



Road Works



Primary
Routes



Local and non-
Primary Routes



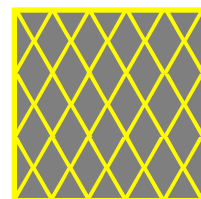
Motorways

Do Not Copy

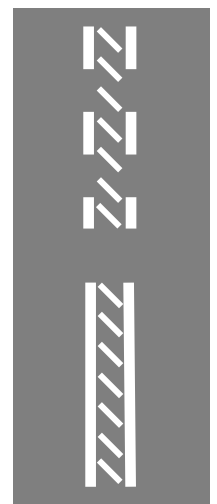
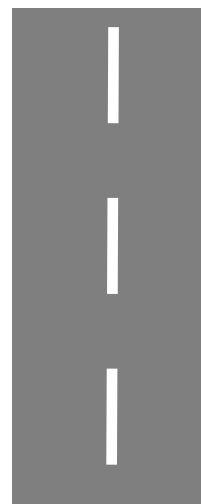
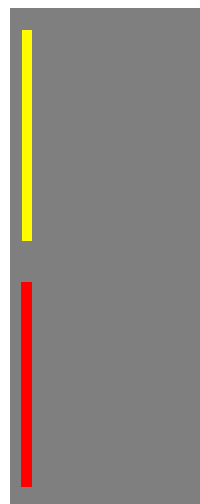
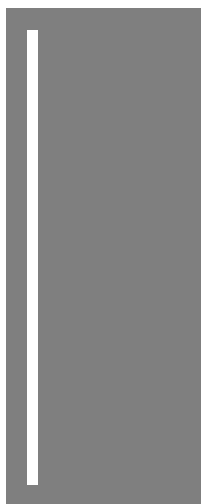
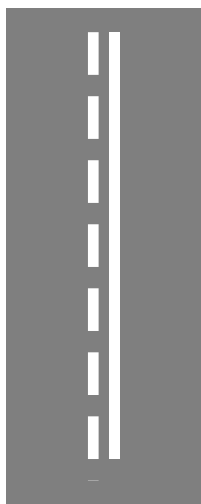


Stop

Give Way



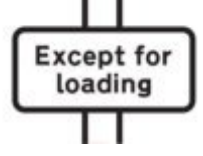
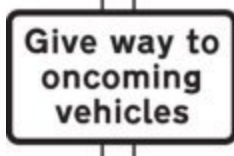
Box Junction

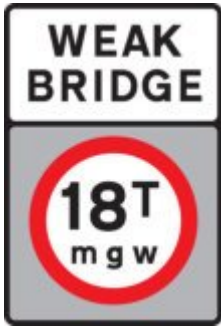


Road & Traffic Signs



Do Not Copy





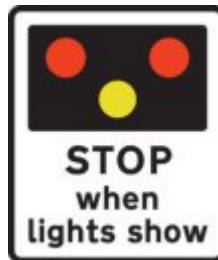


Do Not Copy



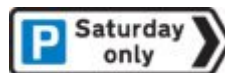


Do Not Copy





Do Not Copy



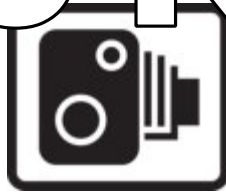


Do Not Copy





Priority over
oncoming
vehicles



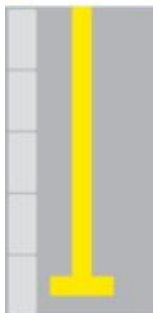
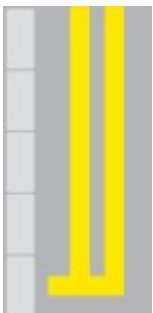
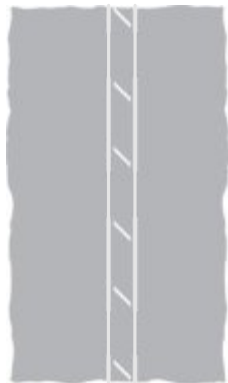
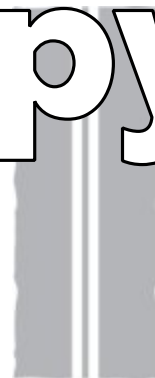
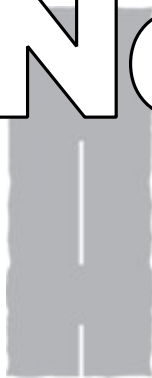
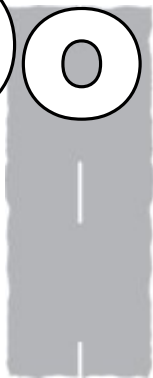
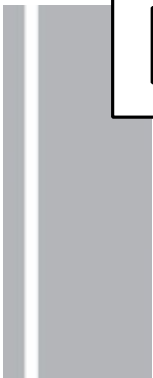
Do Not Copy

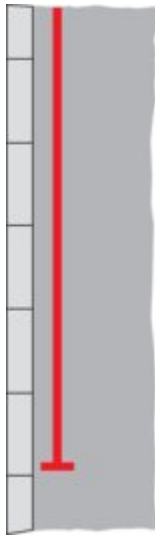
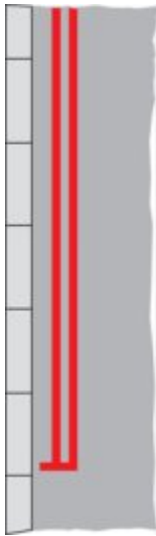
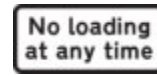
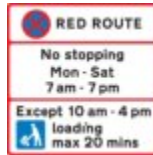


Road Markings

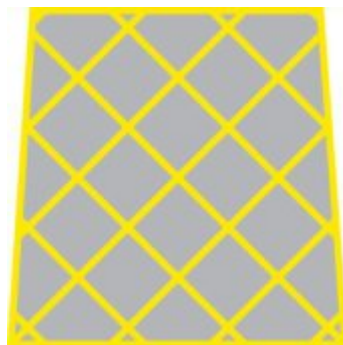
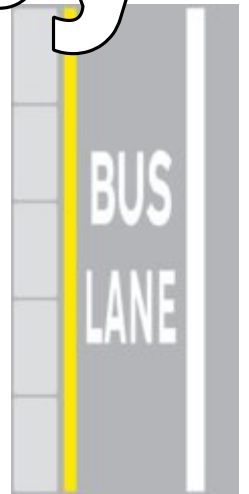


Do Not Copy





Do Not Copy



Tell Me Questions

- 1. Tell me how you'd check that the brakes are working before starting a journey.** Brakes should not feel spongy or slack. Brakes should be tested as you set off. Vehicle should not pull to one side.
- 2. Tell me where you'd find the information for the recommended tyre pressures for this car and how tyre pressures should be checked.** Manufacturer's guide, use a reliable pressure gauge, check and adjust pressures when tyres are cold, don't forget spare tyre, remember to refit valve caps.
- 3. Tell me how you make sure your head restraint is correctly adjusted so it provides the best protection in the event of a crash.** The head restraint should be adjusted so the rigid part of the head restraint is at least as high as the eye or top of the ears, and as close to the back of the head as is comfortable. Note: Some restraints might not be adjustable.
- 4. Tell me how you'd check the tyres to ensure that they have sufficient tread depth and that their general condition is safe to use on the road.** No cuts and bulges, 1.6mm of tread depth across the central three-quarters of the breadth of the tyre, and around the entire outer circumference of the tyre.
- 5. Tell me how you'd check that the headlights and tail lights are working. You don't need to exit the vehicle.** Explain you'd operate the switch (turn on ignition if necessary), then walk round vehicle (as this is a 'tell me' question, you don't need to physically check the lights).
- 6. Tell me how you'd know if there was a problem with your anti-lock braking system.** Warning light should illuminate if there is a fault with the anti-lock braking system.
- 7. Tell me how you'd check the rear indicators are working. You don't need to exit the vehicle.** Explain you'd operate the switch (turn on ignition if necessary), and check the lights. (as this is a 'tell me' question, you don't need to physically check the lights).
- 8. Tell me how you'd check the brake lights are working on this car.** Explain you'd operate the brake pedal, make use of reflections in windows or doors, or ask someone to help.
- 9. Tell me how you'd check the power-assisted steering is working before starting a journey.** If the steering becomes heavy, the system may not be working properly. Before starting a journey, 2 simple checks can be made.
Gentle pressure on the steering wheel, maintained while the engine is started, should result in a slight but noticeable movement as the system begins to operate. Alternatively turning the steering wheel just after moving off will give an immediate indication that the power assistance is functioning.
- 10. Tell me how you'd switch on the rear fog light(s) and explain when you'd use it/them. You don't need to exit the vehicle.** Operate switch (turn on dipped headlights and ignition if necessary). Check warning light is on. Explain use.
- 11. Tell me how you switch your headlight from dipped to main beam and explain how you'd know the main beam is on.** Operate switch (with ignition or engine on if necessary), check with main beam warning light.

Tell Me Questions (under bonnet)

12. Open the bonnet and tell me how you'd check that the engine has sufficient oil.

Identify dipstick/oil level indicator, describe check of oil level against the minimum and maximum markers.

13. Open the bonnet and tell me how you'd check that the engine has sufficient engine coolant.

Identify label/dipstick, markings, describe check, describe how to top up to correct level.

14. Open the bonnet and tell me how you'd check that you have a safe level of hydraulic brake fluid.

Identify reservoir, check level against high and low markings.

Show Me Questions

When it's safe to do so, can you show me how you wash and clean the rear windscreen?

When it's safe to do so, can you show me how you wash and clean the front windscreen?

When it's safe to do so, can you show me how you'd switch on your dipped headlights?

When it's safe to do so, can you show me how you'd set the rear demister?

When it's safe to do so, can you show me how you'd operate the horn?

When it's safe to do so, can you show me how you'd demist the front windscreen?

When it's safe to do so, can you show me how you'd open and close the side window?

Name

Licence no.

Date

Time

Signature

☐ Eyesight test

Manoeuvres

- ☐ Reverse / Right ☐ Reverse park (road)
☐ Reverse park (car park) ☐ Forward park

☐ Control ☐ S ☐ D
☐ Serv ☐ S ☐ D

☐ Show me / Tell me

Show me / Tell me ☐ S ☐ D

☐ Controlled stop

Controlled stop ☐ S ☐ D

Control

Accelerator ☐ S ☐ D

Clutch ☐ S ☐ D

Gears ☐ S ☐ D

Footbrake ☐ S ☐ D

Parking brake ☐ S ☐ D

Steering ☐ S ☐ D

Precautions ☐ S ☐ D

Ancillary Controls ☐ S ☐ D

Move off

Safety ☐ S ☐ D

Control ☐ S ☐ D

Use of Mirrors

Signalling ☐ S ☐ D

Change direction ☐ S ☐ D

Change speed ☐ S ☐ D

Signals

Necessary ☐ S ☐ D

Correctly ☐ S ☐ D

Timed ☐ S ☐ D

Junctions

Approach speed ☐ S ☐ D

Observation ☐ S ☐ D

Turning right ☐ S ☐ D

Turning left ☐ S ☐ D

Cutting corners ☐ S ☐ D

Judgement

Overtaking ☐ S ☐ D

Meeting ☐ S ☐ D

Crossing ☐ S ☐ D

Positioning

Normal driving ☐ S ☐ D

Lane discipline ☐ S ☐ D

Pedestrian crossings ☐ S ☐ D

Position/ normal stop ☐ S ☐ D

Distance ☐ S ☐ D

Distance ☐ S ☐ D

Following distance ☐ S ☐ D

Use of speed ☐ S ☐ D

Progress

Appropriate speed ☐ S ☐ D

Undue hesitation ☐ S ☐ D

Response to signs / signals

Traffic signs ☐ S ☐ D

Road markings ☐ S ☐ D

Traffic lights ☐ S ☐ D

Traffic controllers ☐ S ☐ D

Other road users ☐ S ☐ D

Total faults

Pass ☐ Fail ☐

☐ ETA ☐ Physical ☐ Verbal ☐

☐ ECO ☐ Control ☐ Planning ☐