

Index

1. Contents
2. Basic Procedures
3. Cockpit checks
4. Mirrors
5. Clutch
6. Moving off
7. Pull up on the left (stopping)
8. Angled start
9. Emerging left
10. Emerging right
11. Turning left
12. Turning right
13. Other junctions
14. Crossroads
15. Other crossroads
16. Traffic lights (offside to offside)
17. Traffic lights (nearside to nearside)
18. Roundabouts left
19. Roundabouts ahead
20. Roundabouts right
21. Roundabouts other
22. Spiral Roundabouts
23. Spiral Roundabouts with traffic lights
24. Mini roundabouts
25. Mini roundabouts other
26. One way streets
27. Meeting traffic
28. Positioning
29. Overtaking
30. Pedestrian crossings
31. Zebra crossings
32. Light controlled crossings
33. Dual carriageways
34. Dual carriageways
35. Dual carriageways
36. Motorways
37. Turn in the road
38. Reversing left
39. Pull up on right & reverse
40. Forward bay park
41. Reverse bay park
42. Parallel park
43. Emergency Stop

Road signs and markings

Tell me questions

Show me questions

Test marking sheet

Basic Procedures

P O M

Preparation

Get the car ready

- gas
- in gear
- biting point
- handbrake ready

Observation

Look all around

- interior mirror
- door mirrors
- ahead
- blind spots

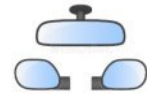
Rear window if reversing

Manoeuvre

- Release handbrake
- Control speed of car with pedals
- Steer as required
- Continue observation ahead and behind

M S P S L

Mirrors



Signal



Position



Speed
(& gears)



Look

L A D A

LOOK ASSESS
DECIDE ACT

S C A L P

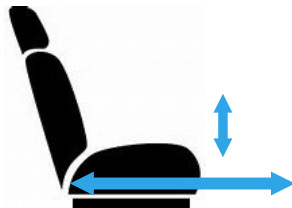
Always choose somewhere that is a
Safe, **Convenient** and
Lawful Place

Cockpit Checks

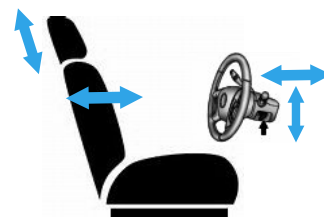
Doors



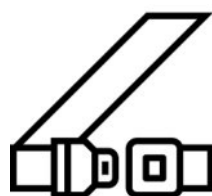
Seat Base



Seat Back/Steering Wheel



Seat Belts



Mirrors



Mirrors



Mirror Blind
Spot Area

Mirror Blind
Spot Area



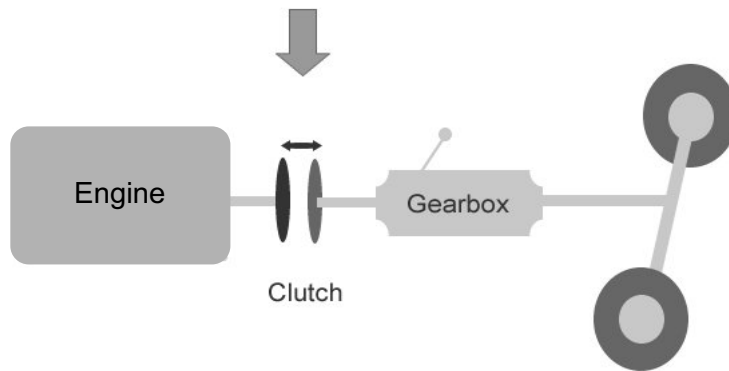
Door Mirror

Door Mirror

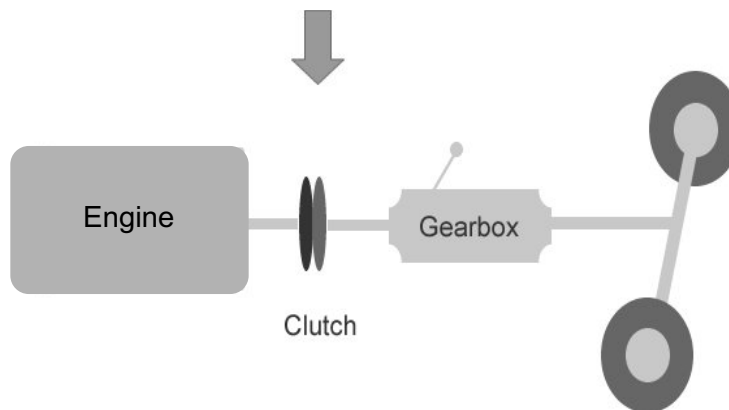
Interior Mirror

Clutch

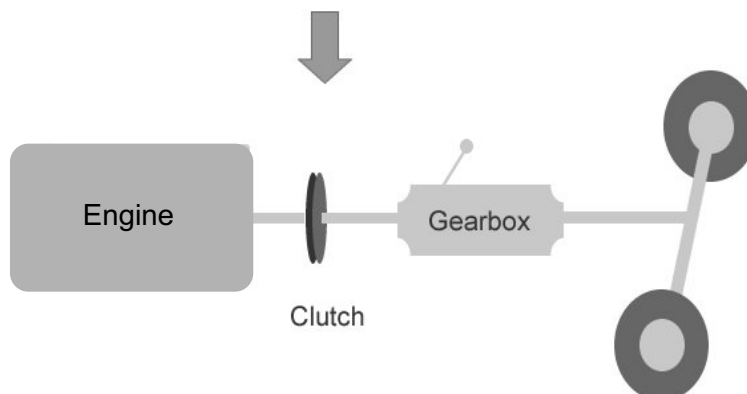
Clutch pedal down = plates pushed apart



Clutch partly up = plates just touching (biting point)



Clutch fully up = plates gripping on



Moving Off

Preparation

Clutch down



First gear



Gas



Biting point



Observation

Mirrors



Ahead



Blind Spot



Signal if necessary



Manoeuvre

Release handbrake



Ease clutch up slowly



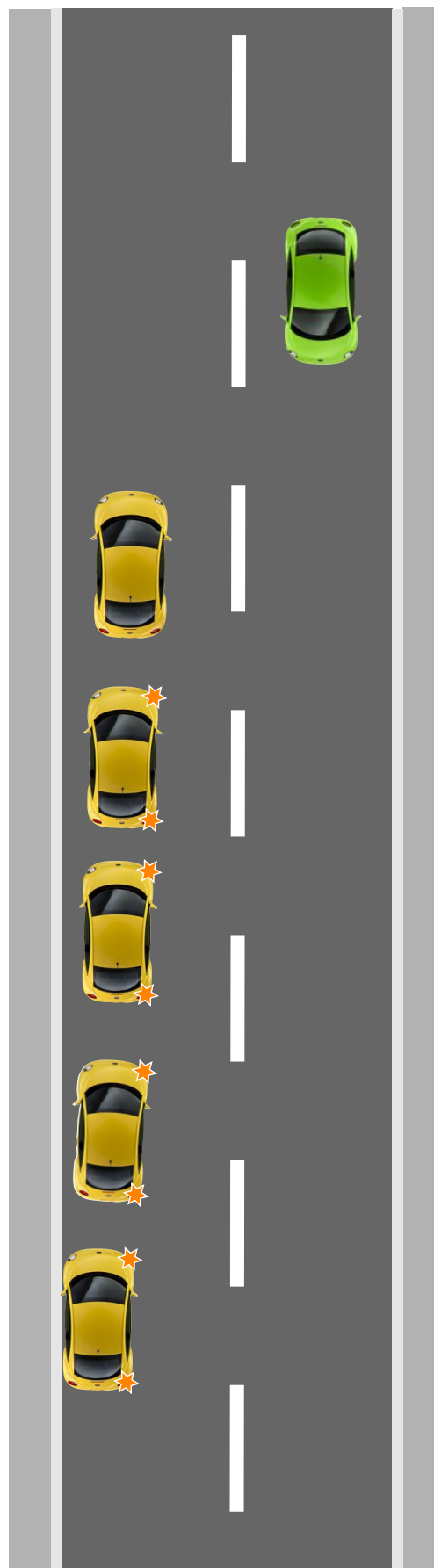
Increase gas



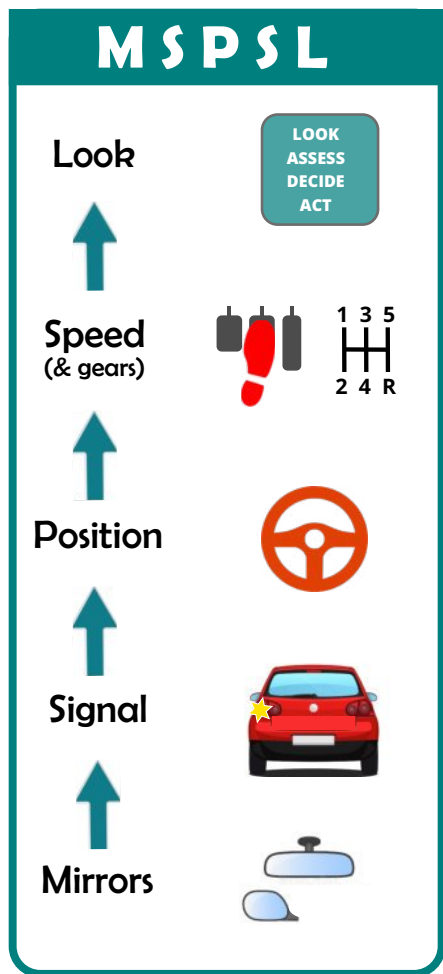
Steer away from the kerb & straighten up



Check mirrors
Cancel signal



Pull up Left

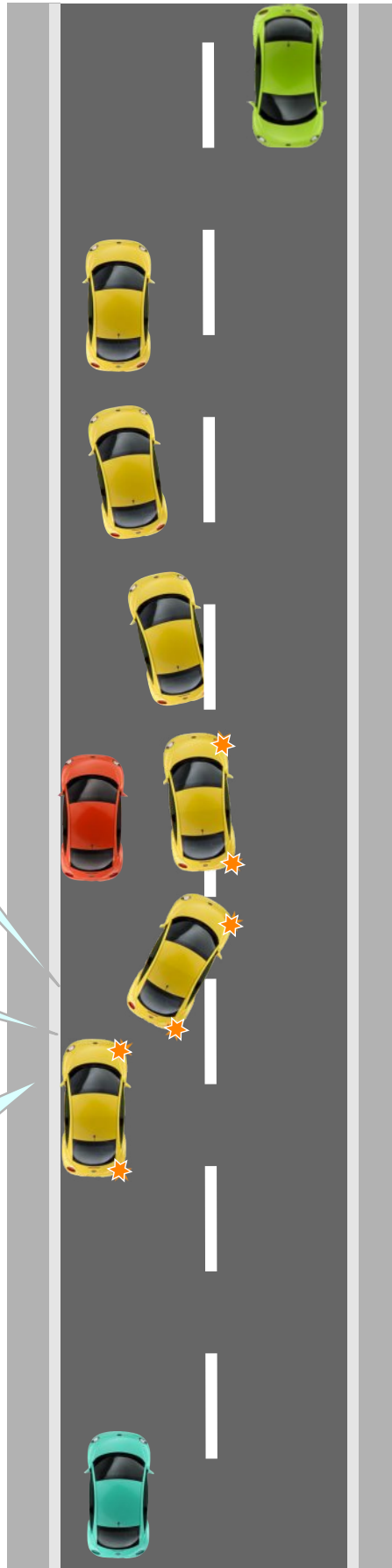


What's happening behind?

Should I signal?

Where can I stop that is
Safe?
Convenient?
Lawful?

Angled Start



Where should I look?

Should I signal?

How will I keep the car slow?

Preparation

Clutch down



First gear



Gas



Biting point



Observation

Mirrors



Ahead



Blind Spot



Signal if necessary



Manoeuvre

Release handbrake



Ease clutch up slowly



Increase gas



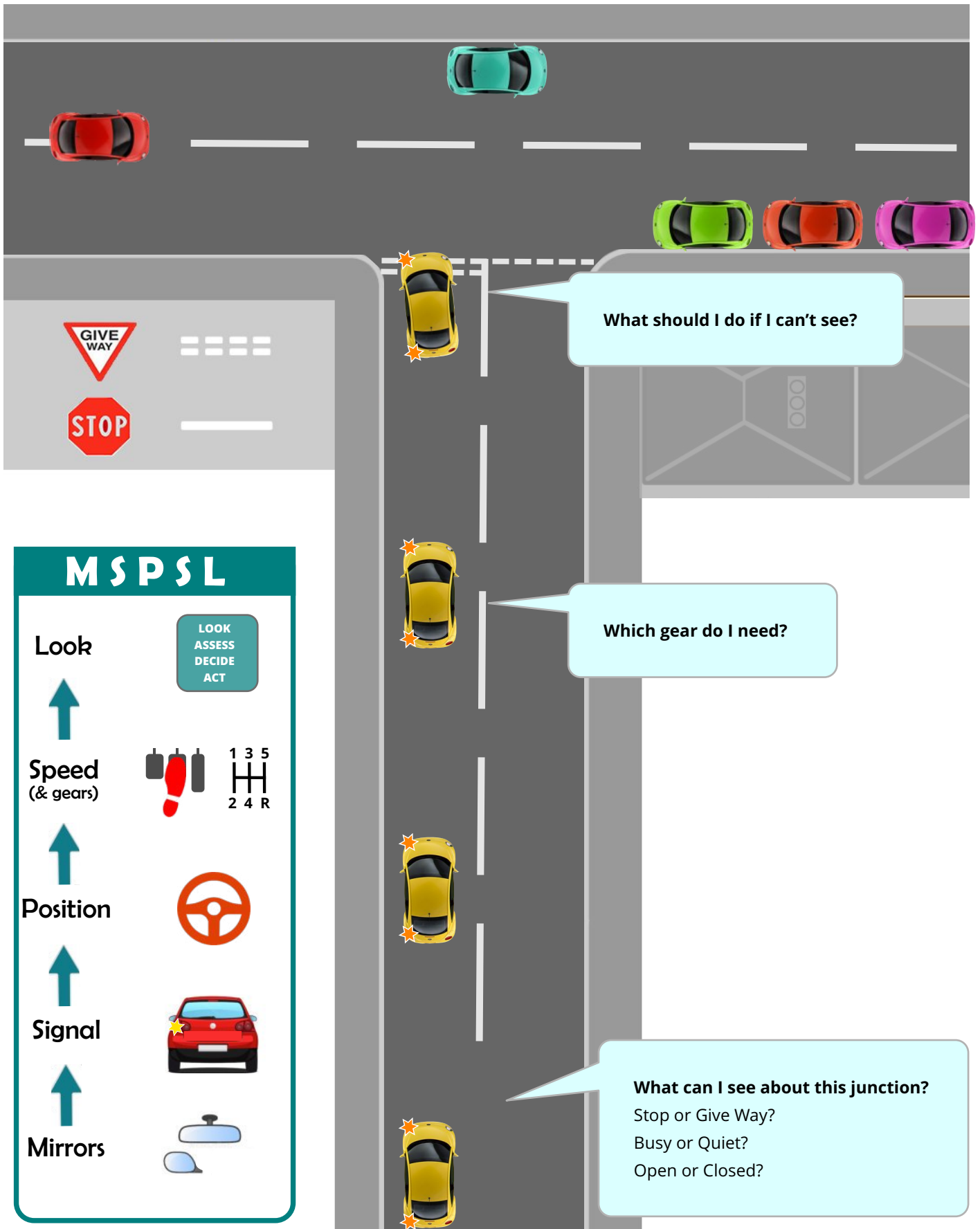
Steer away from the kerb & straighten up then steer in to normal driving position



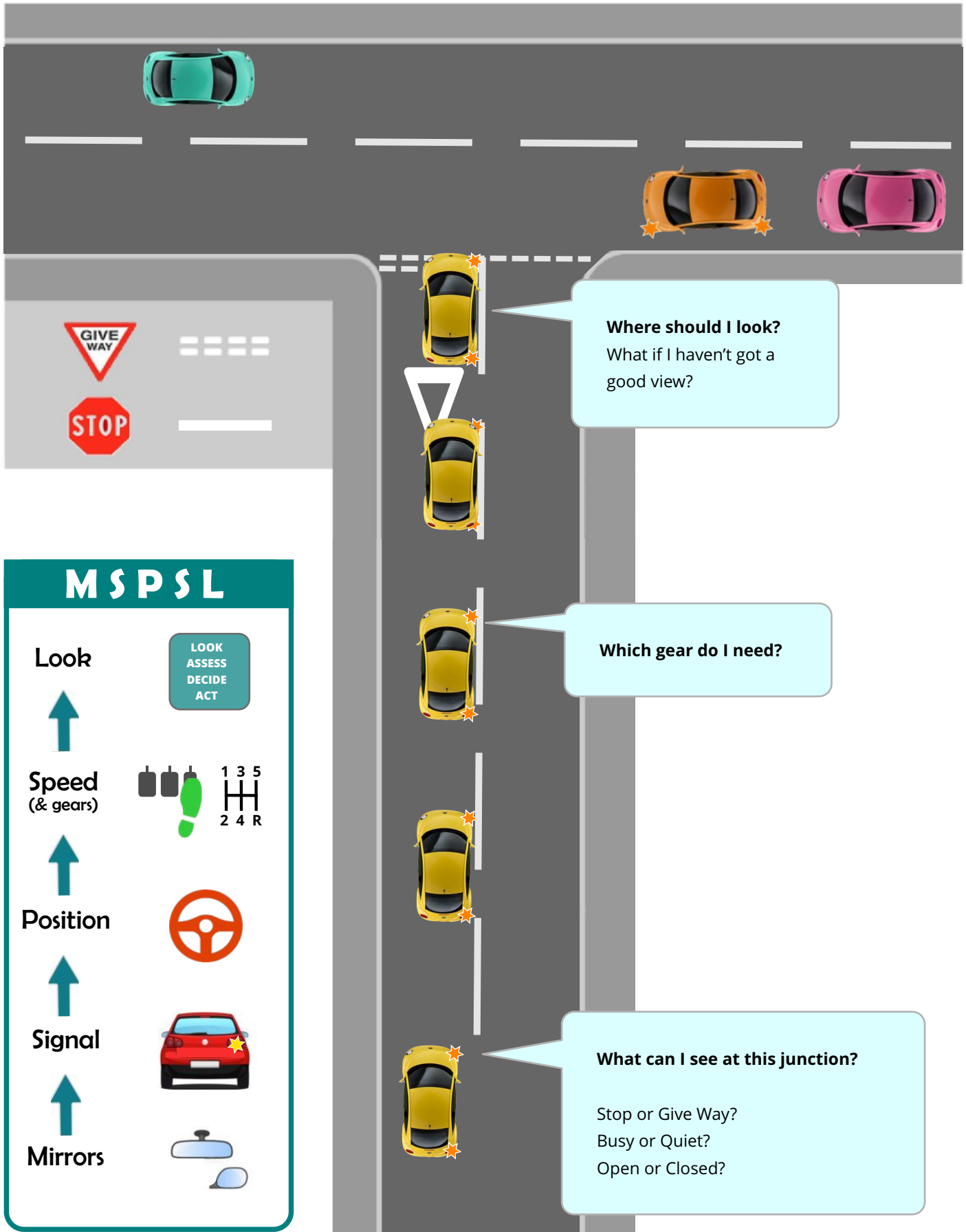
Check mirrors



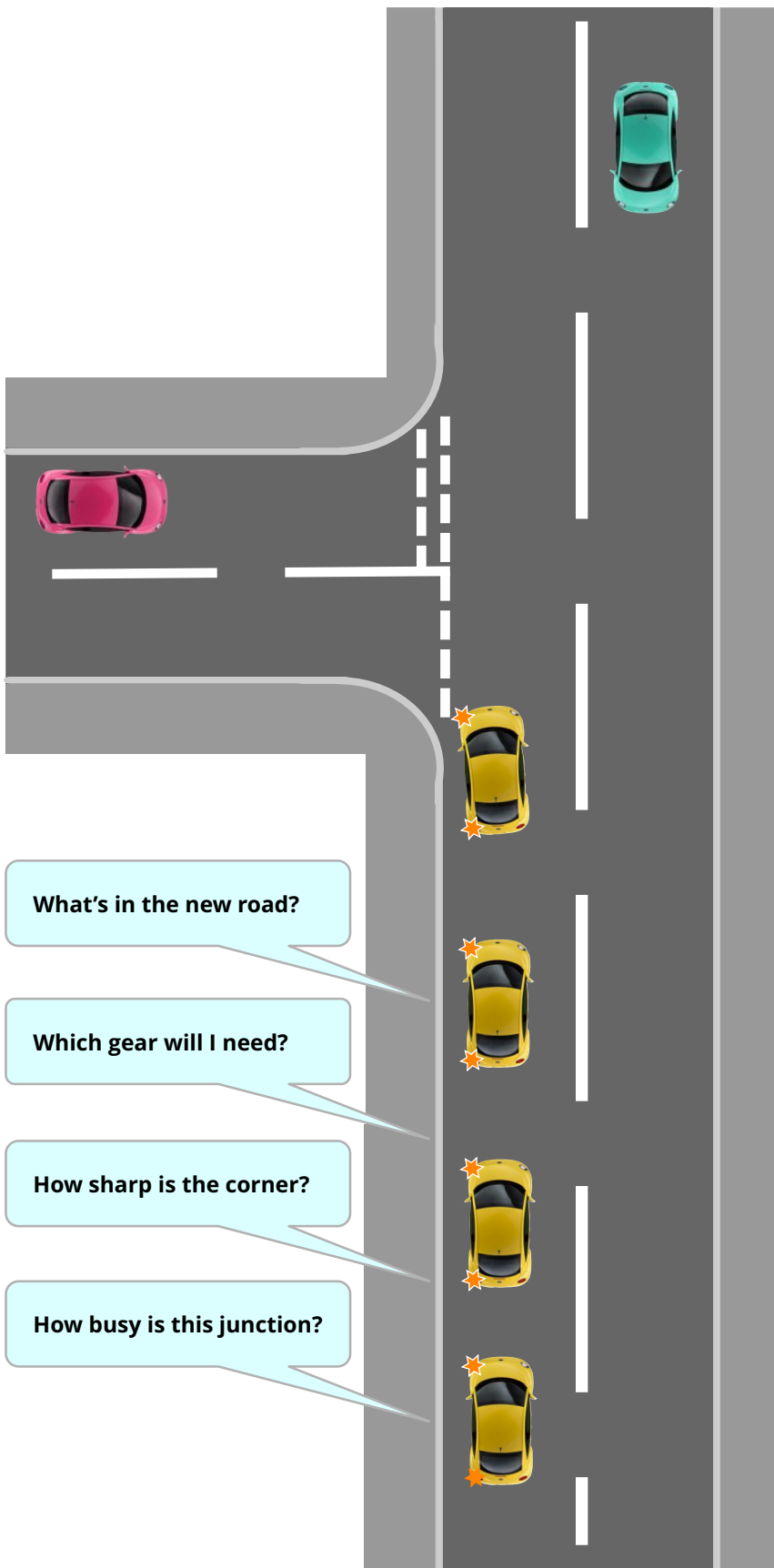
Emerging Left







Emerging Right



Turning Left



MSPSL

Look	<div>LOOK ASSESS DECIDE ACT</div>
Speed (& gears)	 <div>1 3 5 2 4 R</div>
Position	
Signal	
Mirrors	

Turning Right



MSPSL

Look



Speed
(& gears)



LOOK
ASSESS
DECIDE
ACT

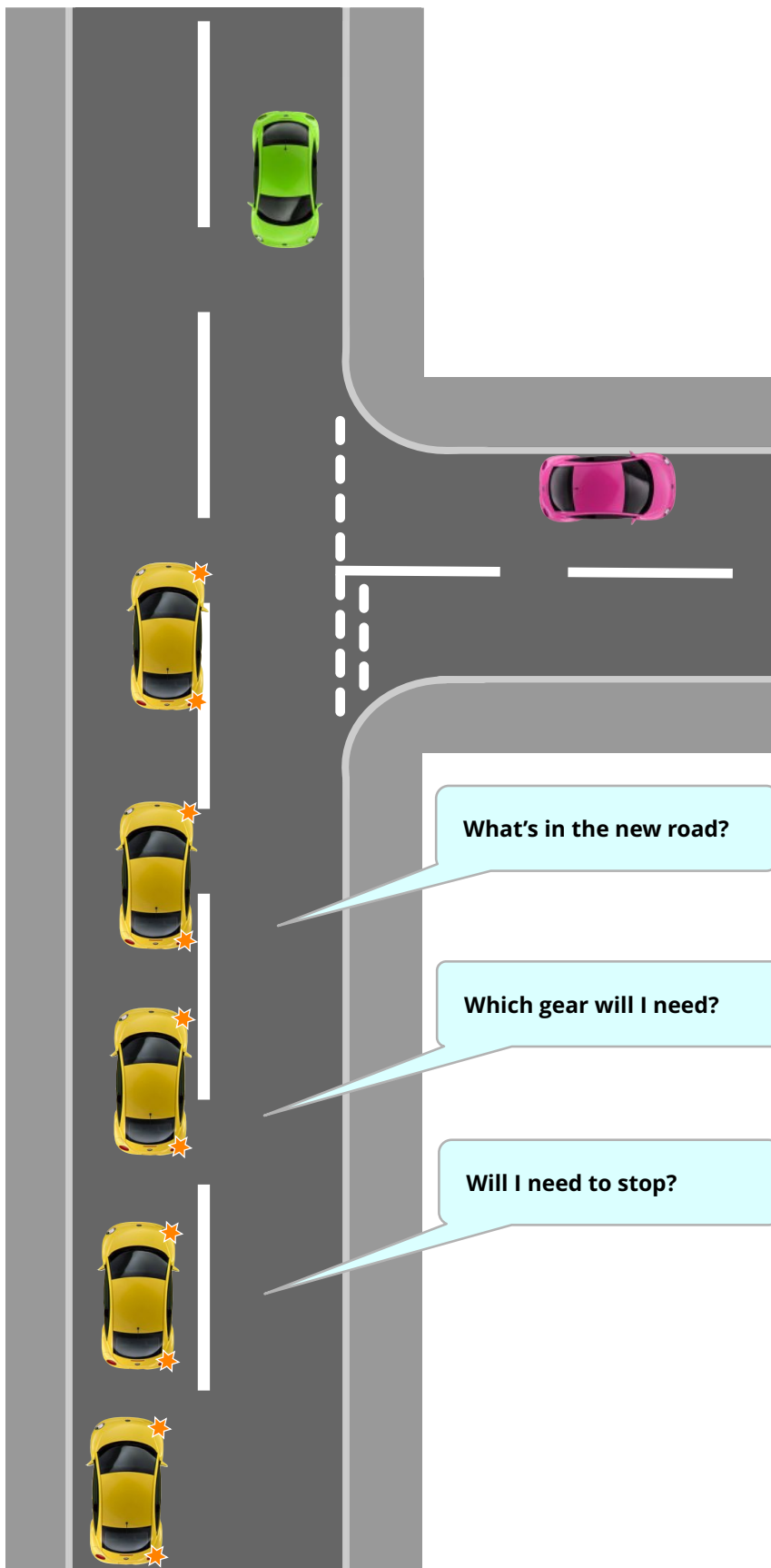
Position



Signal



Mirrors

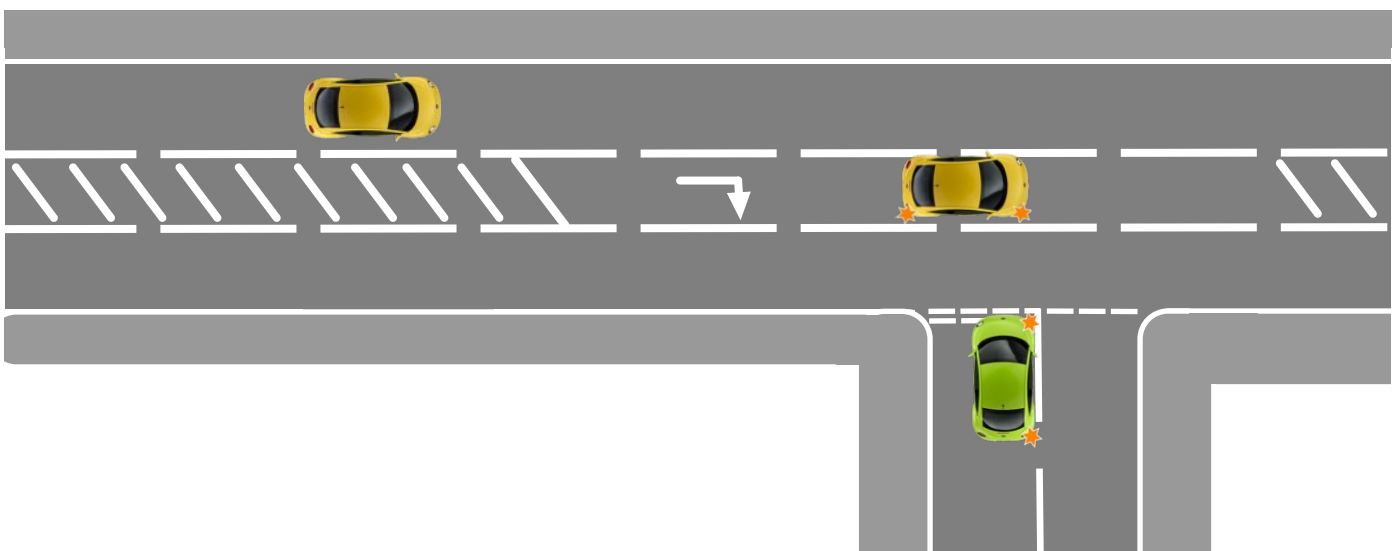
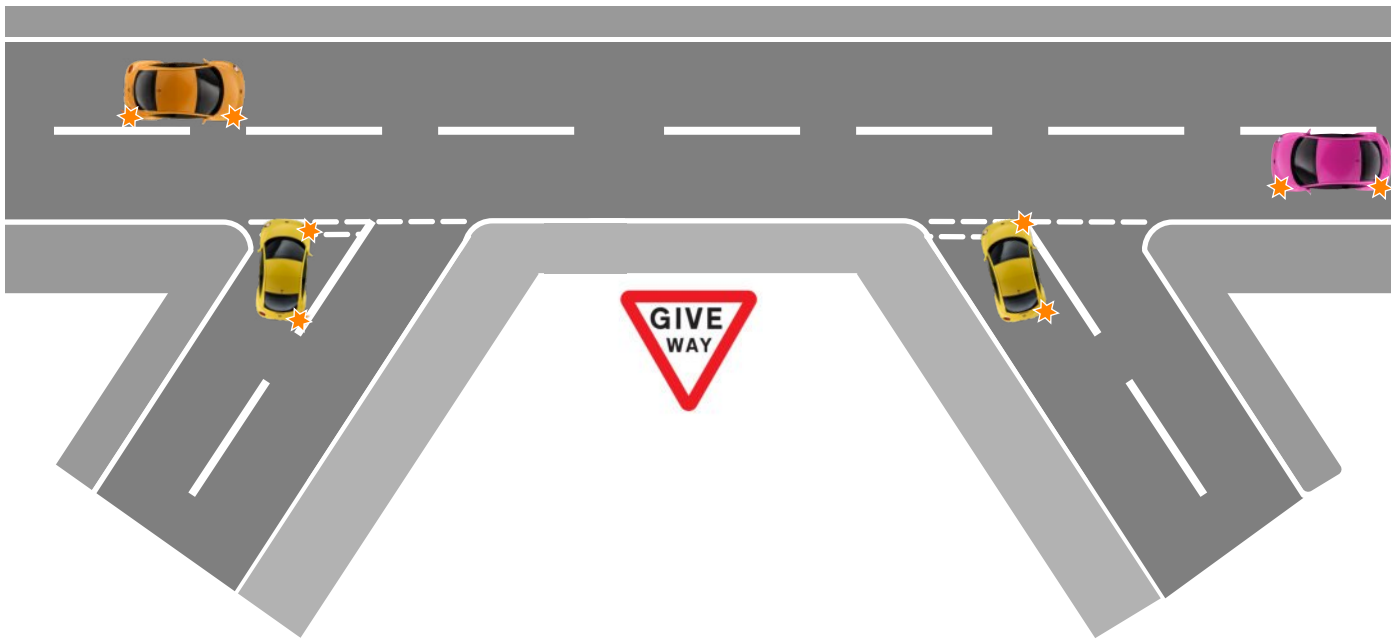


What's in the new road?

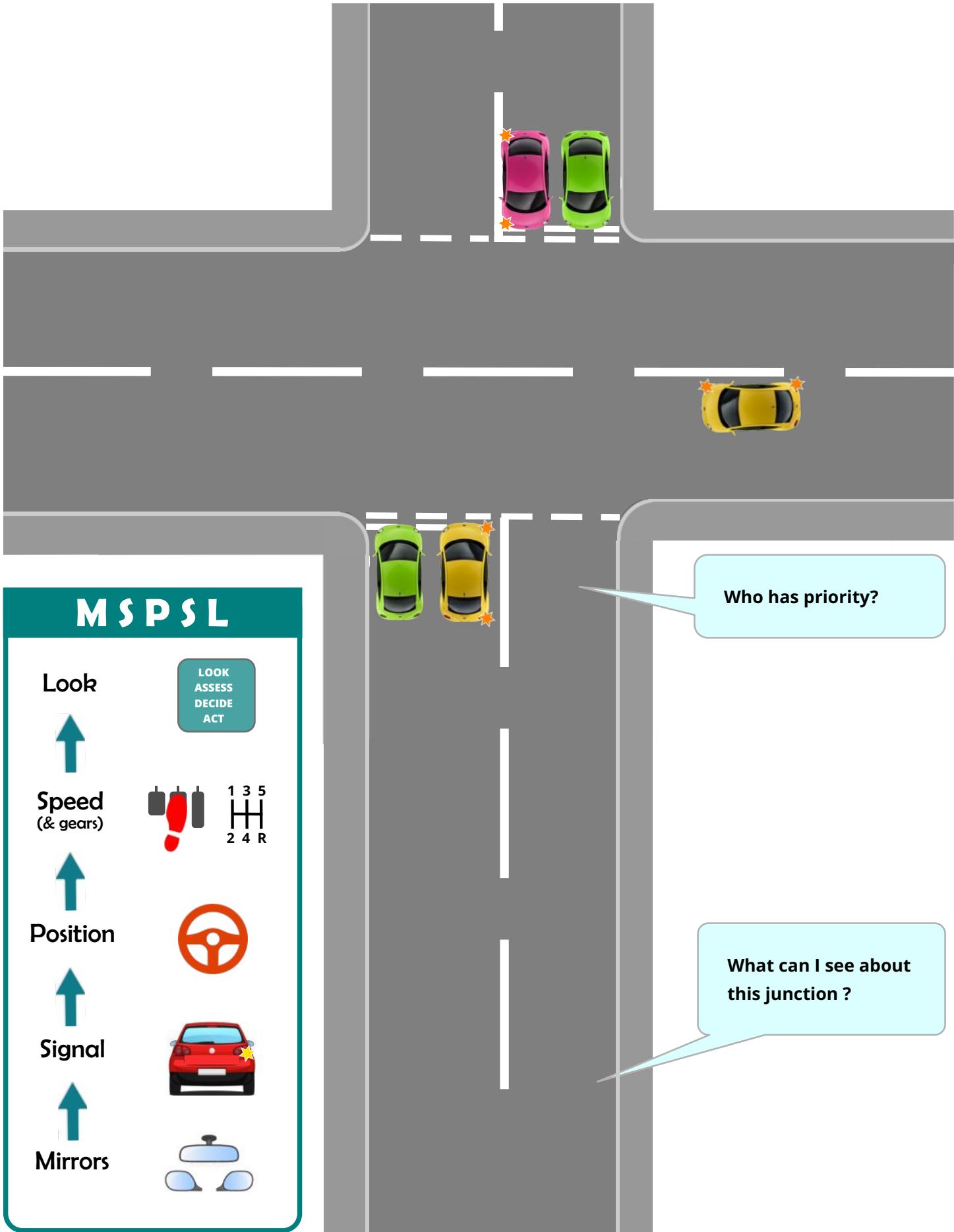
Which gear will I need?

Will I need to stop?

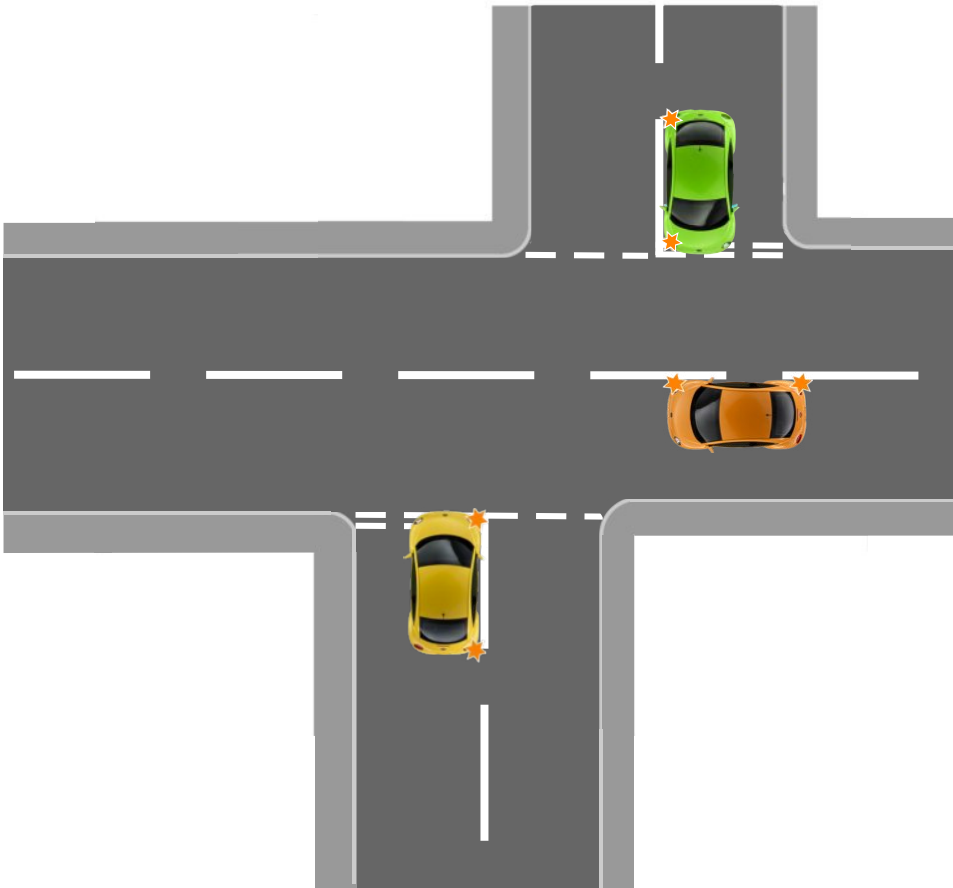
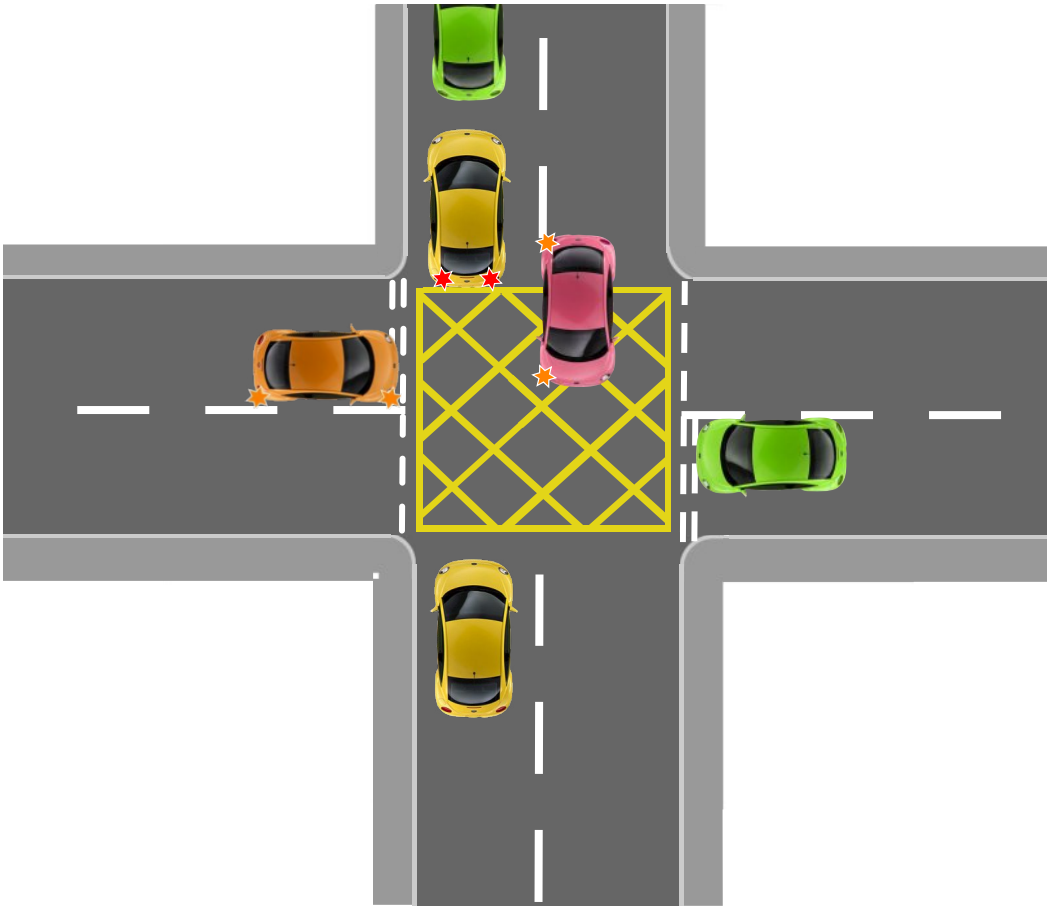
Other Junctions



Crossroads



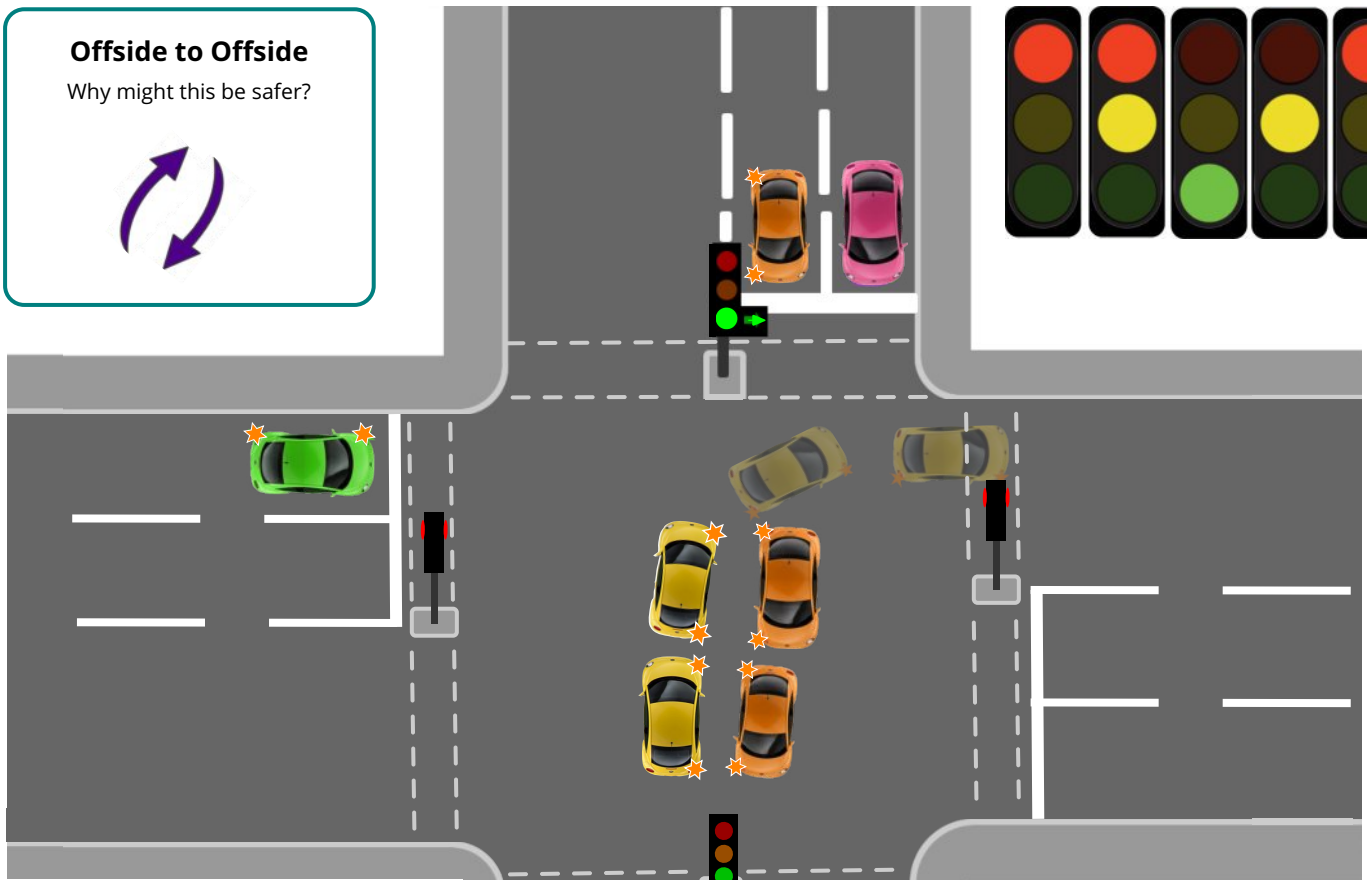
Other Cross Roads



Traffic Lights

Offside to Offside

Why might this be safer?



MSPSL

Look



LOOK
ASSESS
DECIDE
ACT

Speed
(& gears)



Position



Signal



Mirrors



Is it safe to proceed into the junction?

What is everyone else doing?
What position should I take up?

At what stage am I committed to go even
if the lights change to amber?

What can I see about this junction even
from this far back?

Traffic Lights



Nearside to Nearside
Why might this be necessary?



MSPSL

Look



Speed
(& gears)



LOOK
ASSESS
DECIDE
ACT

Position



Signal



Mirrors

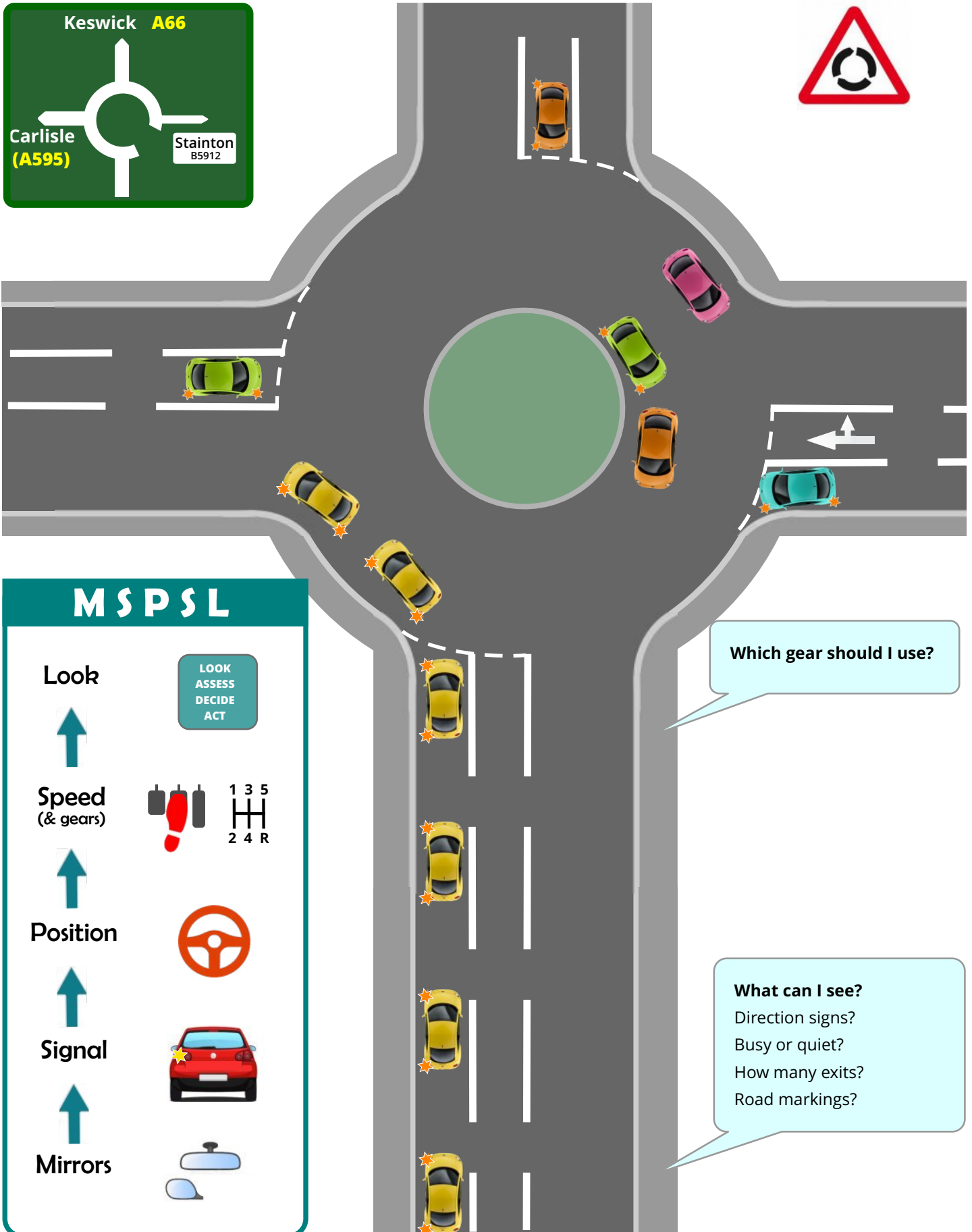
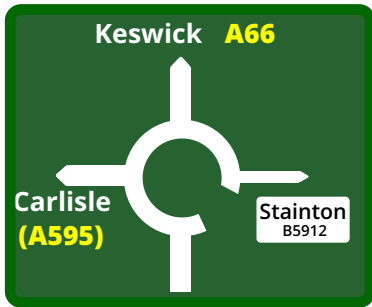


Is it safe to proceed into the junction?
What is everyone else doing?
What position should I take up?

At what stage am I committed to go
even if the lights change to amber?

What can I see about this junction
even from this far back?

Roundabouts - Left

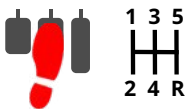


MSPSL

Look



Speed
(& gears)



LOOK
ASSESS
DECIDE
ACT

Position



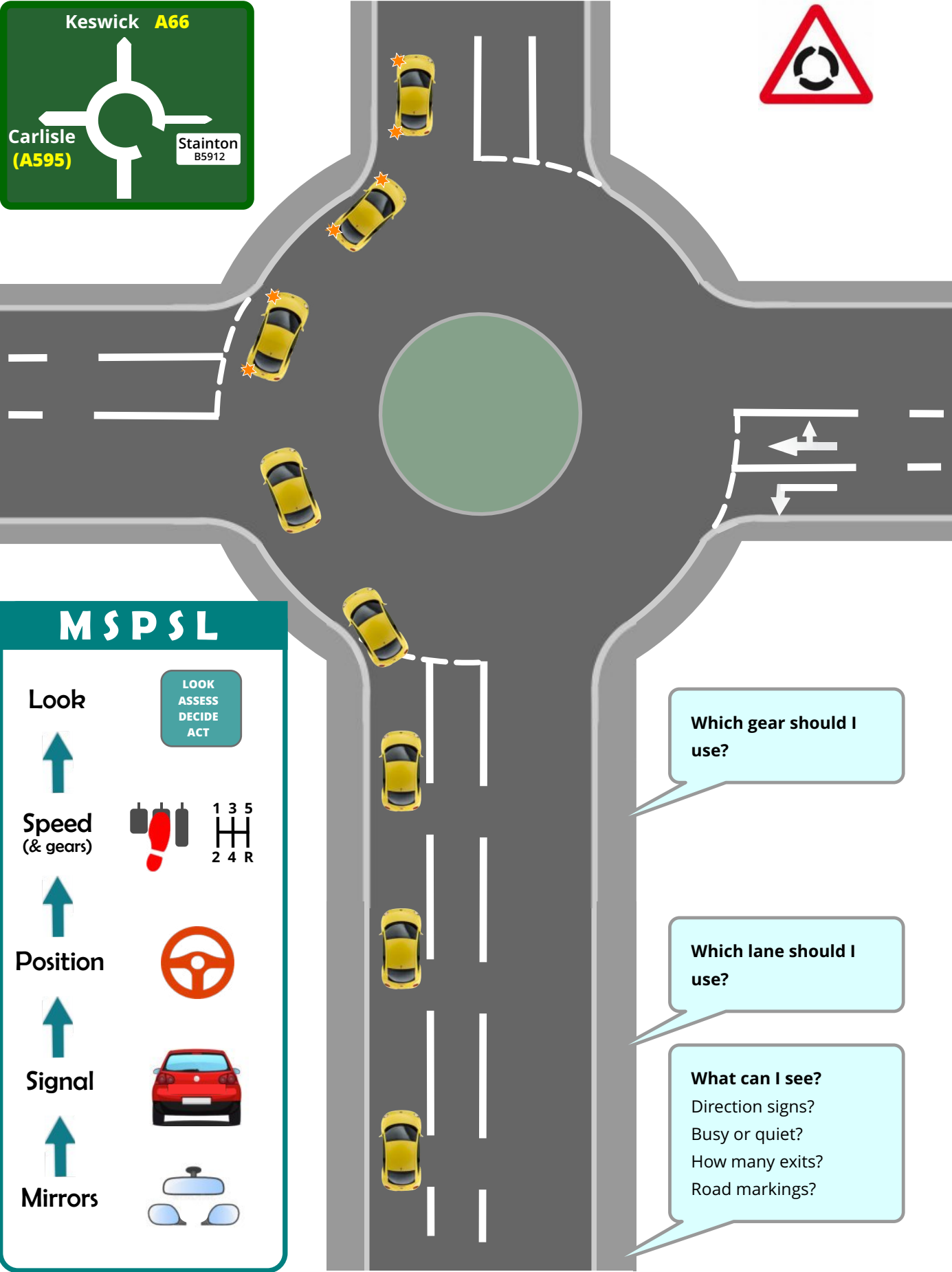
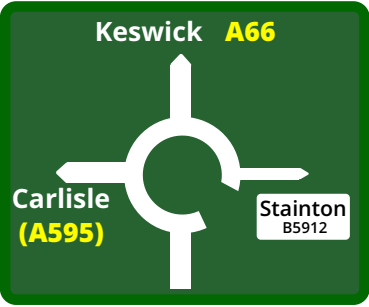
Signal



Mirrors



Roundabouts - Ahead



MSPSL

Look

Speed (& gears)

Position

Signal

Mirrors

LOOK
ASSESS
DECIDE
ACT

1 3 5
2 4 R

Steering wheel icon

Car icon

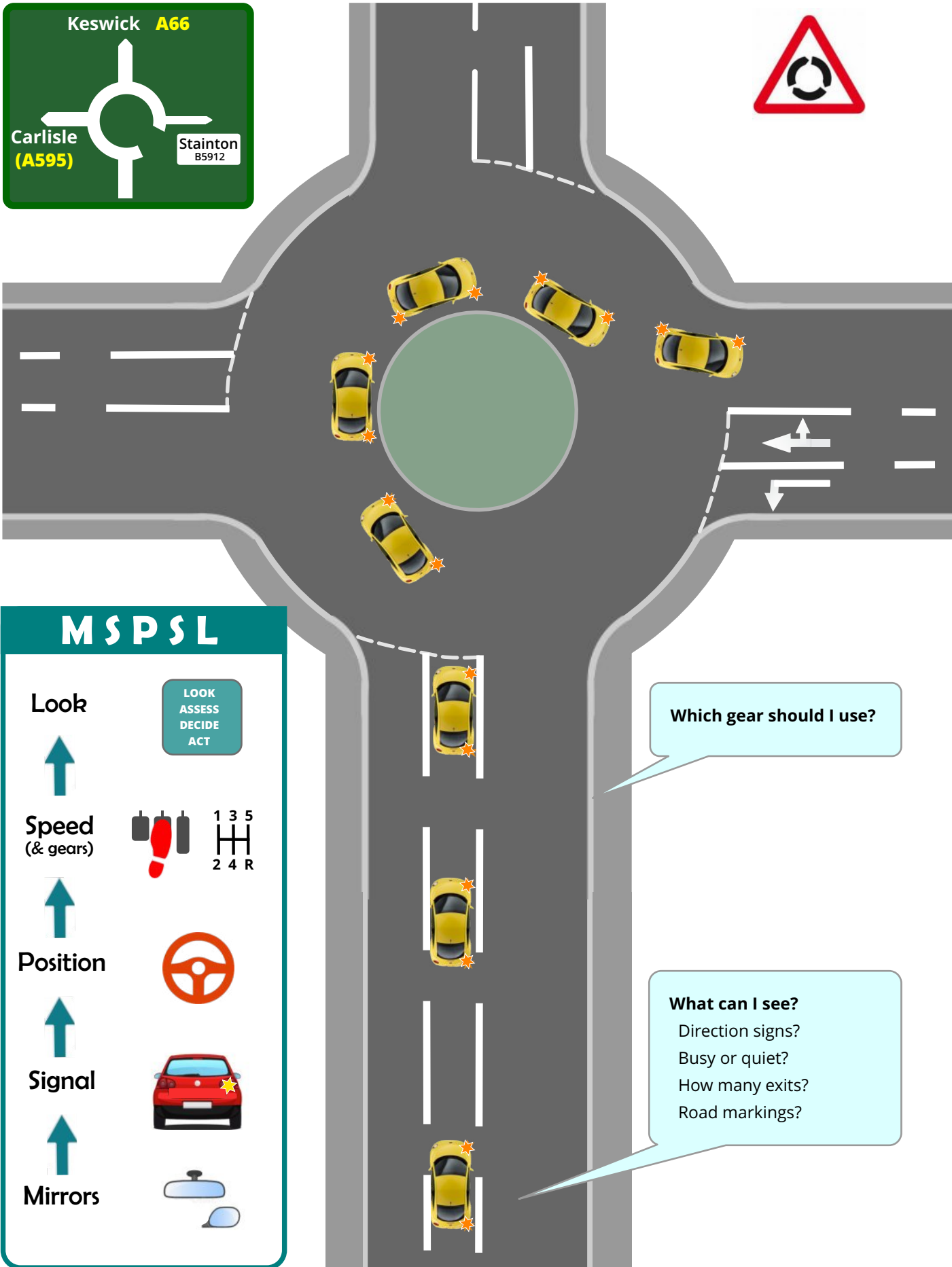
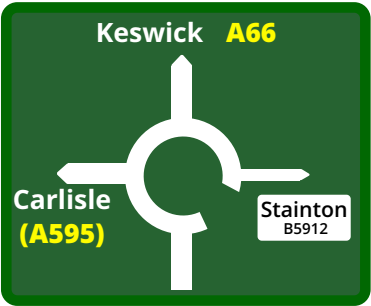
Rearview mirror icon

Which gear should I use?

Which lane should I use?

What can I see?
Direction signs?
Busy or quiet?
How many exits?
Road markings?

Roundabouts - Right



MSPSL

Look

Speed (& gears)

Position

Signal

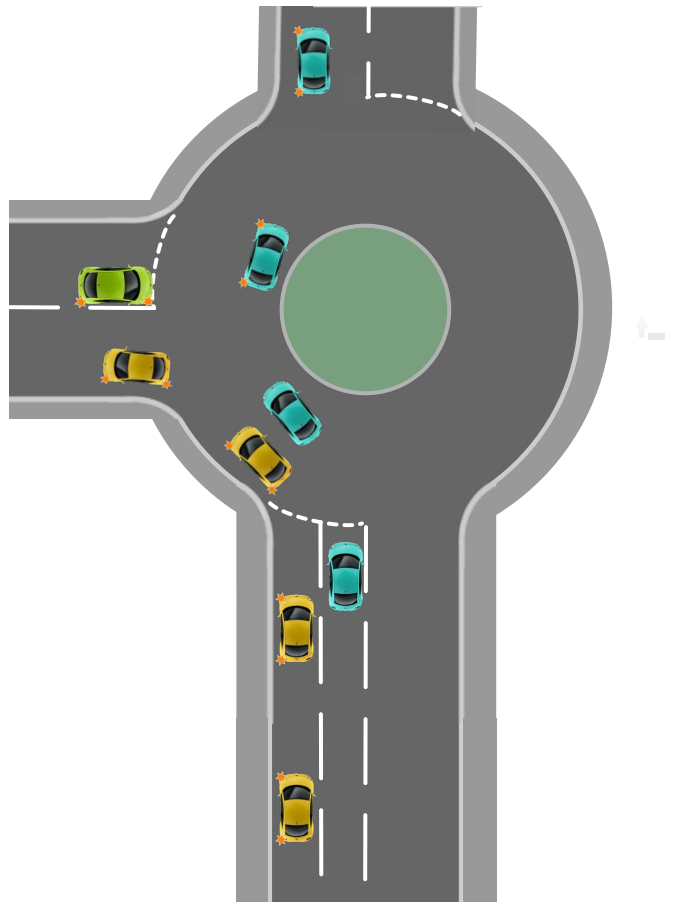
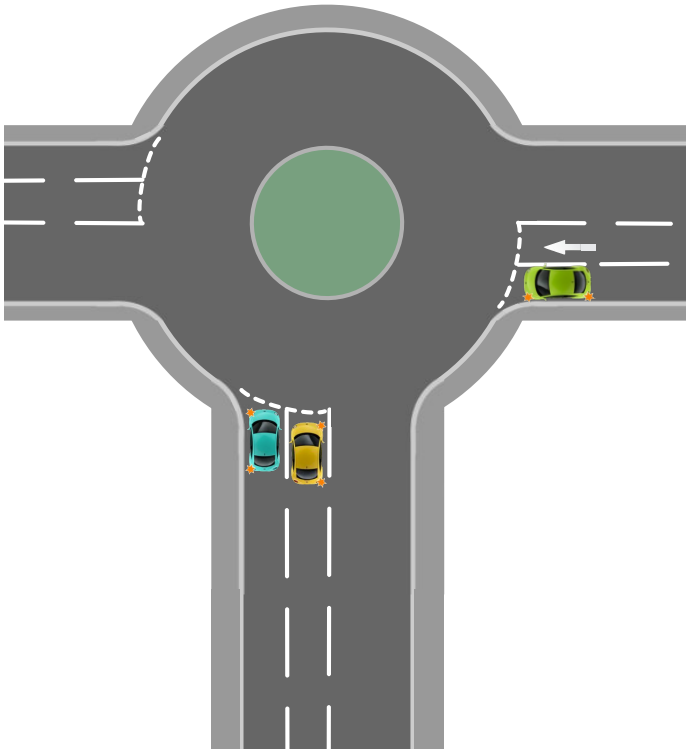
Mirrors

LOOK
ASSESS
DECIDE
ACT

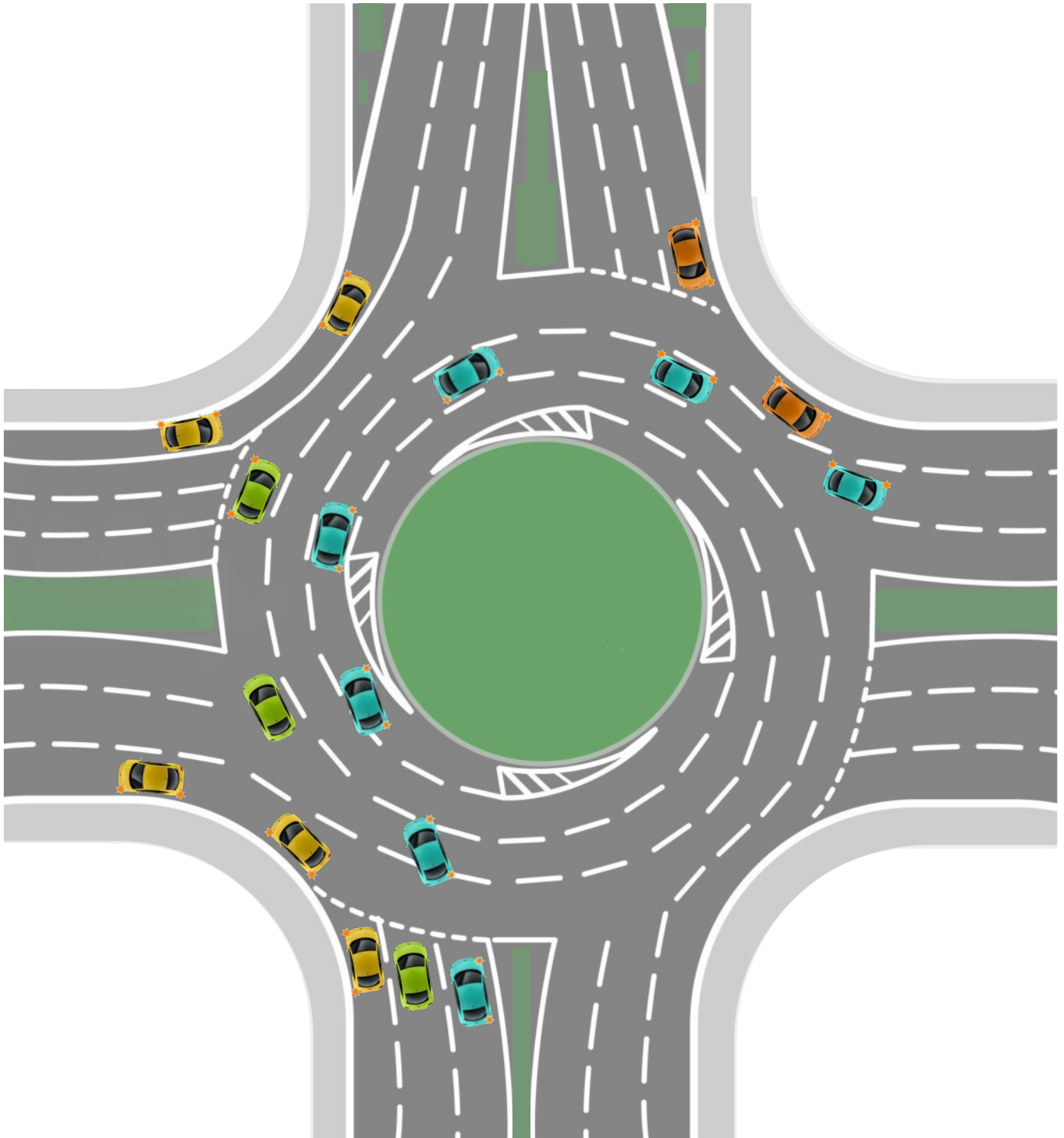
1 3 5
2 4 R

What can I see?
Direction signs?
Busy or quiet?
How many exits?
Road markings?

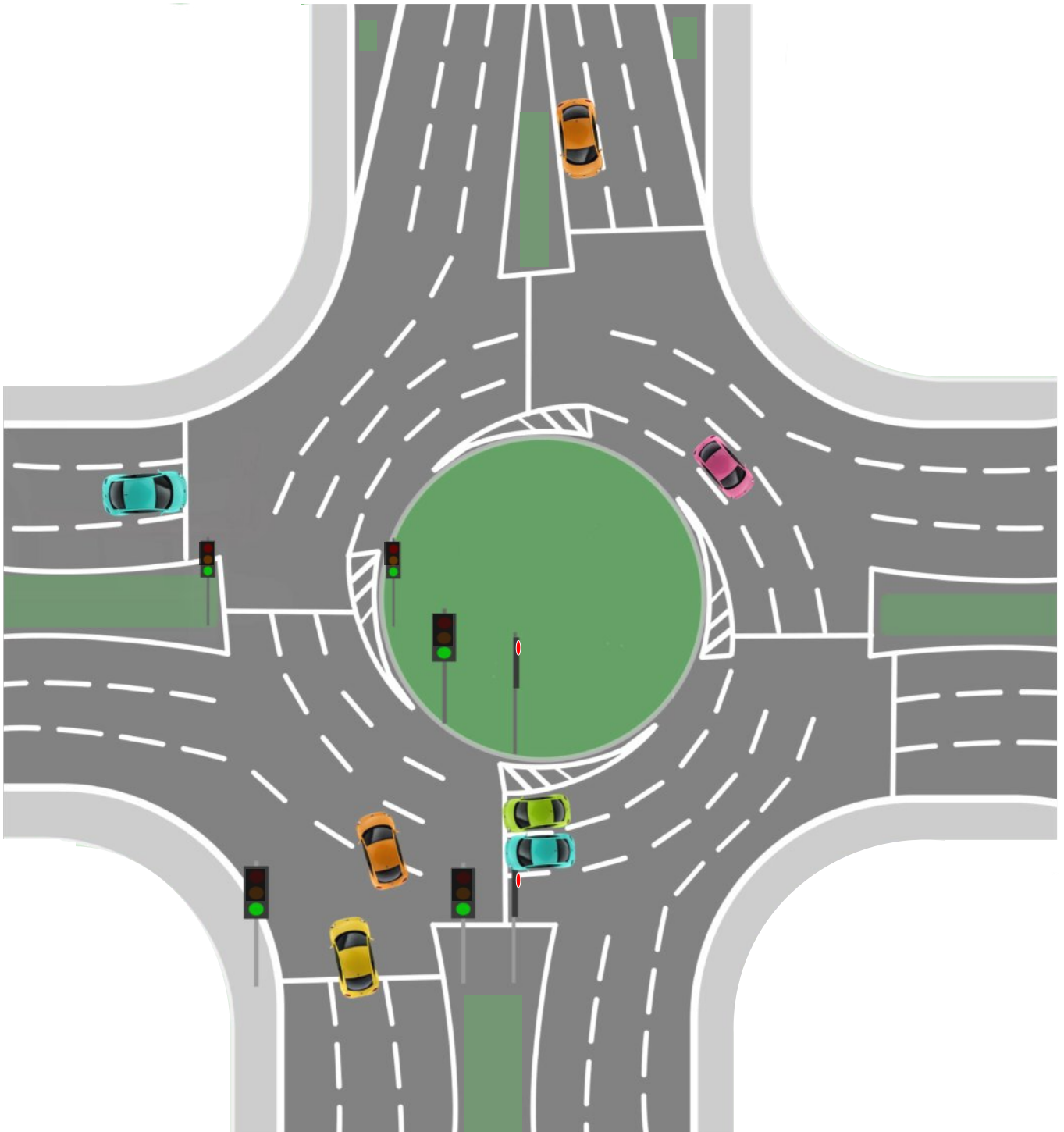
Roundabouts - Others



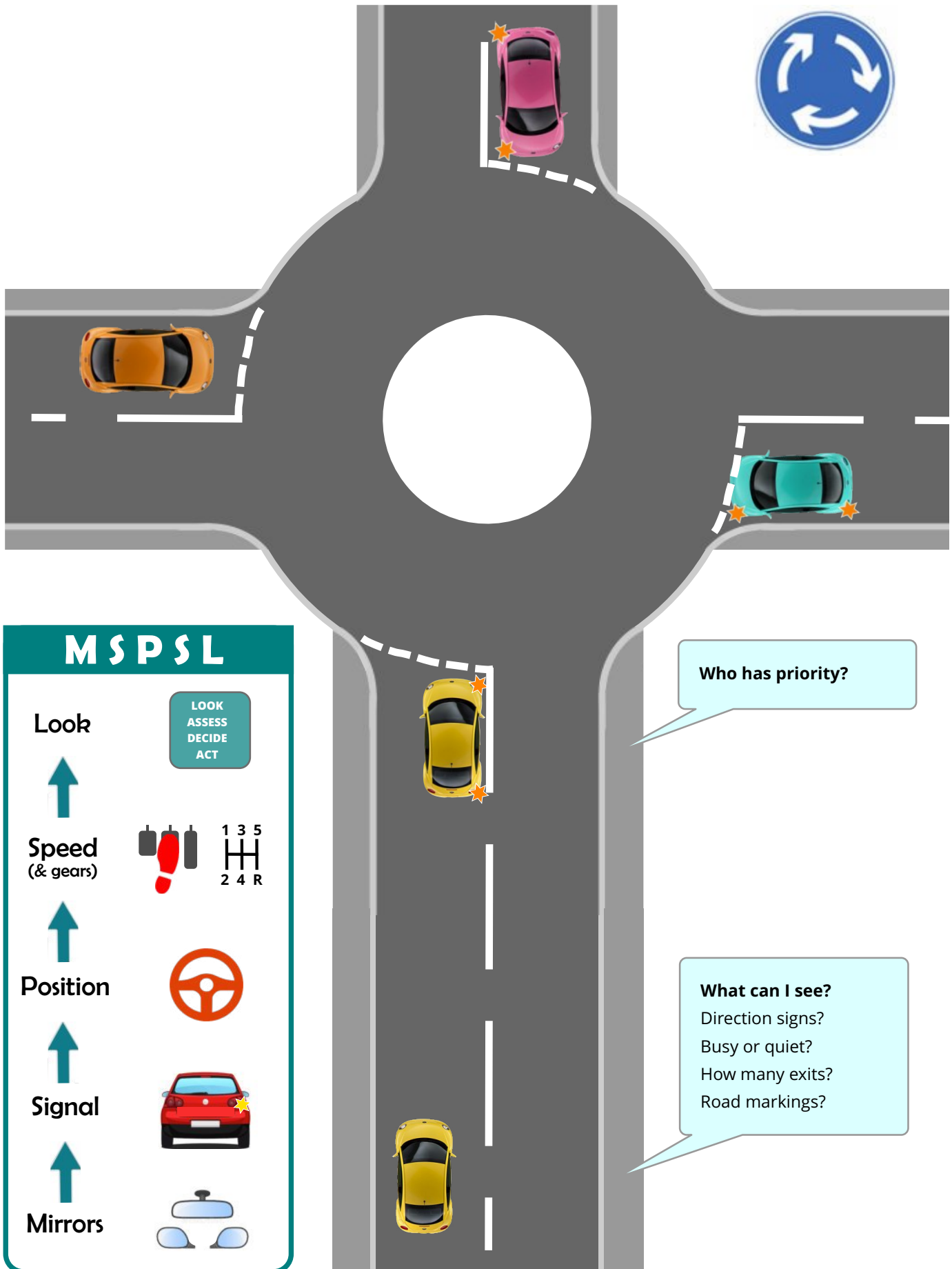
Spiral Roundabout



Roundabout Traffic Lights



Roundabouts - Mini

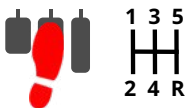


MSPSL

Look



Speed
(& gears)



LOOK
ASSESS
DECIDE
ACT

Position



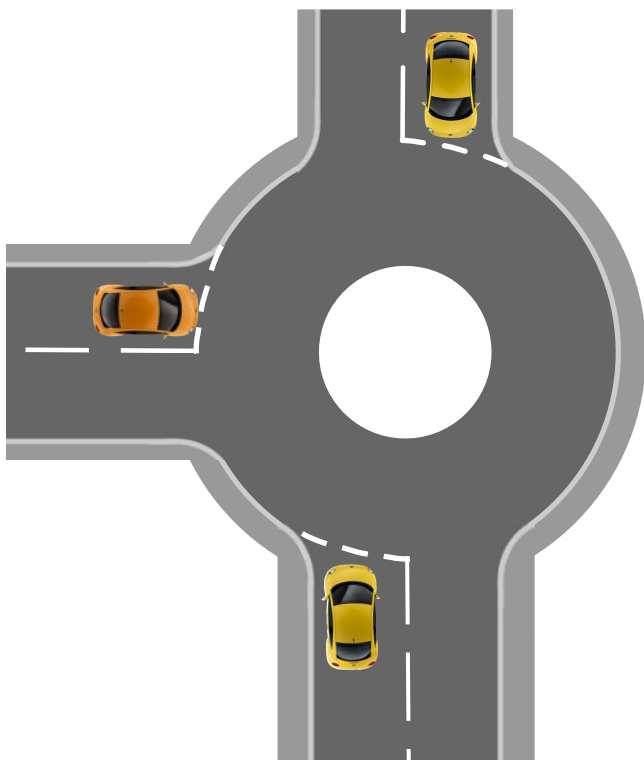
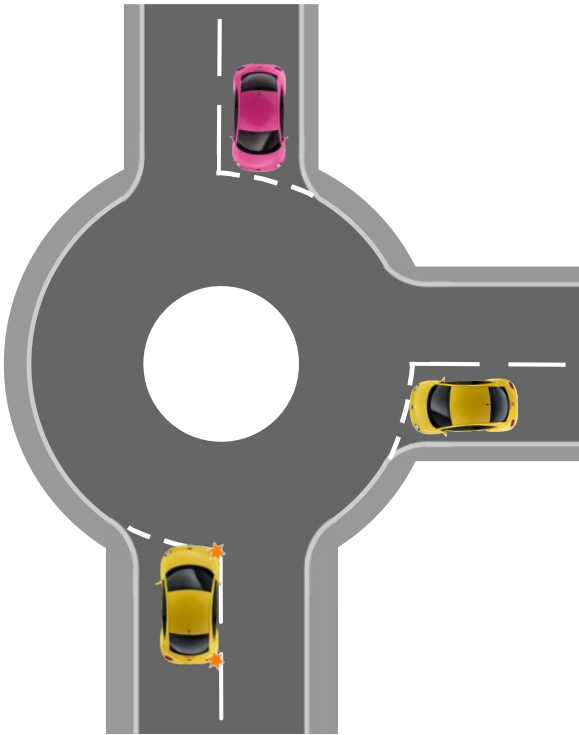
Signal



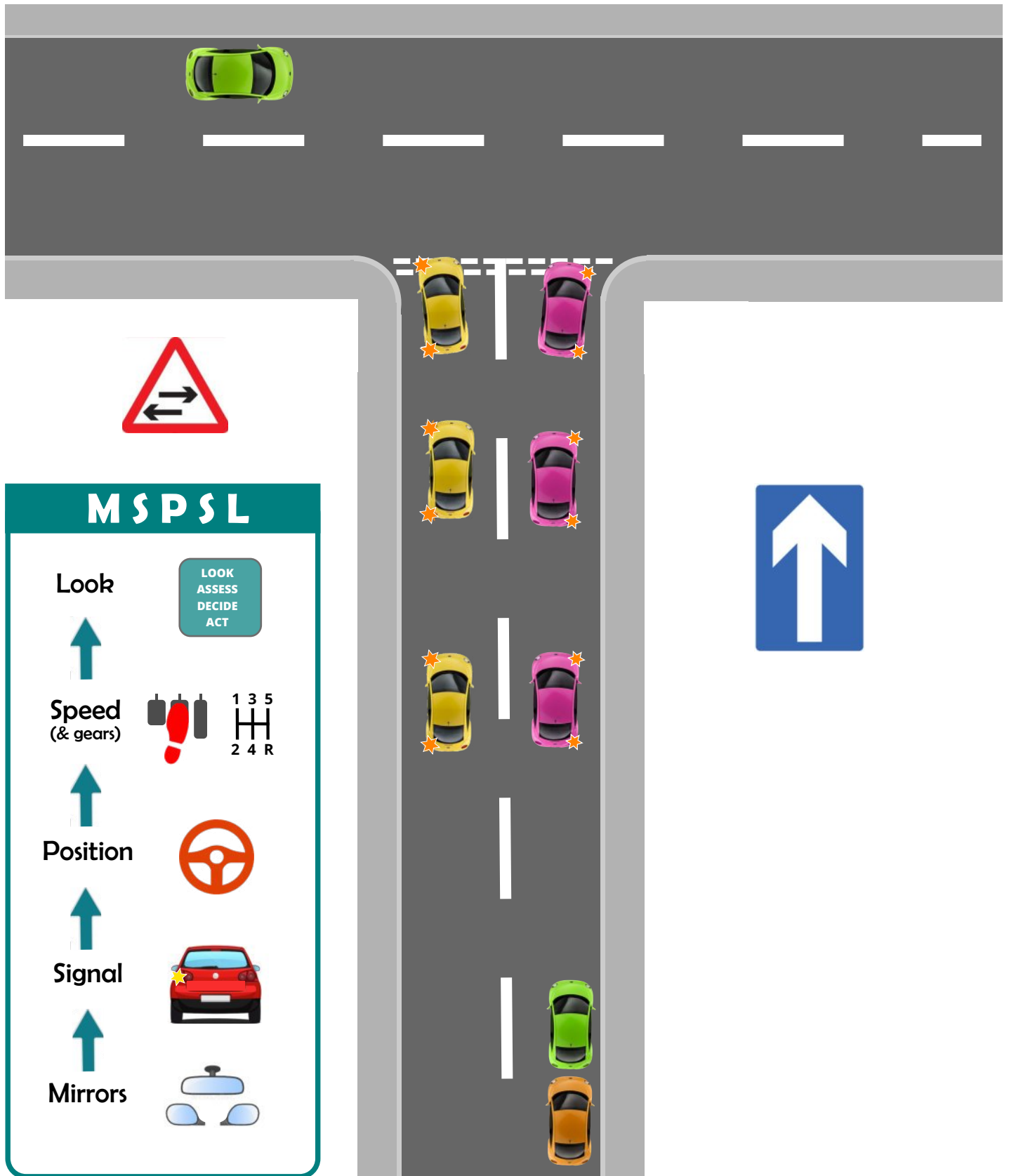
Mirrors



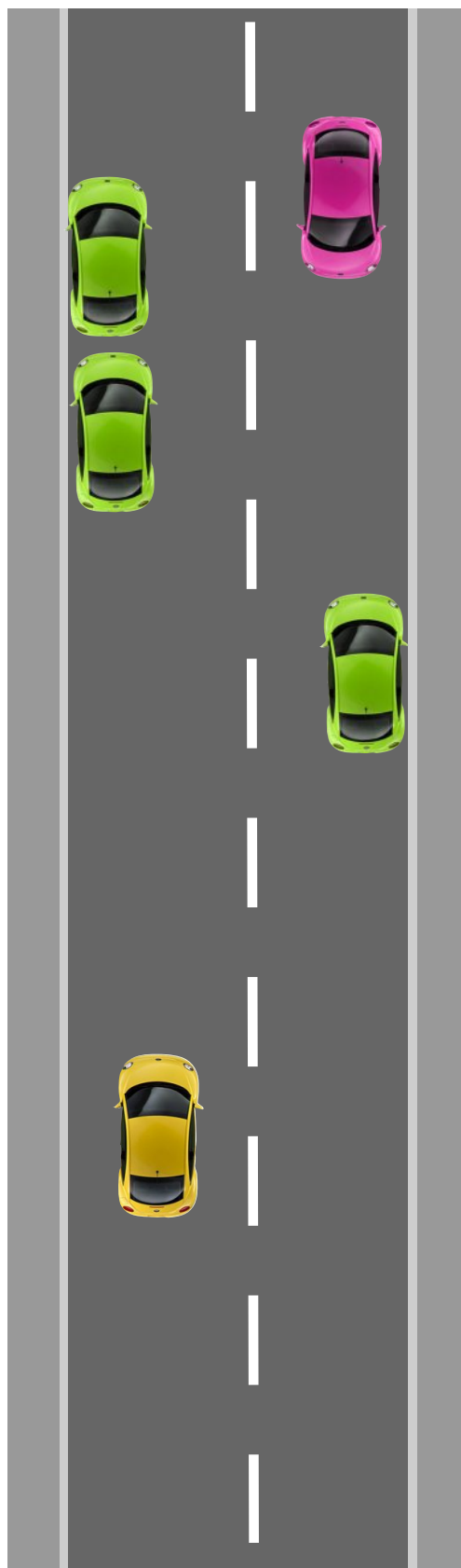
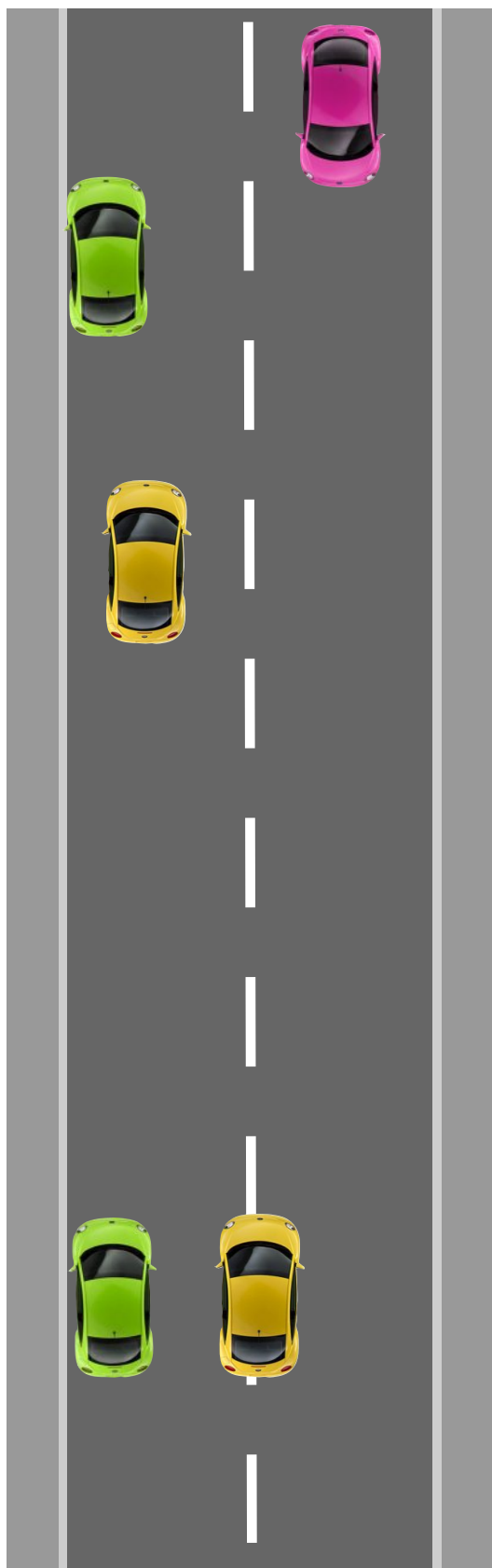
Mini Roundabouts - Others



One Way Streets



Meeting Traffic



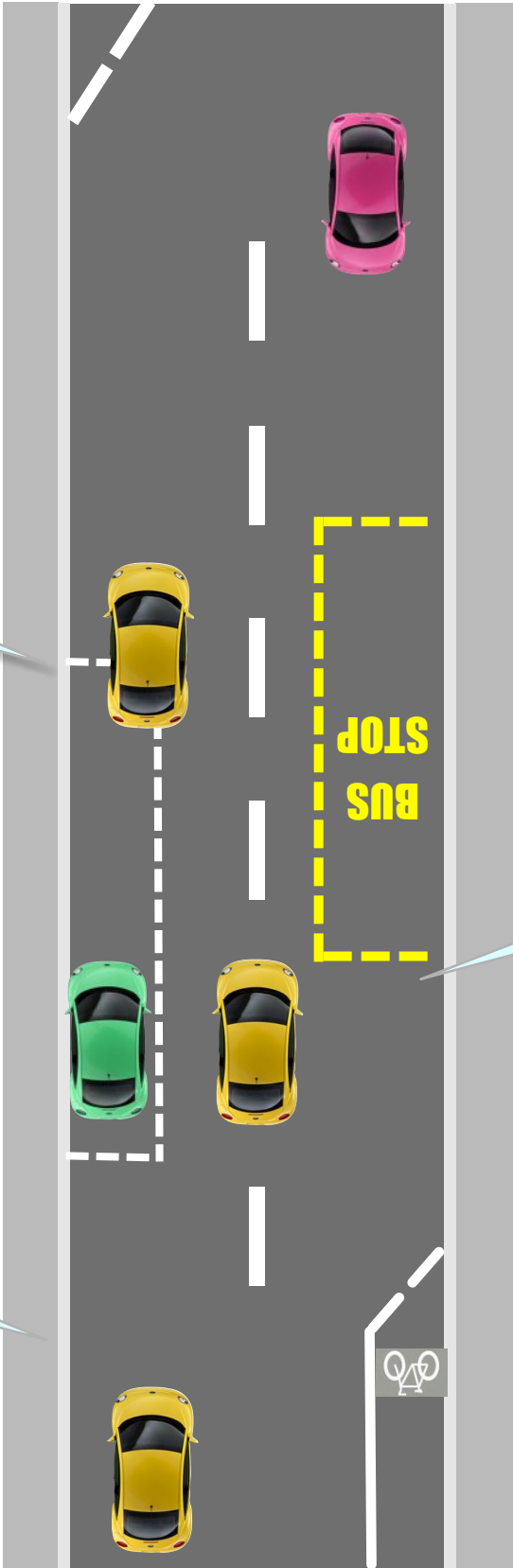
Positioning



How do road markings affect my position?

What is my normal driving position?

How far should I be from parked cars?



Overtaking



MSPSL

Look

↑

Speed
(& gears)

↑

Position



↑


Signal


↑


Mirrors

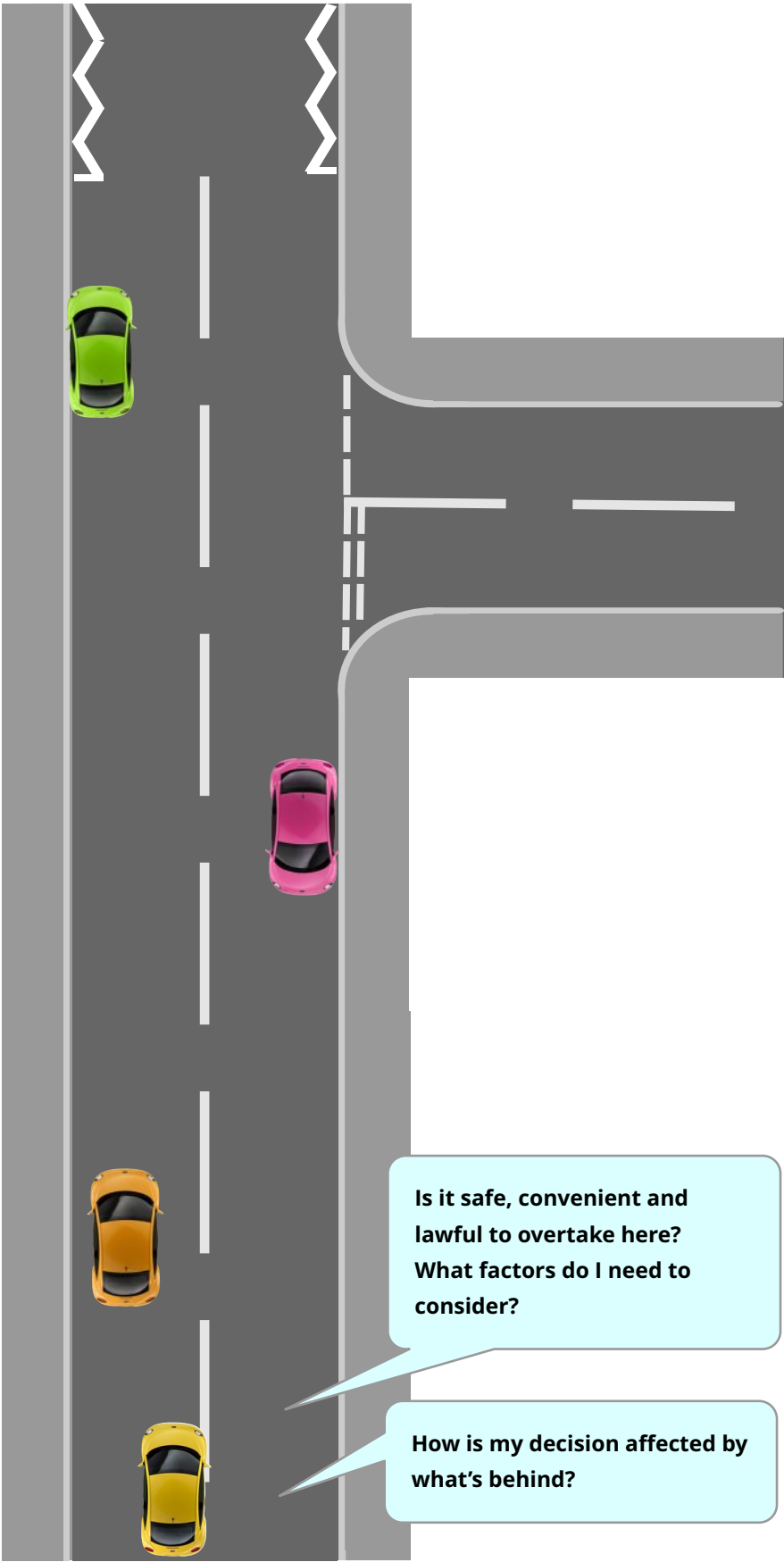
LOOK
ASSESS
DECIDE
ACT











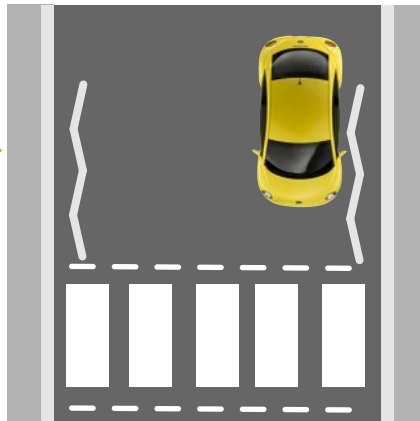
Is it safe, convenient and lawful to overtake here?
What factors do I need to consider?

How is my decision affected by what's behind?

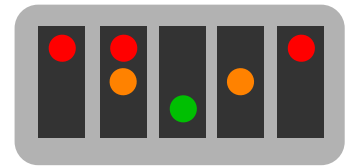
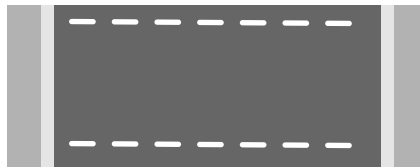
Pedestrian Crossings



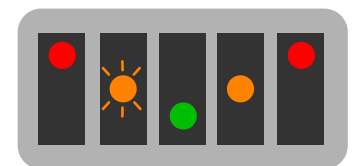
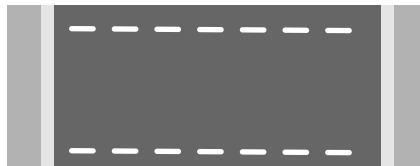
Zebra



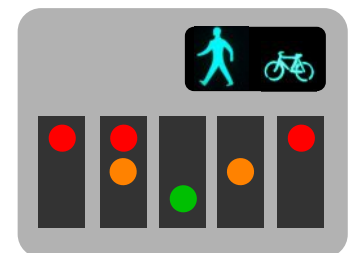
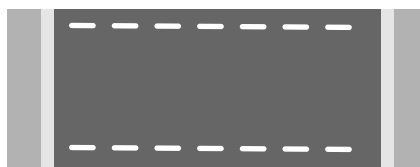
Puffin



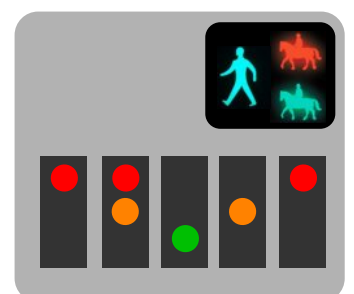
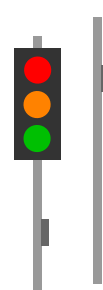
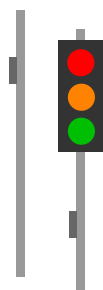
Pelican



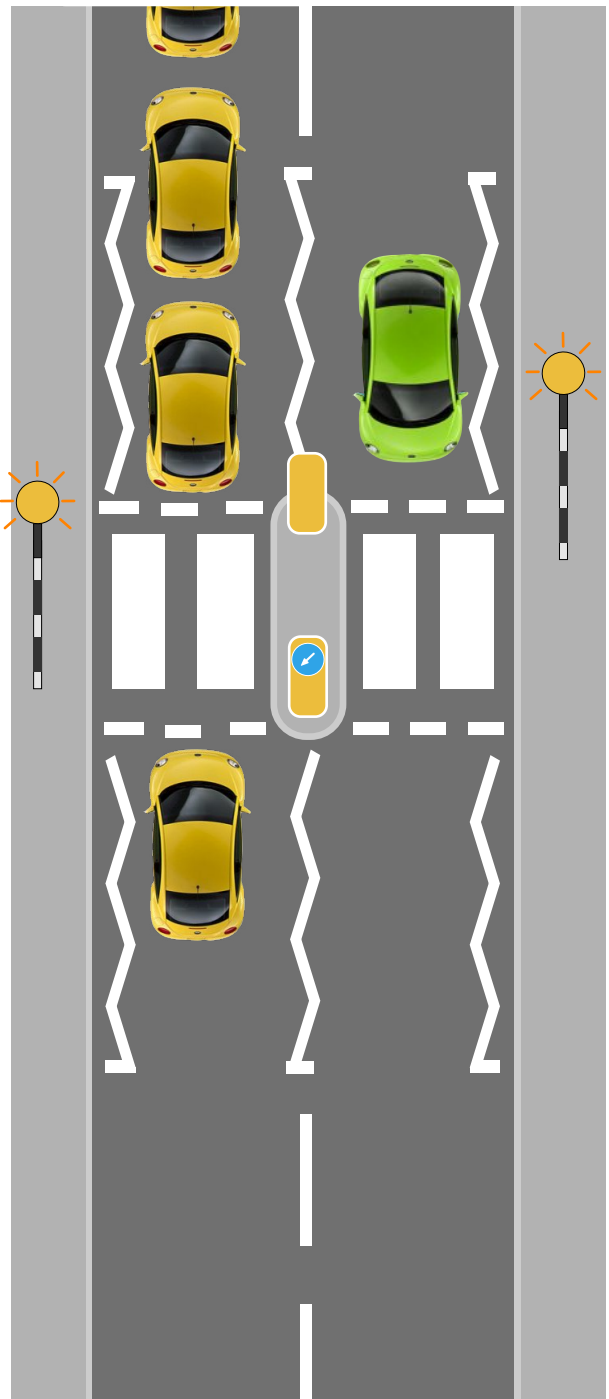
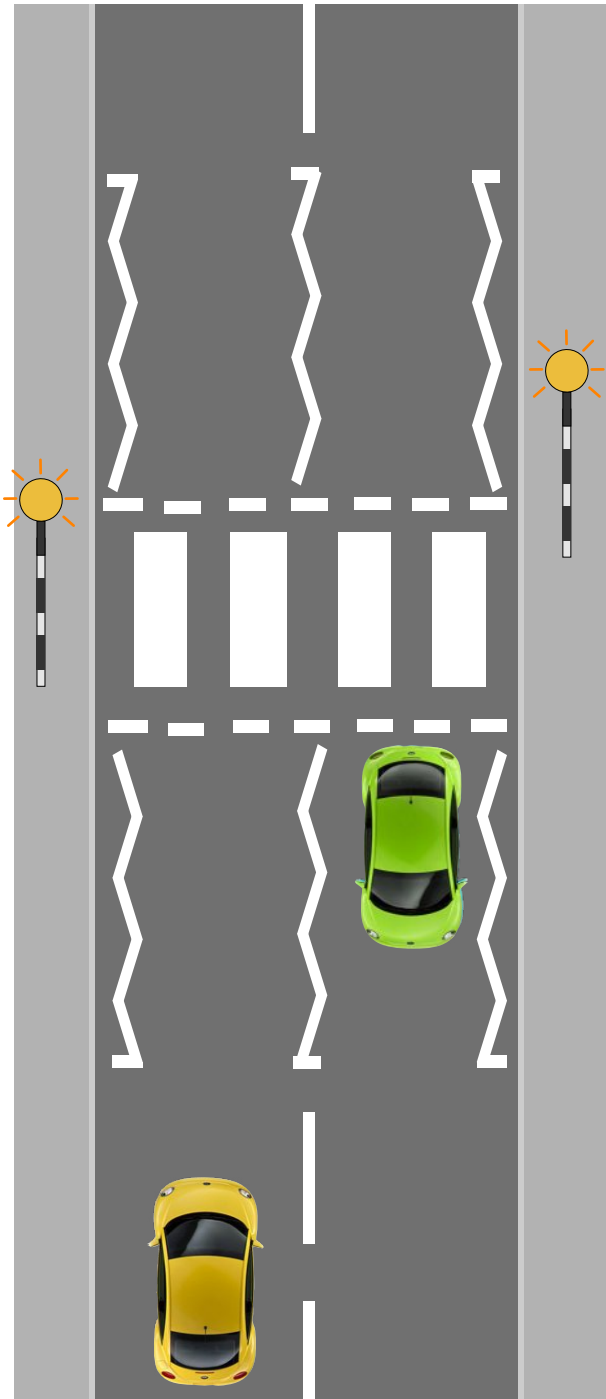
Toucan



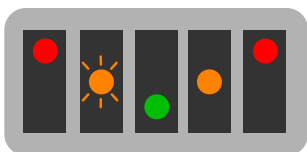
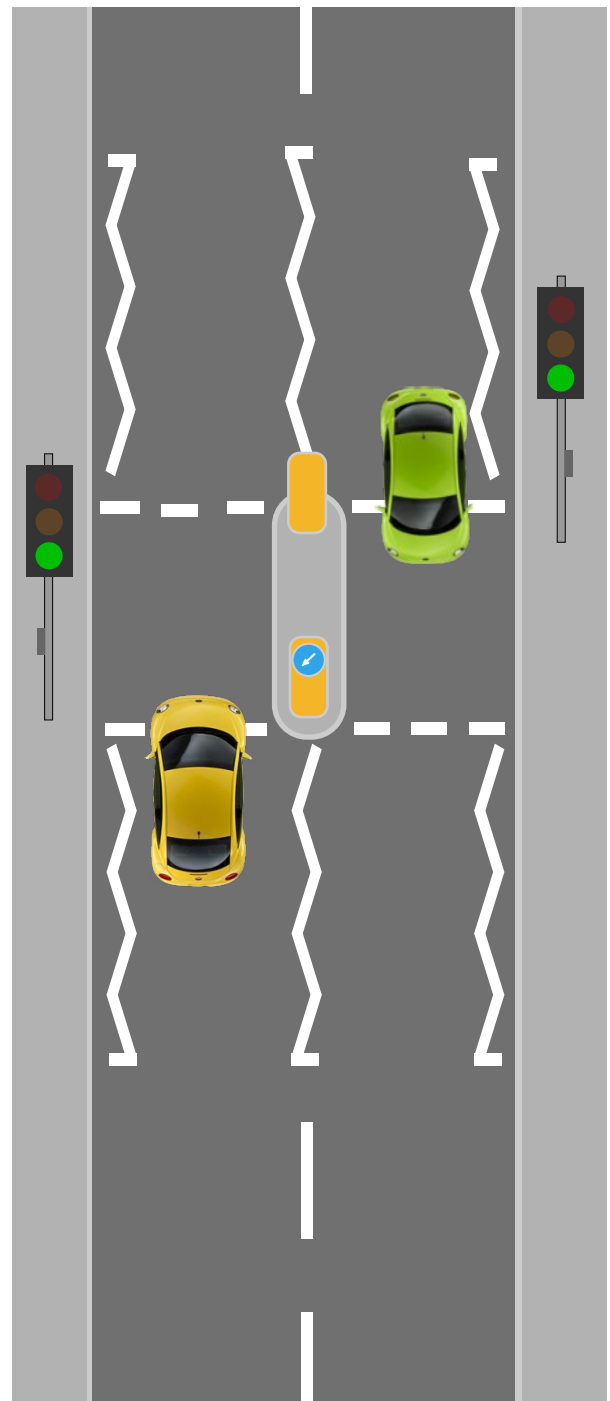
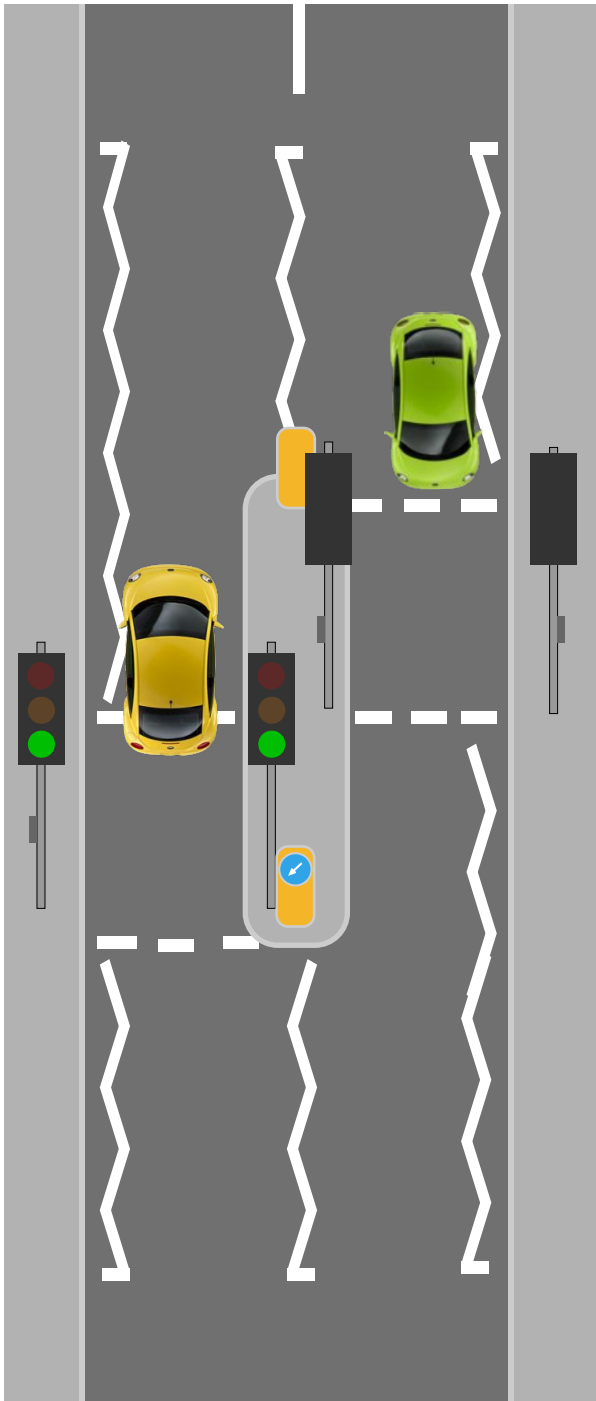
Pegasus/Equine



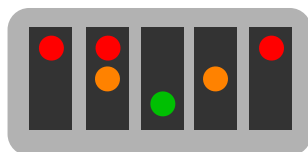
Zebra Crossings



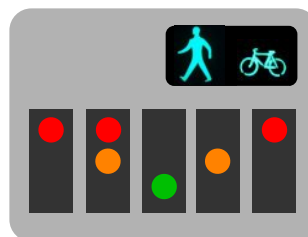
Light Controlled Crossings



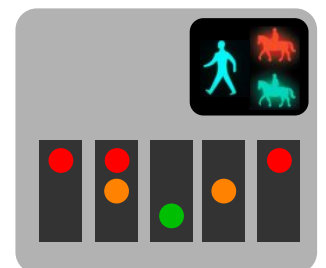
Pelican



Puffin

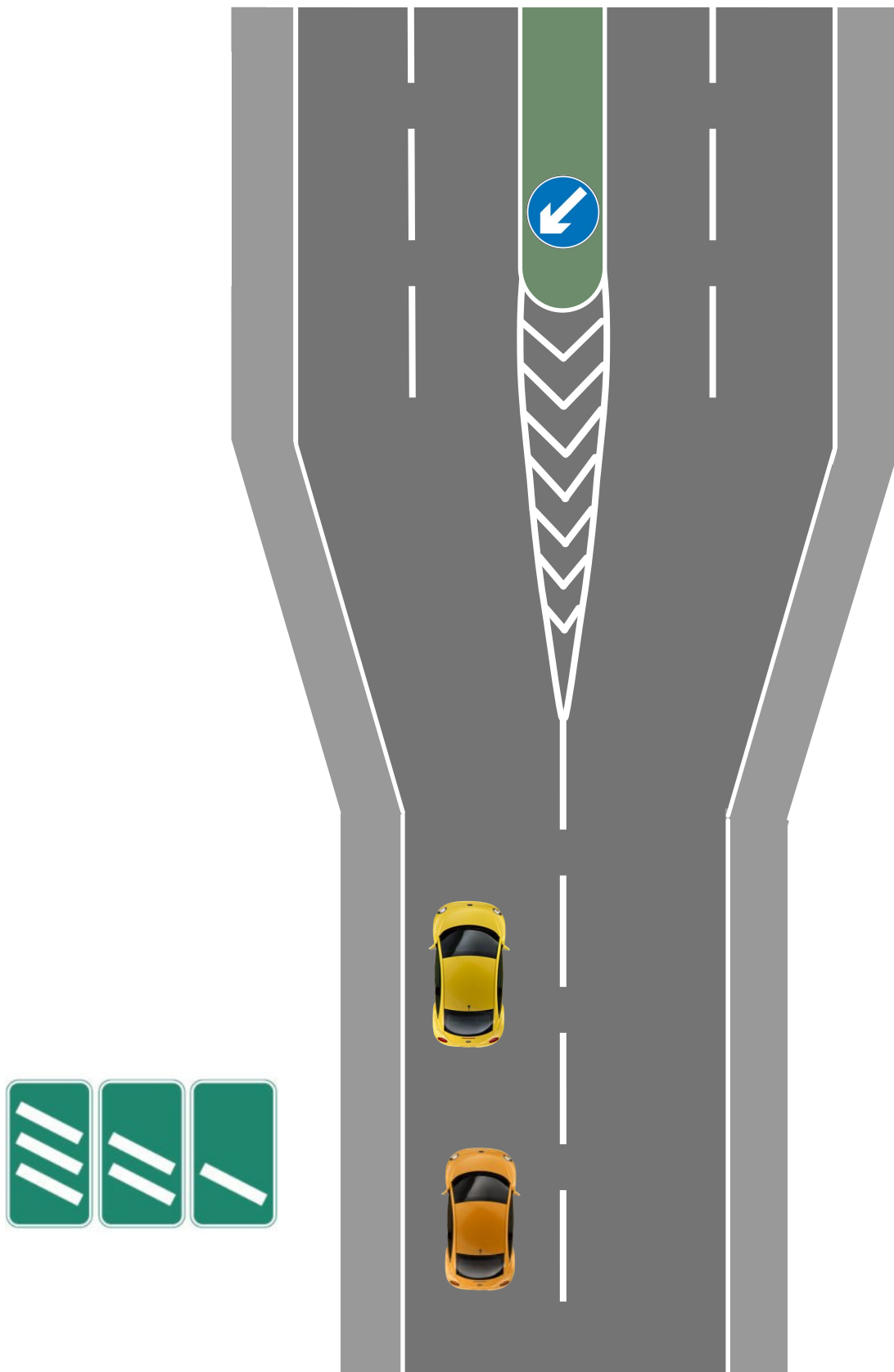


Toucan

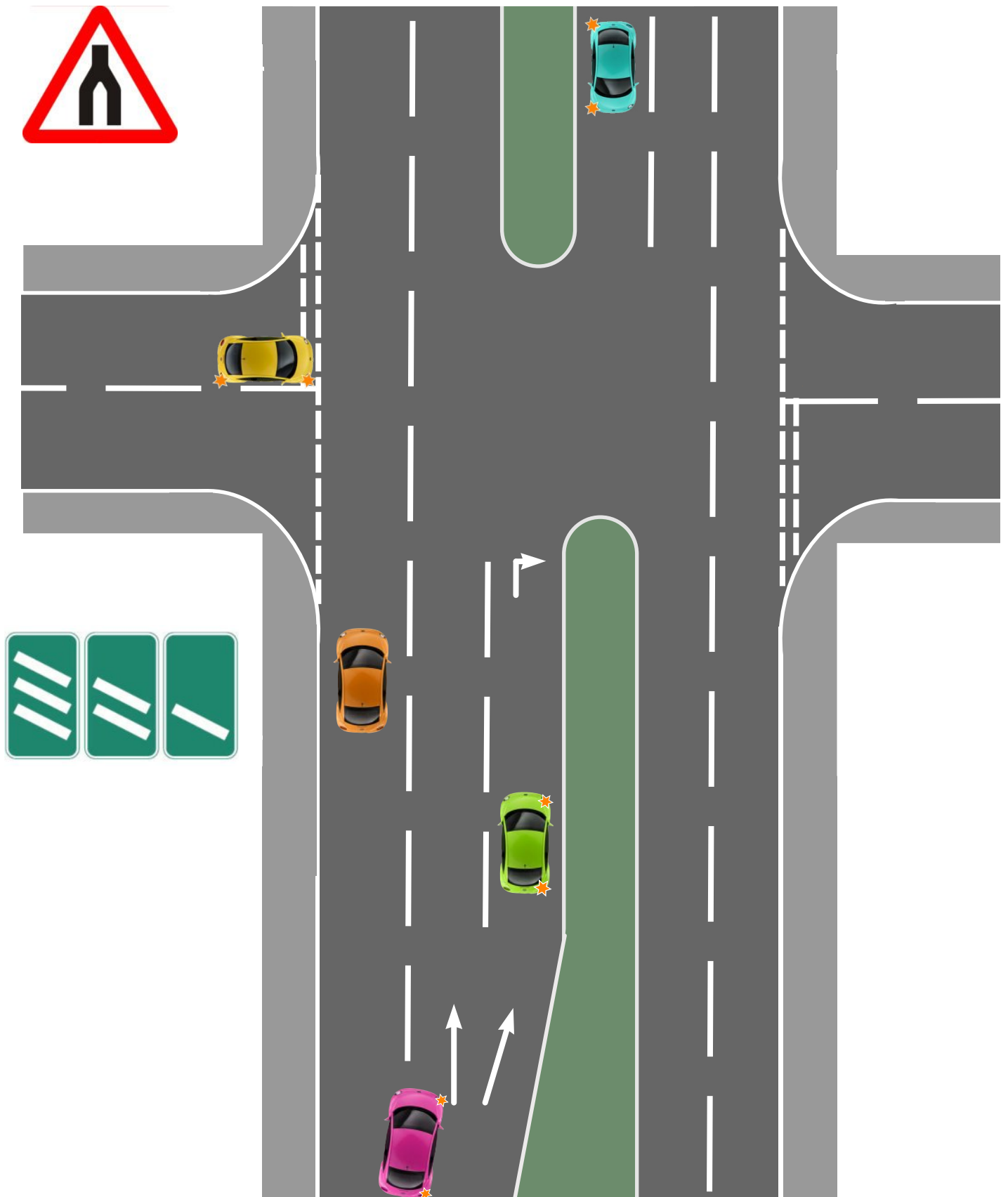


Pegasus/Equine

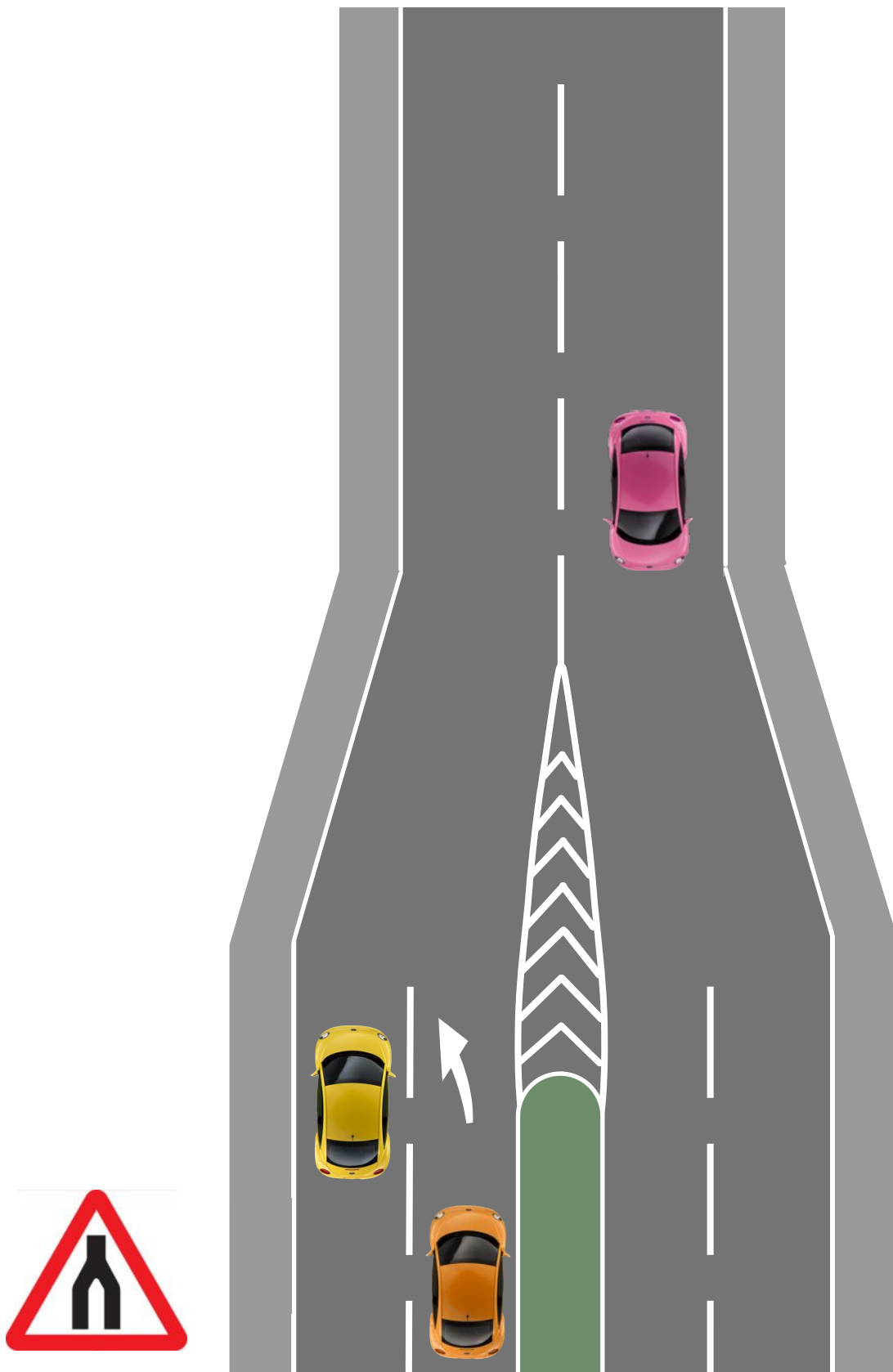
Dual Carriageways



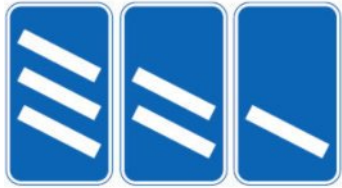
Dual Carriageways



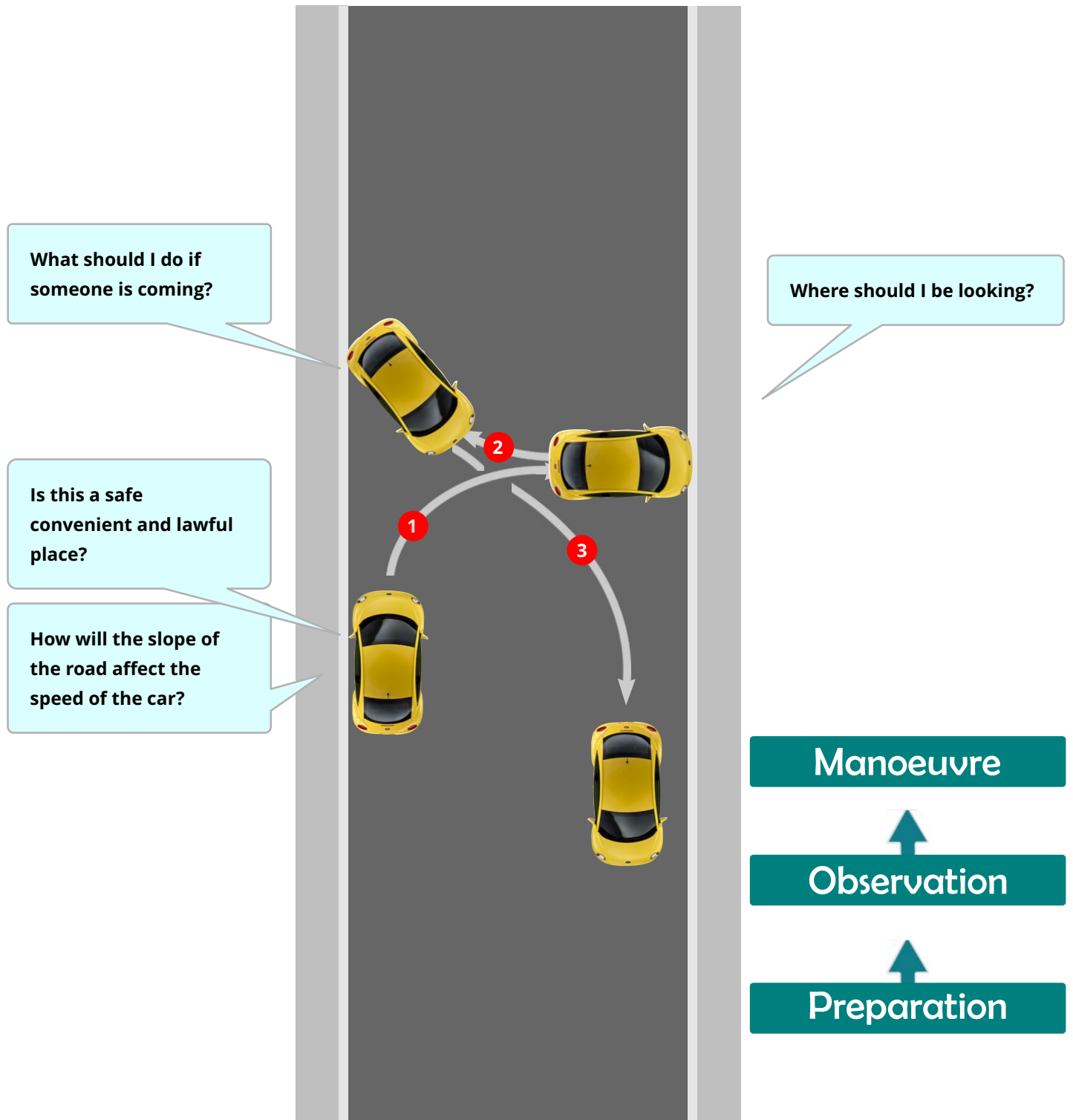
Dual Carriageways



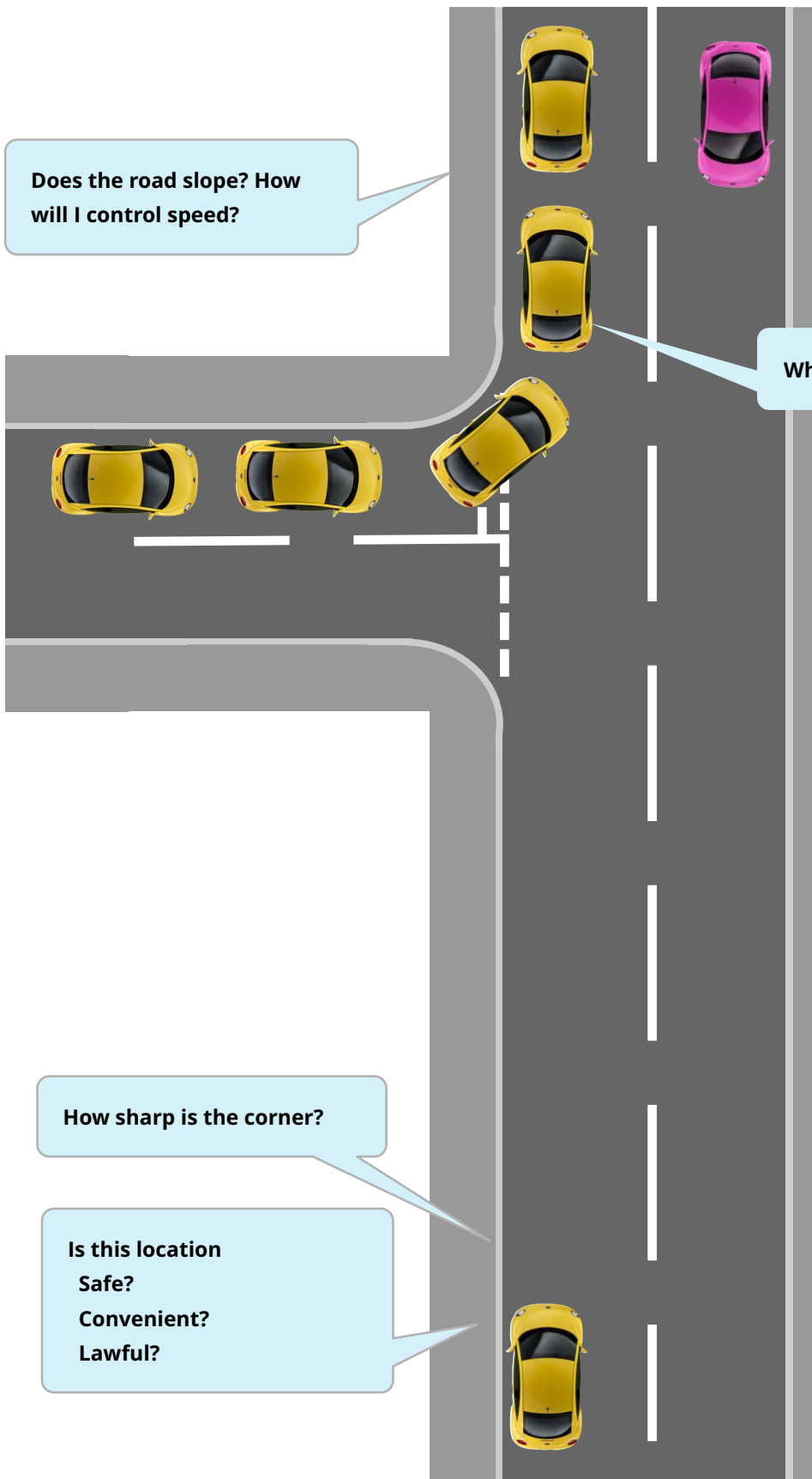
Motorways



Turn in the Road



Reverse Left



Preparation

Observation

Manoeuvre

M S P S L

Look

LOOK
ASSESS
DECIDE
ACT

Speed
(& gears)



Position



Signal

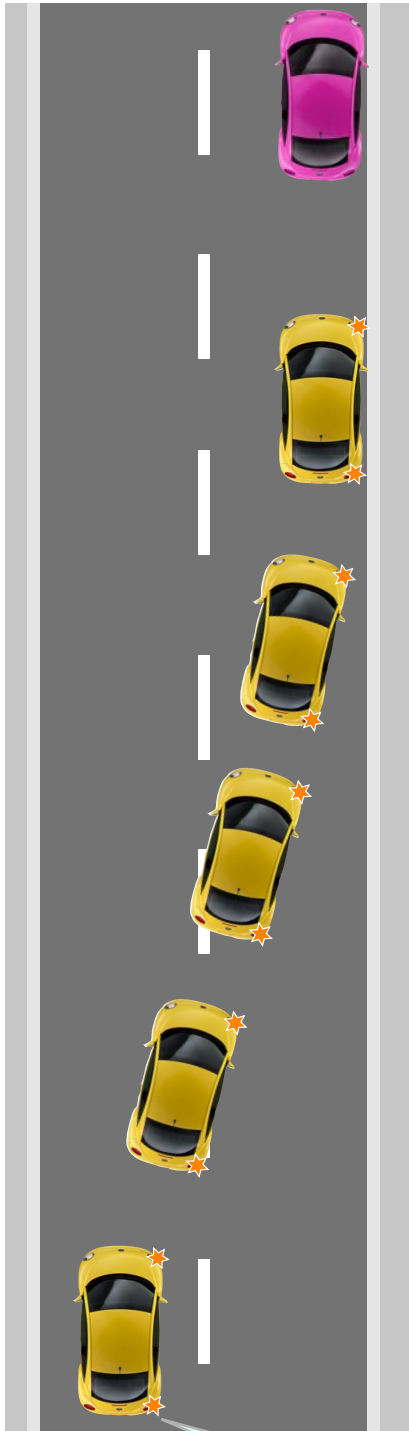


Mirrors



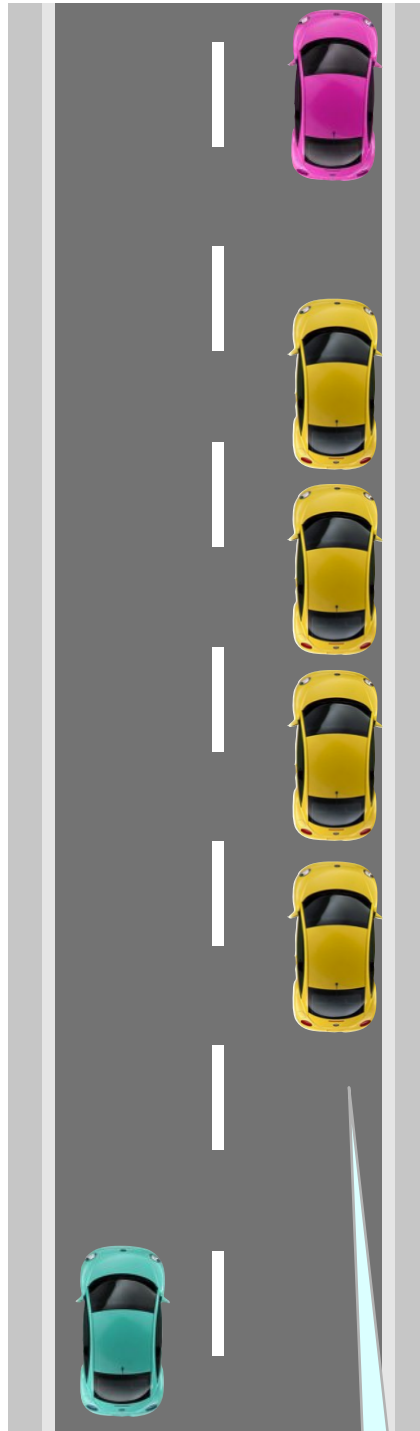
Pull up on Right & Reverse

Pull up on right



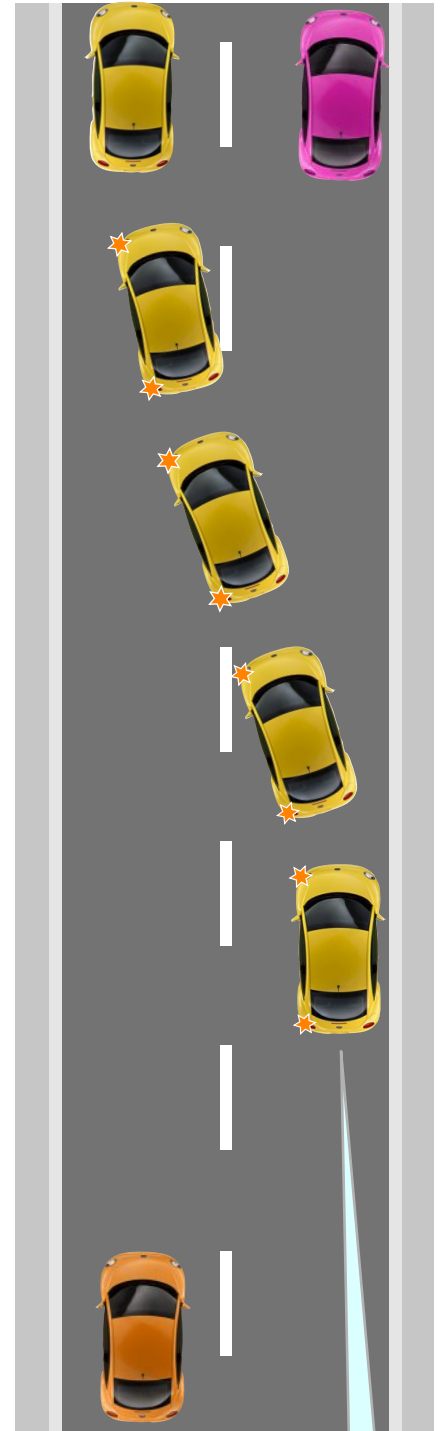
Where is a suitable place?
Is there oncoming traffic?
M-S-P-S-L

Reverse 2 car lengths



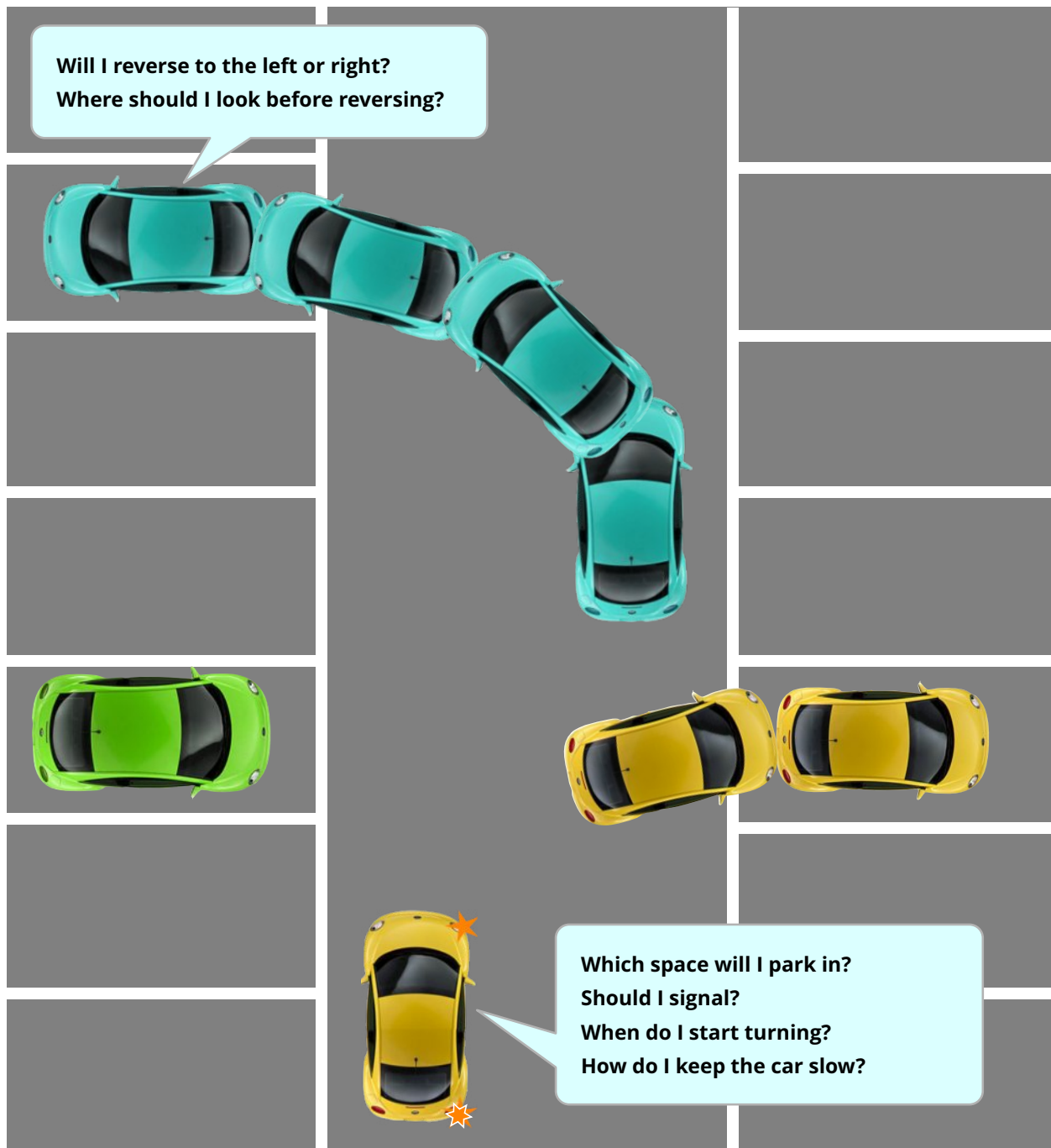
Where do I need to look?
How do I control my speed?
P-O-M

Pull away safely



Where should I look?
Is it safe?
P-O-M

Forward Bay Park



Mirrors

Signal

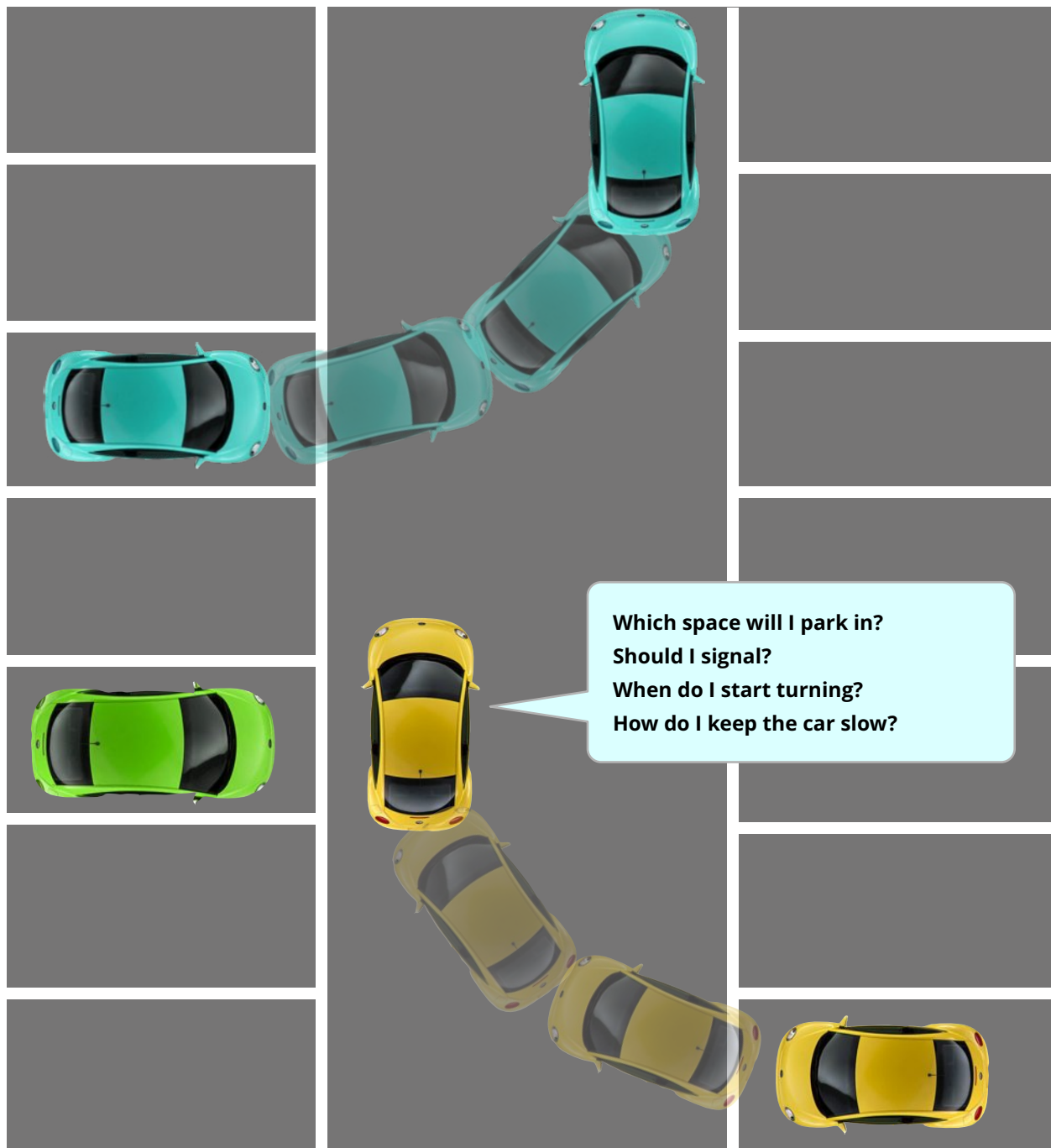
Position Speed Look

Preparation

Observation

Manoeuvre

Reverse Bay Park



Mirrors

Signal

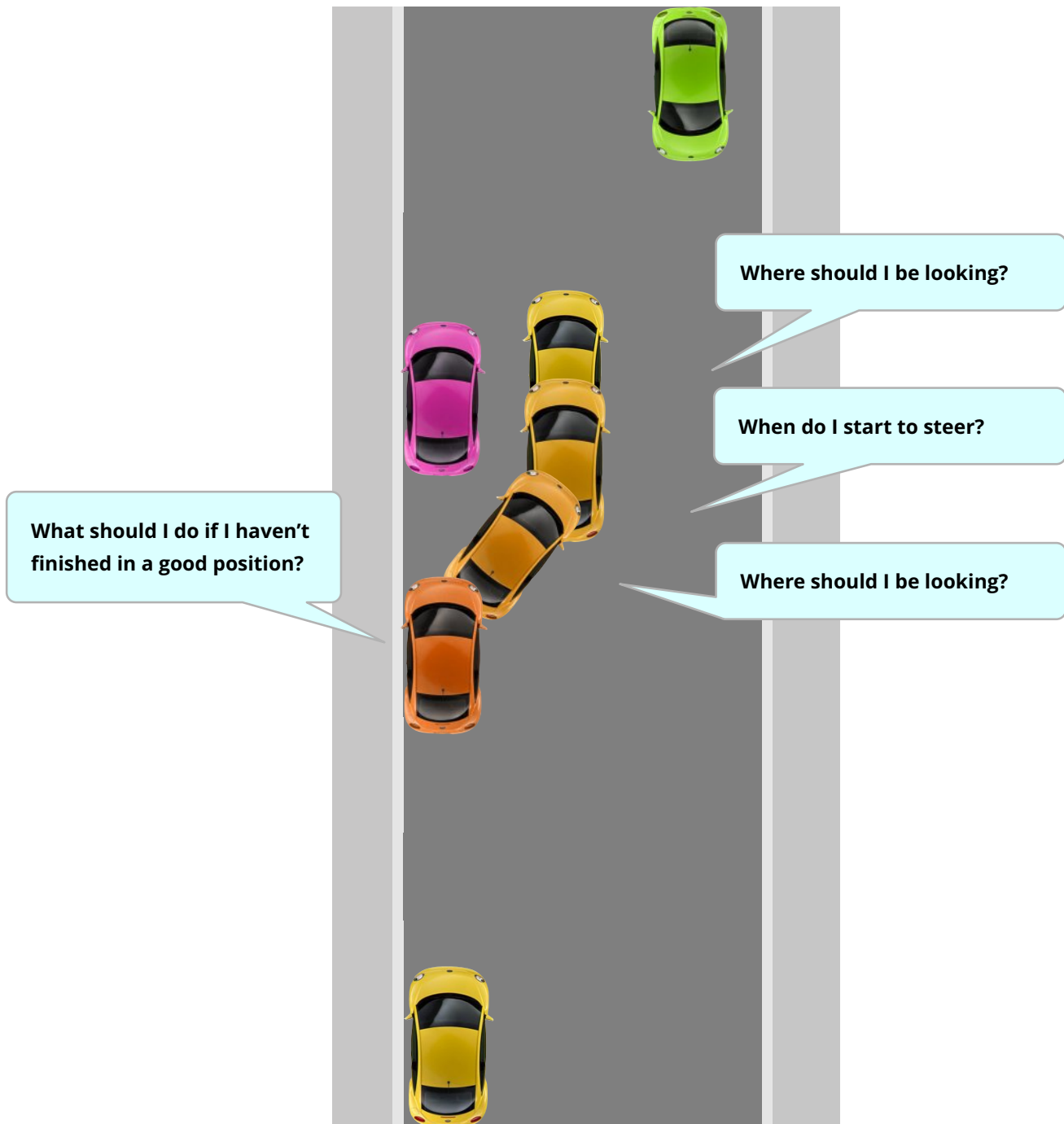
Position Speed Look

Preparation

Observation

Manoeuvre

Parallel Park



Mirrors

Signal

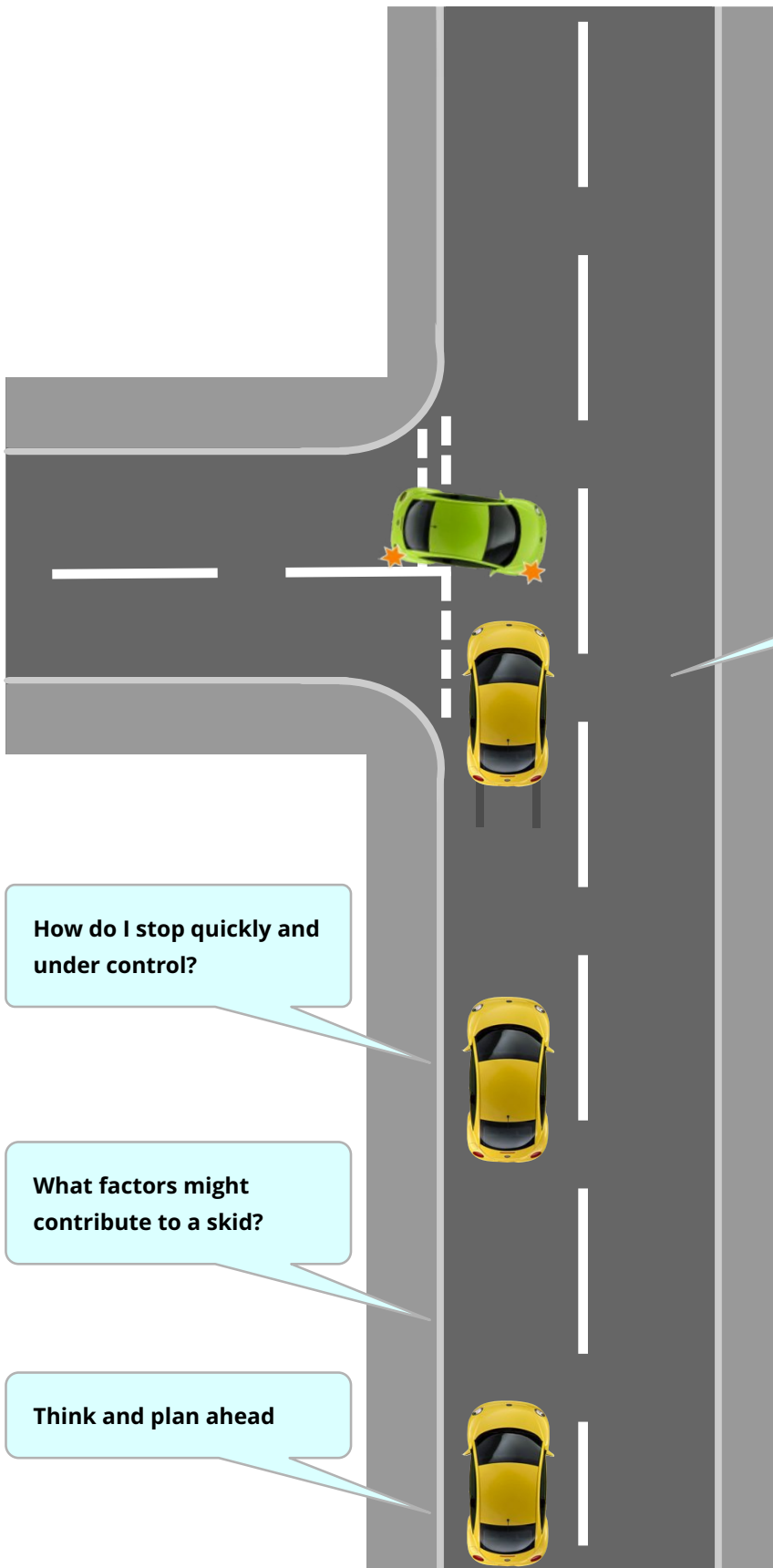
Position Speed Look

Preparation

Observation

Manoeuvre

Emergency Stop



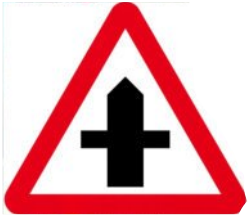
What do I do if I skid?

How do I stop quickly and under control?

What factors might contribute to a skid?

Think and plan ahead

Road Signs and Road Markings



Warning



Orders - Must Not



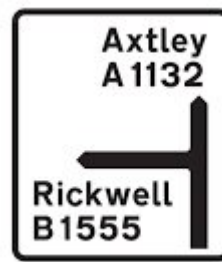
Orders - Must



Road Works



Primary Routes



Local and non-Primary Routes

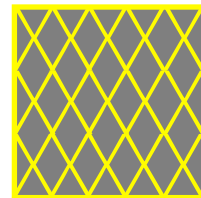


Motorways

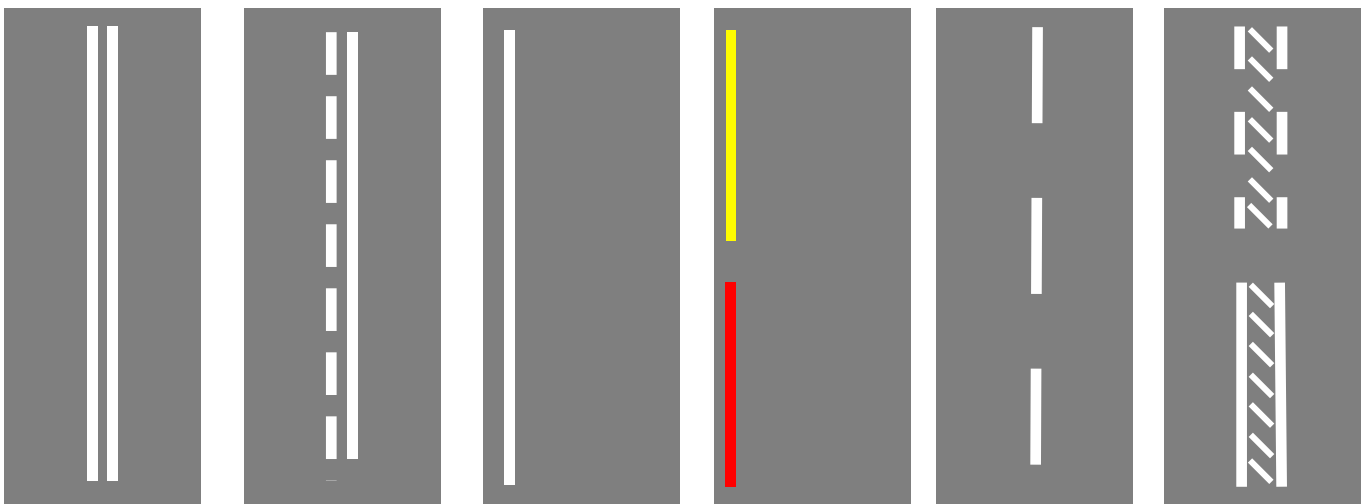


Stop

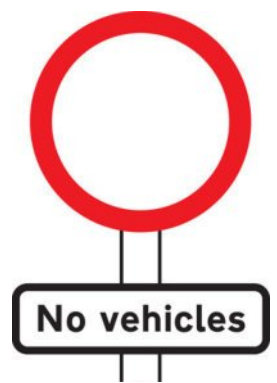
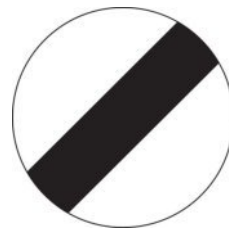
Give Way

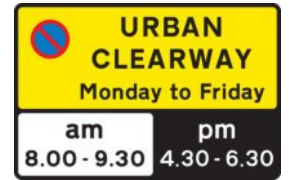


Box Junction



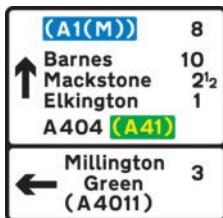
Road & Traffic Signs

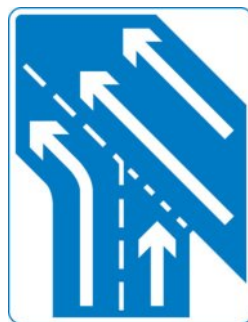
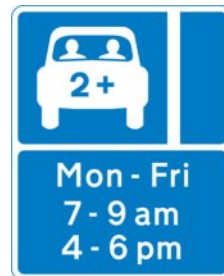
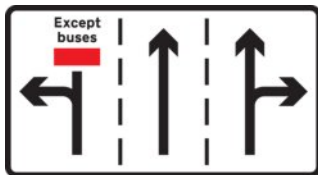
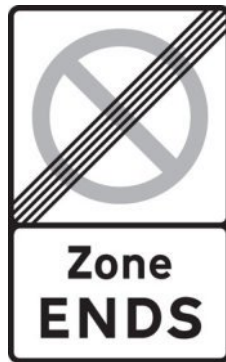






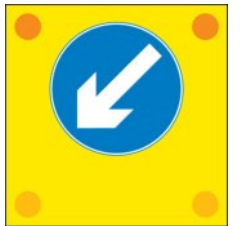




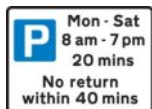
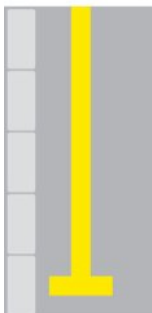
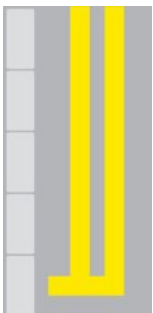
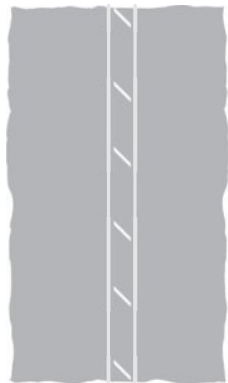
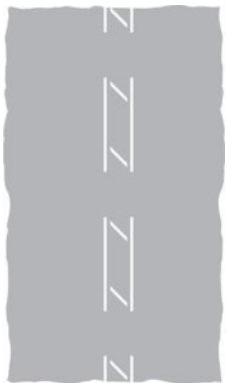


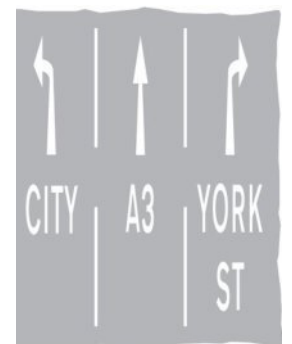
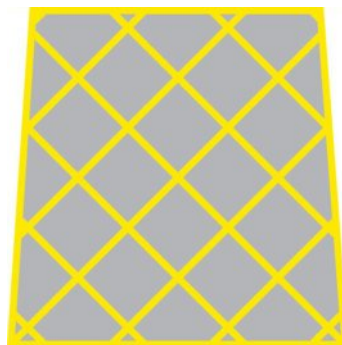
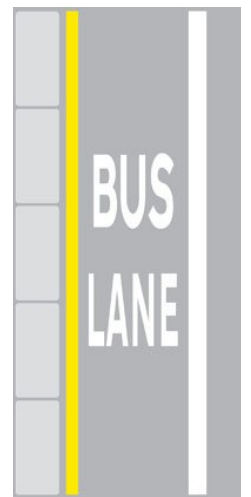
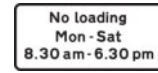
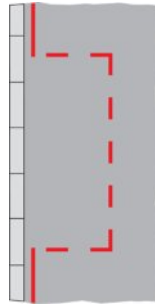
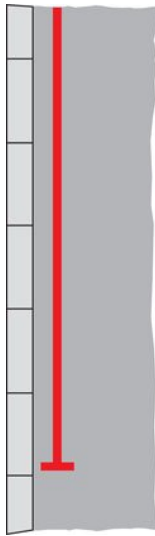
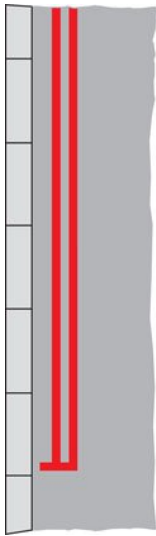


Priority over
oncoming
vehicles



Road Markings





Tell Me Questions

- 1. Tell me how you'd check that the brakes are working before starting a journey.** Brakes should not feel spongy or slack. Brakes should be tested as you set off. Vehicle should not pull to one side.
- 2. Tell me where you'd find the information for the recommended tyre pressures for this car and how tyre pressures should be checked.** Manufacturer's guide, use a reliable pressure gauge, check and adjust pressures when tyres are cold, don't forget spare tyre, remember to refit valve caps.
- 3. Tell me how you make sure your head restraint is correctly adjusted so it provides the best protection in the event of a crash.** The head restraint should be adjusted so the rigid part of the head restraint is at least as high as the eye or top of the ears, and as close to the back of the head as is comfortable. Note: Some restraints might not be adjustable.
- 4. Tell me how you'd check the tyres to ensure that they have sufficient tread depth and that their general condition is safe to use on the road.** No cuts and bulges, 1.6mm of tread depth across the central three-quarters of the breadth of the tyre, and around the entire outer circumference of the tyre.
- 5. Tell me how you'd check that the headlights and tail lights are working. You don't need to exit the vehicle.** Explain you'd operate the switch (turn on ignition if necessary), then walk round vehicle (as this is a 'tell me' question, you don't need to physically check the lights).
- 6. Tell me how you'd know if there was a problem with your anti-lock braking system.** Warning light should illuminate if there is a fault with the anti-lock braking system.
- 7. Tell me how you'd check the direction indicators are working. You don't need to exit the vehicle.** Explain you'd operate the switch (turn on ignition if necessary), and then walk round vehicle (as this is a 'tell me' question, you don't need to physically check the lights).
- 8. Tell me how you'd check the brake lights are working on this car.** Explain you'd operate the brake pedal, make use of reflections in windows or doors, or ask someone to help.
- 9. Tell me how you'd check the power-assisted steering is working before starting a journey.** If the steering becomes heavy, the system may not be working properly. Before starting a journey, 2 simple checks can be made.
Gentle pressure on the steering wheel, maintained while the engine is started, should result in a slight but noticeable movement as the system begins to operate. Alternatively turning the steering wheel just after moving off will give an immediate indication that the power assistance is functioning.
- 10. Tell me how you'd switch on the rear fog light(s) and explain when you'd use it/them. You don't need to exit the vehicle.** Operate switch (turn on dipped headlights and ignition if necessary). Check warning light is on. Explain use.
- 11. Tell me how you switch your headlight from dipped to main beam and explain how you'd know the main beam is on.** Operate switch (with ignition or engine on if necessary), check with main beam warning light.

Tell Me Questions (under bonnet)

12. Open the bonnet and tell me how you'd check that the engine has sufficient oil.

Identify dipstick/oil level indicator, describe check of oil level against the minimum and maximum markers.

13. Open the bonnet and tell me how you'd check that the engine has sufficient engine coolant.

Identify high and low level markings on header tank where fitted or radiator filler cap, and describe how to top up to correct level.

14. Open the bonnet and tell me how you'd check that you have a safe level of hydraulic brake fluid.

Identify reservoir, check level against high and low markings.

Show Me Questions

When it's safe to do so, can you show me how you wash and clean the rear windscreen?

When it's safe to do so, can you show me how you wash and clean the front windscreen?

When it's safe to do so, can you show me how you'd switch on your dipped headlights?

When it's safe to do so, can you show me how you'd set the rear demister?

When it's safe to do so, can you show me how you'd operate the horn?

When it's safe to do so, can you show me how you'd demist the front windscreen?

When it's safe to do so, can you show me how you'd open and close the side window?

Name

Licence no.

Date

Time

Signature

☐

Eyesight test

Manoeuvres

☐

Reverse / Right

☐

Reverse park (road)

☐

Reverse park (car park)

☐

Forward park

Control

(S)

(D)

Observation

(S)

(D)

☐

Show me / Tell me

Show me / Tell me

(S)

(D)

☐

Controlled stop

Controlled stop

(S)

(D)

Control

Accelerator

(S)

(D)

Clutch

(S)

(D)

Gears

(S)

(D)

Footbrake

(S)

(D)

Parking brake

(S)

(D)

Steering

(S)

(D)

Precautions

(S)

(D)

Ancillary Controls

(S)

(D)

Move off

Safety

(S)

(D)

Control

(S)

(D)

Use of Mirrors

Signalling

(S)

(D)

Change direction

(S)

(D)

Change speed

(S)

(D)

Signals

Necessary

(S)

(D)

Correctly

(S)

(D)

Timed

(S)

(D)

Junctions

Approach speed

(S)

(D)

Observation

(S)

(D)

Turning right

(S)

(D)

Turning left

(S)

(D)

Cutting corners

(S)

(D)

Judgement

Overtaking

(S)

(D)

Meeting

(S)

(D)

Crossing

(S)

(D)

Positioning

Normal driving

(S)

(D)

Lane discipline

(S)

(D)

Pedestrian crossings

(S)

(D)

Position/ normal stop

(S)

(D)

Awareness planning

(S)

(D)

Clearance

(S)

(D)

Following distance

(S)

(D)

Use of speed

(S)

(D)

Progress

Appropriate speed

(S)

(D)

Undue hesitation

(S)

(D)

Response to signs / signals

Traffic signs

(S)

(D)

Road markings

(S)

(D)

Traffic lights

(S)

(D)

Traffic controllers

(S)

(D)

Other road users

(S)

(D)

Total faults

Pass

☐

Fail

☐☐

ETA

Physical

☐

Verbal

☐☐

ECO

Control

☐

Planning

☐