

# Driving Lesson Diagrams



**Take care of your diagrams and they will offer you long standing service. If you use dry wipe markers on the diagrams you are recommended to wipe clean immediately after use to avoid unsightly residues!**

**Our lesson plan diagrams are copyright. You may photocopy them for the private use of your own pupils but they may not be copied for use by other instructors and may not be published online in any format. Many thanks for your co-operation in this! Road signs and show me tell me questions are published using public sector information licensed under the Open Government Licence v3.0.**

**As well as driving lesson diagrams we offer reflective logs and other ADI stationery.**

**We also design driving school websites and have a comprehensive list of dual control suppliers, contact details for driving school insurance and a wealth of information about driving school marketing.**

**Please visit [adininja.com](http://adininja.com) for all your requirements.**



# CONTENTS

1. Cockpit checks
2. Clutch
3. Moving off
4. Pull up on the left (stopping)
5. Angled start
6. Emerging left
7. Emerging right
8. Turning left
9. Turning right
10. Other junctions
11. Crossroads
12. Other crossroads
13. Traffic lights (offside to offside)
14. Traffic lights (nearside to nearside)
15. Roundabouts turning left
16. Roundabouts turning ahead
17. Roundabouts right
18. Roundabouts other
19. Spiral Roundabouts
20. Spiral Roundabouts with traffic lights
21. Mini roundabouts
22. Mini roundabouts other
23. One way streets
24. Meeting traffic
25. Positioning
26. Overtaking
27. Pedestrian crossings
28. Zebra crossings
29. Light controlled crossings
30. Dual carriageways
31. Motorways
32. Turn in the road
33. Reversing left
34. Pull up on right & reverse
35. Forward bay park
36. Reverse bay park
37. Parallel park
38. Emergency Stop

Road signs and markings

Tell me questions

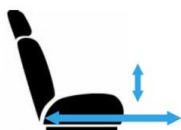
Show me questions

## Cockpit Checks

Doors



Seat Base



Seat Back/Steering Wheel



Seat Belts

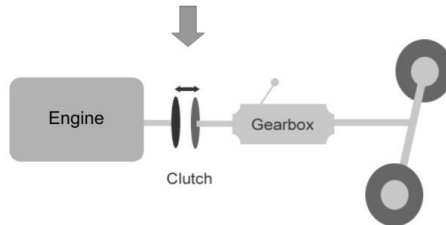


Mirrors

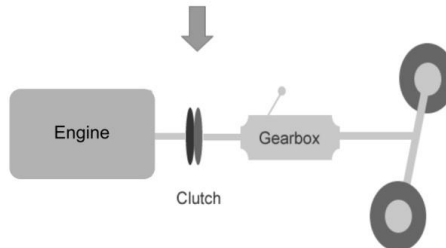


# Clutch

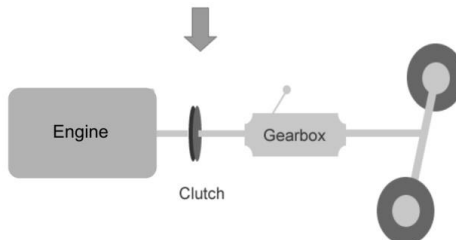
Clutch pedal down = plates pushed apart



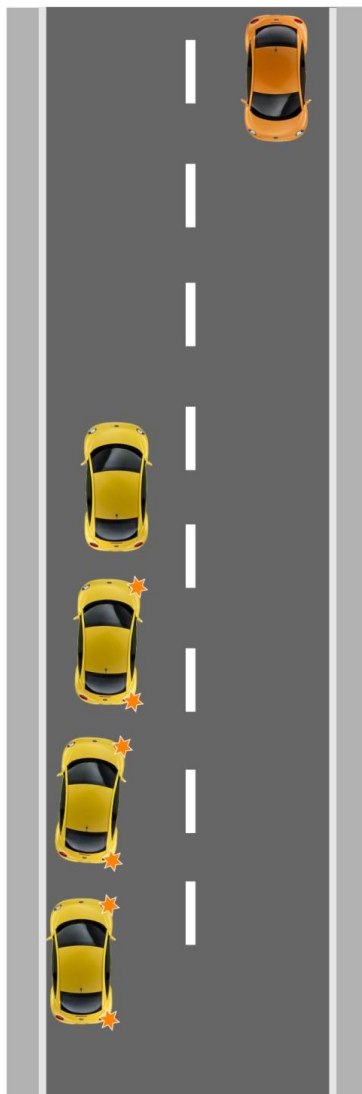
Clutch partly up = plates just touching (biting point)



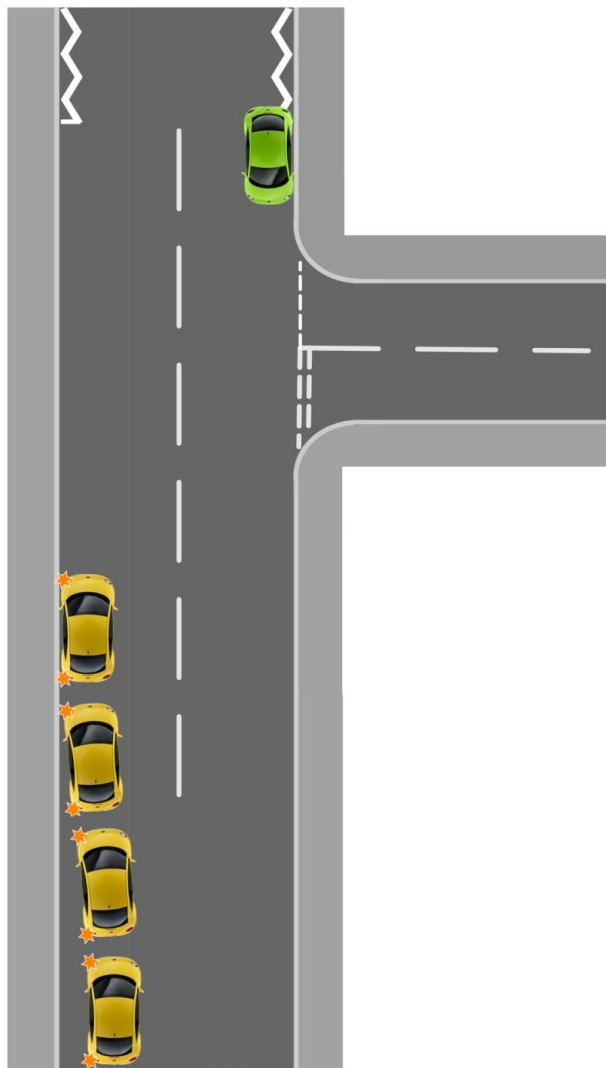
Clutch fully up = plates gripping on



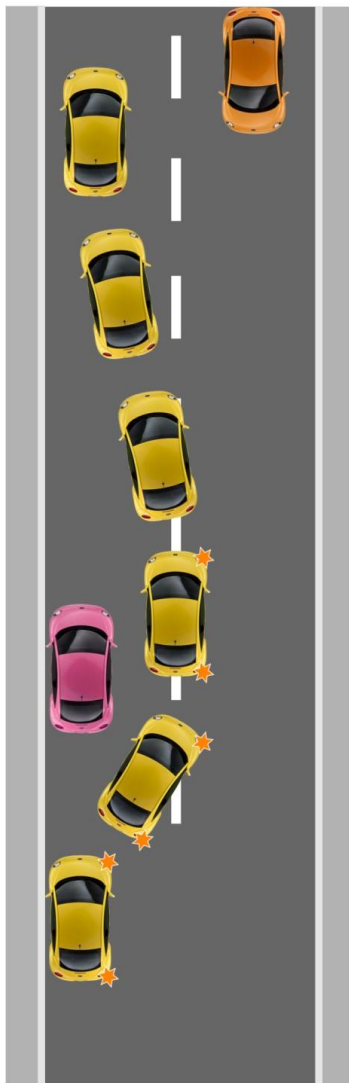
## Moving Off



Pull up Left

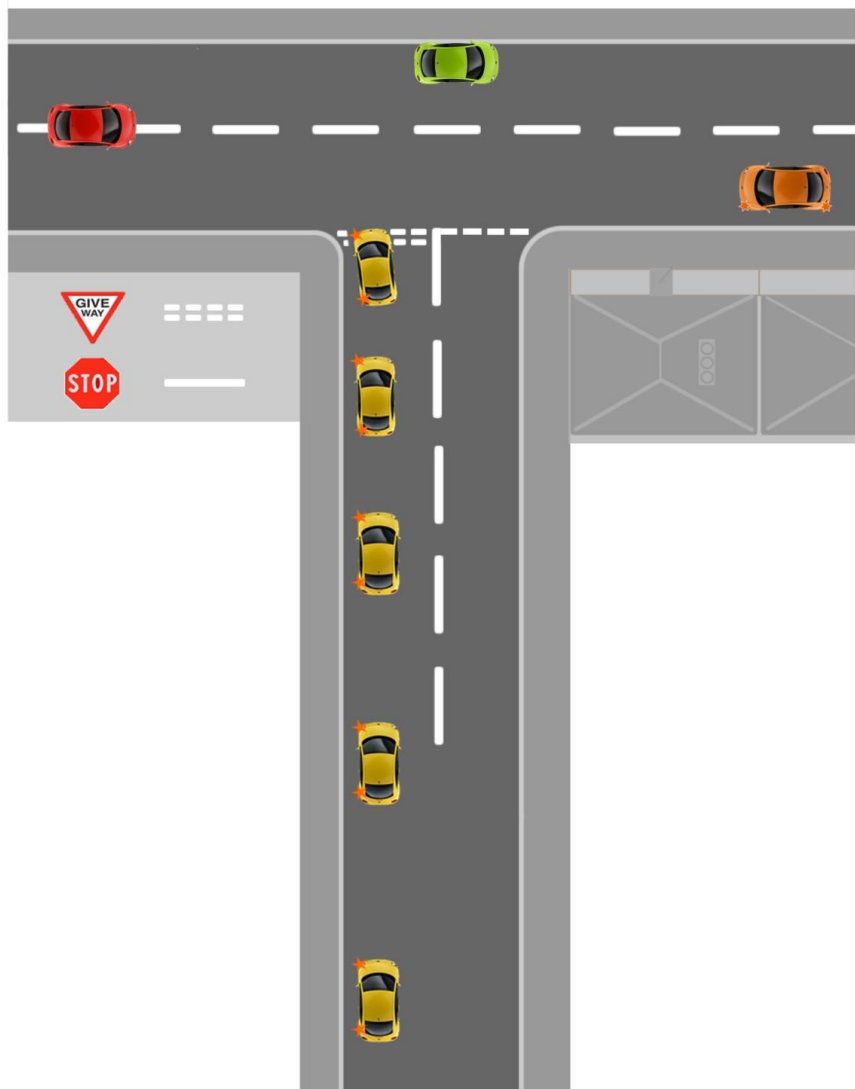


## Angled Start

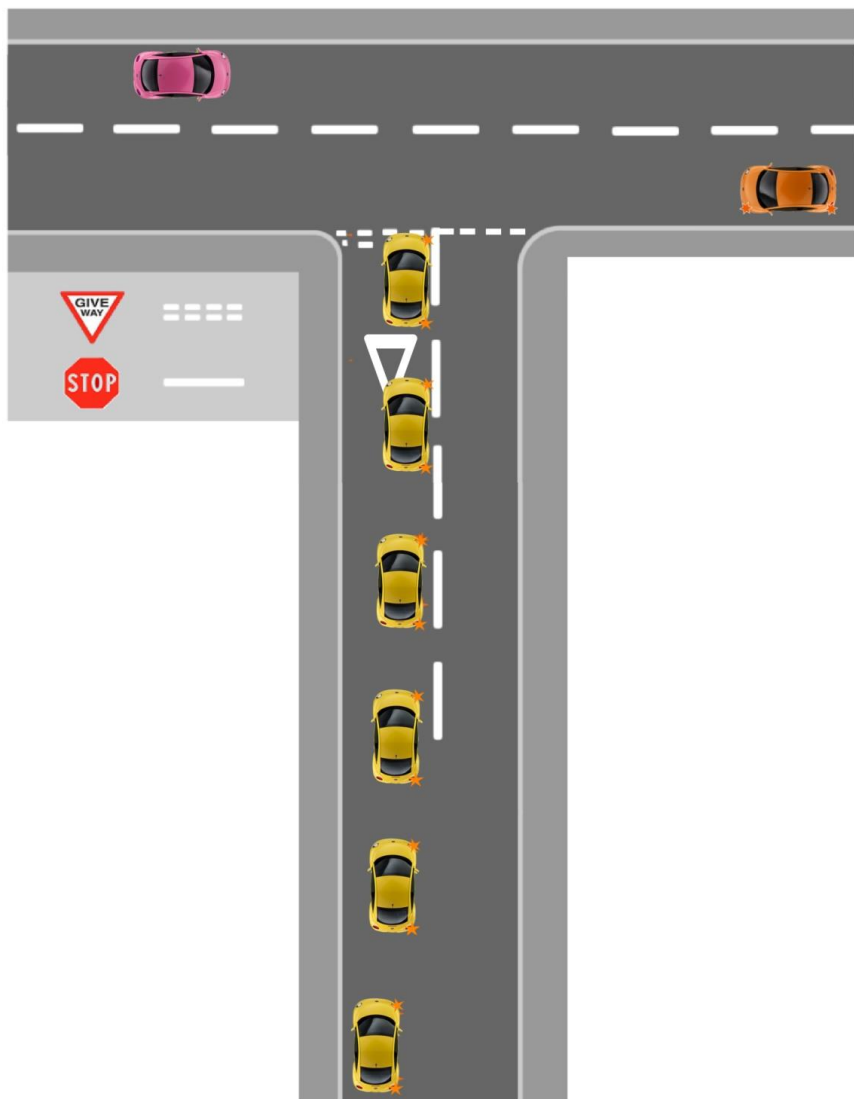




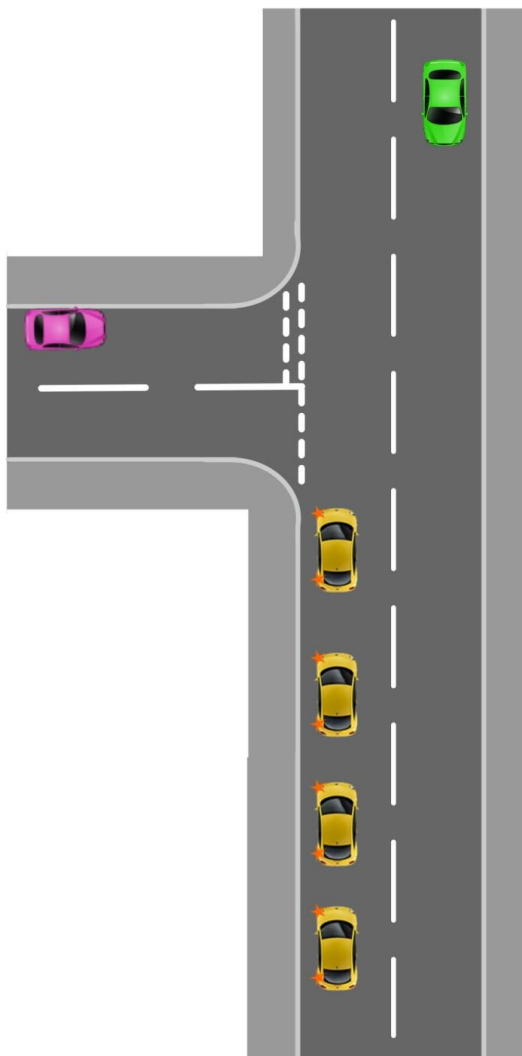
## Emerging Left



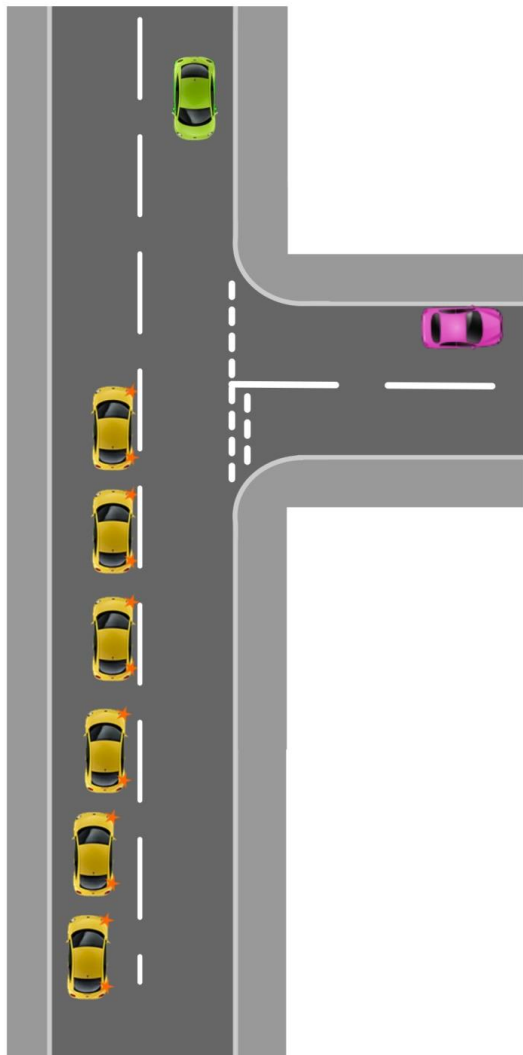
## Emerging Right



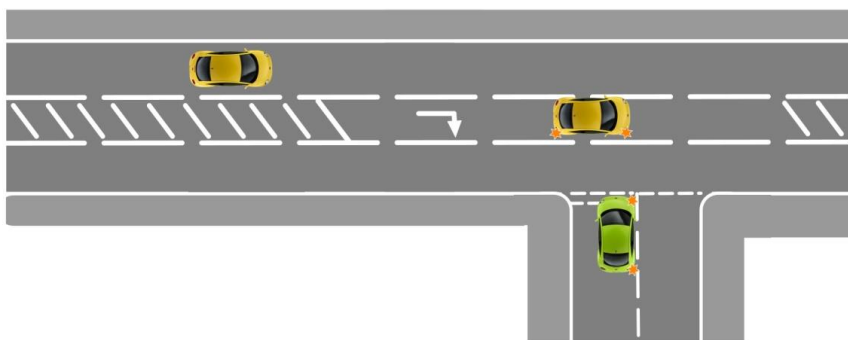
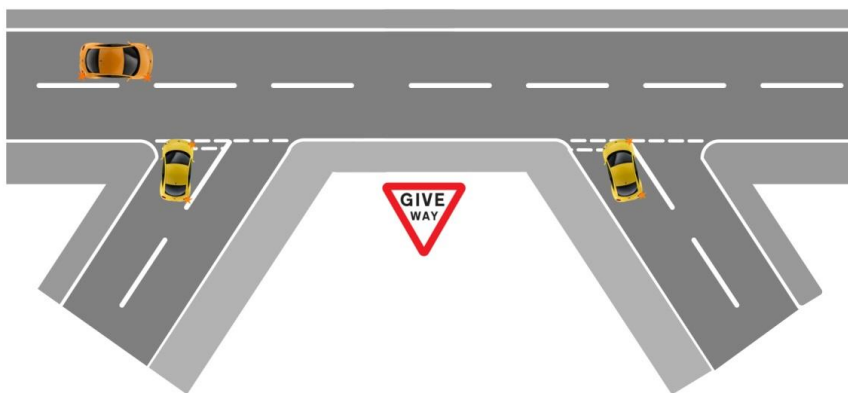
## Turning Left



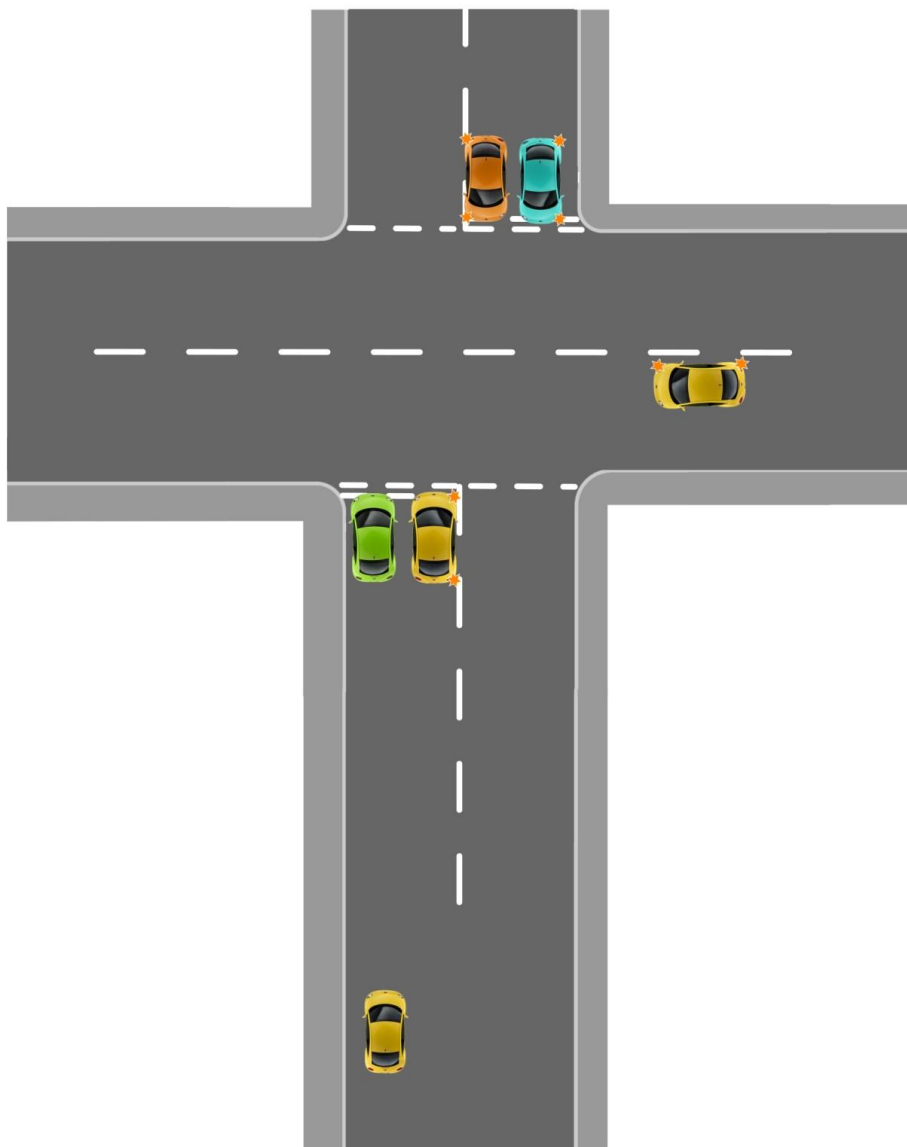
## Turning Right



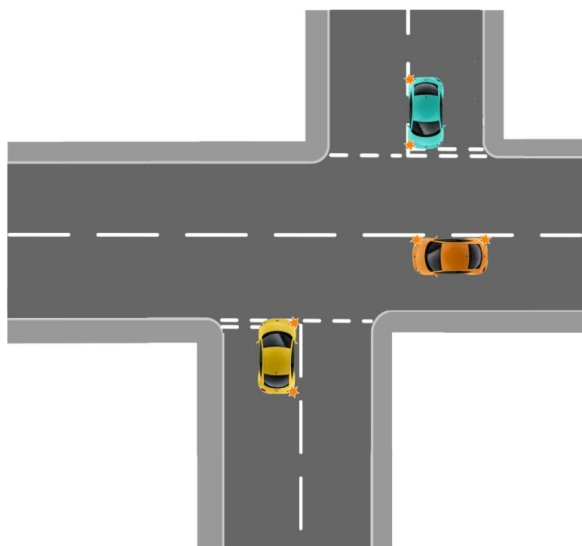
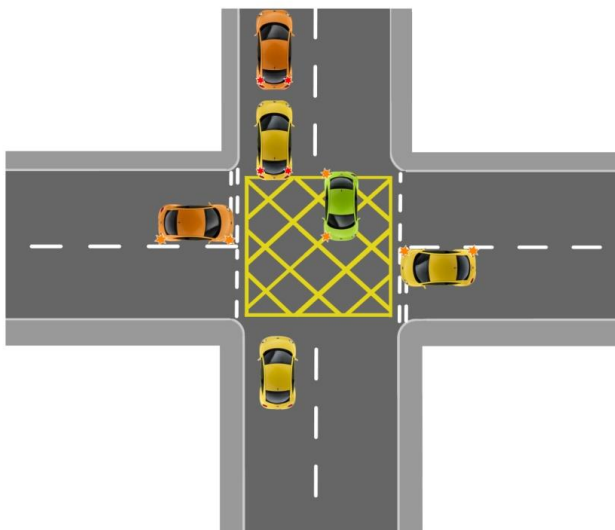
## Other Junctions



## Crossroads



## Other Cross Roads



# Traffic Lights

Offside to Offside

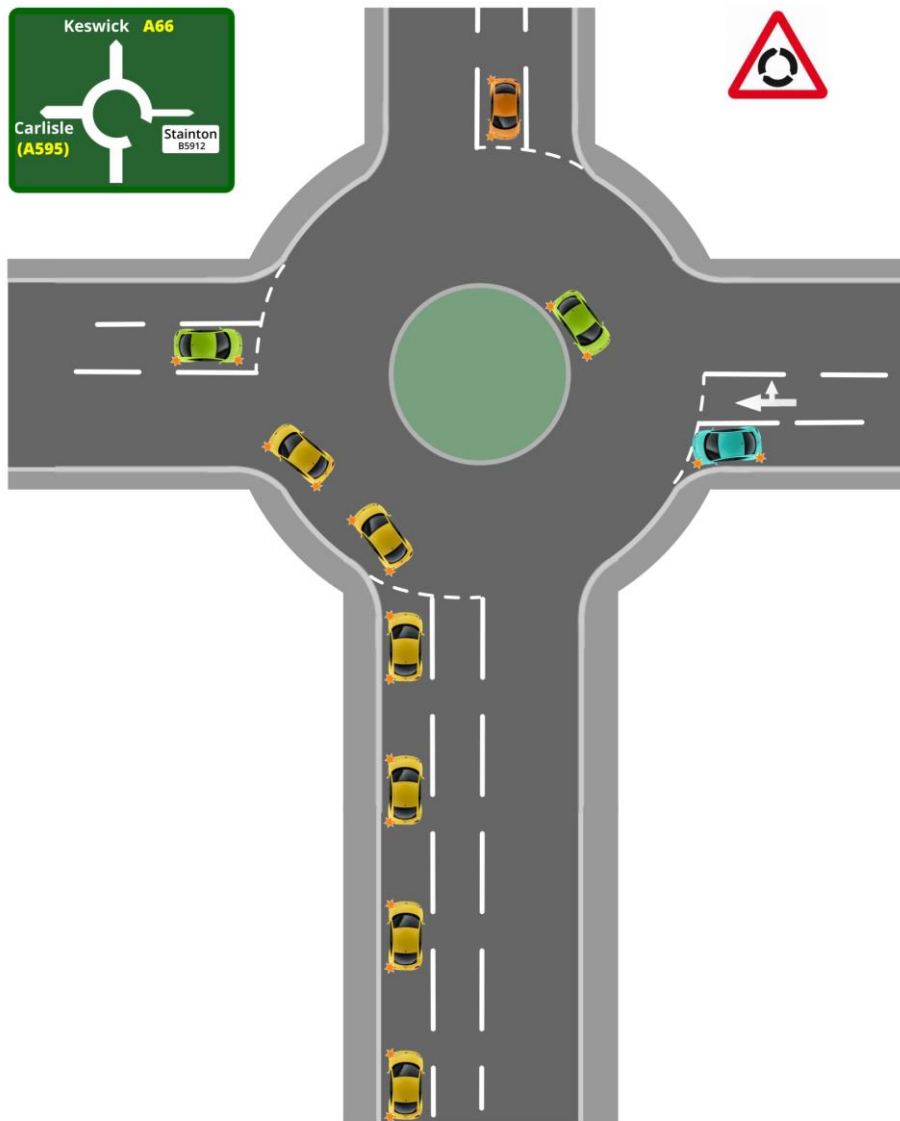




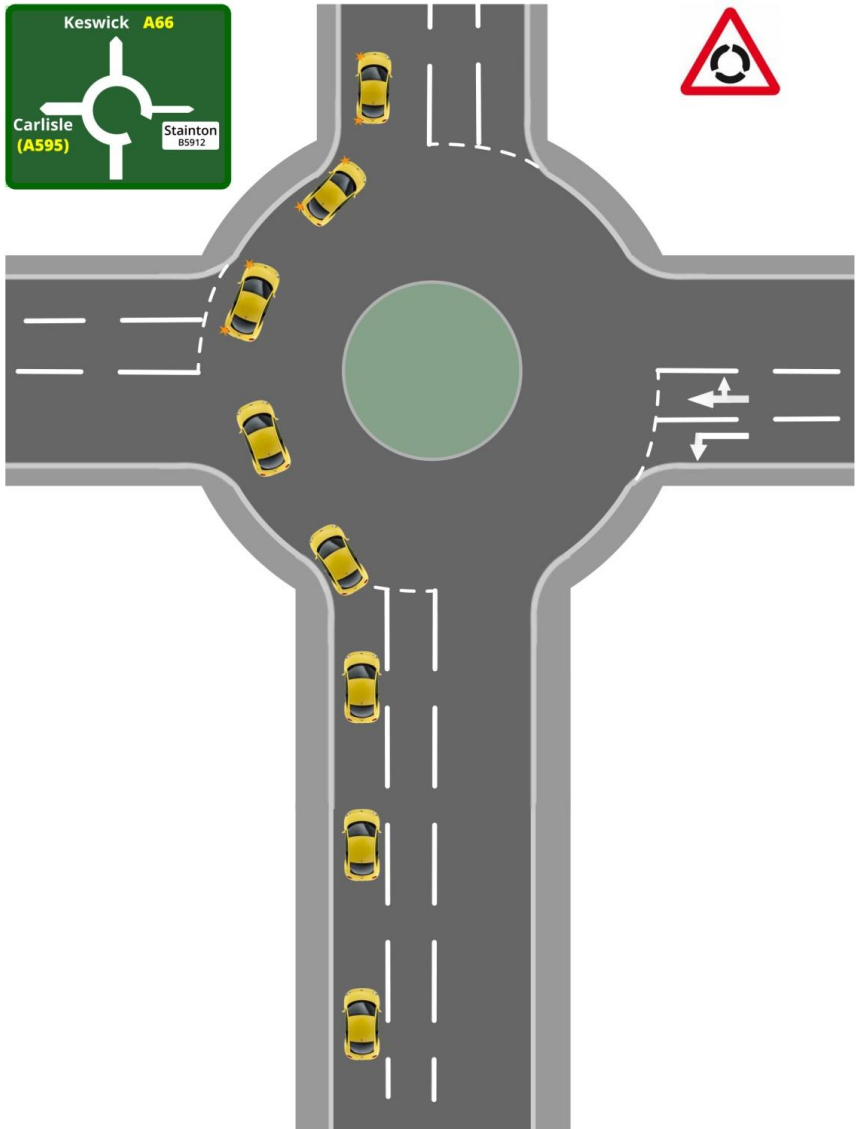
## Traffic Lights



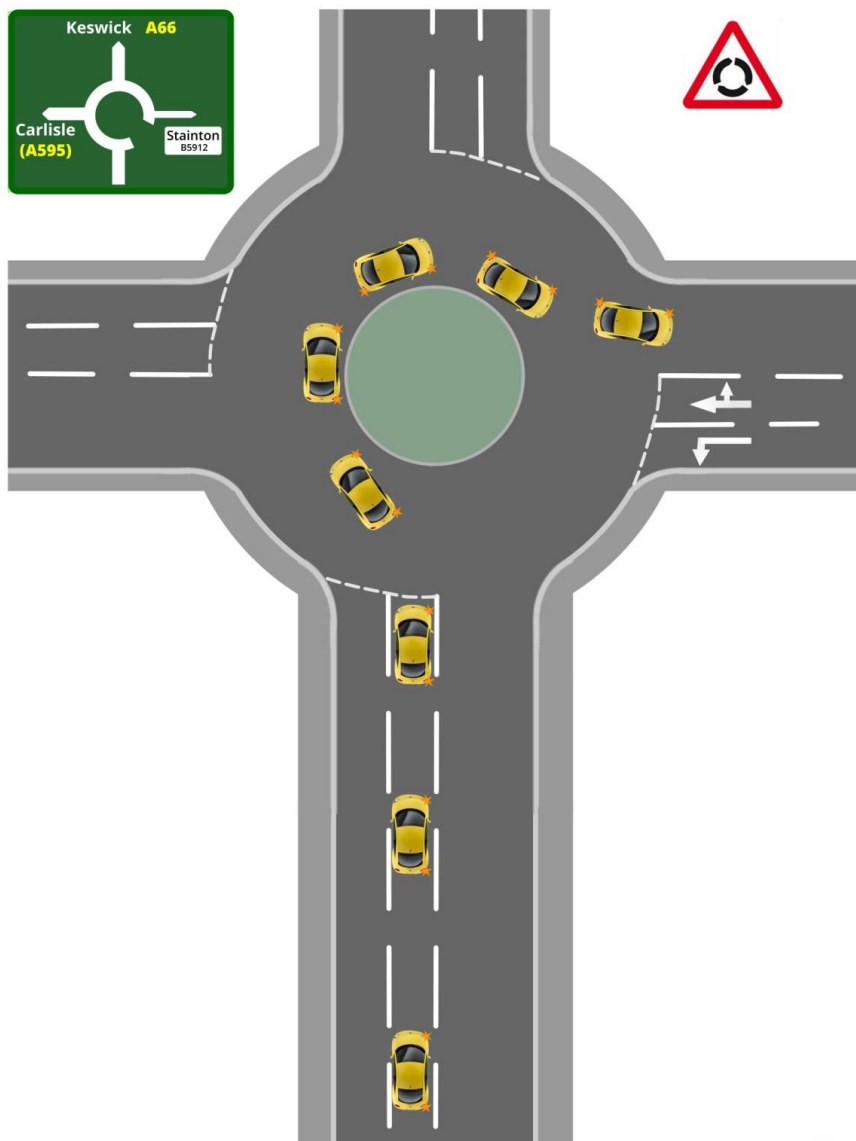
## Roundabouts - Left



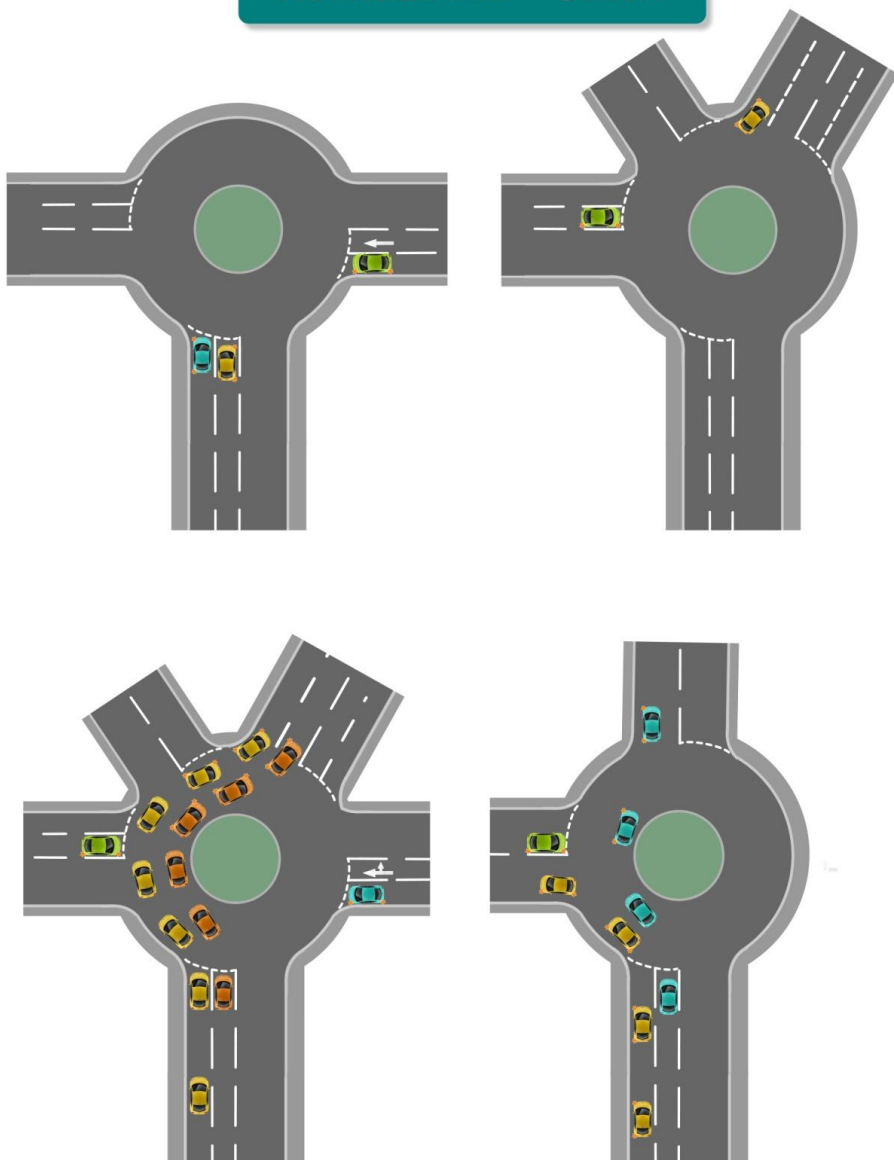
## Roundabouts - Ahead



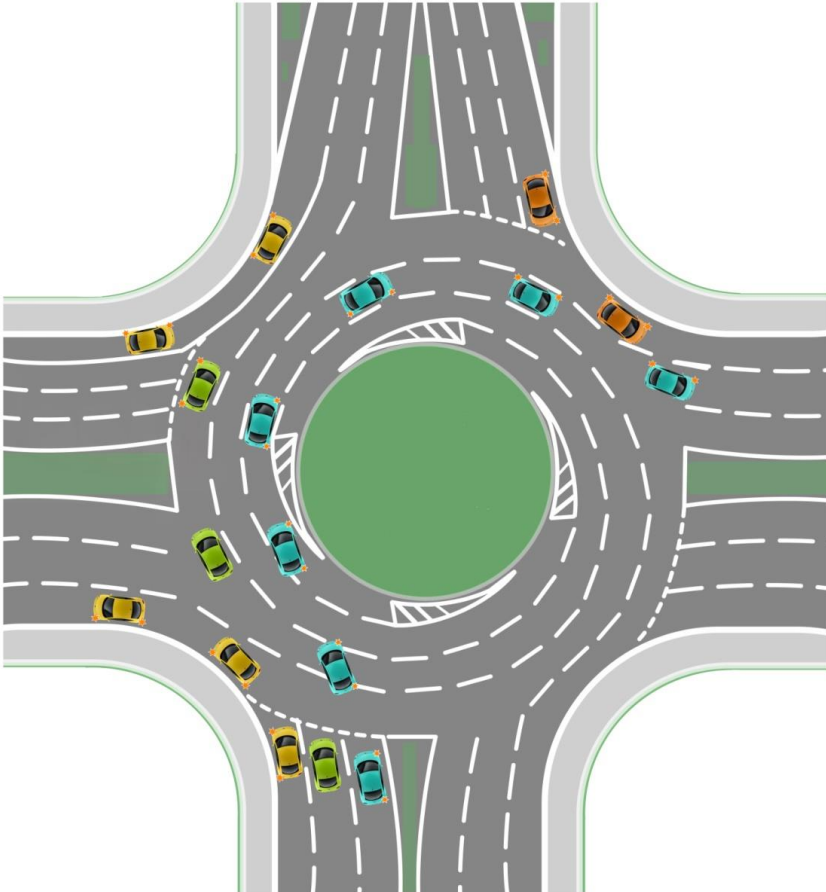
## Roundabouts - Right



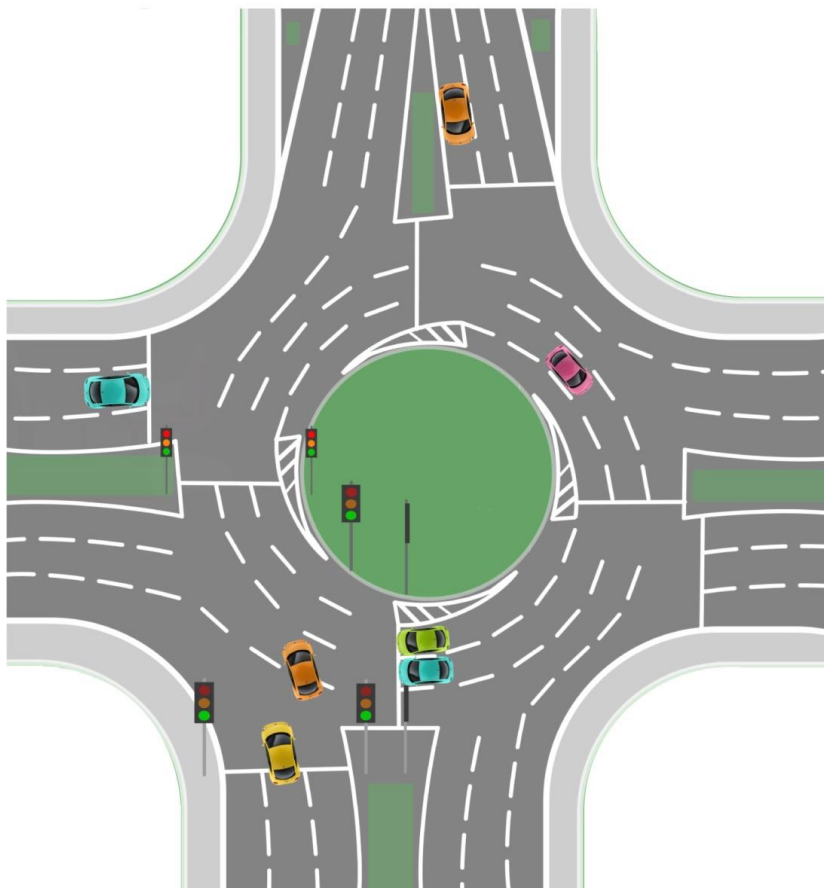
## Roundabouts - Others



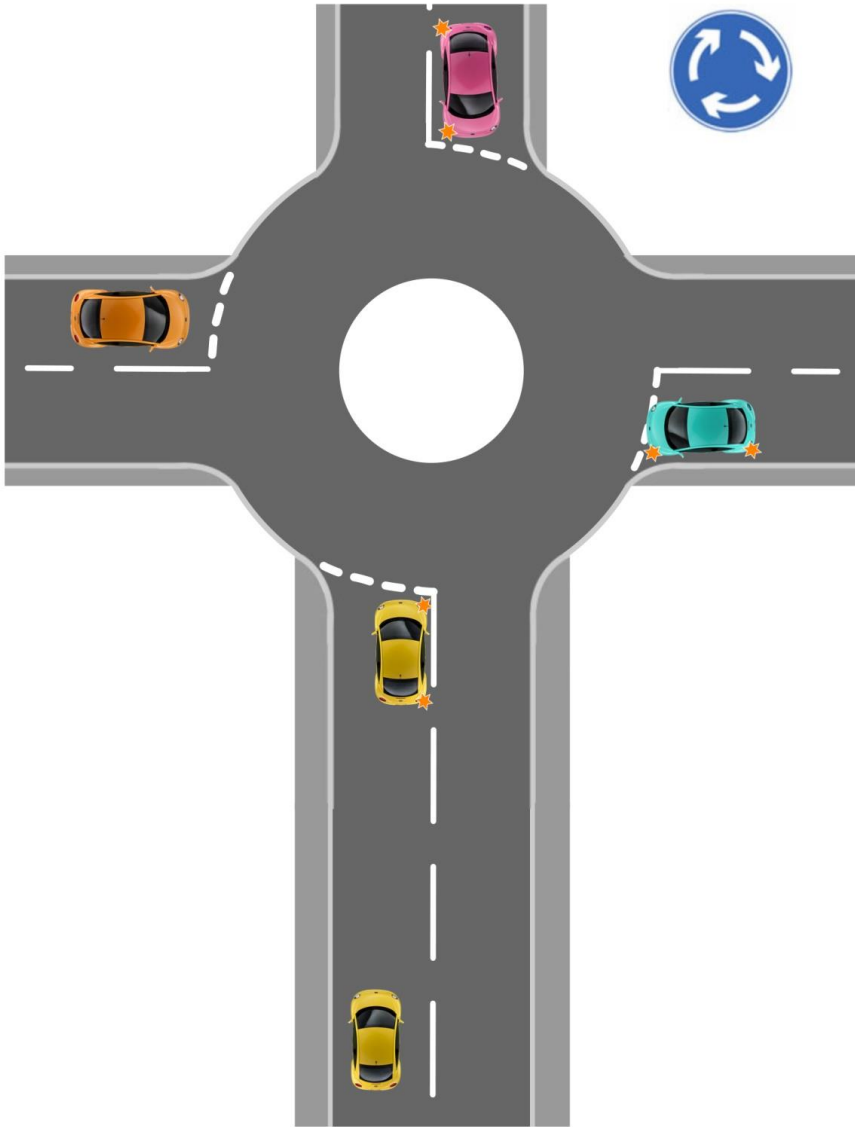
## Spiral Roundabout



## Roundabout Traffic Lights

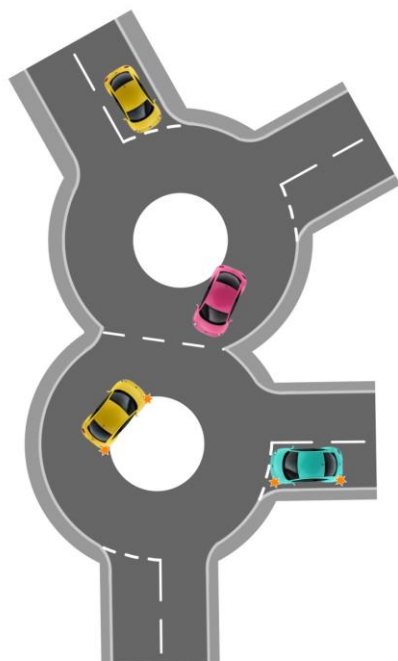
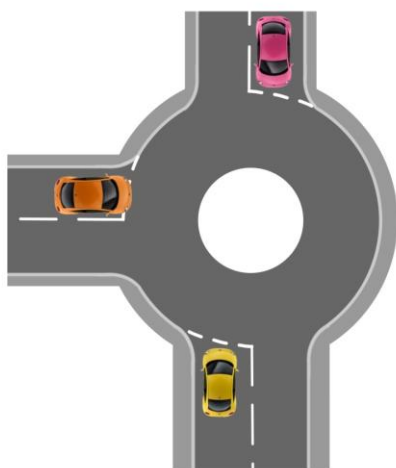


## Roundabouts - Mini

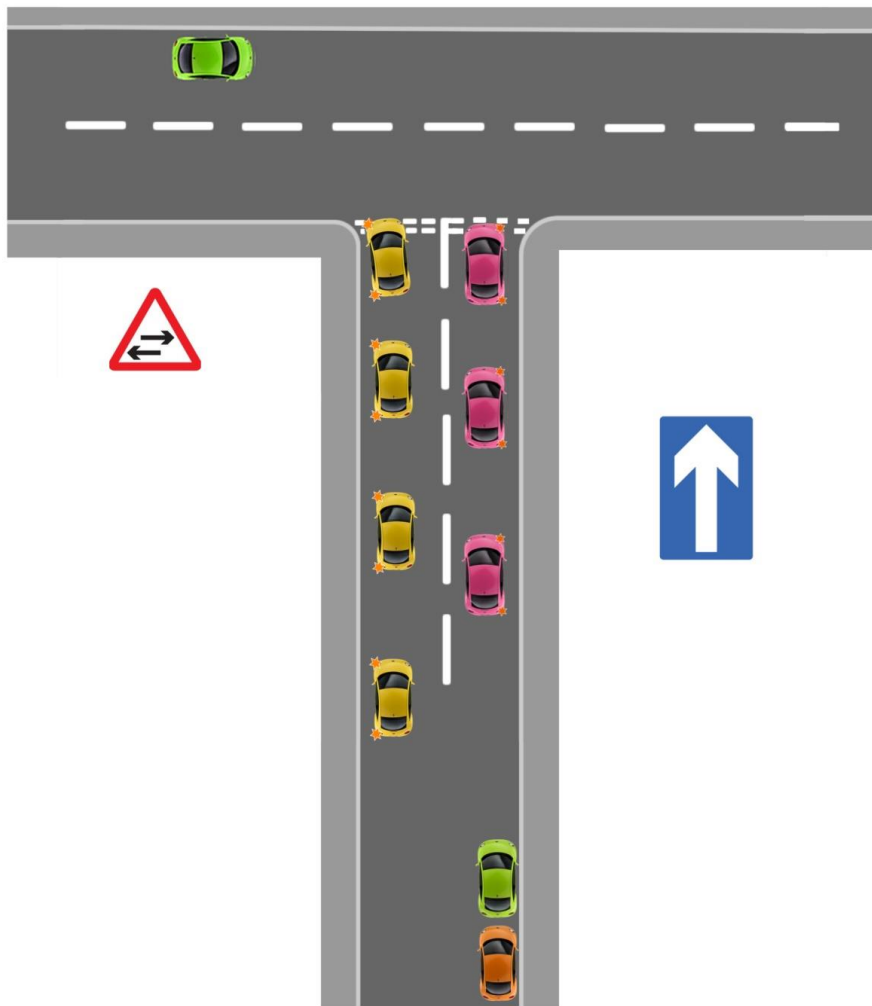




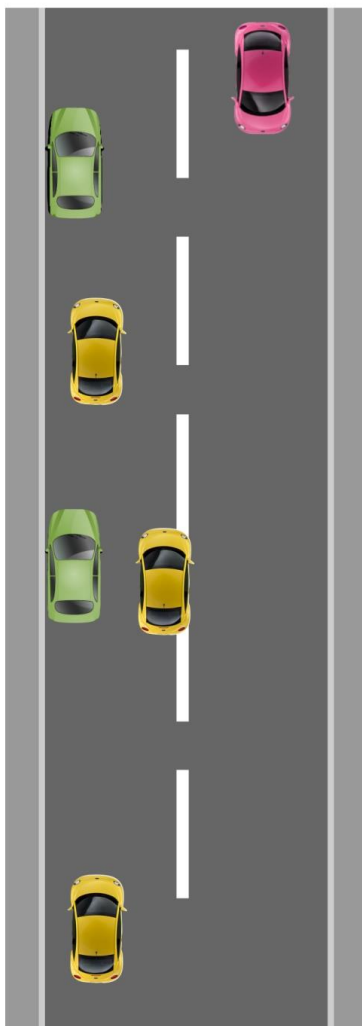
## Mini Roundabouts - Others



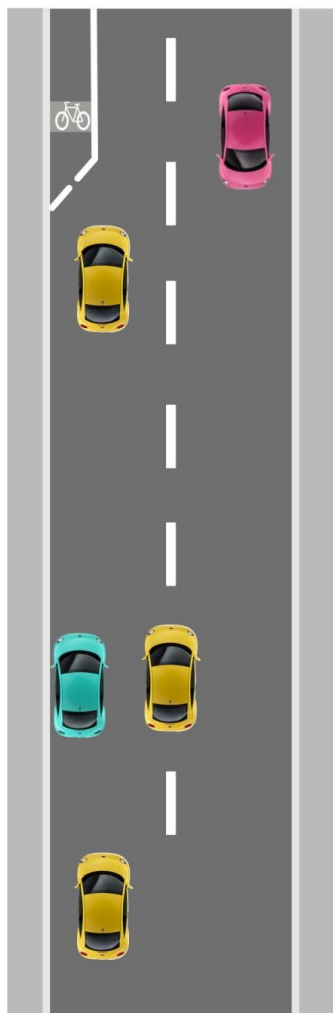
## One Way Streets



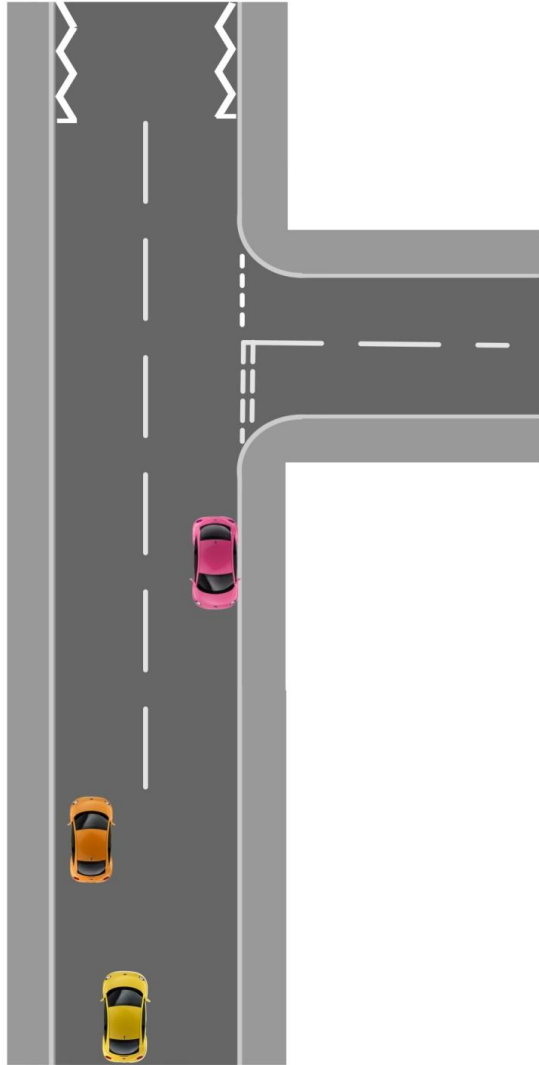
## Meeting Traffic



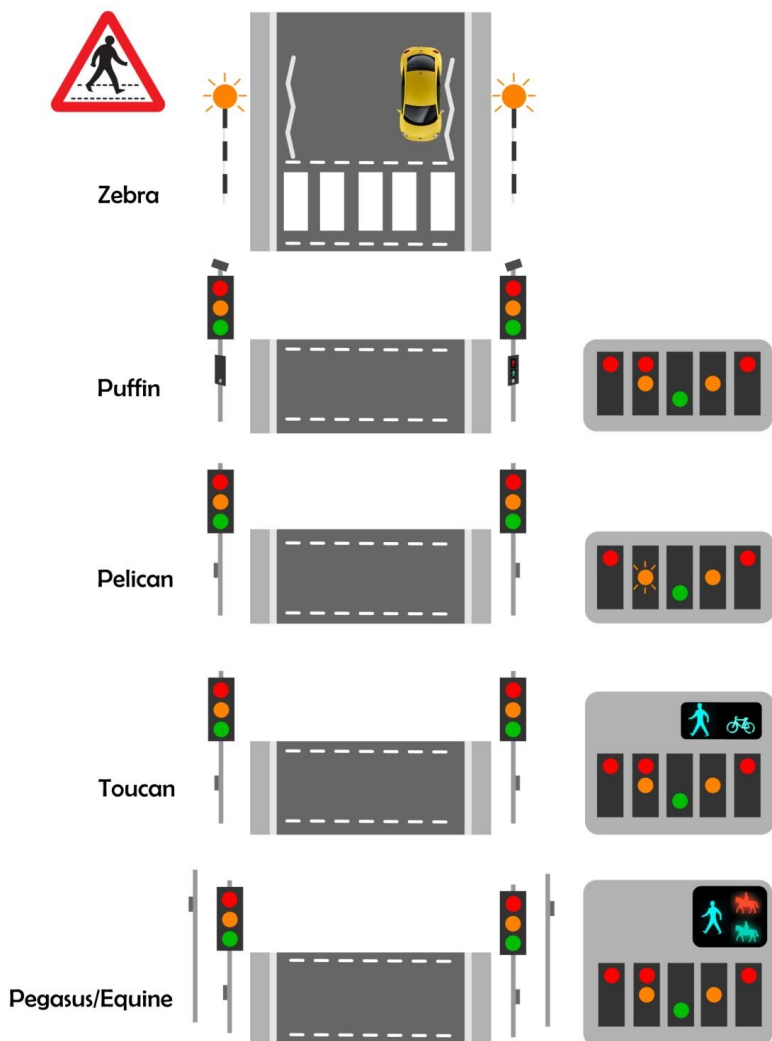
## Positioning



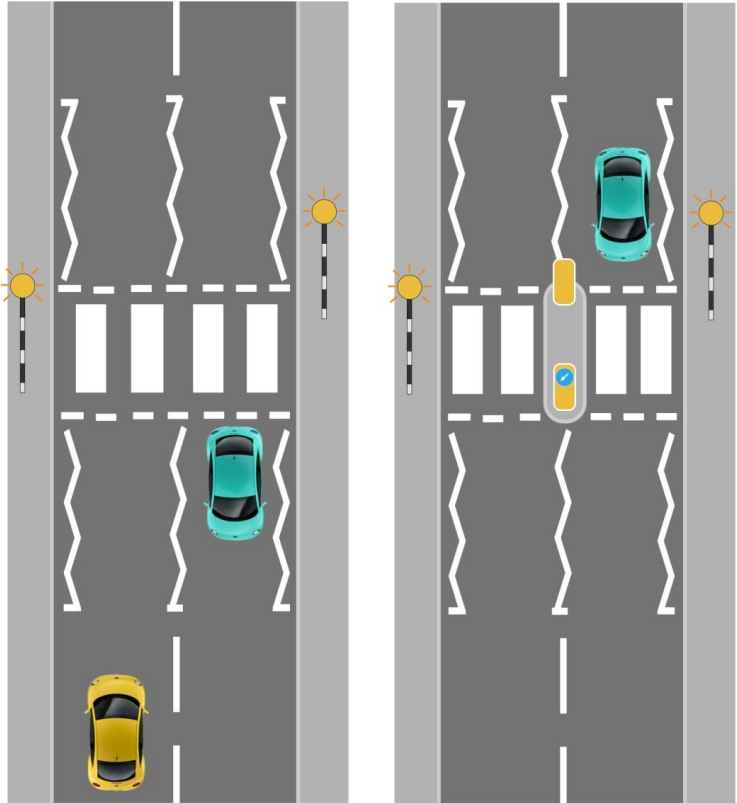
## Overtaking



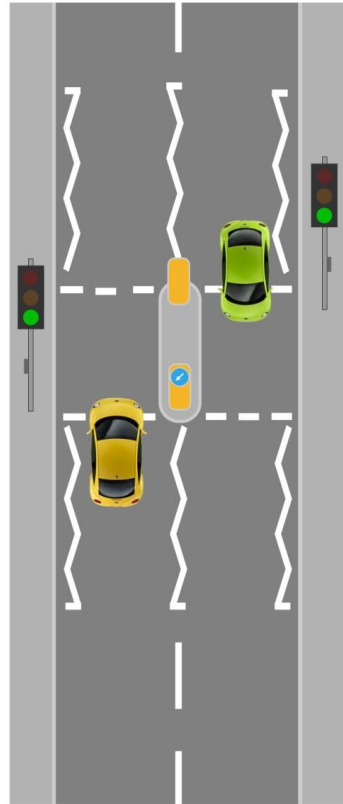
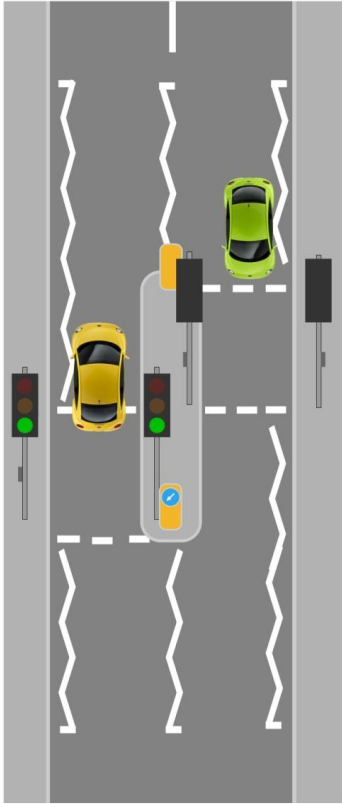
# Pedestrian Crossings



## Zebra Crossings



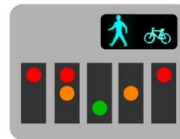
# Light Controlled Crossings



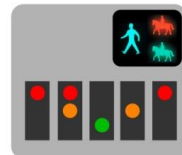
Pelican



Puffin



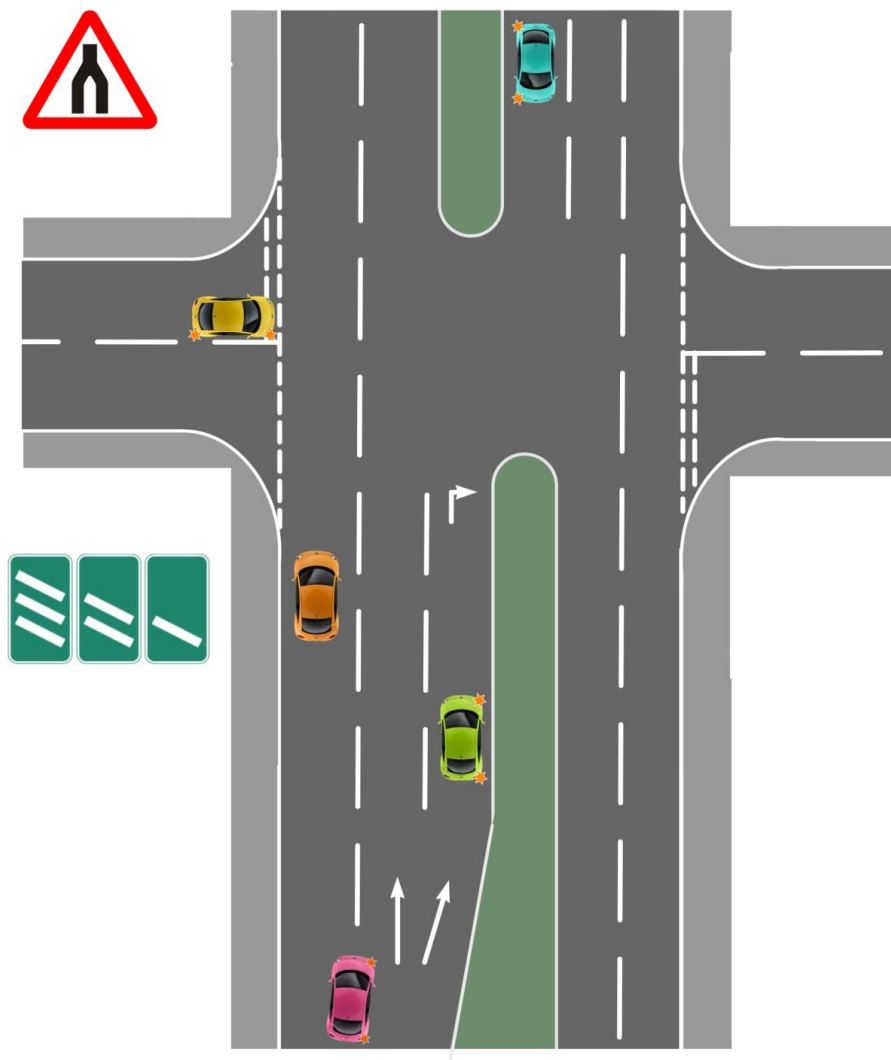
Toucan



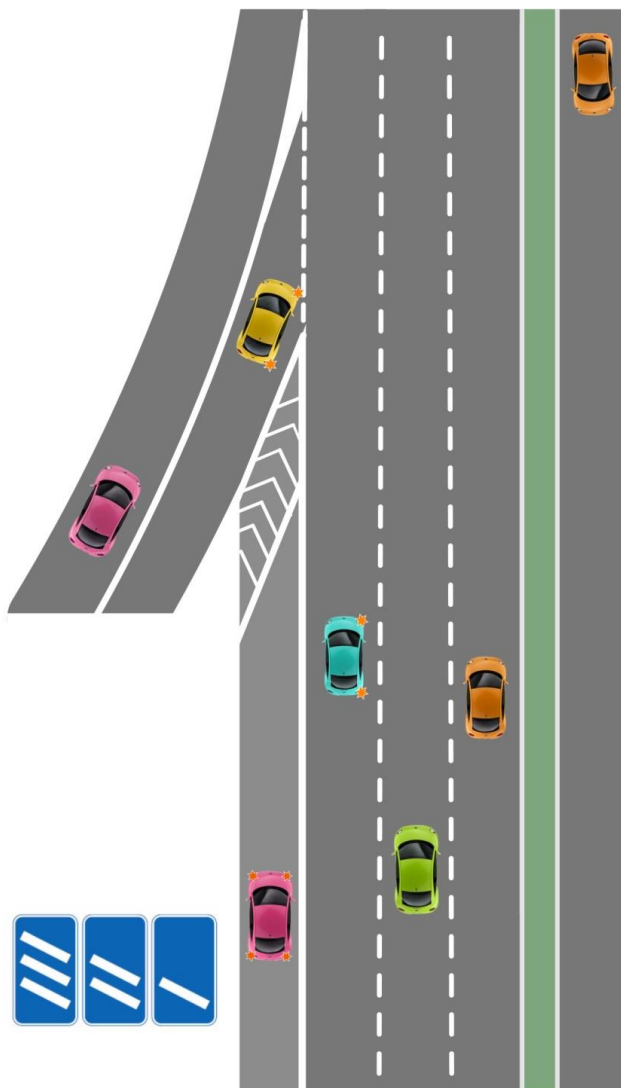
Pegasus/Equine



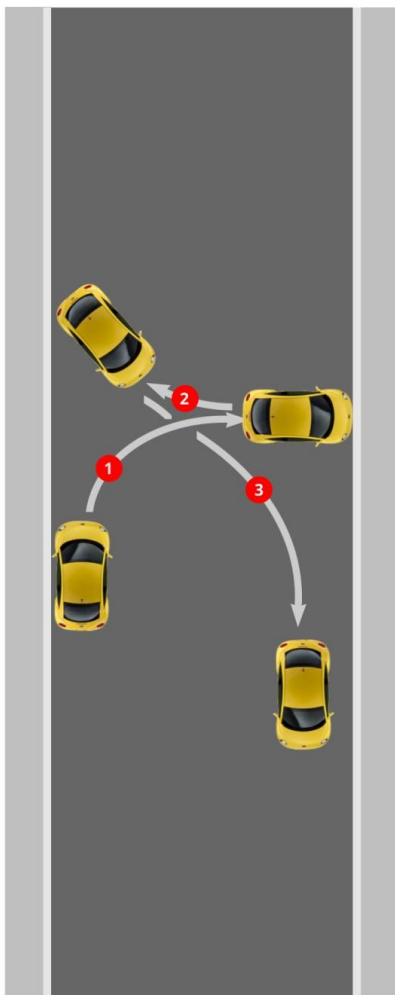
## Dual Carriageways



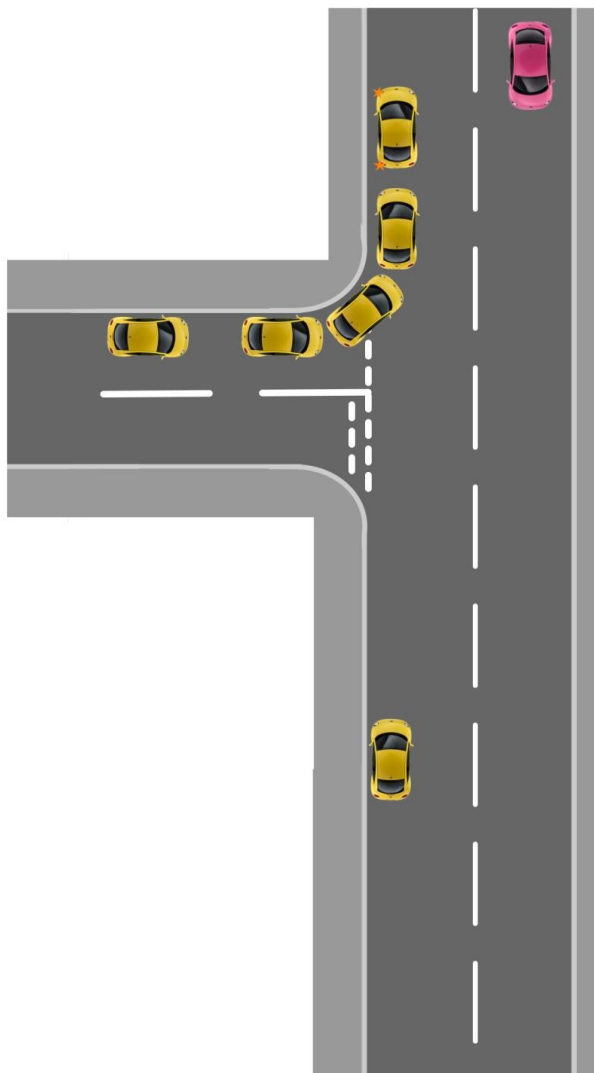
# Motorways



## Turn in the Road



## Reverse Left

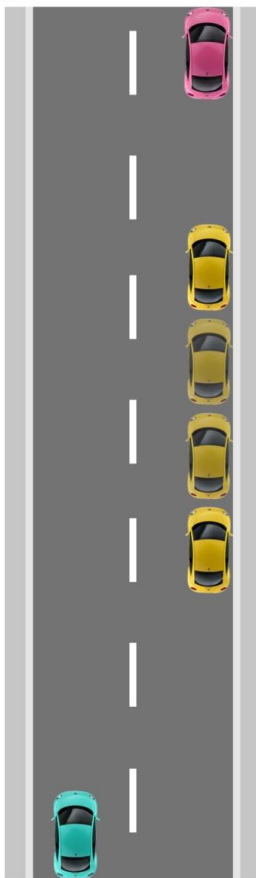


## Pull up on Right & Reverse

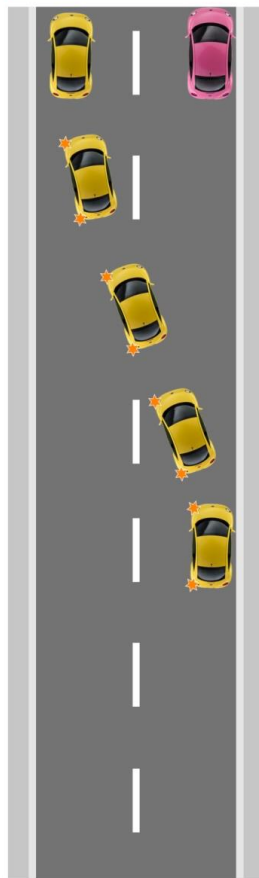
Pull up on right



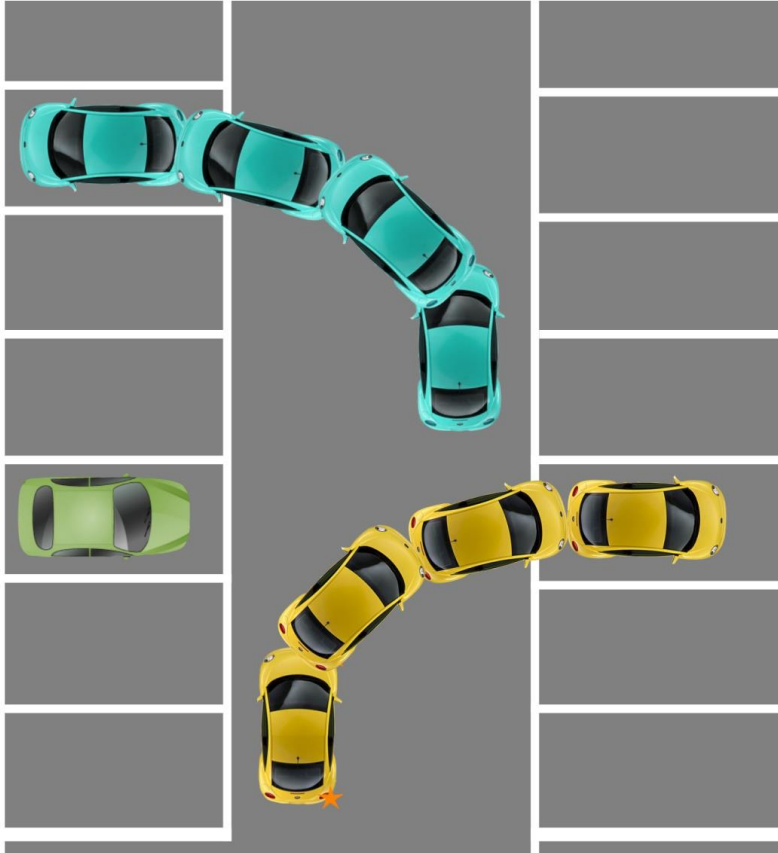
Reverse 2 car lengths



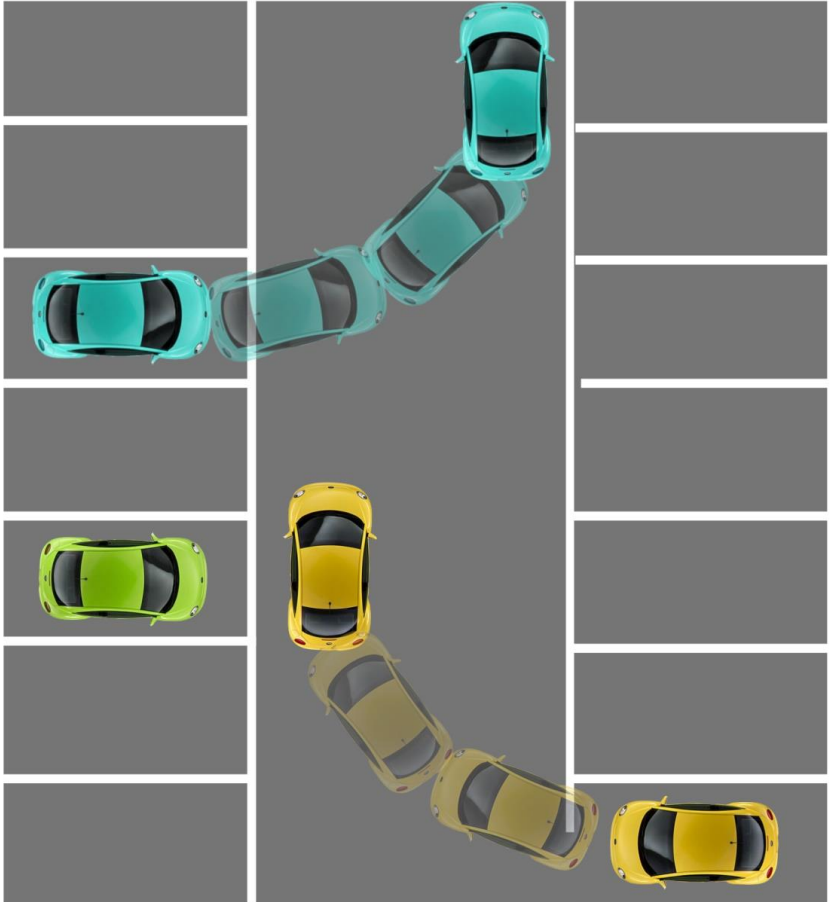
Pull away safely



## Forward Bay Park



## Reverse Bay Park

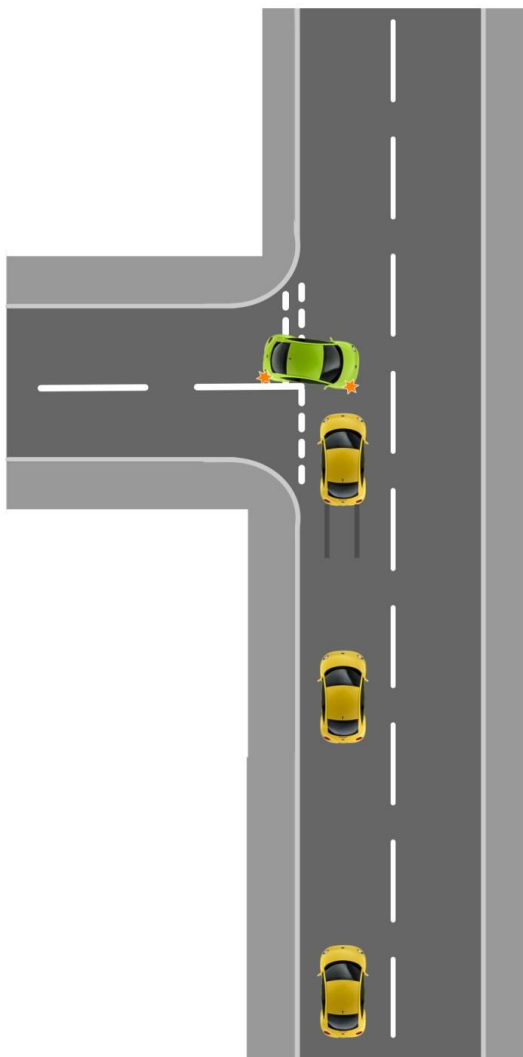


## Parallel Park





## Emergency Stop



# Road Signs and Road Markings



Warning



Orders - Must Not



Orders - Must



Road Works



Primary Routes



Local and non-Primary Routes

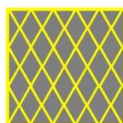


Motorways

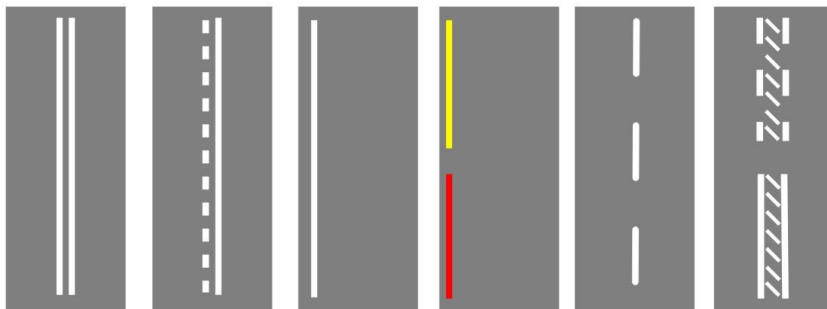


Stop

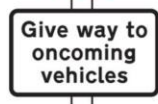
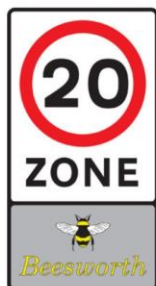
Give Way



Box Junction



## Road & Traffic Signs









No footway  
for 400 yds

Safe height  
16'6" ( 5.0 m )



Ice



Queues  
likely



Humps for  
½ mile



Hidden dip

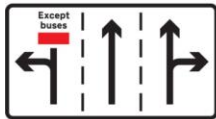
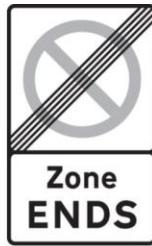


Soft verges  
for 2 miles









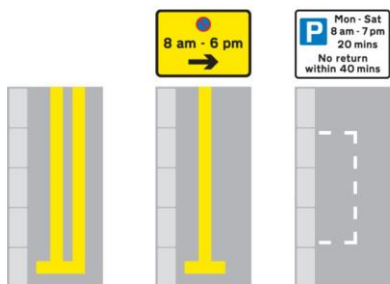
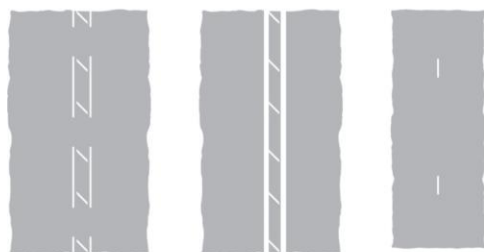


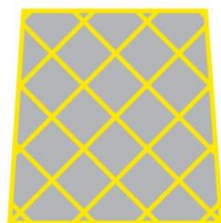
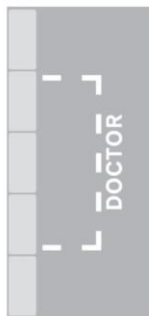
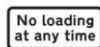
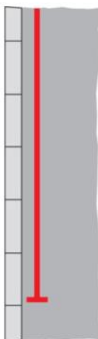
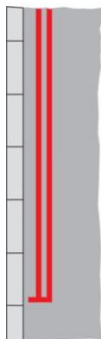


Priority over  
oncoming  
vehicles



# Road Markings





## Tell Me Questions

**1. Tell me how you'd check that the brakes are working before starting a journey.**

Brakes should not feel spongy or slack. Brakes should be tested as you set off. Vehicle should not pull to one side.

**2. Tell me where you'd find the information for the recommended tyre pressures for this car and how tyre pressures should be checked.**

Manufacturer's guide, use a reliable pressure gauge, check and adjust pressures when tyres are cold, don't forget spare tyre, remember to refit valve caps.

**3. Tell me how you make sure your head restraint is correctly adjusted so it provides the best protection in the event of a crash.**

The head restraint should be adjusted so the rigid part of the head restraint is at least as high as the eye or top of the ears, and as close to the back of the head as is comfortable. Note: Some restraints might not be adjustable.

**4. Tell me how you'd check the tyres to ensure that they have sufficient tread depth and that their general condition is safe to use on the road.**

No cuts and bulges, 1.6mm of tread depth across the central three-quarters of the breadth of the tyre, and around the entire outer circumference of the tyre.

**5. Tell me how you'd check that the headlights and tail lights are working. You don't need to exit the vehicle.**

Explain you'd operate the switch (turn on ignition if necessary), then walk round vehicle (as this is a 'tell me' question, you don't need to physically check the lights).

**6. Tell me how you'd know if there was a problem with your anti-lock braking system.**

Warning light should illuminate if there is a fault with the anti-lock braking system.

**7. Tell me how you'd check the direction indicators are working. You don't need to exit the vehicle.**

Explain you'd operate the switch (turn on ignition if necessary), and then walk round vehicle (as this is a 'tell me' question, you don't need to physically check the lights).

**8. Tell me how you'd check the brake lights are working on this car.**

Explain you'd operate the brake pedal, make use of reflections in windows or doors, or ask someone to help.

**9. Tell me how you'd check the power-assisted steering is working before starting a journey.**

If the steering becomes heavy, the system may not be working properly. Before starting a journey, 2 simple checks can be made.

Gentle pressure on the steering wheel, maintained while the engine is started, should result in a slight but noticeable movement as the system begins to operate. Alternatively turning the steering wheel just after moving off will give an immediate indication that the power assistance is functioning.

**10. Tell me how you'd switch on the rear fog light(s) and explain when you'd use it/them. You don't need to exit the vehicle.**

Operate switch (turn on dipped headlights and ignition if necessary). Check warning light is on. Explain use.

**11. Tell me how you switch your headlight from dipped to main beam and explain how you'd know the main beam is on.**

Operate switch (with ignition or engine on if necessary), check with main beam warning light.

## Tell Me Questions (under bonnet)

**12. Open the bonnet and tell me how you'd check that the engine has sufficient oil.**

Identify dipstick/oil level indicator, describe check of oil level against the minimum and maximum markers.

**13. Open the bonnet and tell me how you'd check that the engine has sufficient engine coolant.**

Identify high and low level markings on header tank where fitted or radiator filler cap, and describe how to top up to correct level.

**14. Open the bonnet and tell me how you'd check that you have a safe level of hydraulic brake fluid.**

Identify reservoir, check level against high and low markings.

## Show Me Questions

**When it's safe to do so, can you show me how you wash and clean the rear windscreen?**

**When it's safe to do so, can you show me how you wash and clean the front windscreen?**

**When it's safe to do so, can you show me how you'd switch on your dipped headlights?**

**When it's safe to do so, can you show me how you'd set the rear demister?**

**When it's safe to do so, can you show me how you'd operate the horn?**

**When it's safe to do so, can you show me how you'd demist the front windscreen?**

**When it's safe to do so, can you show me how you'd open and close the side window?**





All contents © ADI Ninja and may not be reproduced  
in any form without permission