

CONTENTS

- 1. Cockpit checks**
- 2. Clutch**
- 3. Moving off**
- 4. Pull up on the left (stopping)**
- 5. Angled start**
- 6. Emerging left**
- 7. Emerging right**
- 8. Turning left**
- 9. Turning right**
- 10. Other junctions**
- 11. Crossroads**
- 12. Other crossroads**
- 13. Traffic lights (offside to offside)**
- 14. Traffic lights (nearside to nearside)**
- 15. Roundabouts turning left**
- 16. Roundabouts turning ahead**
- 17. Roundabouts right**
- 18. Roundabouts other**
- 19. Spiral Roundabouts**
- 20. Spiral Roundabouts with traffic lights**
- 21. Mini roundabouts**
- 22. Mini roundabouts other**
- 23. One way streets**
- 24. Meeting traffic**
- 25. Positioning**
- 26. Overtaking**
- 27. Pedestrian crossings**
- 28. Zebra crossings**
- 29. Light controlled crossings**
- 30. Dual carriageways**
- 31. Motorways**
- 32. Turn in the road**
- 33. Reversing left**
- 34. Pull up on right & reverse**
- 35. Forward bay park**
- 36. Reverse bay park**
- 37. Parallel park**
- 38. Emergency Stop**

Road signs and markings

Tell me questions

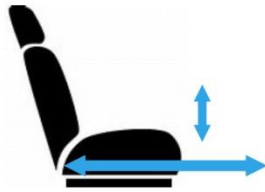
Show me questions

Cockpit Checks

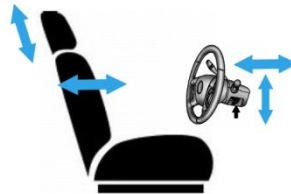
Doors



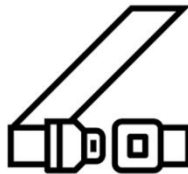
Seat Base



Seat Back/Steering Wheel



Seat Belts

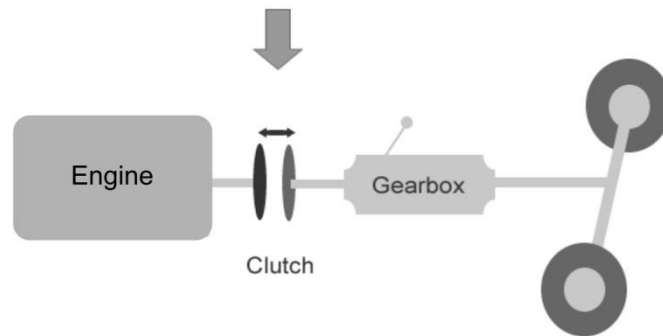


Mirrors

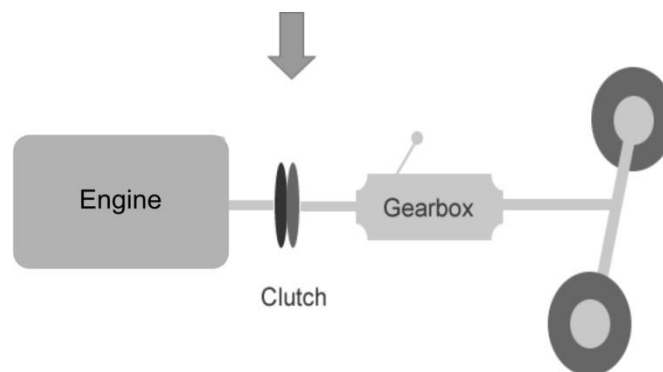


Clutch

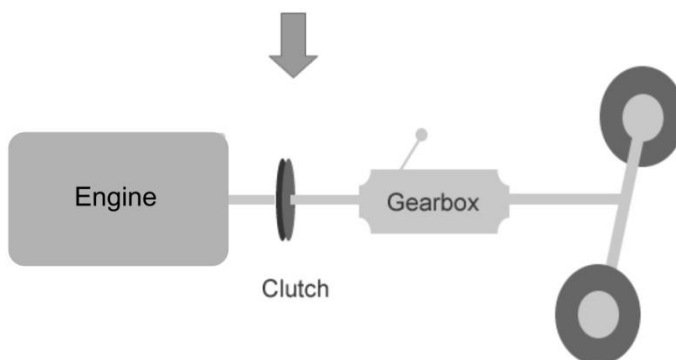
Clutch pedal down = plates pushed apart



Clutch partly up = plates just touching (biting point)



Clutch fully up = plates gripping on



Moving Off

Preparation

Clutch down



First gear



Gas



Biting point



Observation

Mirrors



Ahead



Blind Spot



Signal if necessary



Manoeuvre

Release handbrake



Ease clutch up slowly



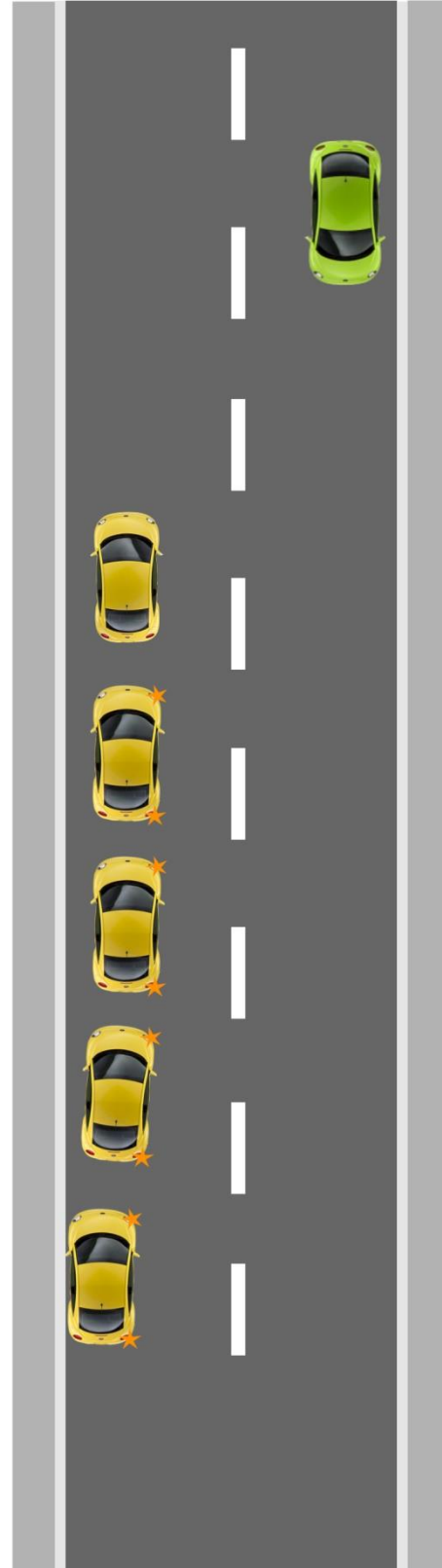
Increase gas



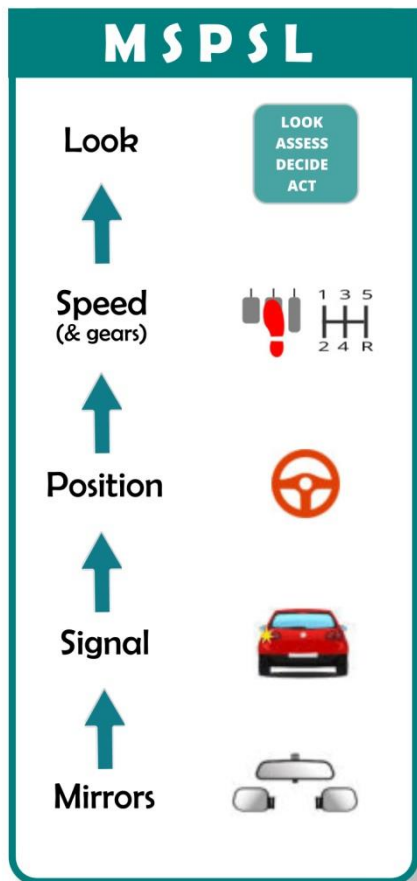
Steer away from the kerb & straighten up



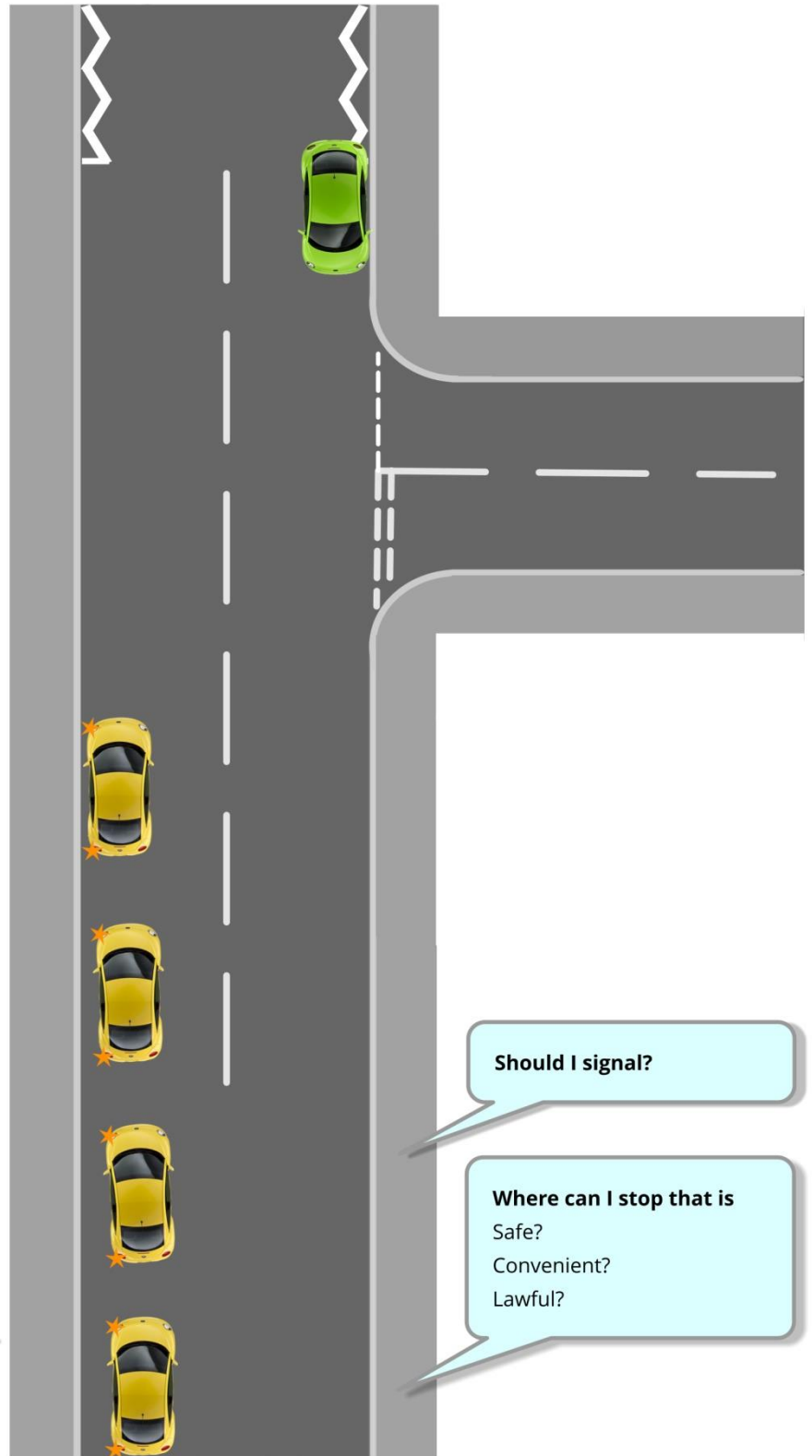
Check mirrors
Cancel signal



Pull up Left



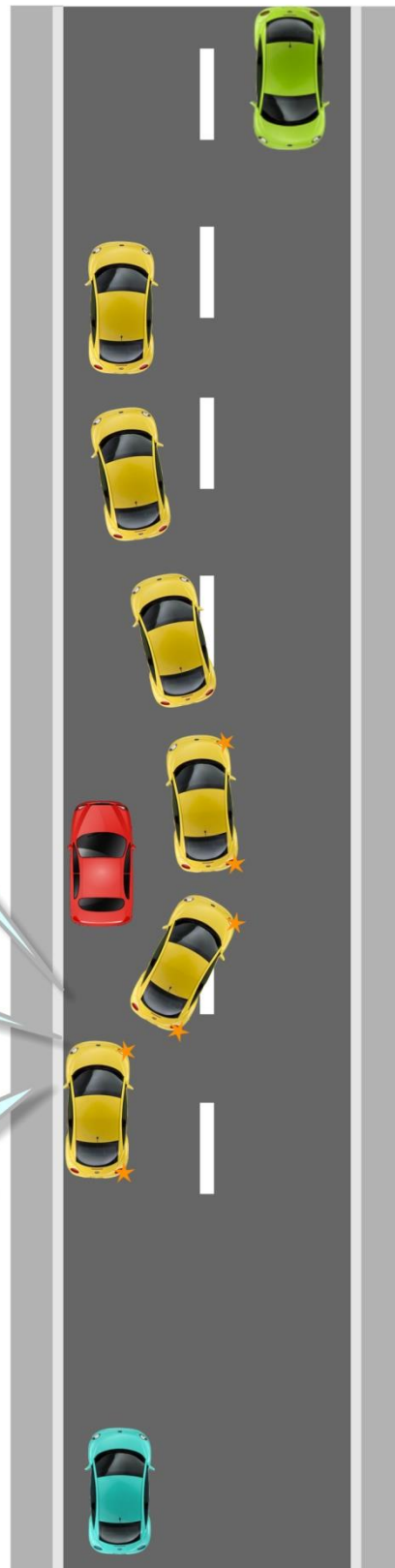
What's happening behind?



Should I signal?

Where can I stop that is Safe?
Convenient?
Lawful?

Angled Start



Where should I look?

Should I signal?

How will I keep the car slow?

Preparation

Clutch down



First gear



Gas



Biting point



Observation

Mirrors



Ahead



Blind Spot



Signal if necessary



Manoeuvre

Release handbrake



Ease clutch up slowly



Increase gas



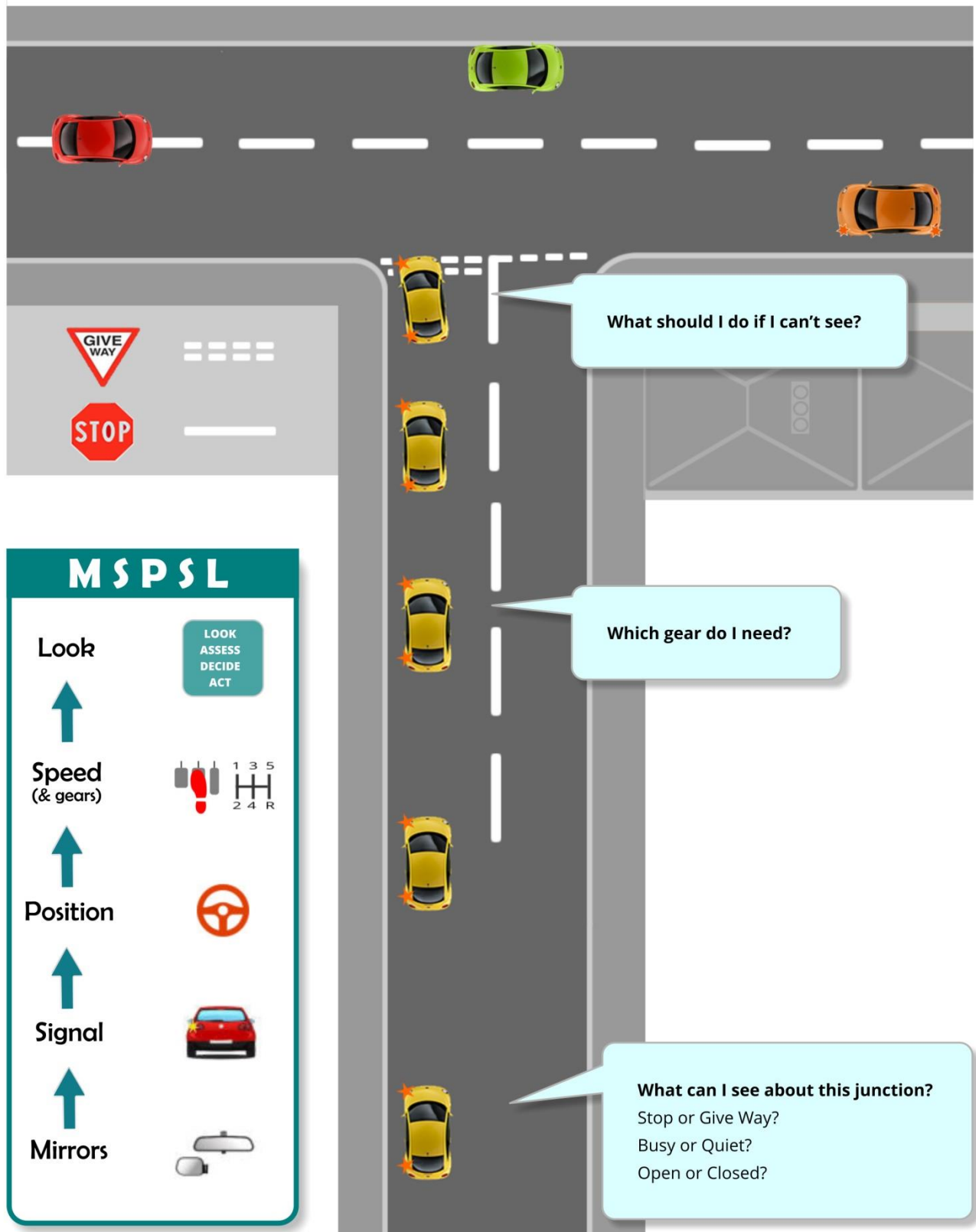
Steer away from the kerb & straighten up then steer in to normal driving position



Check mirrors



Emerging Left



M S P S L

Look

↑

LOOK
ASSESS
DECIDE
ACT

**Speed
(& gears)**

↑

Position

↑

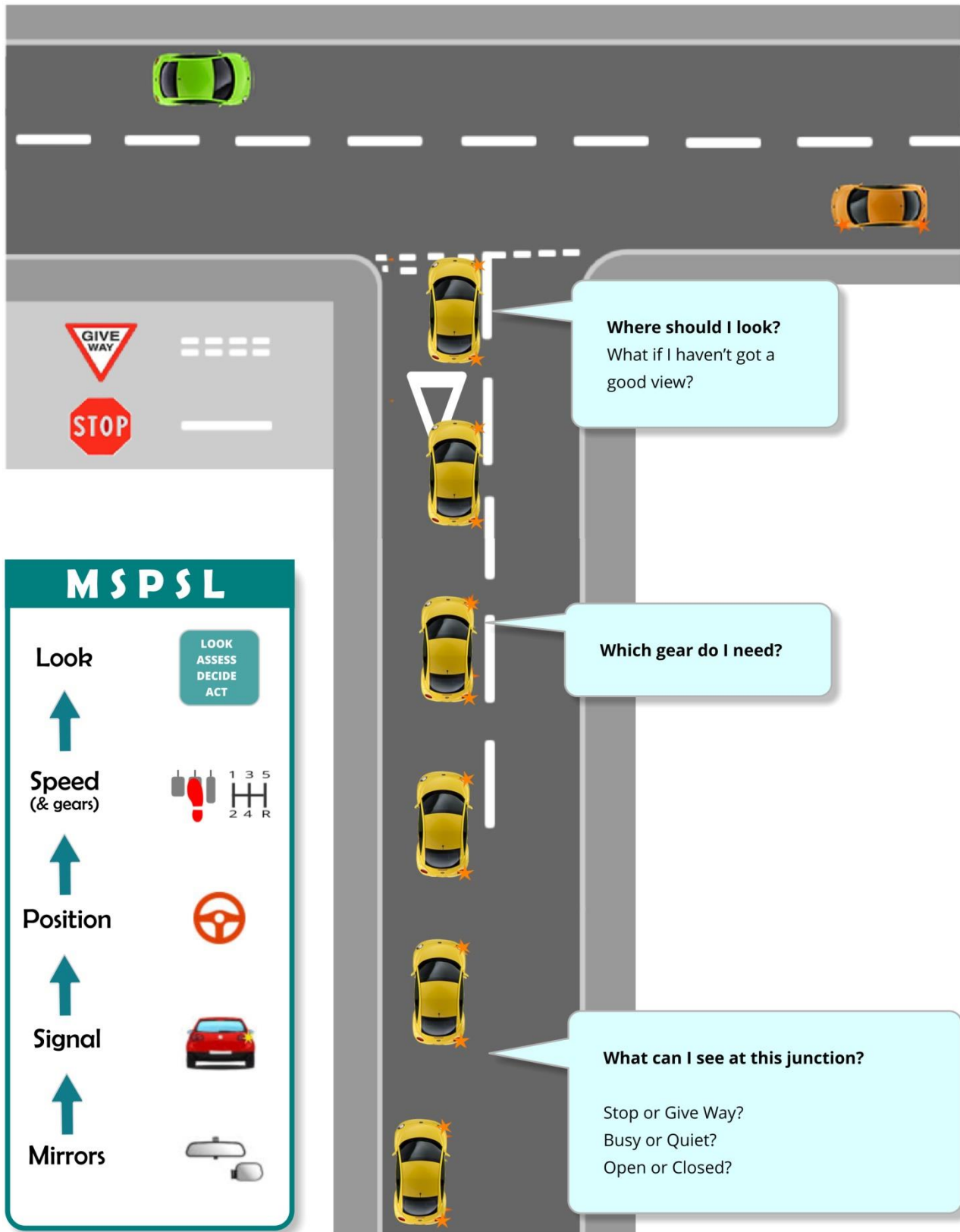
Signal

↑

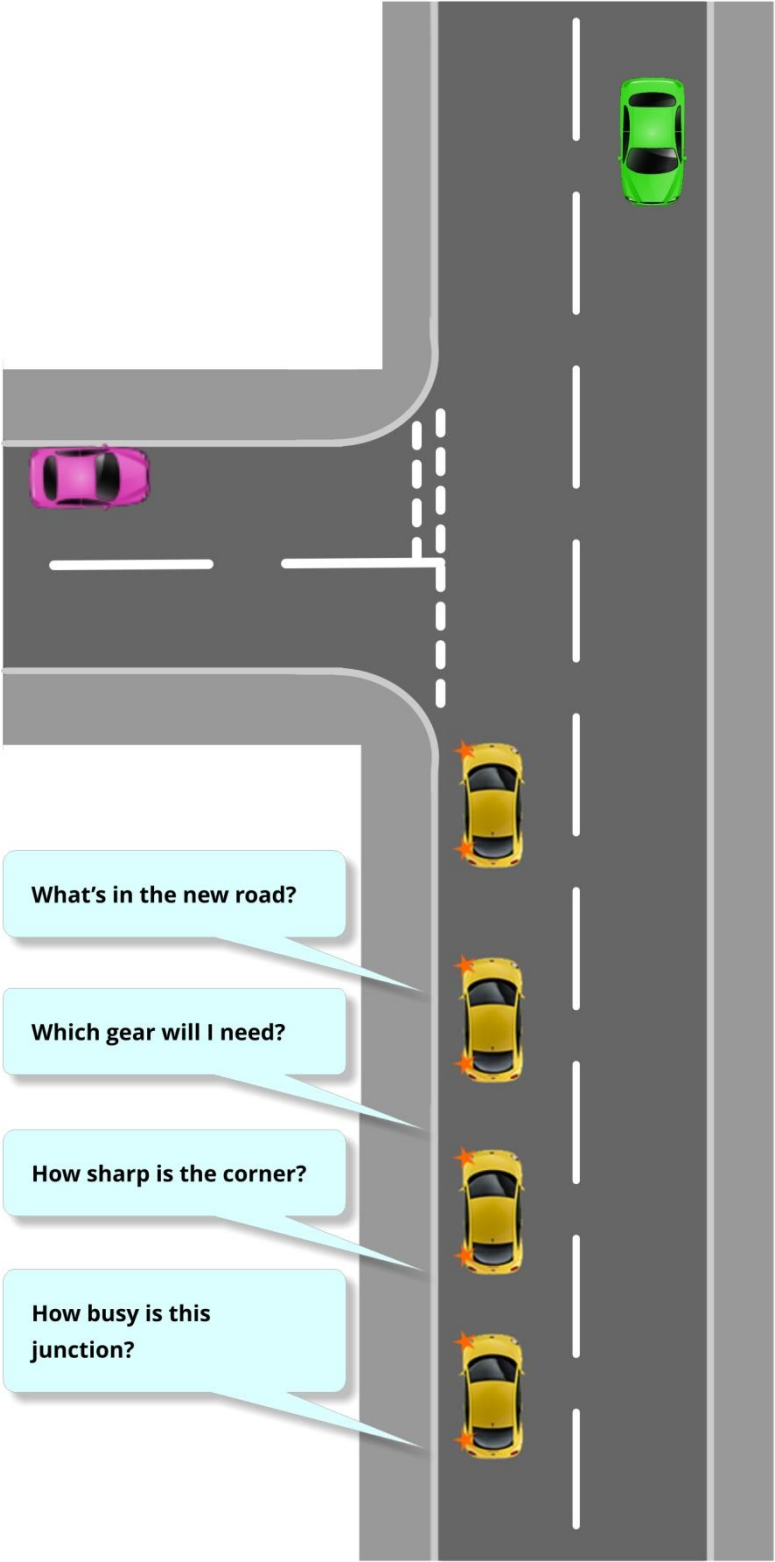
Mirrors

↑

Emerging Right



Turning Left



MSPSL

Look

Speed (& gears)

Position

Signal

Mirrors

LOOK
ASSESS
DECIDE
ACT

Turning Right



MSPSL

Look

↑

Speed
(& gears)

↑

Position

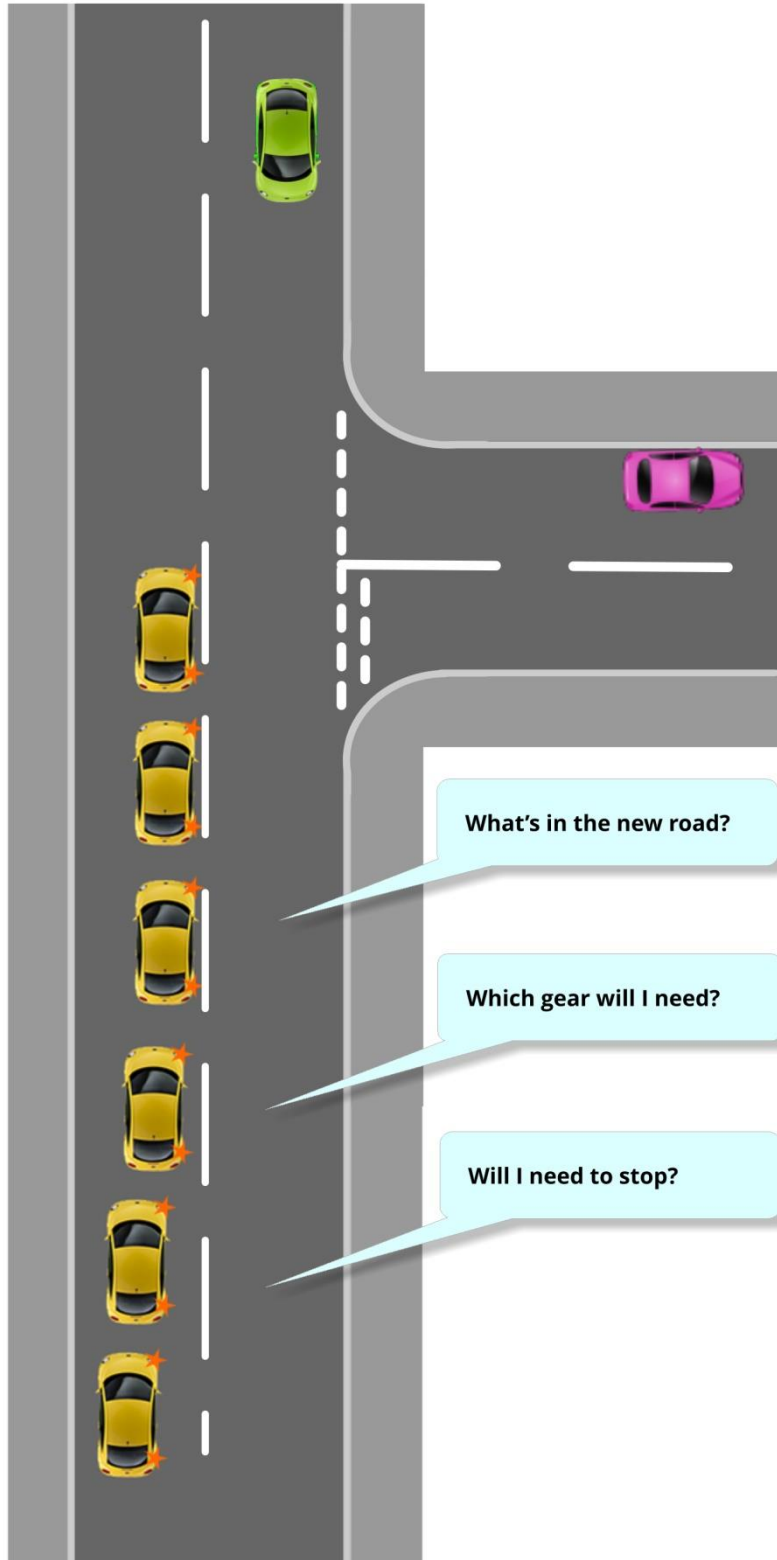
↑

Signal

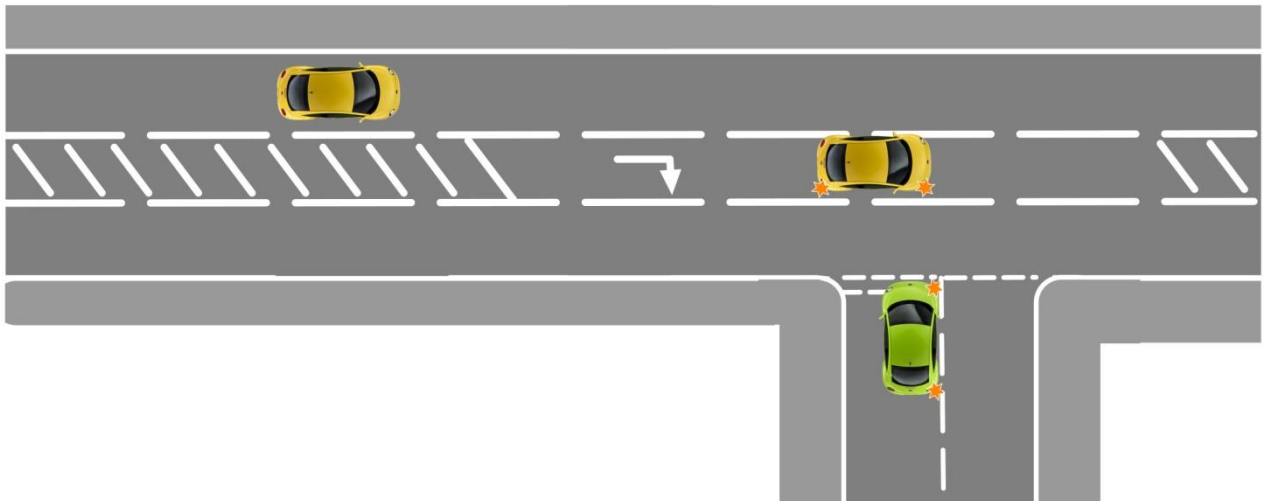
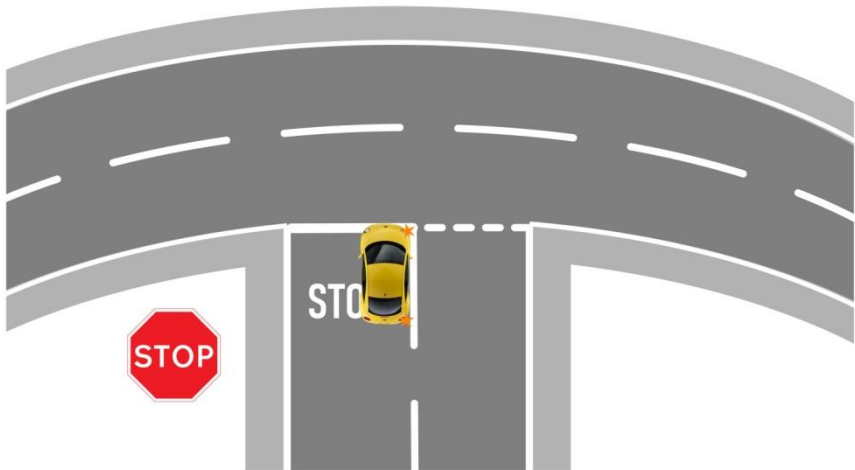
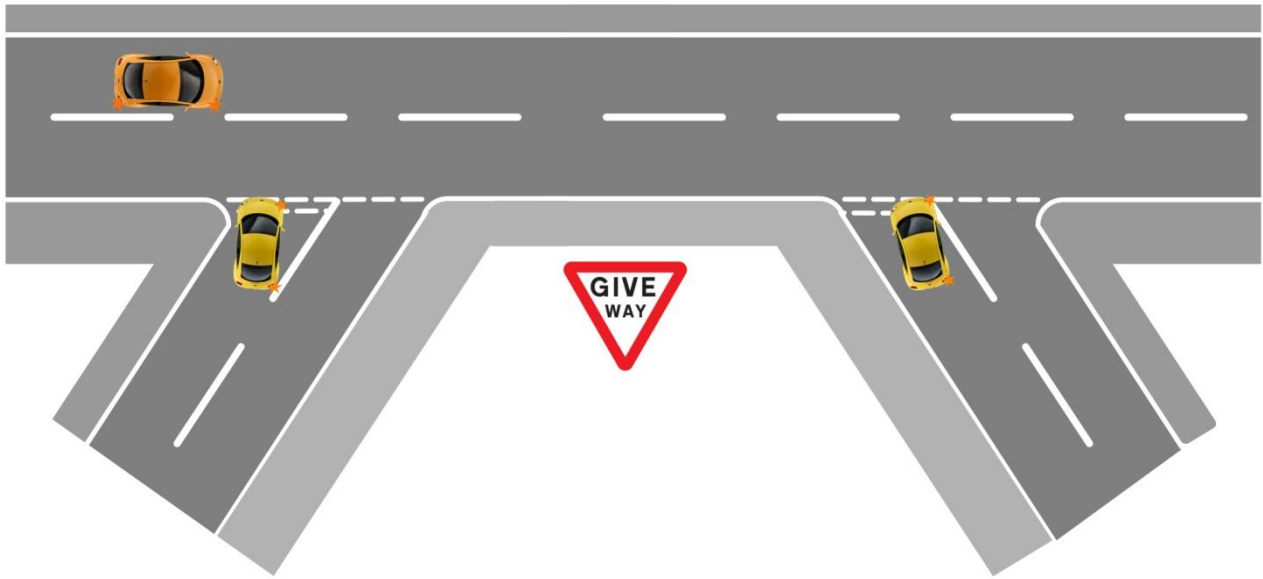
↑

Mirrors

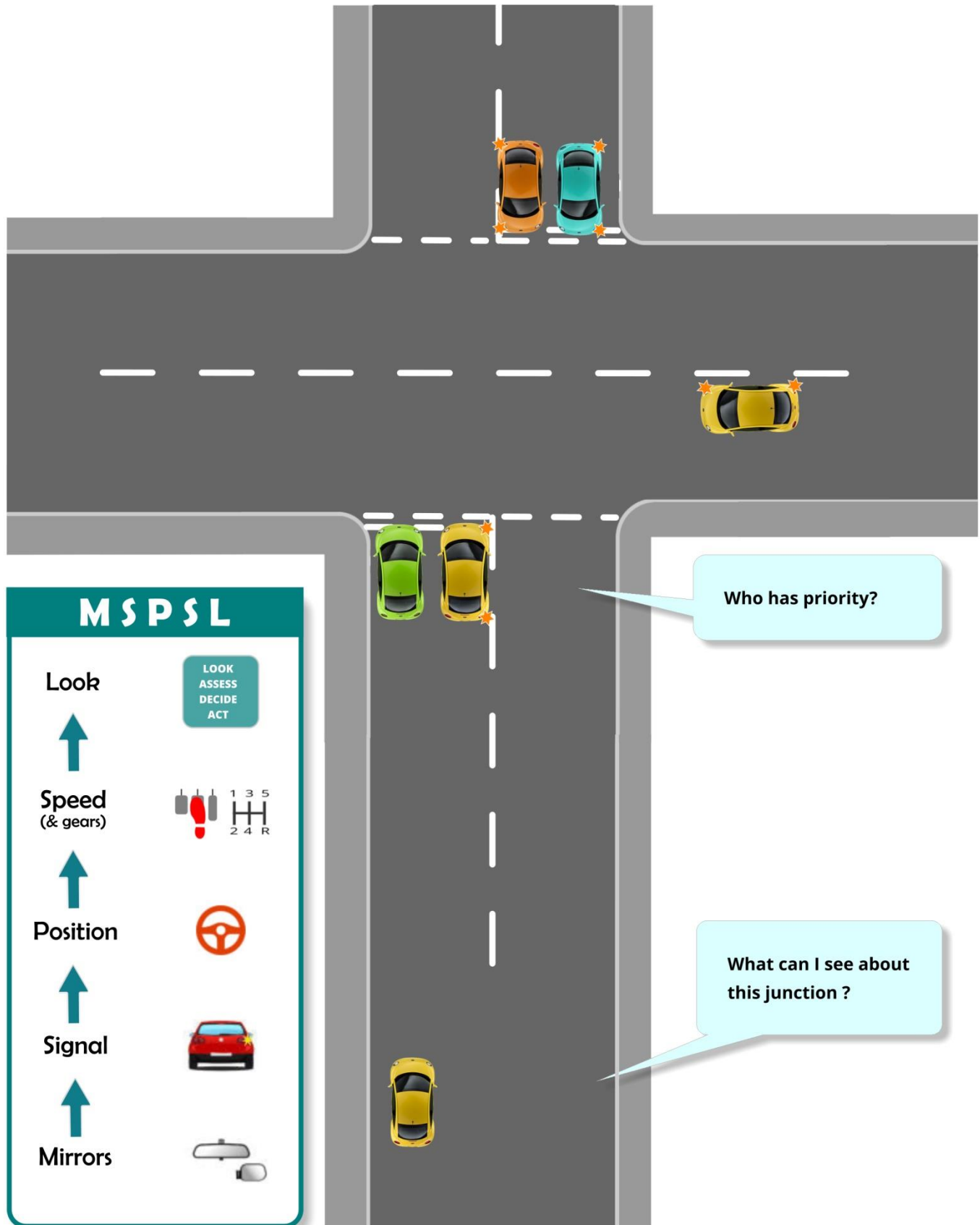
LOOK
ASSESS
DECIDE
ACT



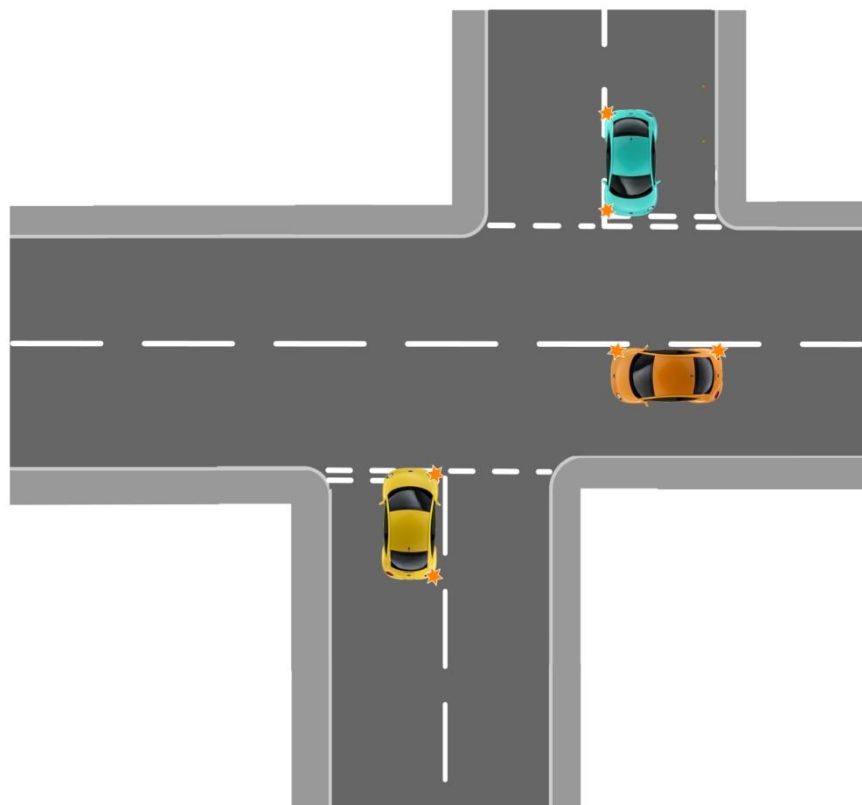
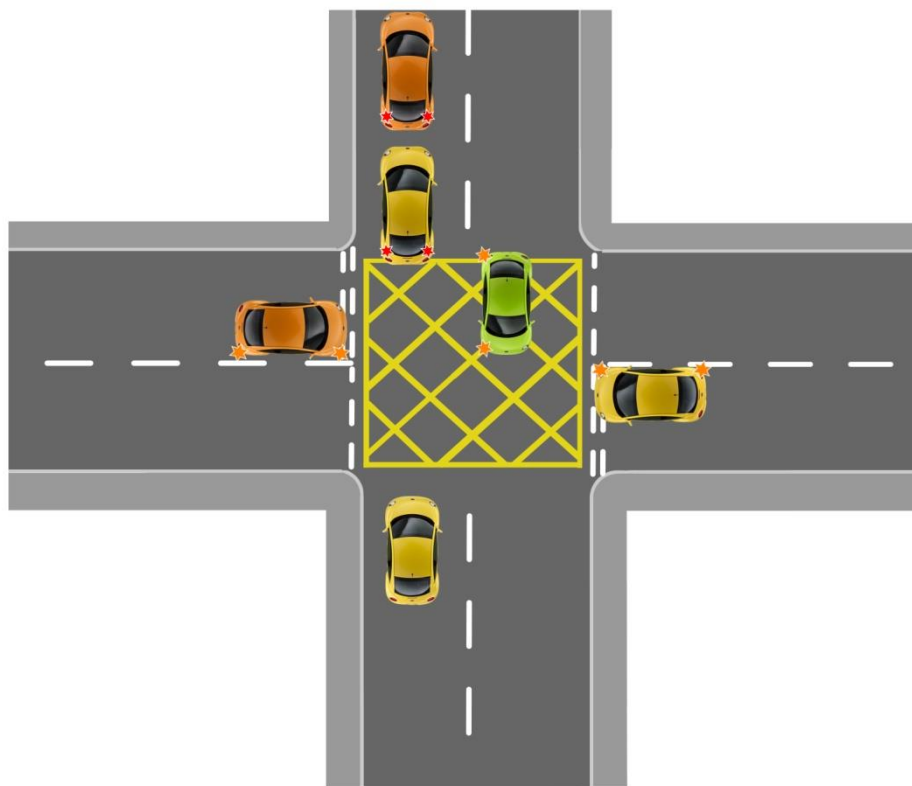
Other Junctions



Crossroads



Other Cross Roads



Traffic Lights

Offside to Offside

Why might this be safer?



MSPSL

Look



Speed
(& gears)



Position



Signal



Mirrors

LOOK
ASSESS
DECIDE
ACT



Is it safe to proceed into the junction?

What is everyone else doing?
What position should I take up?

At what stage am I committed to go even
if the lights change to amber?

What can I see about this junction even
from this far back?

Traffic Lights



Nearside to Nearside
Why might this be necessary?

MSPSL

Look

↑

Speed (& gears)

↑

Position

↑

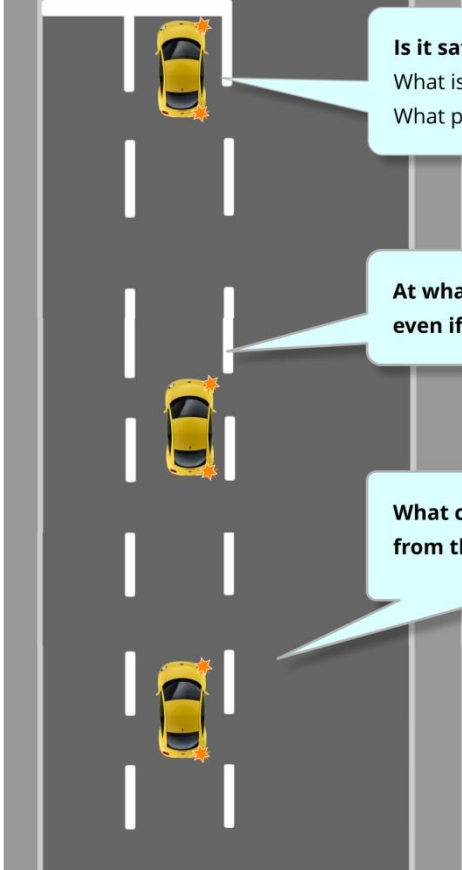
Signal

↑

Mirrors

LOOK ASSESS DECIDE ACT

1 3 5
2 4 R

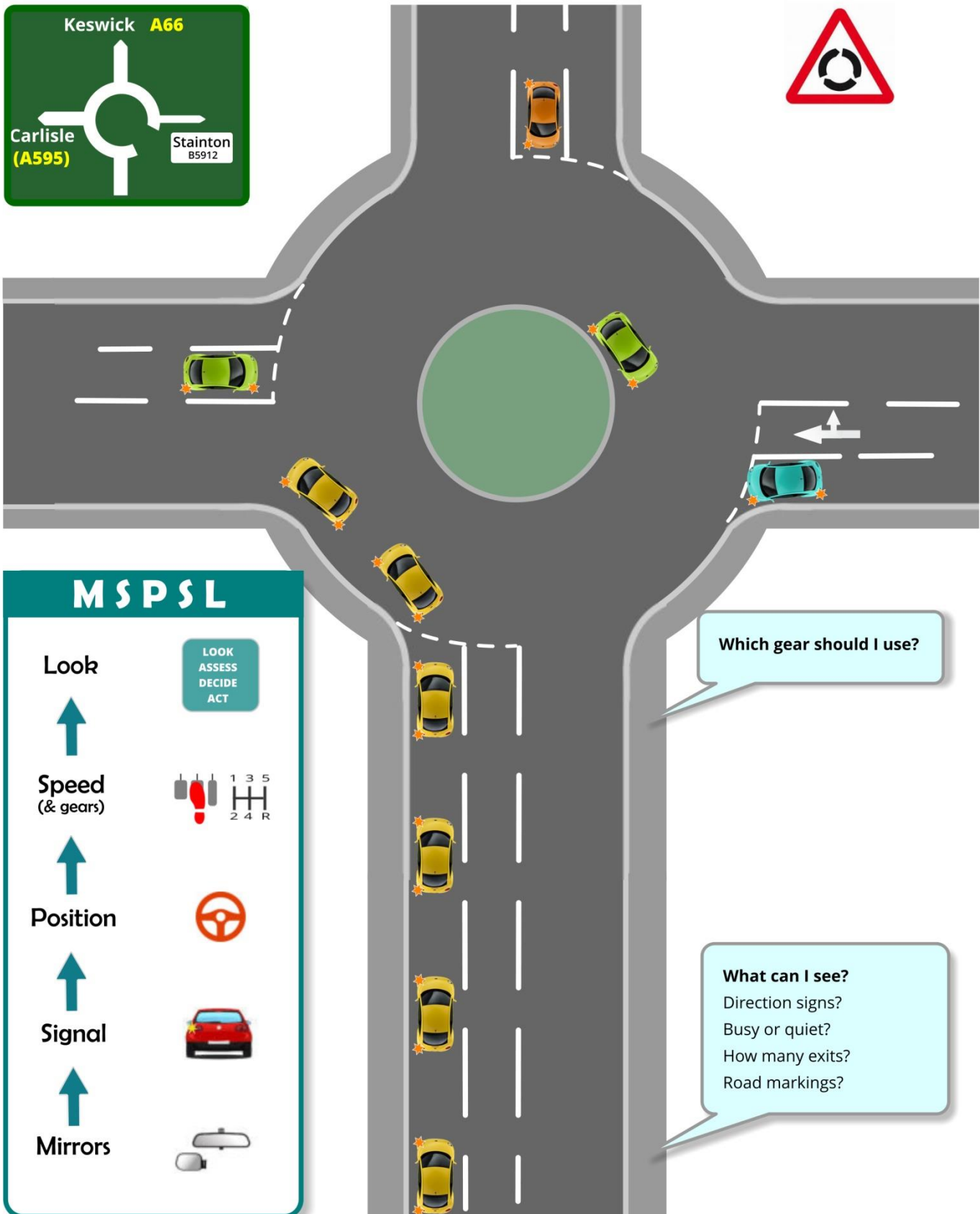


Is it safe to proceed into the junction?
What is everyone else doing?
What position should I take up?

At what stage am I committed to go even if the lights change to amber?

What can I see about this junction even from this far back?

Roundabouts - Left



MSPSL

Look



Speed
(& gears)



Position



Signal



Mirrors

LOOK
ASSESS
DECIDE
ACT

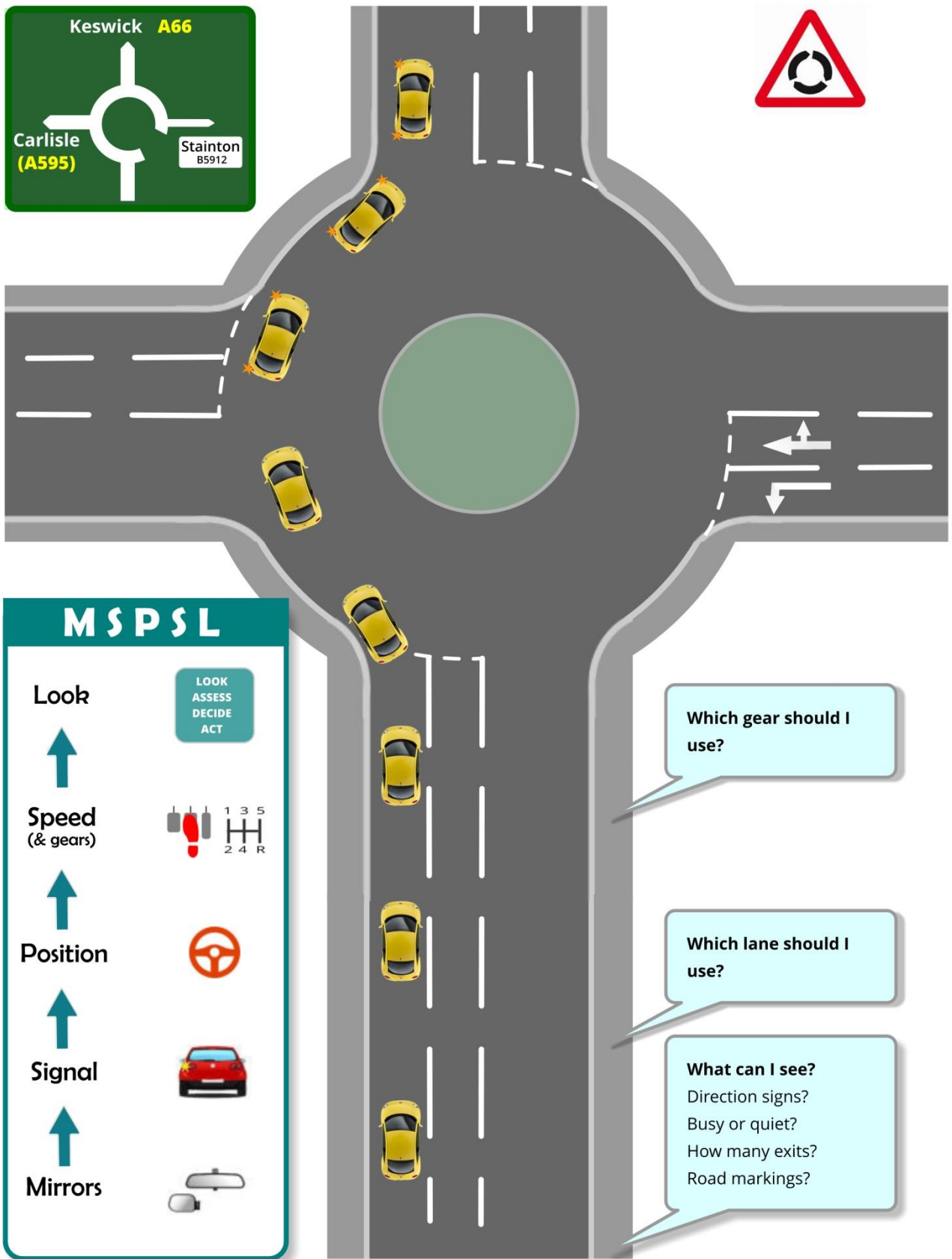


Which gear should I use?

What can I see?

Direction signs?
Busy or quiet?
How many exits?
Road markings?

Roundabouts - Ahead



M S P S L

Look

LOOK
ASSESS
DECIDE
ACT

Speed
(& gears)

Position

Signal

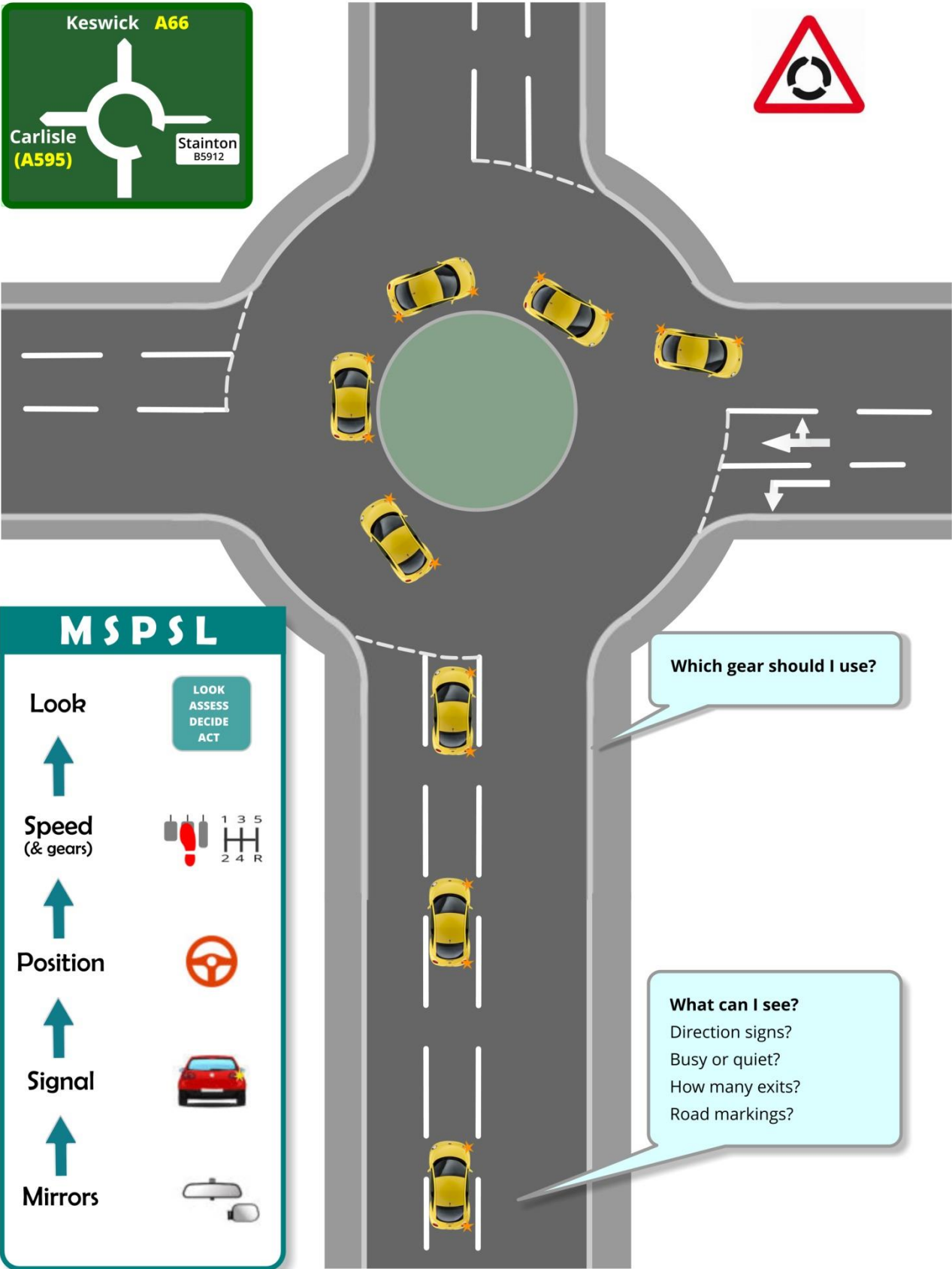
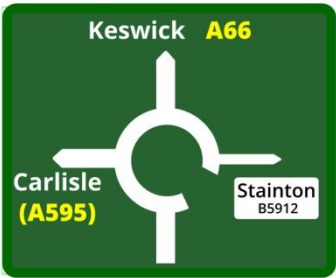
Mirrors

Which gear should I use?

Which lane should I use?

What can I see?
Direction signs?
Busy or quiet?
How many exits?
Road markings?

Roundabouts - Right



MSPSL

Look

↑

Speed (& gears)

↑

Position

↑

Signal

↑

Mirrors

LOOK
ASSESS
DECIDE
ACT

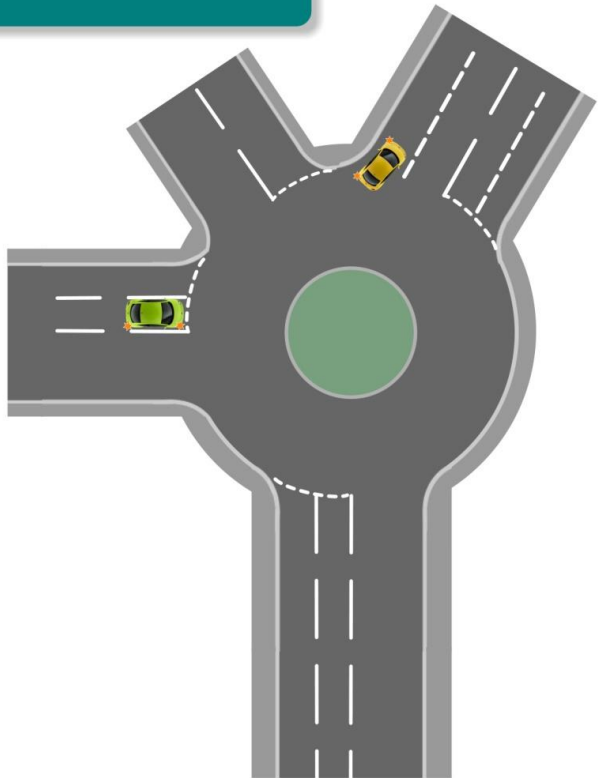
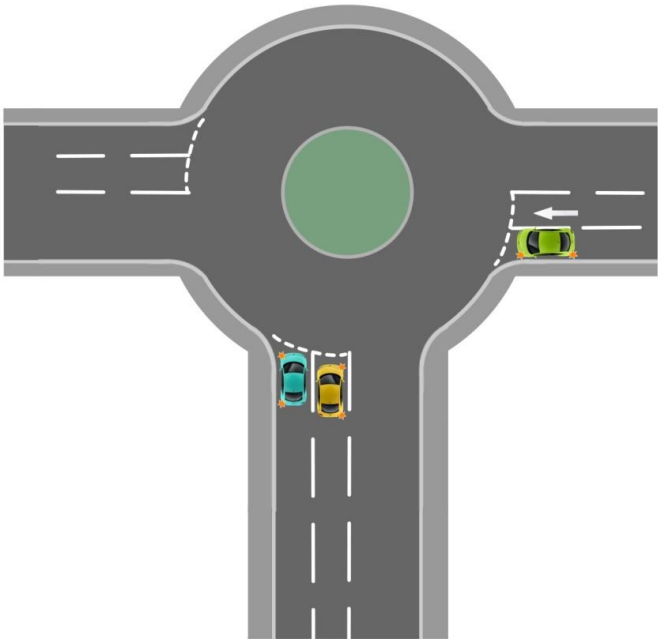
1 3 5
2 4 R

Steering wheel icon

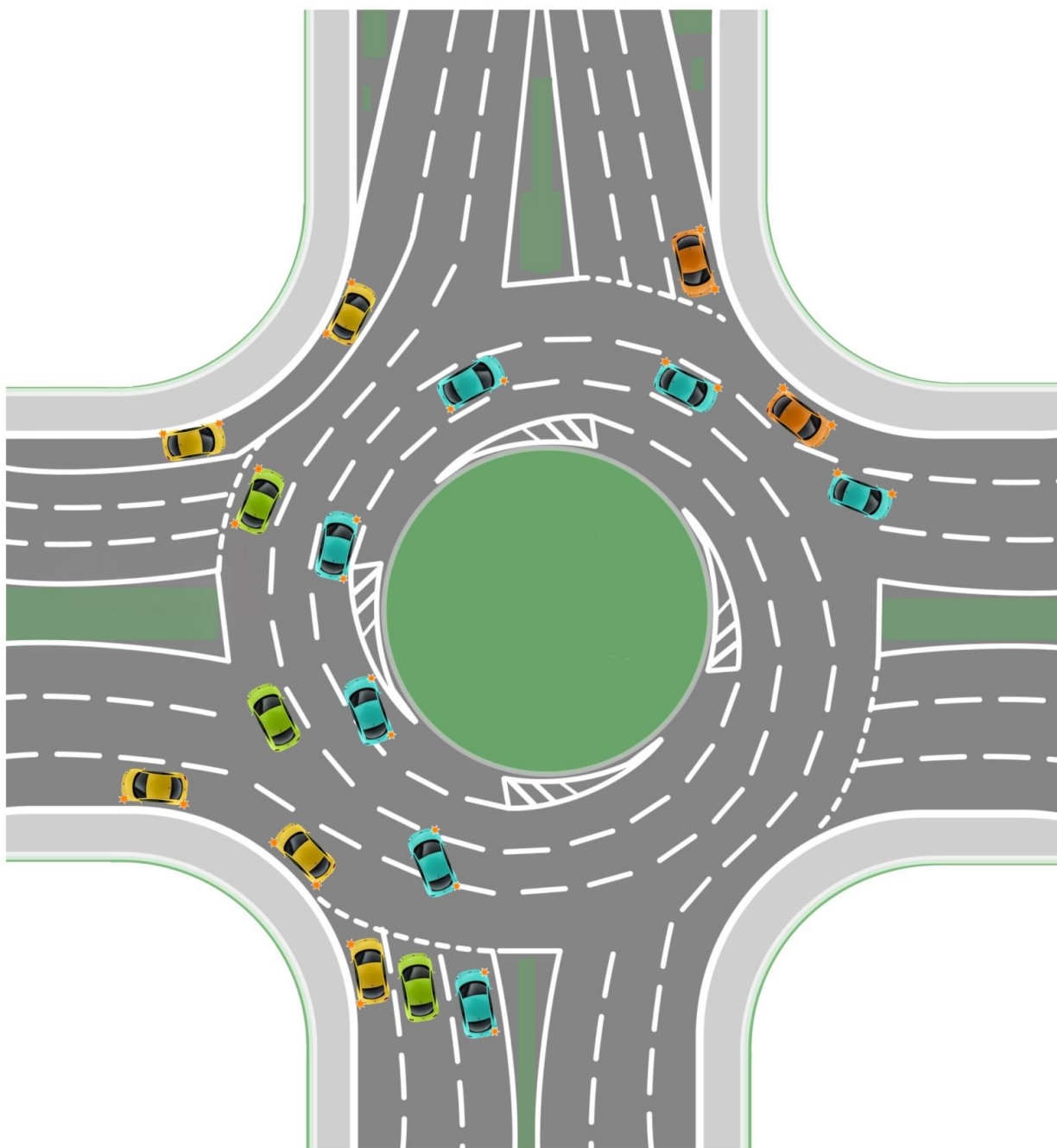
Car icon

Rearview mirror icon

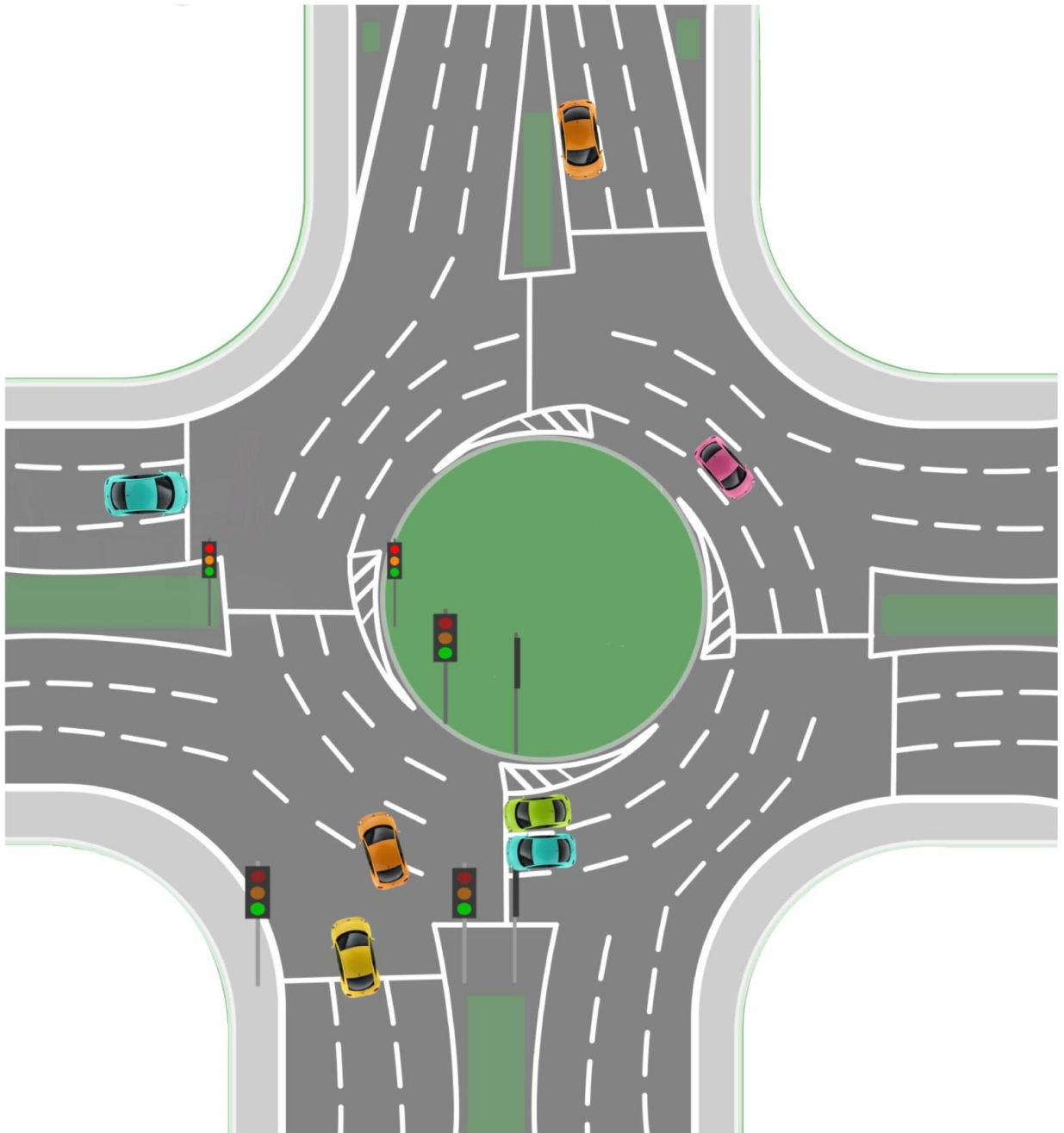
Roundabouts - Others



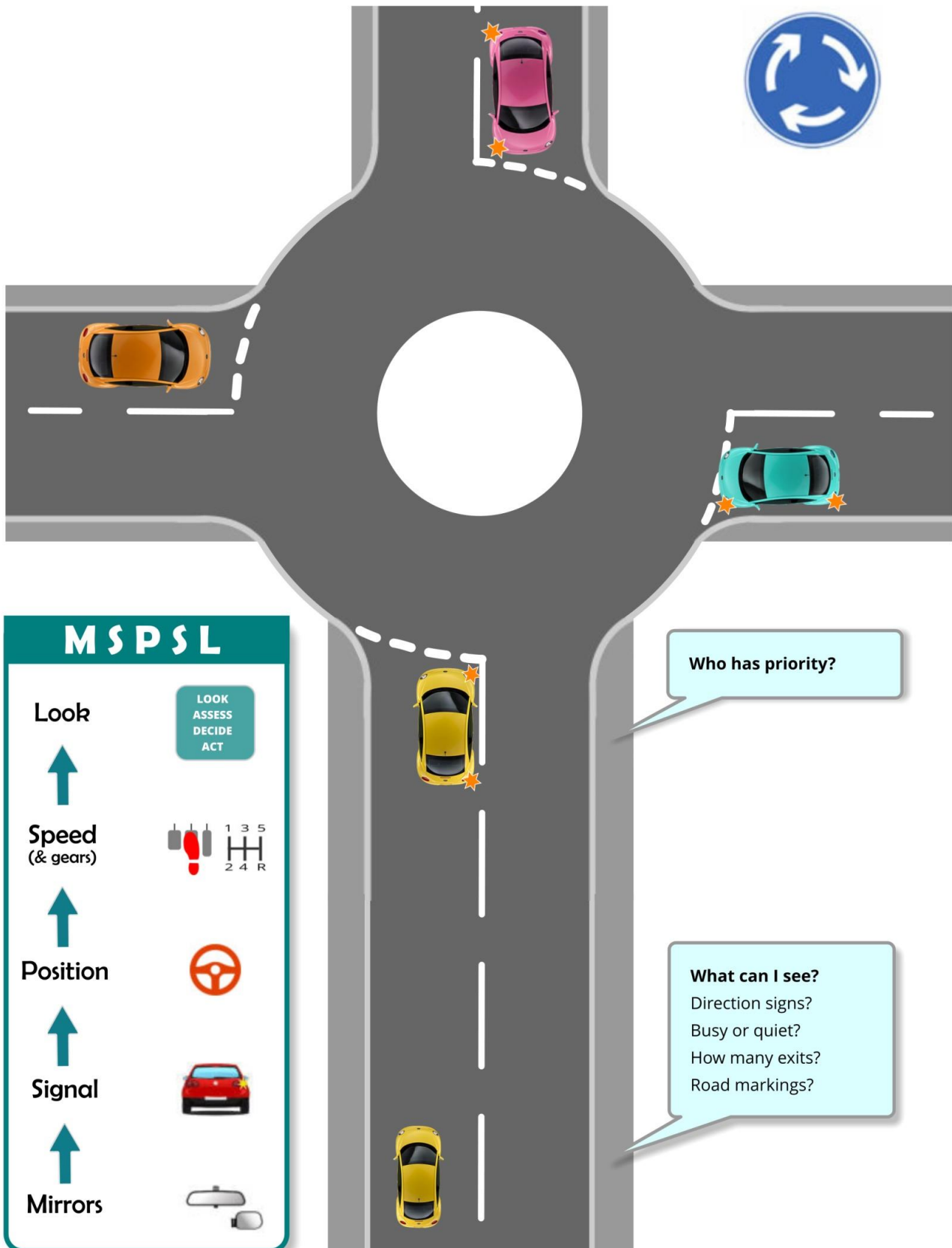
Spiral Roundabout



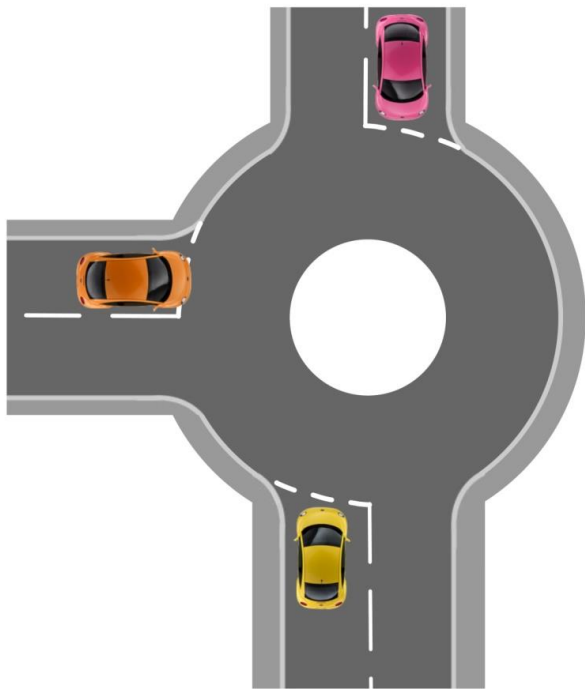
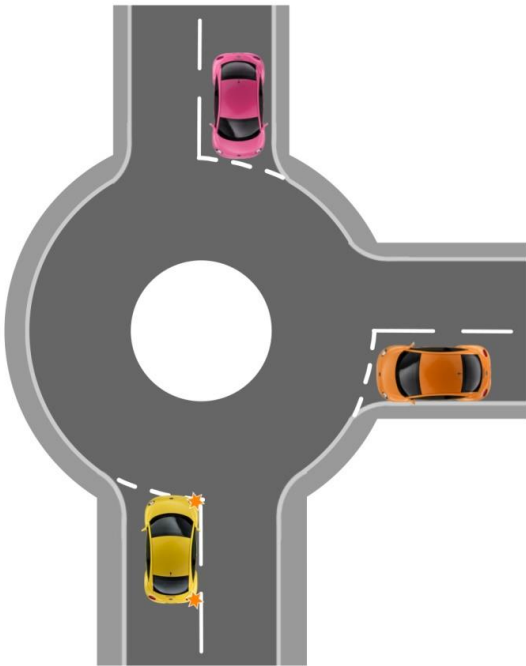
Roundabout Traffic Lights



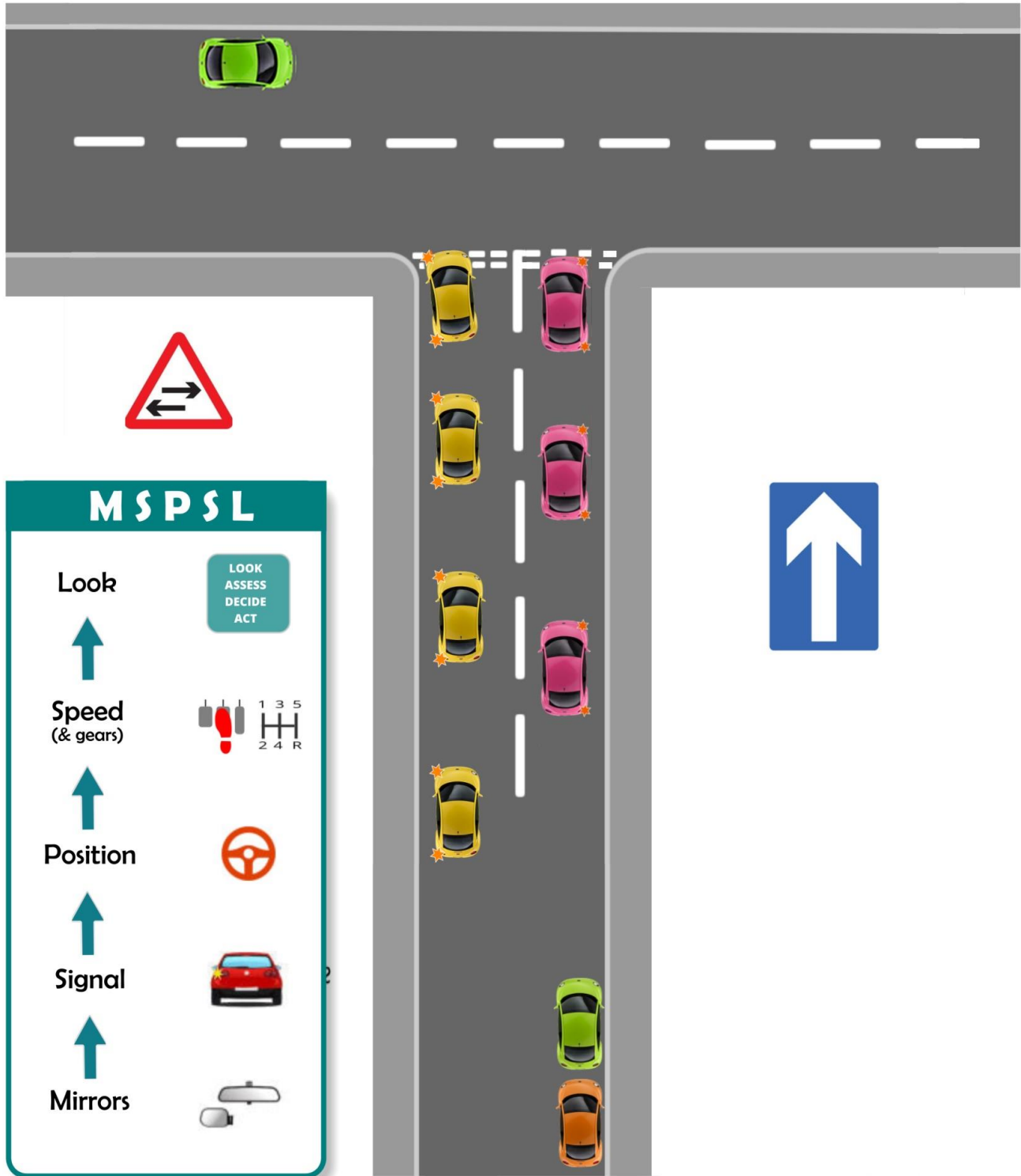
Roundabouts - Mini



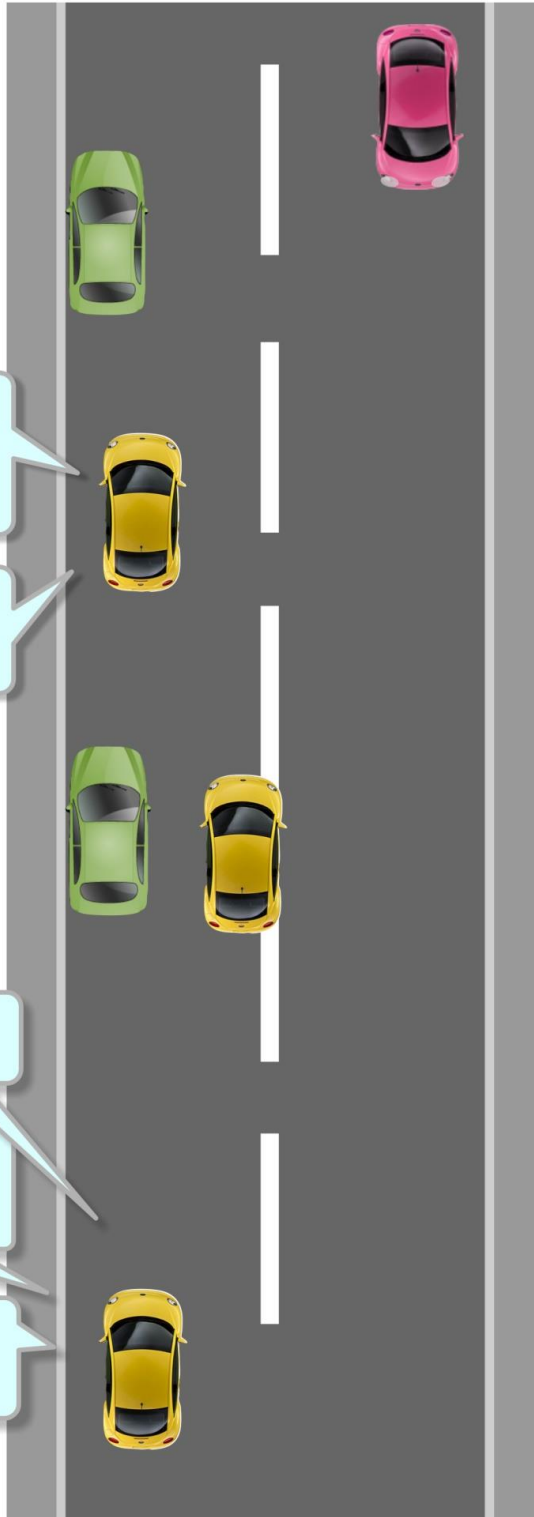
Mini Roundabouts - Others



One Way Streets



Meeting Traffic



Where should I position myself if I need to pull in between two parked cars?

What must I do before I pull away again?

What's happening behind?

Is there room to both get through safely?

How much clearance should I give to the parked cars?

What does it mean if the oncoming driver flashes his lights?

M S P S L

Look



LOOK
ASSESS
DECIDE
ACT

Speed
(& gears)



Position



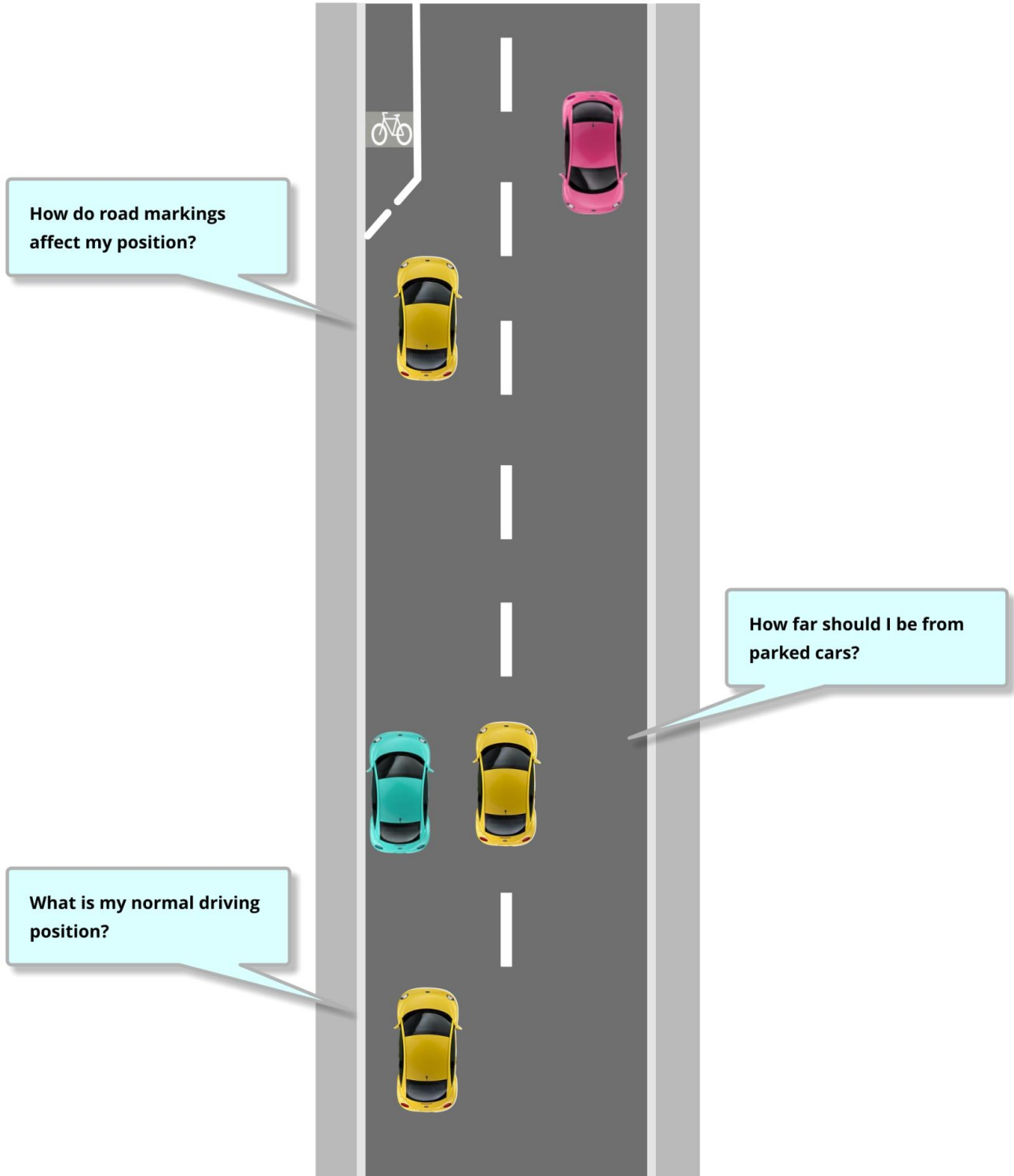
Signal



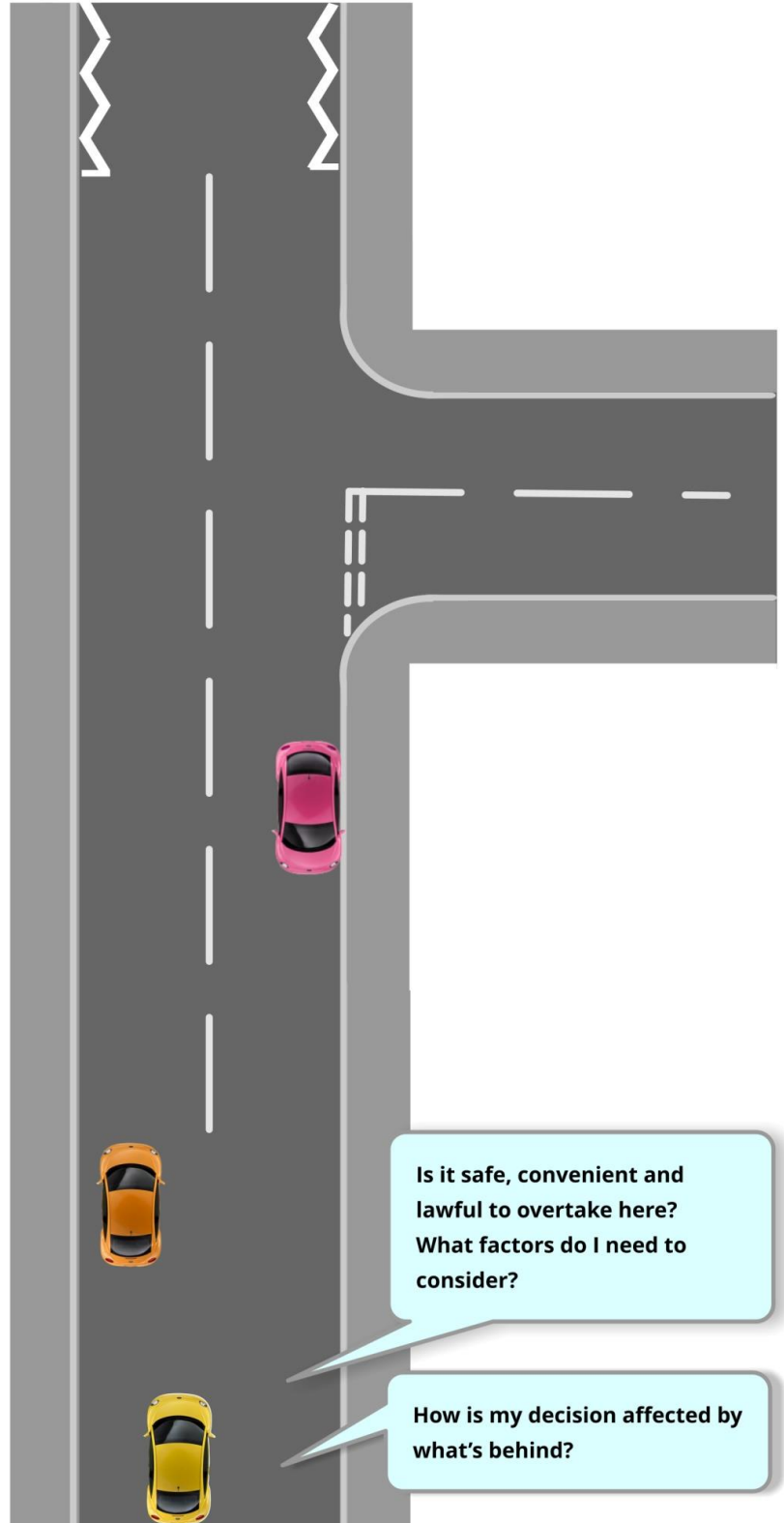
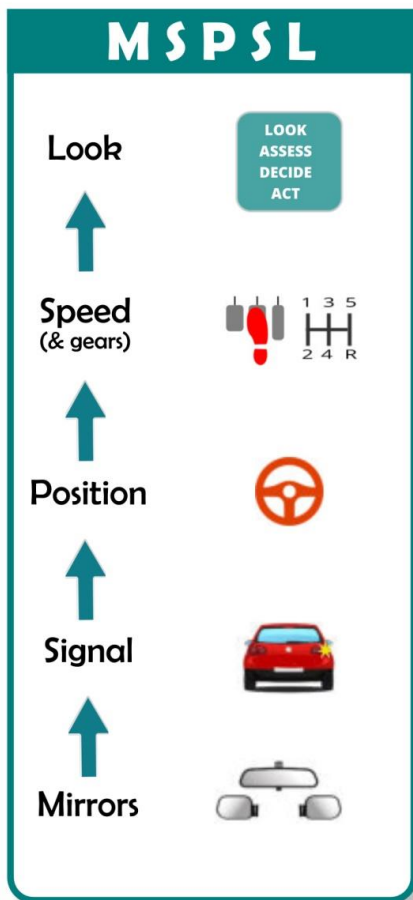
Mirrors



Positioning



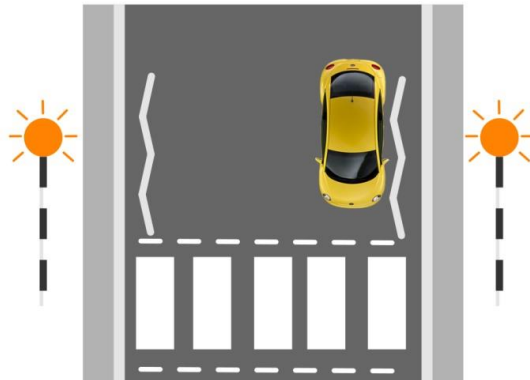
Overtaking



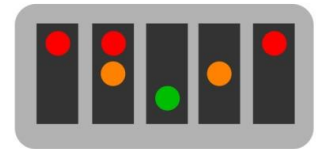
Pedestrian Crossings



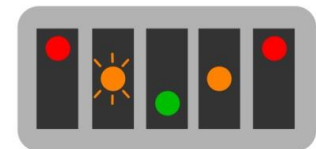
Zebra



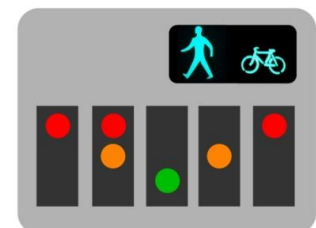
Puffin



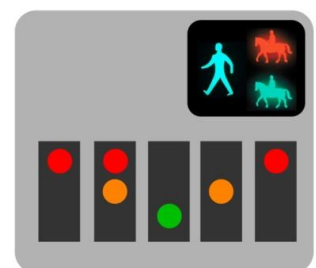
Pelican



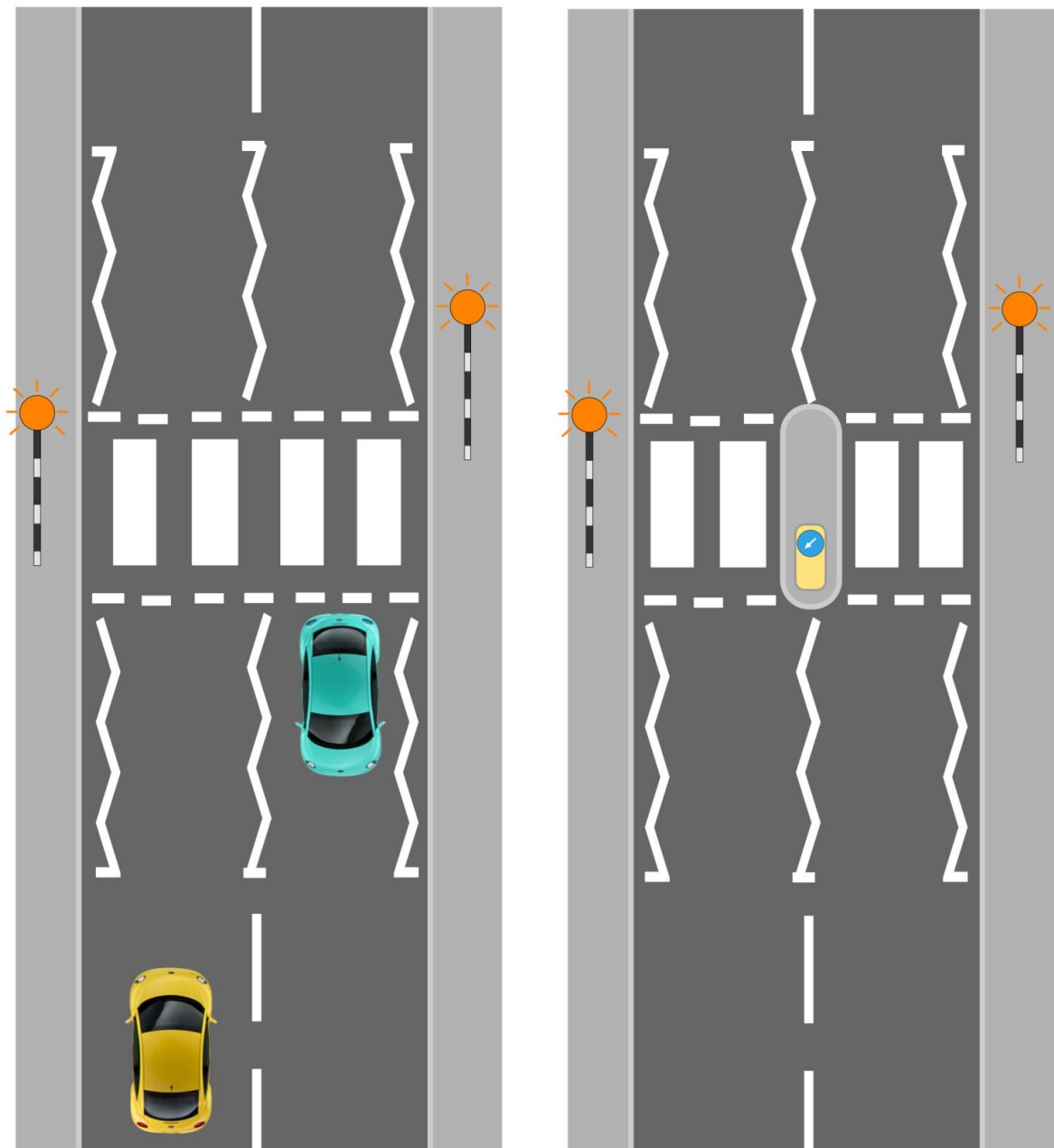
Toucan



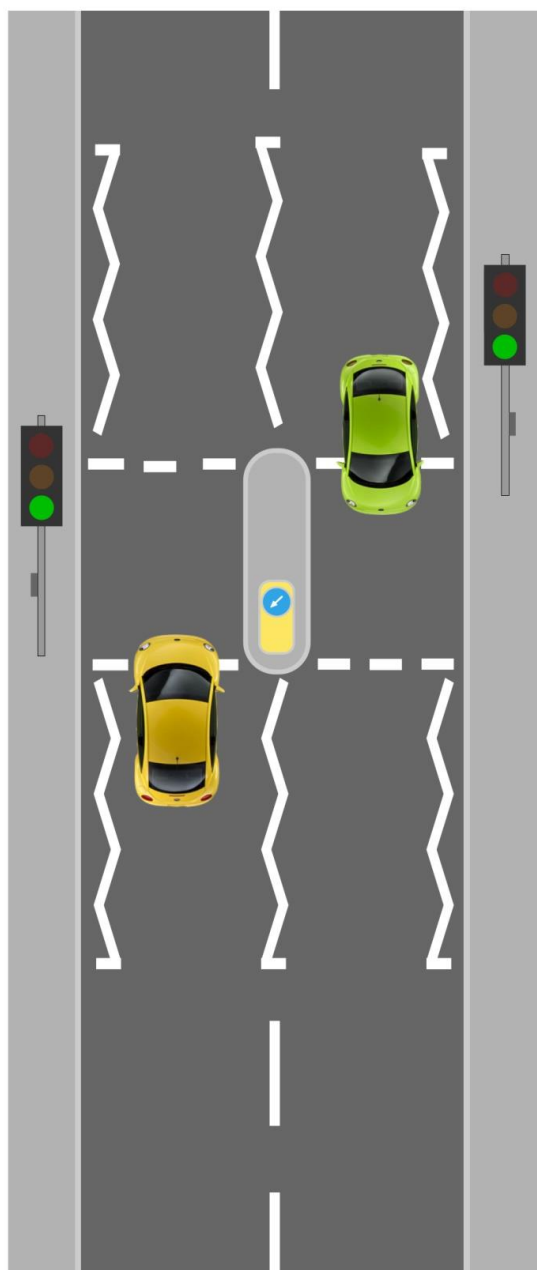
Pegasus/Equine



Zebra Crossings



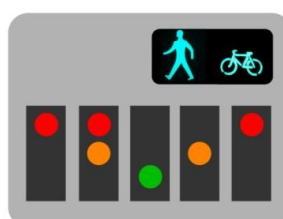
Light Controlled Crossings



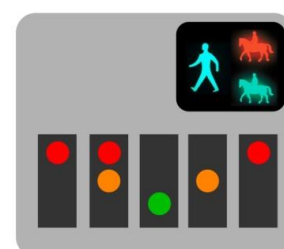
Pelican



Puffin

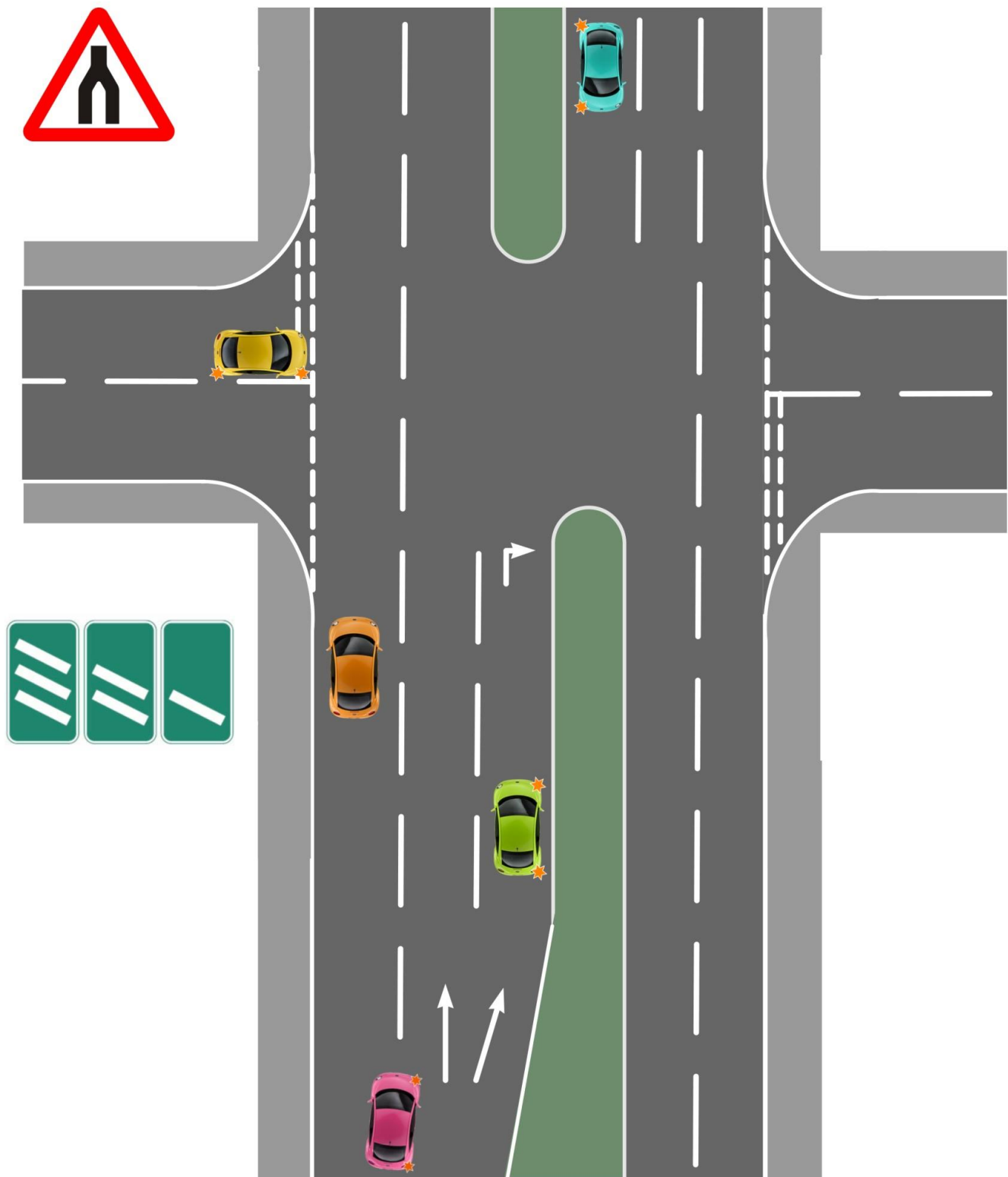


Toucan

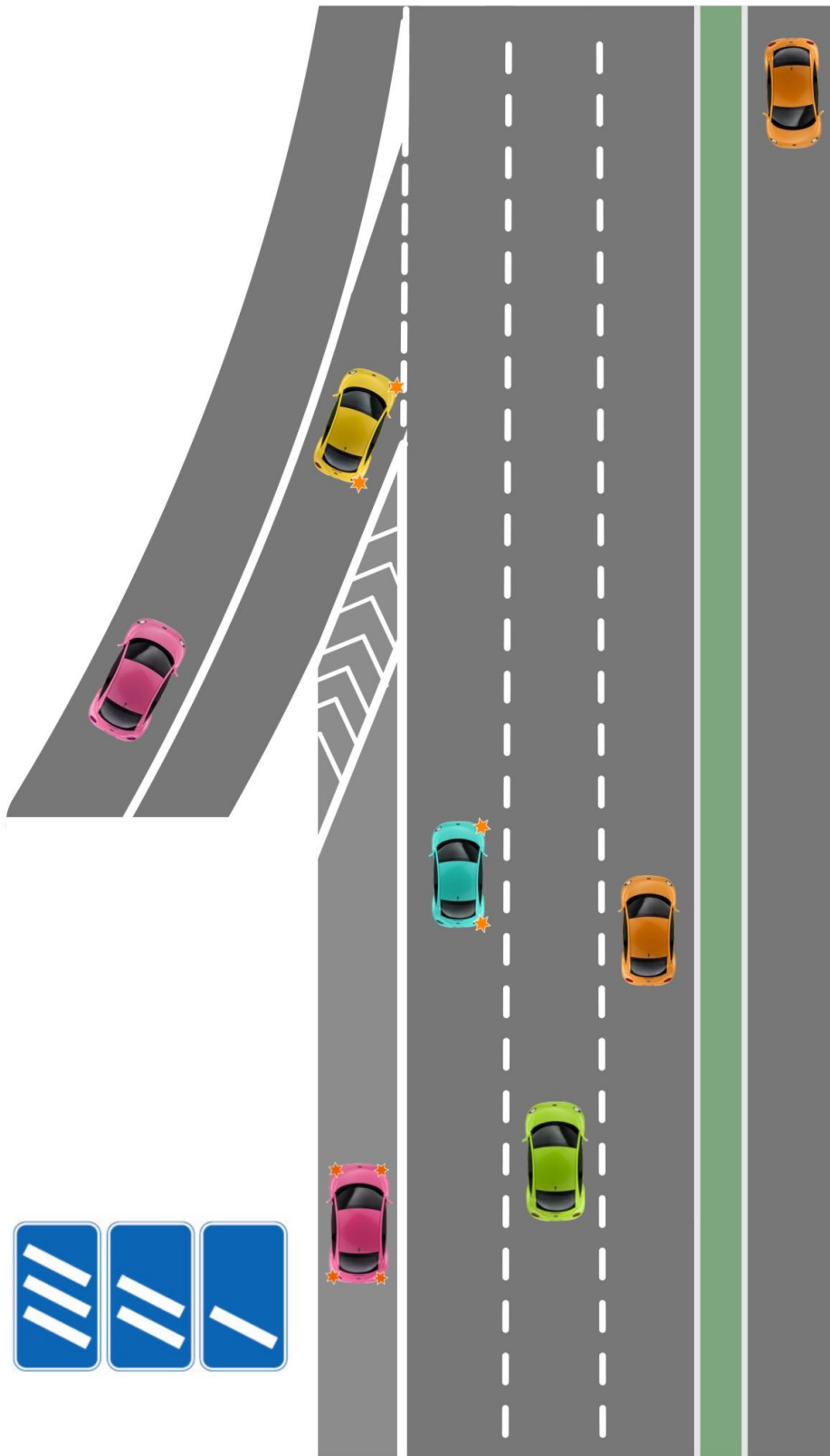


Pegasus/Equine

Dual Carriageways



Motorways



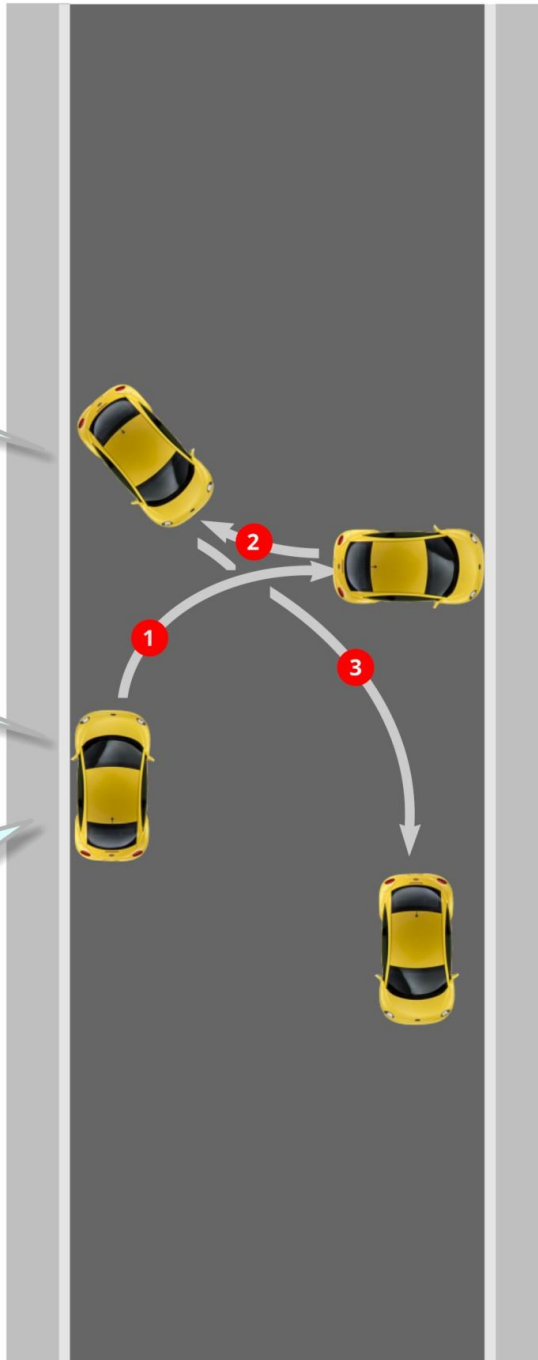
Turn in the Road

What should I do if someone is coming?

Is this a safe convenient and lawful place?

How will the slope of the road affect the speed of the car?

Where should I be looking?

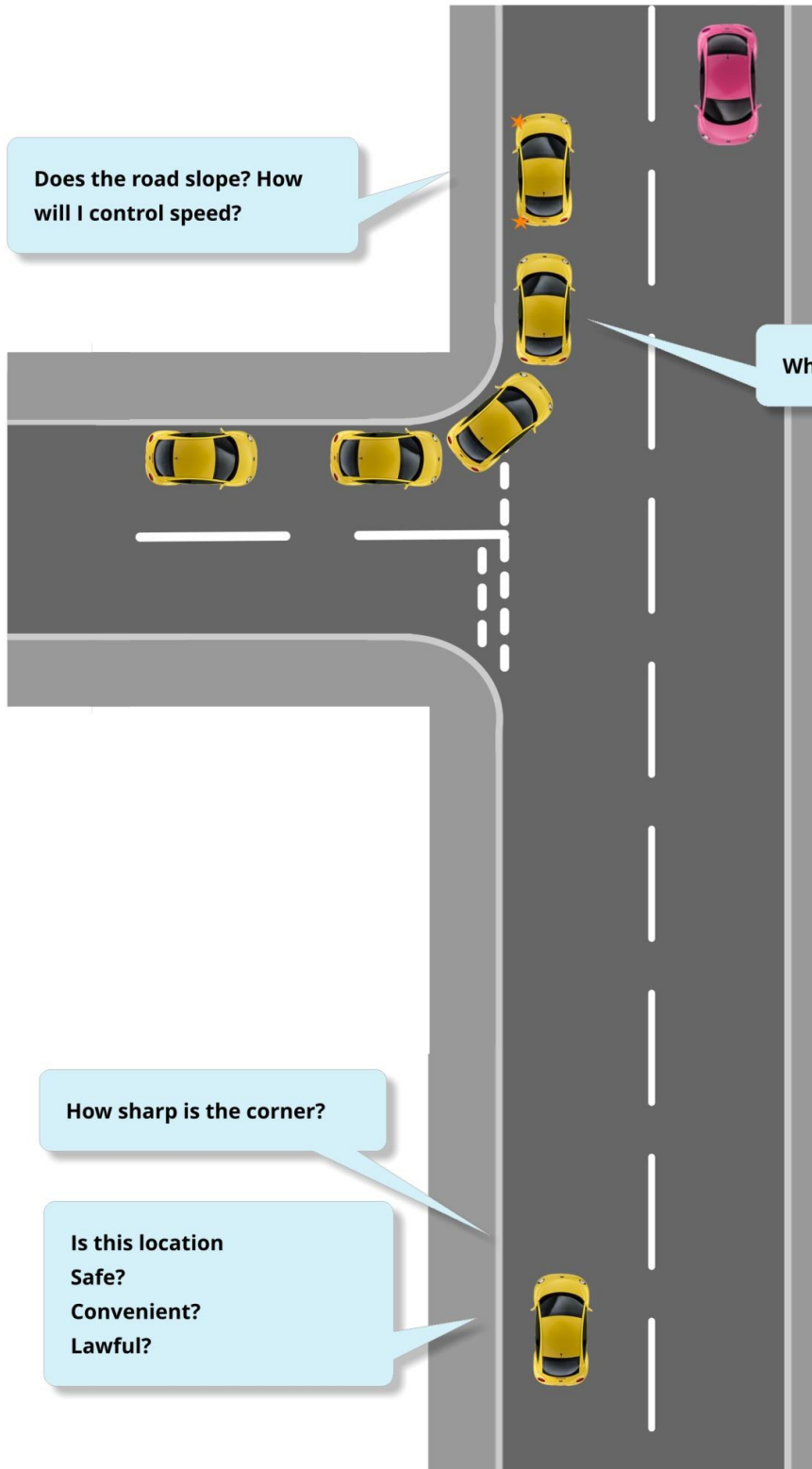


Manoeuvre

Observation

Preparation

Reverse Left



Preparation

Observation

Manoeuvre

M S P S L

Look



LOOK
ASSESS
DECIDE
ACT

Speed
(& gears)



Position



Signal



Mirrors



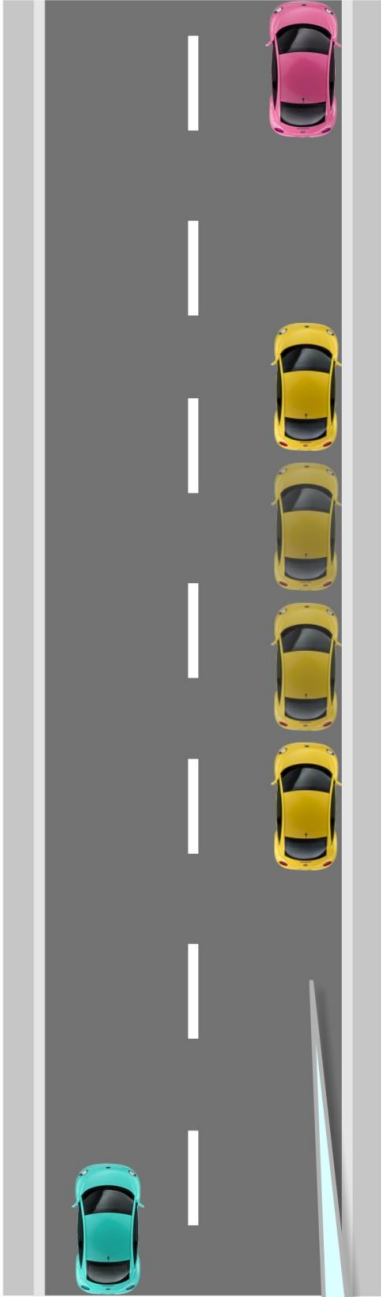
Pull up on Right & Reverse

Pull up on right



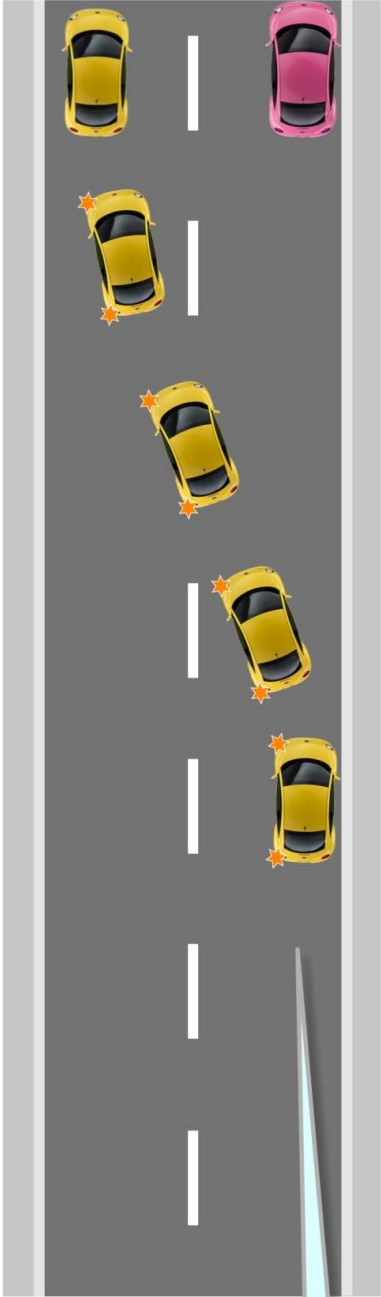
Where is a suitable place?
Is there oncoming traffic?
M-S-P-S-L

Reverse 2 car lengths



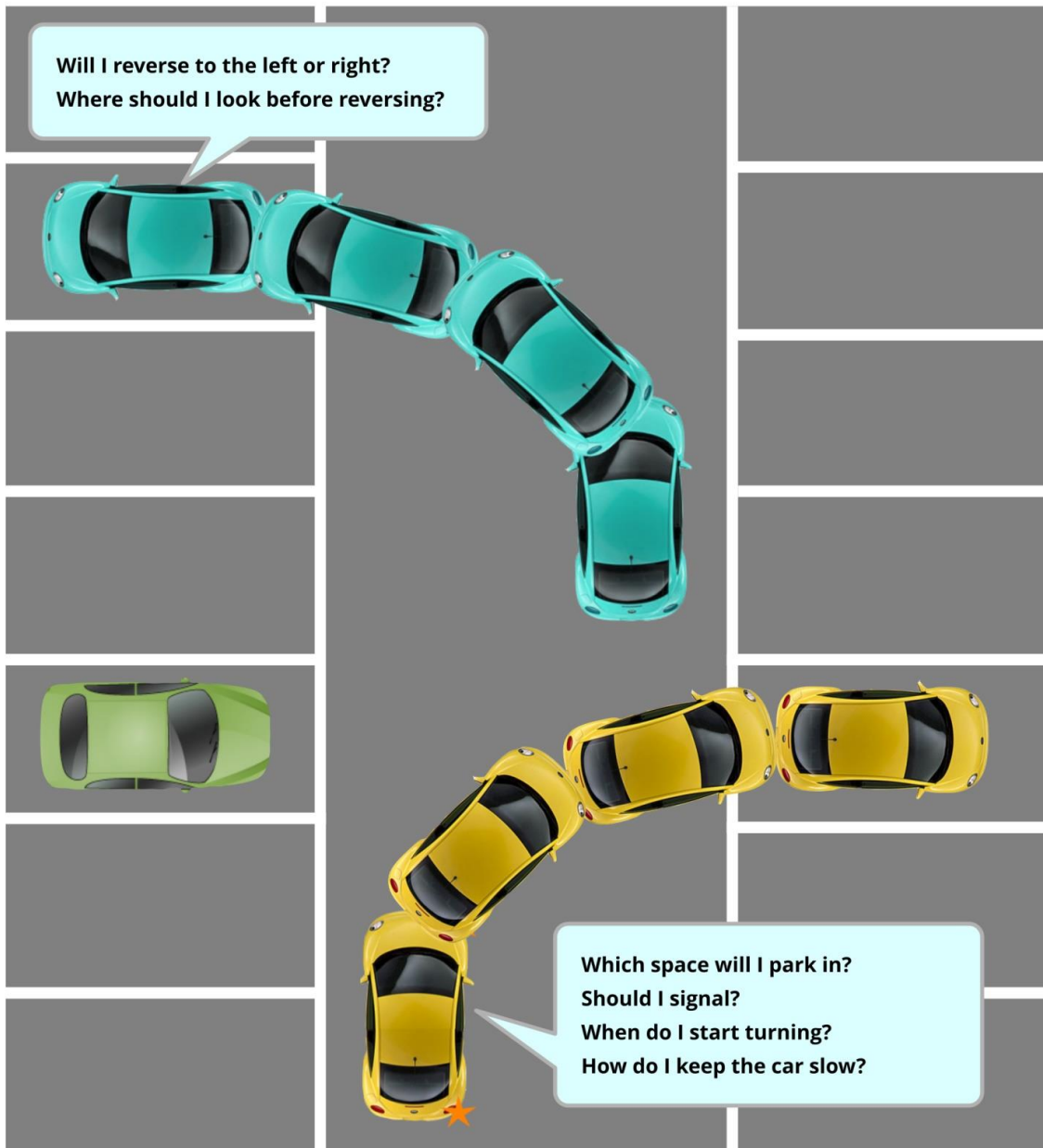
Where do I need to look?
How do I control my speed?
P-O-M

Pull away safely



Where should I look?
Is it safe?
P-O-M

Forward Bay Park



Mirrors

Signal

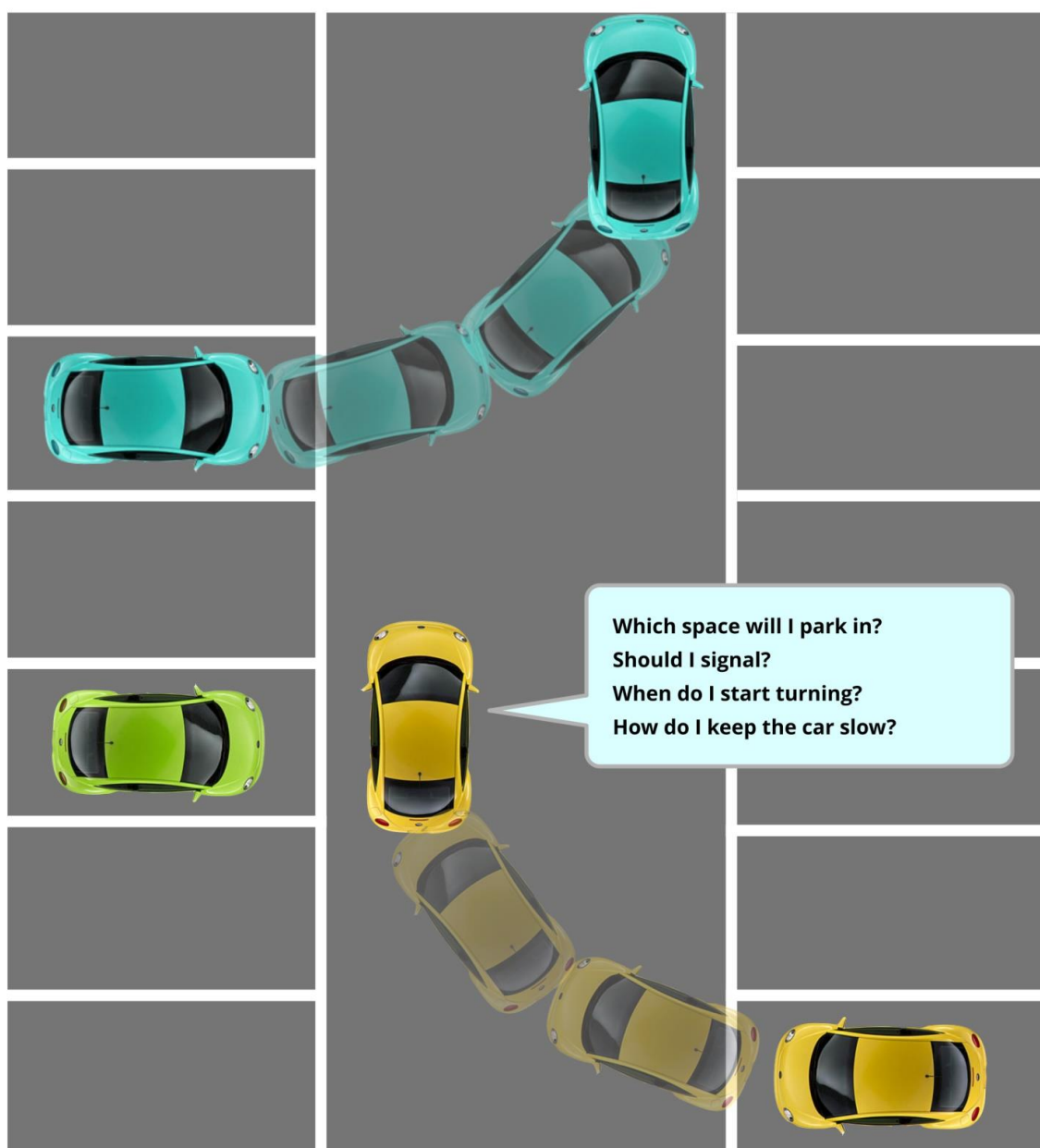
Position Speed Look

Preparation

Observation

Manoeuvre

Reverse Bay Park



Mirrors

Signal

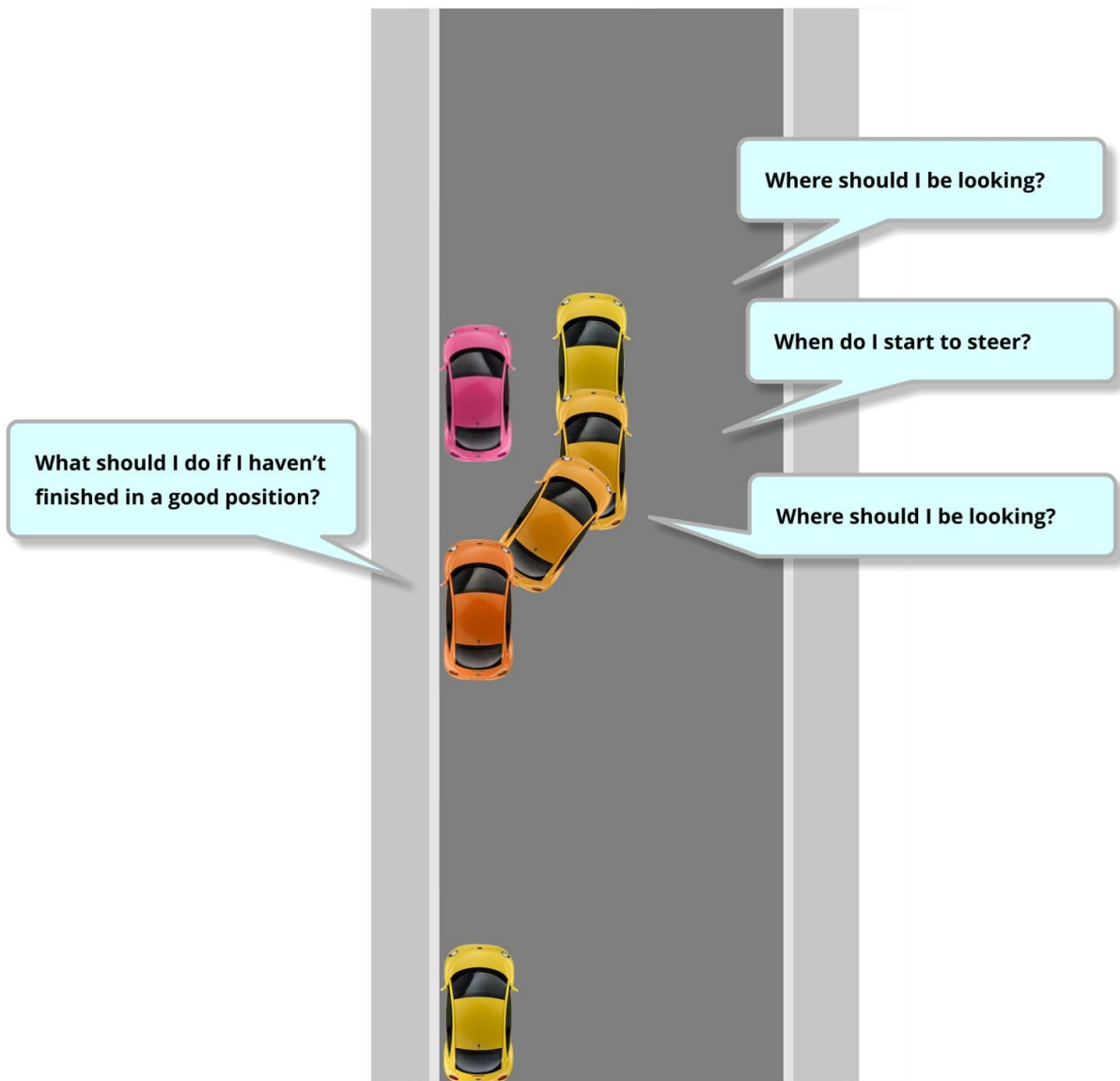
Position Speed Look

Preparation

Observation

Manoeuvre

Parallel Park



Mirrors

Signal

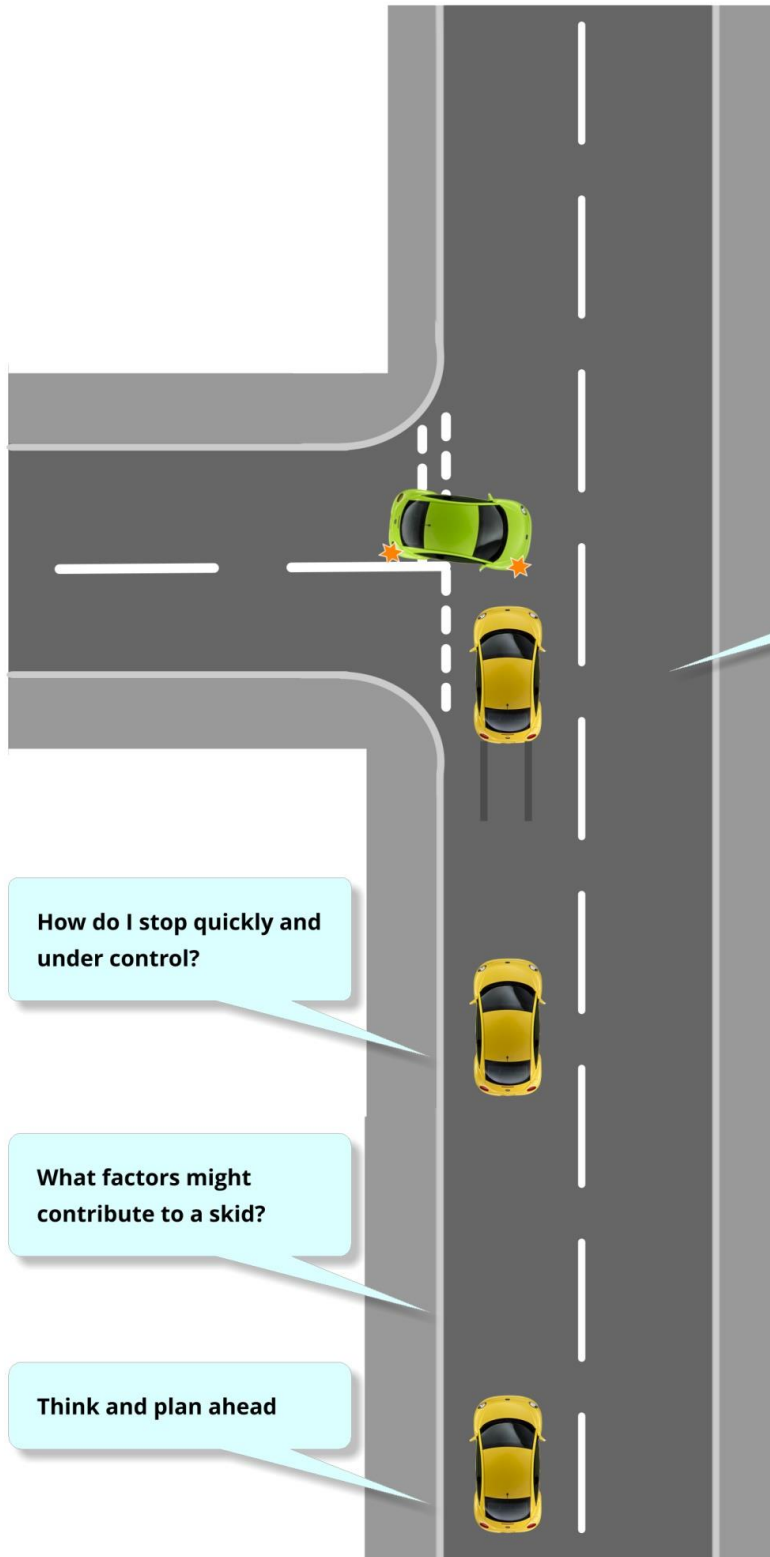
Position Speed Look

Preparation

Observation

Manoeuvre

Emergency Stop



What do I do if I skid?

How do I stop quickly and under control?

What factors might contribute to a skid?

Think and plan ahead

Road Signs and Road Markings



Warning



Orders - Must Not



Orders - Must



Road Works



Primary
Routes



Local and non-
Primary Routes



Motorways

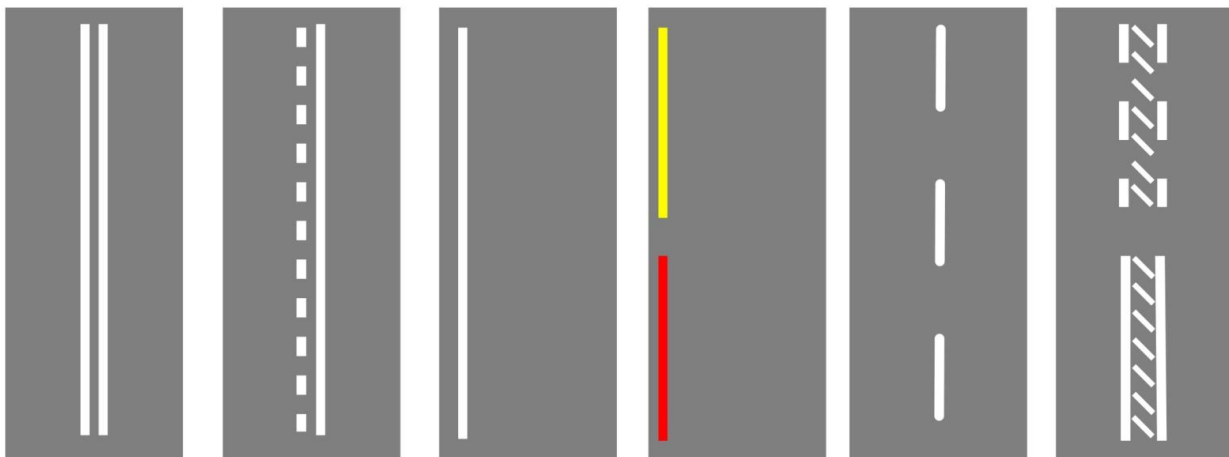


Stop

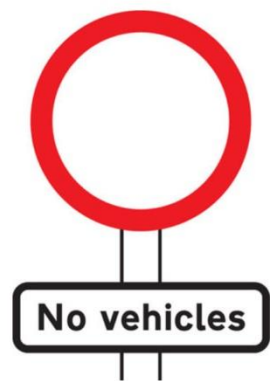
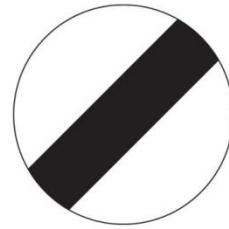
Give Way

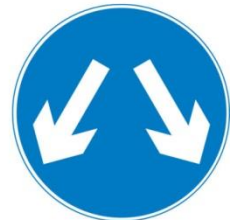


Box Junction



Road & Traffic Signs









No footway
for 400 yds

Safe height
16'-6" (5.0 m)



Ice

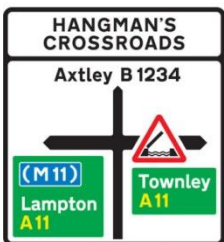
Queues
likely

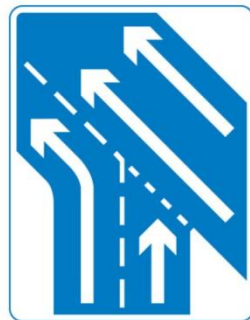
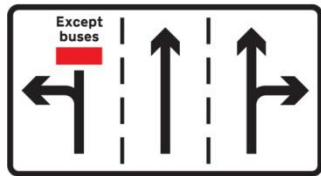
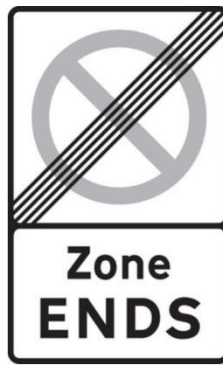
Humps for
1/2 mile

Hidden dip

Soft verges
for 2 miles

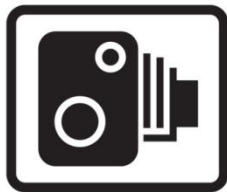




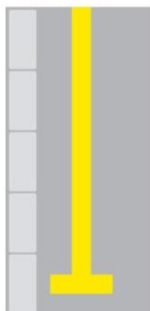
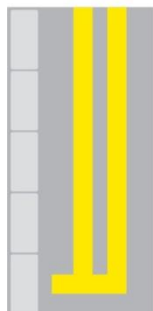
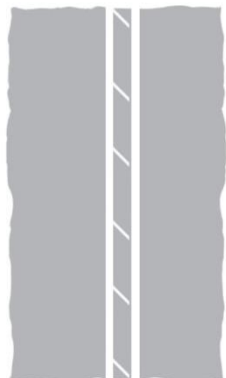
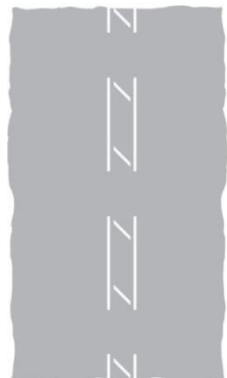
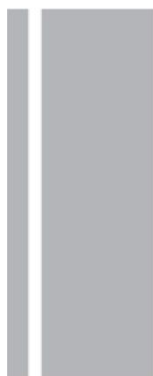


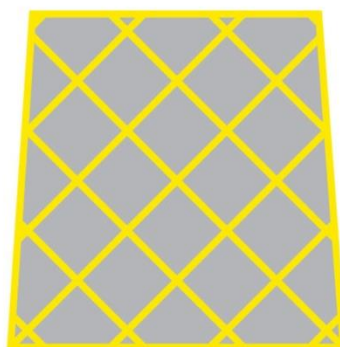
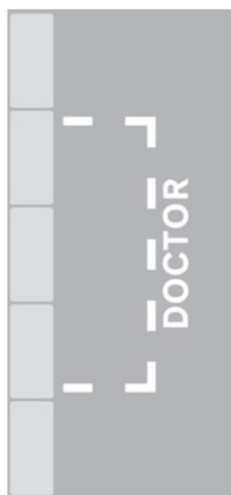
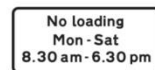
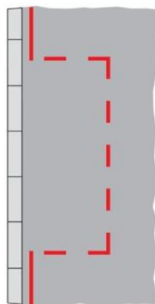
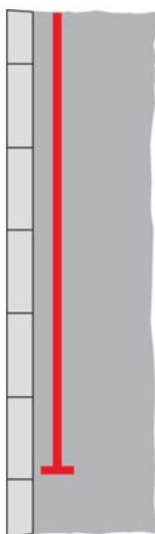
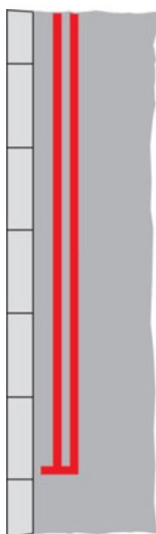
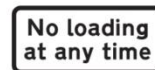


Priority over
oncoming
vehicles



Road Markings





Tell Me Questions

1. Tell me how you'd check that the brakes are working before starting a journey.

Brakes should not feel spongy or slack. Brakes should be tested as you set off. Vehicle should not pull to one side.

2. Tell me where you'd find the information for the recommended tyre pressures for this car and how tyre pressures should be checked.

Manufacturer's guide, use a reliable pressure gauge, check and adjust pressures when tyres are cold, don't forget spare tyre, remember to refit valve caps.

3. Tell me how you make sure your head restraint is correctly adjusted so it provides the best protection in the event of a crash.

The head restraint should be adjusted so the rigid part of the head restraint is at least as high as the eye or top of the ears, and as close to the back of the head as is comfortable. Note: Some restraints might not be adjustable.

4. Tell me how you'd check the tyres to ensure that they have sufficient tread depth and that their general condition is safe to use on the road.

No cuts and bulges, 1.6mm of tread depth across the central three-quarters of the breadth of the tyre, and around the entire outer circumference of the tyre.

5. Tell me how you'd check that the headlights and tail lights are working. You don't need to exit the vehicle.

Explain you'd operate the switch (turn on ignition if necessary), then walk round vehicle (as this is a 'tell me' question, you don't need to physically check the lights).

6. Tell me how you'd know if there was a problem with your anti-lock braking system.

Warning light should illuminate if there is a fault with the anti-lock braking system.

7. Tell me how you'd check the direction indicators are working. You don't need to exit the vehicle.

Explain you'd operate the switch (turn on ignition if necessary), and then walk round vehicle (as this is a 'tell me' question, you don't need to physically check the lights).

8. Tell me how you'd check the brake lights are working on this car.

Explain you'd operate the brake pedal, make use of reflections in windows or doors, or ask someone to help.

9. Tell me how you'd check the power-assisted steering is working before starting a journey.

If the steering becomes heavy, the system may not be working properly. Before starting a journey, 2 simple checks can be made.

Gentle pressure on the steering wheel, maintained while the engine is started, should result in a slight but noticeable movement as the system begins to operate. Alternatively turning the steering wheel just after moving off will give an immediate indication that the power assistance is functioning.

10. Tell me how you'd switch on the rear fog light(s) and explain when you'd use it/them. You don't need to exit the vehicle.

Operate switch (turn on dipped headlights and ignition if necessary). Check warning light is on. Explain use.

11. Tell me how you switch your headlight from dipped to main beam and explain how you'd know the main beam is on.

Operate switch (with ignition or engine on if necessary), check with main beam warning light.

Tell Me Questions (under bonnet)

12. Open the bonnet and tell me how you'd check that the engine has sufficient oil.

Identify dipstick/oil level indicator, describe check of oil level against the minimum and maximum markers.

13. Open the bonnet and tell me how you'd check that the engine has sufficient engine coolant.

Identify high and low level markings on header tank where fitted or radiator filler cap, and describe how to top up to correct level.

14. Open the bonnet and tell me how you'd check that you have a safe level of hydraulic brake fluid.

Identify reservoir, check level against high and low markings.

Show Me Questions

When it's safe to do so, can you show me how you wash and clean the rear windscreen?

When it's safe to do so, can you show me how you wash and clean the front windscreen?

When it's safe to do so, can you show me how you'd switch on your dipped headlights?

When it's safe to do so, can you show me how you'd set the rear demister?

When it's safe to do so, can you show me how you'd operate the horn?